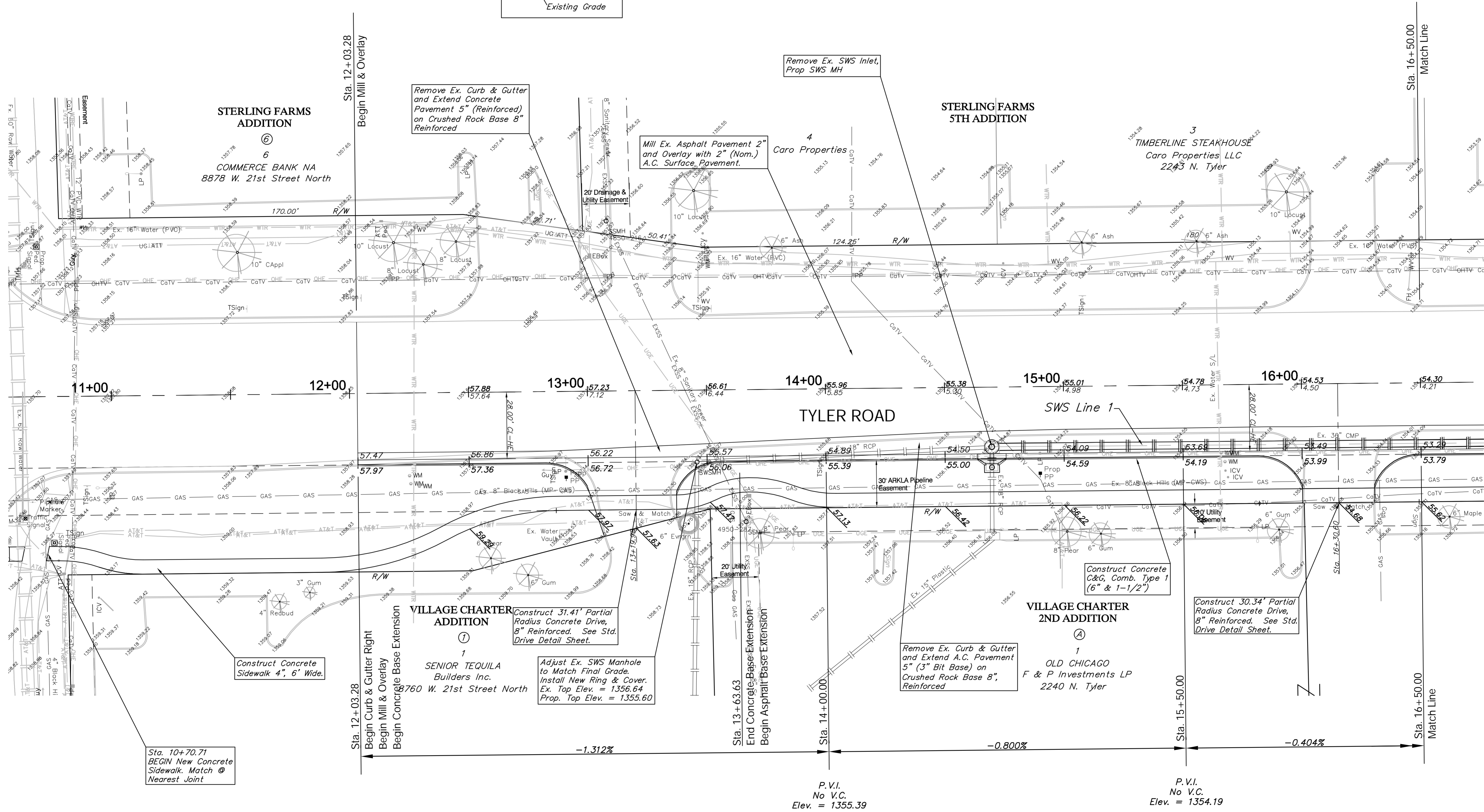
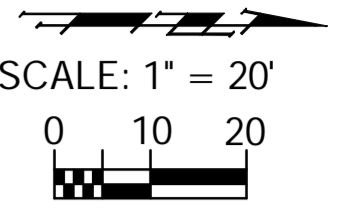
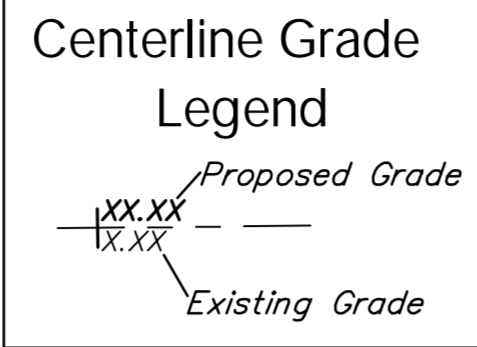


BENCHMARK:
 BM #1 - Chiseled "□" on the Northeast Corner of Base for the Traffic Signal Pole on the Northeast Corner of 21st Street North & Tyler Road.
 Sta. 10+63.51' Rt.
 Elev. = 1358.34



Sta. 10+70.71
 BEGIN New Concrete Sidewalk. Match @ Nearest Joint

Construct Concrete Sidewalk 4", 6" Wide.

Adjust Ex. SWS Manhole to Match Final Grade. Install New Ring & Cover. Ex. Top Elev. = 1356.64 Prop. Top Elev. = 1355.60

Remove Ex. Curb & Gutter and Extend A.C. Pavement 5" (3" Bit Base) on Crushed Rock Base 8", Reinforced

Construct Concrete C&G, Comb. Type 1 (6" & 1-1/2")

Construct 30.34' Partial Radius Concrete Drive, 8" Reinforced. See Std. Drive Detail Sheet.

P.V.I.
 No V.C.
 Elev. = 1355.39

P.V.I.
 No V.C.
 Elev. = 1354.19