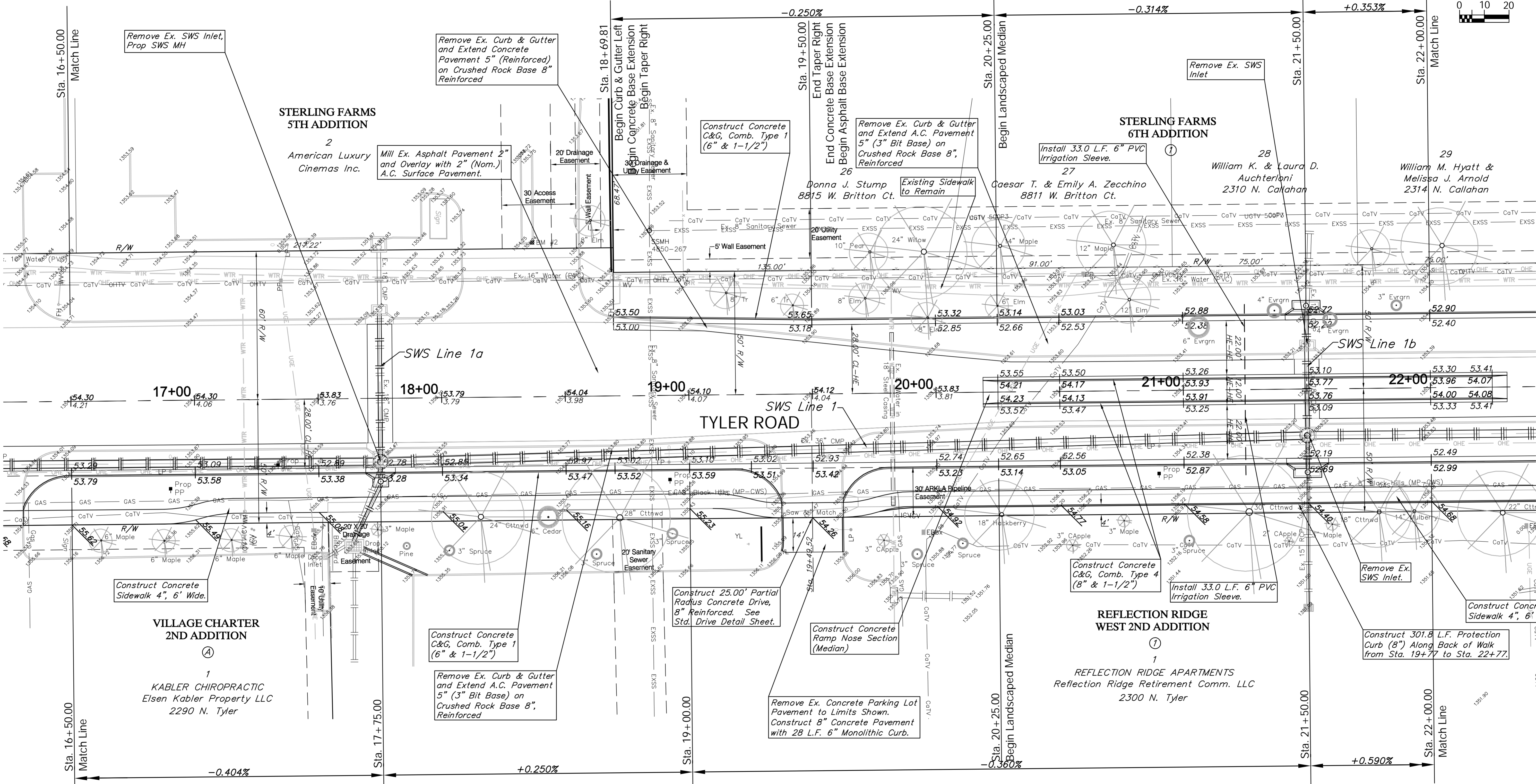
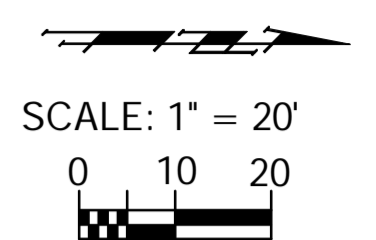


BENCHMARK:
 BM #2 - Chiseled "□" on the Top of the East End of the North Curb on the Median in the Drive into the Warren Theater. Sta. 18+37.62' Lt. Elev. = 1354.29

P.V.I. No V.C. Elev. = 1352.72



P.V.I. No V.C. Elev. = 1353.28

P.V.I. No V.C. Elev. = 1353.59

P.V.I. No V.C. Elev. = 1352.69

Drawing File: E:\Projects\Tyler - 21st to 29th\Civil 3d\Tyler Base.dwg (Pav02)

Design: TPV
 Drawn: STAFF
 Approved: TPV
 Scale: NOTED

Project No. 1012E575 CAPITAL IMPROVEMENT PROJECT
TYLER ROAD PAVING
 Sta. 17 + 50.00 to Sta. 22 + 00.00
 TYLER ROAD - 21ST STREET NORTH TO 29TH STREET NORTH

Baughman Company, P.A.
 315 Ellis St., Wichita, KS 67211 P 316.262.1271 F 316.262.0149
 ENGINEERING | SURVEYING | PLANNING | LANDSCAPE ARCHITECTURE

July 2011
 SHEET 12 OF 100