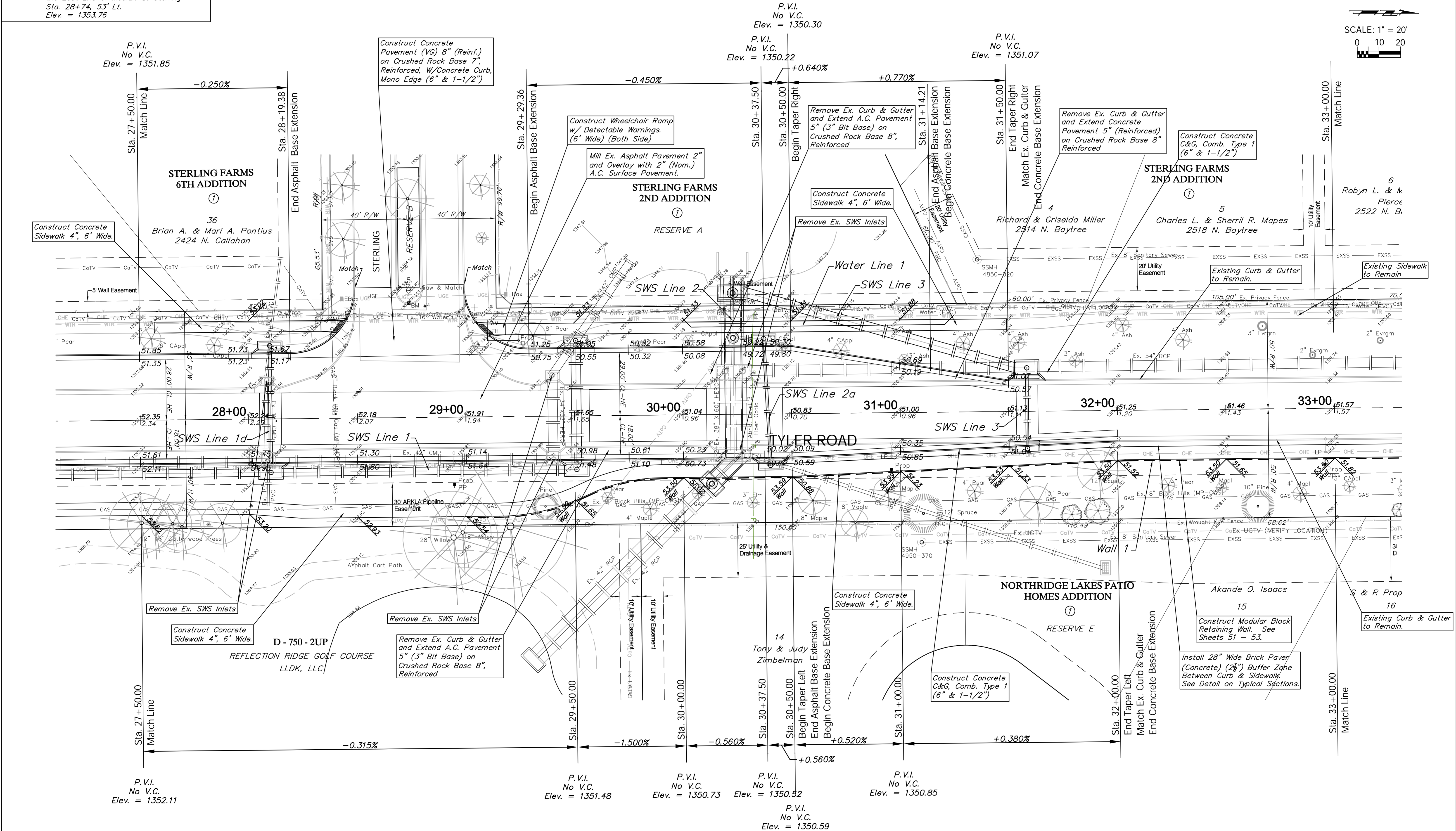
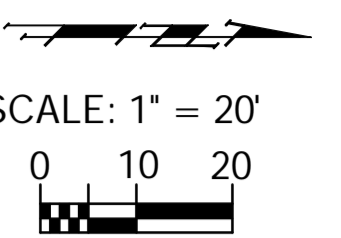


BENCHMARK:  
 BM #4 - Chiseled "□" on the Top of the Curb on the East End of Median at Sterling  
 Sta. 28+74.53' Lt.  
 Elev. = 1353.76



Design: TPV Drawn: STAFF Approved: TPV Scale: NOTED		Drawing File: E:\Projects\Tyler - 21st to 29th\Civil 3d\Tyler Base.dwg (Pav04) Project No. 1012E575 <b>CAPITAL IMPROVEMENT PROJECT</b> <b>TYLER ROAD PAVING</b> Sta. 27 + 50.00 to Sta. 33 + 00.00 TYLER ROAD - 21ST STREET NORTH to 29TH STREET NORTH	July 2011 SHEET <b>14</b> OF <b>100</b>
--	--	---	---

