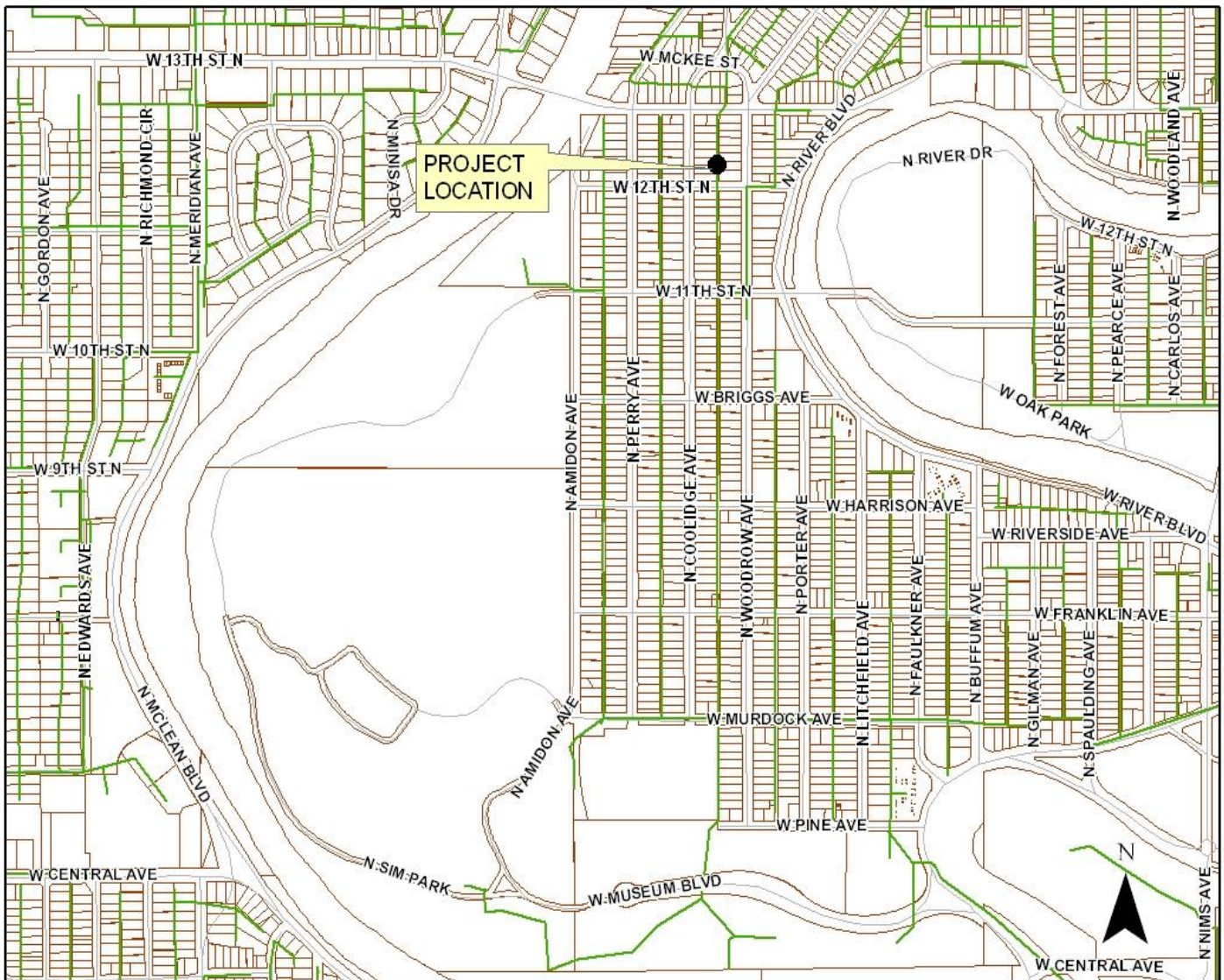


2011 SANITARY SEWER RECONSTRUCTION PHASE 4

OCA # 620580 / 468-84778
(East of Meridian, South of 13th Street North)

<u>GENERAL LOCATION</u>	<u>PIPE SIZE</u>	<u>UPSTREAM MANHOLE</u>	<u>DOWNSTREAM MANHOLE</u>	<u>UPSTREAM INVERT ELEVATION</u> (City Datum)	<u>DOWNSTREAM INVERT ELEVATION</u> (City Datum)	<u>LENGTH (FT.)</u>
Alley between Coolidge and Woodrow, south of 13th Street North						
Line segment	8"	5348-123	5348-120	116.51	115.42	363
Point repair	8"	5348-120	5348-117	115.42	114.33	N/A
Total liner feet =						363



13th St. N.

MH # 5348-123
Approx depth = 7.1 ft

Remove 363 lf of 8" Pipe
Install 363 lf of 8" Pipe

MH # 5348-120
Reconstruct Manhole
Approx depth = 7.9 ft

1302 N. Coolidge

1301 N. Woodrow

363'

(unpaved alley)

12th St. N.

Perry

Coolidge

Woodrow

North River Blvd

MH # 5348-117
Reconstruct Manhole
Approx depth = 8.6 ft

1232 N. Coolidge

1231 N. Woodrow

371'

(unpaved alley)

Point Repair: Remove and replace
40 lf of pipe, from MH 5348-117 to
40 lf north, including two Service
Connections (see tv log)

N





088

123

148

W 13TH ST N

137U138

139CO

135

N COOLIDGE AVE

N WOODROW AVE

133

N RIVER BLVD

085

120

130

W 12TH ST N

082

117

N

Television Inspection Master Report

8/13/2010

1:07 PM

US Structure: 5348-123 1719 W 13TH ST N Date Insp: 5/17/2010 Basin: C03E
 DS Structure: 5348-120 1301 N WOODROW ST Dir Televised:Upstream To Downstream

Pipe Information

Project No. : B-223 Dia/Ht: 8 Material: VCP Length: 363.9 Tape ID: DVD #0585

Obs. #	VTR Counter	Distance	Location	Description	Rating	Obsrvd (gpm)	Ratings			Remain (gpm)
							Est. (gpm)	Struct	Clean	
1		0.0		5348-123 US Manhole						
2		0.0	1338 N COOLIDGE	Wye Service	1	0.000	0	0	0.000	
3		8.2		Broken Pipe	2	0.008	44	0	0.008	
4		10.6		Crack-Horizontal	2	0.002	2	0	0.002	
5		13.1		Crack-Horizontal	2	0.002	2	0	0.002	
6		15.8		Crack-Radial	2	0.002	2	0	0.002	
7		18.2		Crack-Radial	2	0.002	2	0	0.002	
8		20.6		Crack-Horizontal	3	0.004	5	0	0.004	
9		23.3		Crack-Radial	2	0.002	2	0	0.002	
10		24.9		Wye Service	1	0.000	0	0	0.000	
11		26.9	1345 N WOODROW	Wye Service	2	0.000	0	0	0.000	
PVC service is badly offset at the VCP wye / needs repaired										
12		28.2		Crack-Radial	2	0.002	2	0	0.002	
13		38.6		Crack-Horizontal	2	0.002	2	0	0.002	
14		41.0		Crack-Radial	3	0.004	5	0	0.004	
15		42.6	1343 N WOODROW	Break-In Conn	3	0.004	2	0	0.004	
Clay tap is very rough & jagged / flow from the service line may be getting outside of the city main										
16		46.2		Crack-Horizontal	3	0.004	5	0	0.004	
17		49.3	1719 W 13TH ST N	Break-In Conn	3	0.004	2	0	0.004	
Tap is in poor condition / flow from the service line may be getting outside of the city main										
18		51.3		Broken Pipe	2	0.008	44	0	0.008	
19		52.8		Wye Service	1	0.000	0	0	0.000	
20		56.2		Crack-Radial	2	0.002	2	0	0.002	
21		58.7		Crack-Radial	2	0.002	2	0	0.002	
22		63.8		Broken Pipe	3	0.010	60	0	0.010	
23		66.3		Broken Pipe	2	0.008	44	0	0.008	
24		68.8		Crack-Horizontal	2	0.002	2	0	0.002	
25		73.9		Crack-Radial	2	0.002	2	0	0.002	
26		73.9		Crack-Horizontal	2	0.002	2	0	0.002	
27		74.8	1332 N COOLIDGE	Wye Service	5	0.000	400	0	0.000	
Service is broken off the city main / some flow from service line enters main through a nearby joint										
28		76.4		Crack-Radial	3	0.004	5	0	0.004	
29		77.3	1341 N WOODROW / roots	Wye Service	2	0.000	0	0	0.000	
30		79.1		Crack-Radial	2	0.002	2	0	0.002	



Television Inspection Master Report

8/13/2010

1:07 PM

US Structure: 5348-123 1719 W 13TH ST N Date Insp: 5/17/2010 Basin: C03E
 DS Structure: 5348-120 1301 N WOODROW ST Dir Televised:Upstream To Downstream

31	86.4		Broken Pipe	2	0.008	44	0	0.008
32	94.0		Crack-Radial	2	0.002	2	0	0.002
33	96.6		Crack-Horizontal	2	0.002	2	0	0.002
34	99.9		Broken Pipe	2	0.008	44	0	0.008
35	100.9		Wye Service	1	0.000	0	0	0.000
36	101.7		Crack-Radial	3	0.004	5	0	0.004
37	103.3		Wye Service	1	0.000	0	0	0.000
38	109.3		Crack-Radial	2	0.002	2	0	0.002
39	116.9		Crack-Radial	3	0.004	5	0	0.004
40	119.4		Crack-Horizontal	2	0.002	2	0	0.002
41	120.0		Observation Hole	1	0.000	0	0	0.000
42	125.4	1330 N COOLIDGE	Wye Service	1	0.000	0	0	0.000
43	126.9	Joint	Offset	3	0.010	20	0	0.010
44	127.1		Broken Pipe	3	0.010	60	0	0.010
45	128.0	1319 N WOODROW	Wye Service	3	0.000	2	0	0.000
Service line is breaking off the city main								
46	129.5		Broken Pipe	4	0.030	78	0	0.030
47	134.5		Crack-Radial	2	0.002	2	0	0.002
48	149.4		Crack-Radial	3	0.004	5	0	0.004
49	151.2		Wye Service	1	0.000	0	0	0.000
50	152.2		Broken Pipe	3	0.010	60	0	0.010
51	152.9	1317 N WOODROW	Wye Service	2	0.000	0	0	0.000
Poor condition / roots								
52	175.7	1320 N COOLIDGE / PVC	Break-In Conn	1	0.001	0	0	0.001
53	177.3		Crack-Horizontal	2	0.002	2	0	0.002
54	178.8		Wye Service	1	0.000	0	0	0.000
55	182.3		Crack-Radial	2	0.002	2	0	0.002
56	184.8		Crack-Radial	2	0.002	2	0	0.002
57	200.5		Wye Service	1	0.000	0	0	0.000
58	202.1		Crack-Radial	2	0.002	2	0	0.002
59	202.9	1315 N WOODROW	Wye Service	2	0.000	0	0	0.000
Poor condition / roots								
60	204.5		Crack-Radial	2	0.002	2	0	0.002
61	207.8	1318 N COOLIDGE	Break-In Conn	3	0.004	2	0	0.004
Poor condition								
62	212.2		Crack-Horizontal	2	0.002	2	0	0.002
63	225.8		Wye Service	1	0.000	0	0	0.000
64	227.3		Crack-Radial	2	0.002	2	0	0.002
65	228.9		Wye Service	1	0.000	0	0	0.000
66	239.9		Crack-Radial	2	0.002	2	0	0.002
67	240.4		Observation Hole	1	0.000	0	0	0.000

Television Inspection Master Report

8/13/2010

1:07 PM

US Structure: 5348-123 1719 W 13TH ST N Date Insp: 5/17/2010 Basin: C03E
 DS Structure: 5348-120 1301 N WOODROW ST Dir Televised:Upstream To Downstream

68	242.3		Broken Pipe	2	0.008	44	0	0.008
69	251.5		Wye Service	1	0.000	0	0	0.000
70	252.3		Broken Pipe	3	0.010	60	0	0.010
71	253.9		Wye Service	1	0.000	0	0	0.000
72	259.8		Broken Pipe	2	0.008	44	0	0.008
73	262.5		Crack-Radial	3	0.004	5	0	0.004
74	276.5		Wye Service	1	0.000	0	0	0.000
75	277.2	Joint	Offset	4	0.030	60	0	0.030
76	277.4		Crack-Radial	2	0.002	2	0	0.002
77	278.5	1305 N WOODROW	Wye Service	1	0.000	0	0	0.000
78	280.4		Crack-Radial	2	0.002	2	0	0.002
79	302.7		Crack-Radial	2	0.002	2	0	0.002
80	303.5	1312 N COOLIDGE	Wye Service	1	0.000	0	0	0.000
81	305.2		Broken Pipe	3	0.010	60	0	0.010
82	306.1	1301 N WOODROW	Wye Service	4	0.000	60	0	0.000
Tap severely offset outside of the main (this may have been repaired since this televising was done)								
83	307.5		Crack-Radial	2	0.002	2	0	0.002
84	310.1		Crack-Radial	2	0.002	2	0	0.002
85	312.7		Crack-Radial	2	0.002	2	0	0.002
86	315.2		Broken Pipe	2	0.008	44	0	0.008
87	320.2		Crack-Radial	2	0.002	2	0	0.002
88	322.6		Crack-Radial	2	0.002	2	0	0.002
89	325.2		Crack-Radial	3	0.004	5	0	0.004
90	328.2		Broken Pipe	3	0.010	60	0	0.010
91	328.8	1306 N COOLIDGE	Wye Service	5	0.000	60	0	0.000
Service is completely broken off the city main / CAVITY								
92	330.2		Crack-Radial	2	0.002	2	0	0.002
93	331.8		Wye Service	1	0.000	0	0	0.000
94	332.8		Crack-Radial	2	0.002	2	0	0.002
95	335.3		Crack-Radial	2	0.002	2	0	0.002
96	337.1		Broken Pipe	4	0.030	78	0	0.030
Invert of the pipe is broken								
97	347.9		Crack-Radial	2	0.002	2	0	0.002
98	350.1		Crack-Horizontal	2	0.002	2	0	0.002
99	353.0		Crack-Radial	2	0.002	2	0	0.002
100	354.8		Wye Service	1	0.000	0	0	0.000
101	356.0		Crack-Radial	2	0.002	2	0	0.002
102	357.4		Wye Service	1	0.000	0	0	0.000
103	358.2		Broken Pipe	3	0.010	60	0	0.010
104	362.9	5348-120	DS Manhole	3				

Television Inspection Master Report

8/13/2010

1:07 PM

US Structure: 5348-120 1301 N WOODROW ST Date Insp: 5/18/2010 Basin: C03E
 DS Structure: 5348-117 1232 N COOLIDGE AVE Dir Televised: Upstream To Downstream

Pipe Information

Project No. : B-223 Dia/Ht: 8 Material: VCP Length: 362.6 Tape ID: DVD #0585

Obs. #	VTR Counter	Distance	Location	Description	Rating	Obsrvd (gpm)	Ratings			Remain (gpm)
							Est. (gpm)	Struct	Clean	
1		0.0		5348-120 US Manhole						
2		5.1		Crack-Radial	2	0.002	2	0	0.002	
3		10.2		Crack-Radial	2	0.002	2	0	0.002	
4		12.6		Broken Pipe	3	0.010	60	0	0.010	
5		15.1		Break-In Conn	3	0.004	2	0	0.004	
1302 N COOLIDGE										
6		15.7		Crack-Horizontal	2	0.002	2	0	0.002	
7		20.2		Crack-Radial	2	0.002	2	0	0.002	
8		22.7		Crack-Horizontal	3	0.004	5	0	0.004	
9		27.3		Wye Service	1	0.000	0	0	0.000	
10		28.0	Joint	Offset	4	0.030	60	0	0.030	
11		29.1		Wye Service	2	0.000	0	0	0.000	
1301 N WOODROW										
12		30.5		Broken Pipe	3	0.010	60	0	0.010	
13		46.6		Crack-Radial	2	0.002	2	0	0.002	
14		49.1		Crack-Radial	2	0.002	2	0	0.002	
15		54.3		Crack-Radial	3	0.004	5	0	0.004	
16		56.9		Crack-Radial	2	0.002	2	0	0.002	
17		62.2		Crack-Radial	2	0.002	2	0	0.002	
18		64.8		Crack-Radial	2	0.002	2	0	0.002	
19		69.9		Crack-Radial	2	0.002	2	0	0.002	
20		72.2		Crack-Radial	2	0.002	2	0	0.002	
21		75.0		Crack-Radial	3	0.004	5	0	0.004	
22		77.5		Crack-Radial	2	0.002	2	0	0.002	
23		80.1		Crack-Radial	2	0.002	2	0	0.002	
24		82.6		Crack-Radial	2	0.002	2	0	0.002	
25		87.7		Crack-Radial	2	0.002	2	0	0.002	
26		90.3		Crack-Radial	2	0.002	2	0	0.002	
27		92.9		Crack-Radial	2	0.002	2	0	0.002	
28		97.9		Crack-Radial	2	0.002	2	0	0.002	
29		102.8		Crack-Radial	2	0.002	2	0	0.002	
30		105.3		Crack-Radial	2	0.002	2	0	0.002	
31		107.9		Crack-Radial	2	0.002	2	0	0.002	
32		110.3		Crack-Radial	2	0.002	2	0	0.002	
33		112.9		Roots	2	0.004	2	4	0.004	
34		120.5		Crack-Radial	2	0.002	2	0	0.002	
35		121.2		Observation Hole	2	0.000	0	0	0.000	



Television Inspection Master Report

8/13/2010

1:07 PM

US Structure:	5348-120	1301 N WOODROW ST	Date Insp:	5/18/2010	Basin:	C03E
DS Structure:	5348-117	1232 N COOLIDGE AVE	Dir Televised:	Upstream To Downstream		
36	123.0	Crack-Radial	2	0.002	2	0 0.002
37	123.9	Break-In Conn	3	0.004	2	0 0.004
1257 N WOODROW						
38	125.7	Crack-Radial	2	0.002	2	0 0.002
39	136.8	Break-In Conn	1	0.001	0	0 0.001
1258 N COOLIDGE						
40	144.6	Wye Service	1	0.000	0	0 0.000
41	147.1	Wye Service	1	0.000	0	0 0.000
42	169.5	Wye Service	1	0.000	0	0 0.000
43	171.4	Break-In Conn	1	0.001	0	0 0.001
1253 N WOODROW						
44	175.9	Broken Pipe	5	0.060	100	0 0.060
45	183.9	Break-In Conn	3	0.004	2	0 0.004
1252 N COOLIDGE						
46	192.7	Crack-Radial	2	0.002	2	0 0.002
47	194.5	Wye Service	1	0.000	0	0 0.000
48	197.0	Wye Service	1	0.000	0	0 0.000
49	197.9	Crack-Radial	2	0.002	2	0 0.002
50	201.5	Break-In Conn	3	0.004	2	0 0.004
1247 N WOODROW						
51	202.7	Crack-Radial	2	0.002	2	0 0.002
52	211.5	Break-In Conn	4	0.008	60	0 0.008
1248 N COOLIDGE						
53	217.9	Crack-Radial	2	0.002	2	0 0.002
54	219.3	Wye Service	1	0.000	0	0 0.000
55	221.9	Wye Service	1	0.000	0	0 0.000
56	240.4	Crack-Horizontal	2	0.002	2	0 0.002
57	240.7	Observation Hole	2	0.000	0	0 0.000
58	242.7	Crack-Radial	2	0.002	2	0 0.002
59	244.3	Wye Service	1	0.000	0	0 0.000
60	245.3	Crack-Radial	2	0.002	2	0 0.002
61	246.1	Wye Service	3	0.000	2	0 0.000
1241 N WOODROW						
62	247.7	Crack-Radial	2	0.002	2	0 0.002
63	255.0	Break-In Conn	3	0.004	2	0 0.004
1242 N COOLIDGE						
64	267.8	Crack-Radial	2	0.002	2	0 0.002
65	269.4	Wye Service	1	0.000	0	0 0.000

US Structure: 5348-120 1301 N WOODROW ST Date Insp: 5/18/2010 Basin: C03E
 DS Structure: 5348-117 1232 N COOLIDGE AVE Dir Televised:Upstream To Downstream

66	270.3		Crack-Radial	2	0.002	2	0	0.002
67	271.9		Wye Service	1	0.000	0	0	0.000
68	290.4		Crack-Radial	2	0.002	2	0	0.002
69	292.4		Break-In Conn	4	0.008	60	0	0.008
1237 N WOODROW								
70	294.3		Wye Service	1	0.000	0	0	0.000
71	295.3		Crack-Radial	2	0.002	2	0	0.002
72	296.9		Wye Service	1	0.000	0	0	0.000
73	297.9		Crack-Radial	2	0.002	2	0	0.002
74	302.9		Crack-Radial	2	0.002	2	0	0.002
75	305.4		Crack-Radial	2	0.002	2	0	0.002
76	315.4		Crack-Radial	2	0.002	2	0	0.002
77	318.0		Crack-Radial	2	0.002	2	0	0.002
78	319.6		Wye Service	1	0.000	0	0	0.000

79 321.5 1237 N WOODROW Wye Service 3 0.000 0 0 0.000
Service is beginning to break from the main / small hole in the bottom of service line, where it meets the VCP wye, may be allowing flow from the service line to leak outside of the city main

80 343.1 Crack-Radial 2 0.002 2 0 0.002

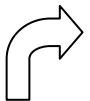
81 343.9 1238 N COOLIDGE Break-In Conn 5 0.010 400 0 0.010
Service is completely broken off the city main.

82 345.6 Crack-Radial 2 0.002 2 0 0.002

83 347.3 Wye Service 1 0.000 0 0 0.000

84 348.2 Crack-Radial 2 0.002 2 0 0.002

85 362.1 5348-117 DS Manhole 3 (bottom of manhole in poor condition)



REPLACE THE DOWNSTREAM 40 LF OF PIPE, INCLUDING THE TWO SERVICE CONNECTIONS.