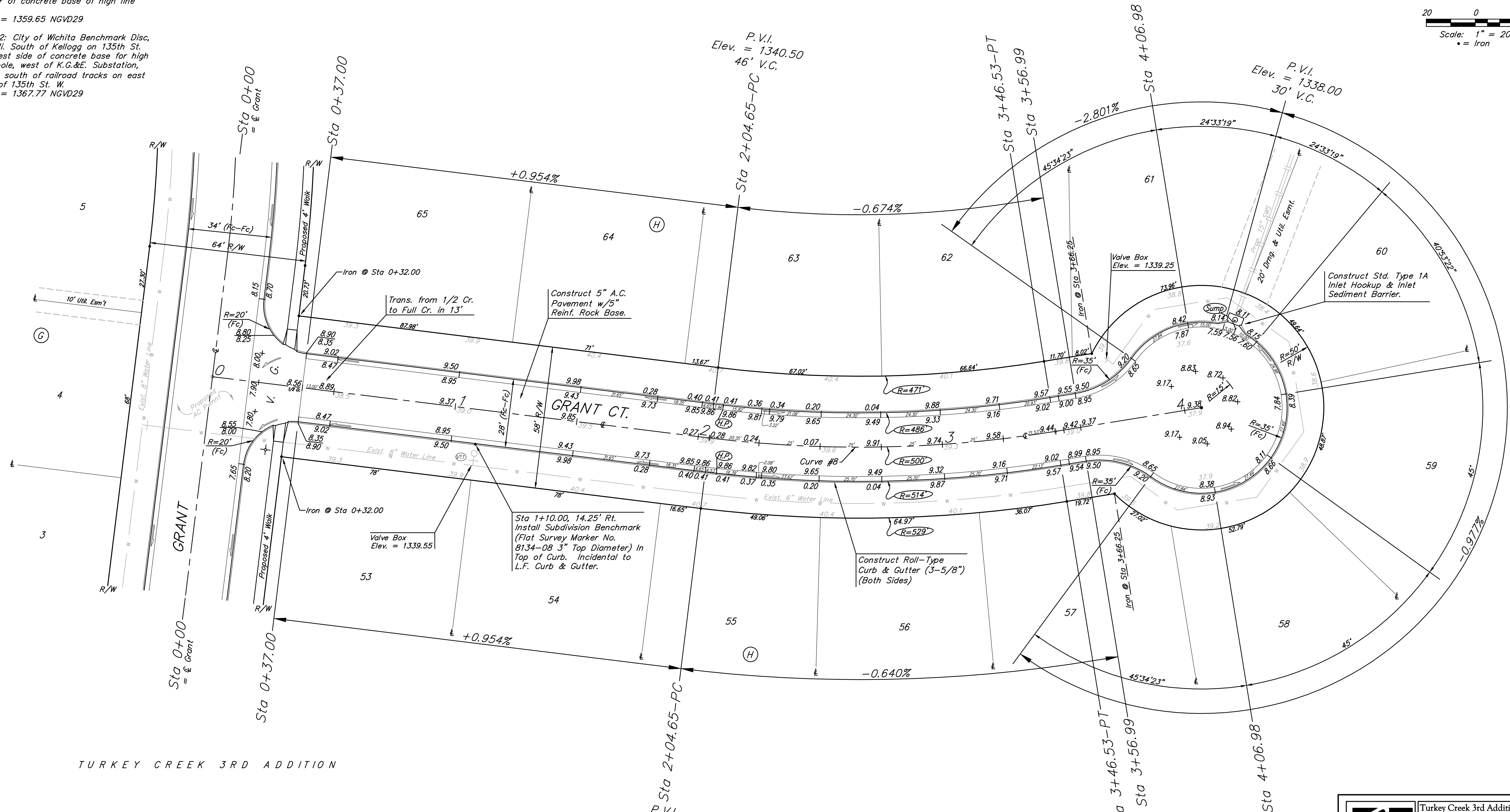
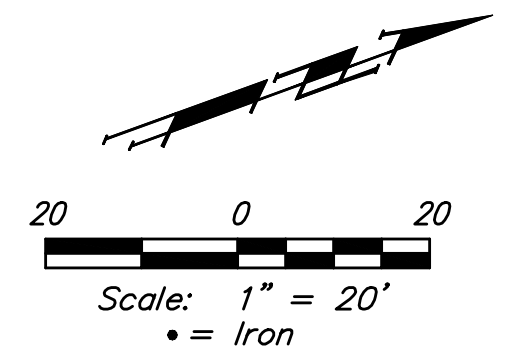


BENCHMARKS:
 BM #1: 135th St. W. & Pawnee
 City of Wichita Benchmark Disc,
 northeast corner of intersection on SW
 corner of concrete base of high line
 pole.
 Elev. = 1359.65 NGVD29

BM #2: City of Wichita Benchmark Disc,
 0.4 Mi. South of Kellogg on 135th St.
 W., west side of concrete base for high
 line pole, west of K.G.&E. Substation,
 135'± south of railroad tracks on east
 side of 135th St. W.
 Elev. = 1367.77 NGVD29

TURKEY CREEK 3RD ADDITION



TURKEY CREEK 3RD ADDITION

Curve #8
 Curve Data Based on Centerline
 Rad. = 500' Delta = 167°52' Tangent = 71.42'
 Arc = 141.88' L.C. = 141.40' Def./Ft. = 3.43771 Min.

Station	Arc	Face Chord Lengths		Defl.	Total Defl.
		8' Left	8' Right		
2+04.65	-	-	-	0°00'00"	0°00'00"
2+25.00	20.35'	19.45'	21.24'	1°09'57"	1°09'57"
2+50.00	25.00'	23.90'	26.10'	1°25'57"	2°35'54"
2+75.00	25.00'	23.90'	26.10'	1°25'57"	4°01'51"
3+00.00	25.00'	23.90'	26.10'	1°25'56"	5°27'47"
3+25.00	25.00'	23.90'	26.10'	1°25'57"	6°53'44"
3+46.53	21.53'	20.58'	22.48'	1°14'00"	8°07'44"

P.V.I.
 Elev. = 1340.50
 46' V.C.

Roll type curb & gutter to be constructed on the pavement on this sheet.
 Top of curb elevation are given for full height curb.

	Turkey Creek 3rd Addition - Phase II	
	GRANT CT STA 0+00 TO STA 4+06.98	
<small>Baughman Company, P.A. 315 Ellis St. Wichita, KS 67211 P 316-262-7771 F 316-262-0149 ENGINEERING SURVEYING PLANNING LANDSCAPE ARCHITECTURE</small>		
PROJECT NUMBER 472-84487	DESIGN JAK	DRAWN TMS/JAK
REVISIONS:	APPROVED DATE 7/26/11	SCALE Noted SHEET 14 OF 42