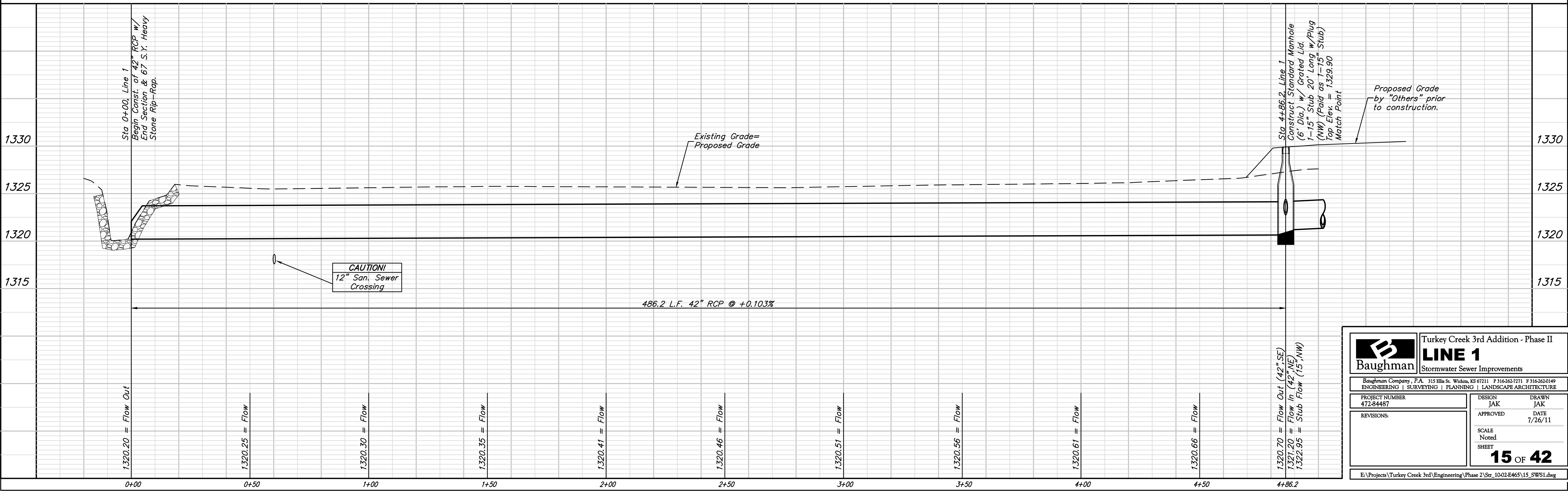
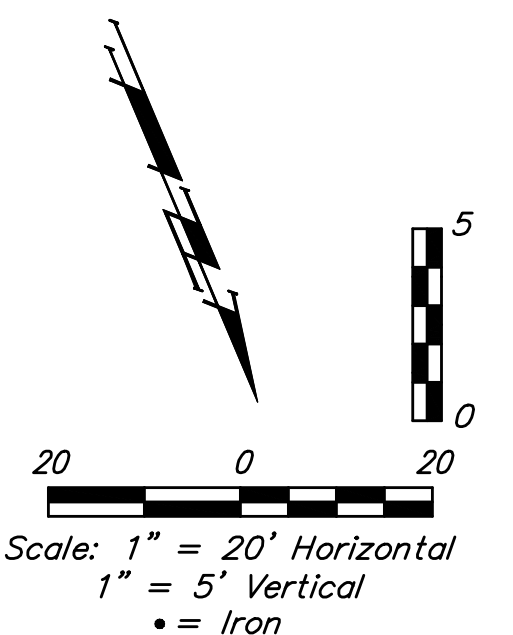
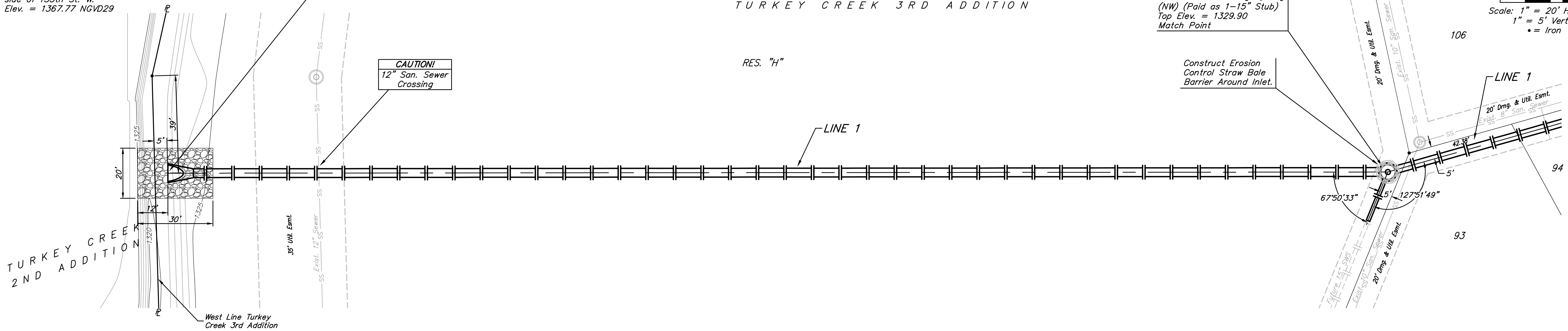


BENCHMARKS:
 BM #1: 135th St. W. & Pawnee
 City of Wichita Benchmark Disc,
 northeast corner of intersection on SW
 corner of concrete base of high line
 pole.
 Elev. = 1359.65 NGVD29

BM #2: City of Wichita Benchmark Disc,
 0.4 Mi. South of Kellogg on 135th St.
 W., west side of concrete base for high
 line pole, west of K.G.&E. Substation,
 135'± south of railroad tracks on east
 side of 135th St. W.
 Elev. = 1367.77 NGVD29

Sta 0+00, Line 1
 Begin Const. of 42" RCP w/
 End Section & 67 S.Y. Heavy
 Stone Rip-Rap.

Sta 4+86.2, Line 1
 Construct Standard Manhole
 (6' Dia.) w/ Grated Lid.
 1-15" Stub 20' Long w/Plug
 (NW) (Paid as 1-15" Stub)
 Top Elev. = 1329.90
 Match Point



		Turkey Creek 3rd Addition - Phase II	
		LINE 1	
ENGINEERING SURVEYING PLANNING LANDSCAPE ARCHITECTURE		Baughman Company, P.A. 315 Ellis St. Wichita, KS 67211 P 316-262-7271 F 316-262-0149 PROJECT NUMBER 472-84487	
DESIGN JAK APPROVED JAK DATE 7/26/11		DRAWN JAK SCALE Noted SHEET 15 OF 42	
E:\Projects\Turkey Creek 3rd\Engineering\Phase 2\Str_1002.E465\15_SW51.dwg			