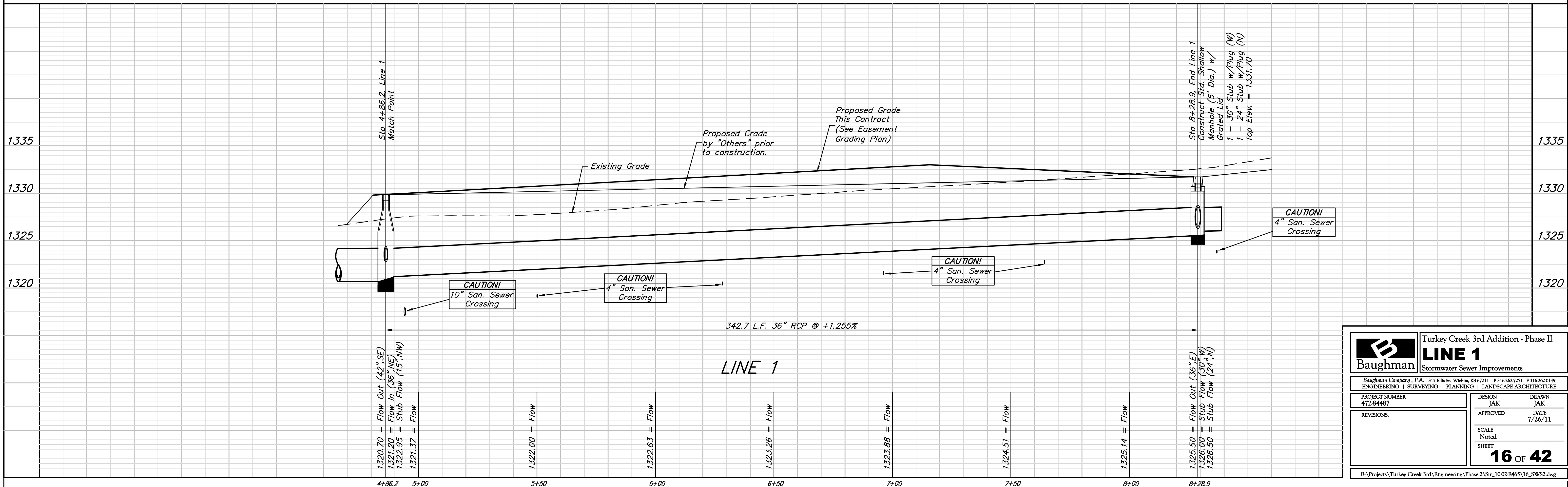
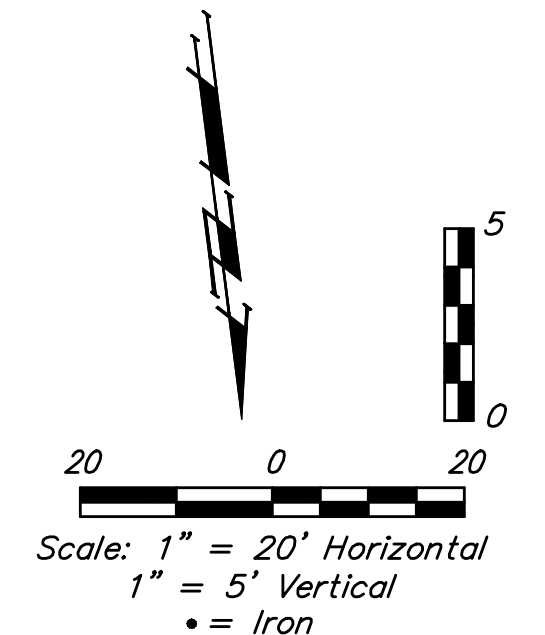
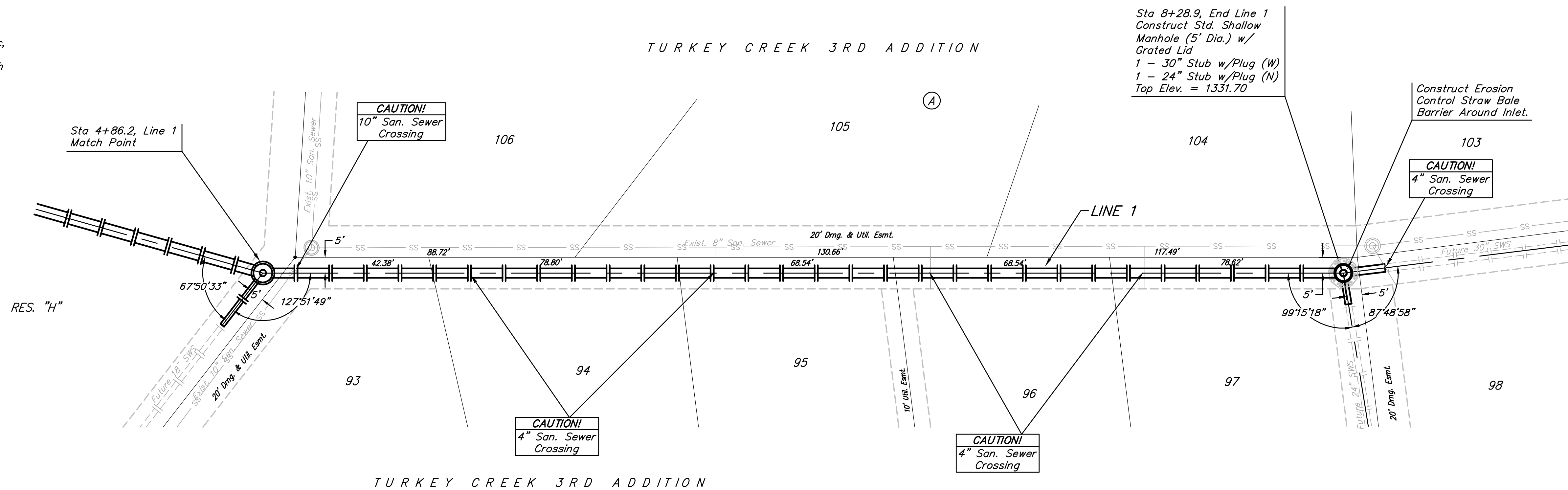


BENCHMARKS:
 BM #1: 135th St. W. & Pawnee
 City of Wichita Benchmark Disc,
 northeast corner of intersection on SW
 corner of concrete base of high line
 pole.
 Elev. = 1359.65 NGVD29

BM #2: City of Wichita Benchmark Disc,
 0.4 Mi. South of Kellogg on 135th St.
 W., west side of concrete base for high
 line pole, west of K.G.&E. Substation,
 135'± south of railroad tracks on east
 side of 135th St. W.
 Elev. = 1367.77 NGVD29

TURKEY CREEK 3RD ADDITION



		Turkey Creek 3rd Addition - Phase II	
		LINE 1	
Stormwater Sewer Improvements		Baughman Company, P.A. 315 Ellis St. Wichita, KS 67211 P 316-262-7271 F 316-262-0149 ENGINEERING SURVEYING PLANNING LANDSCAPE ARCHITECTURE	
PROJECT NUMBER 472-84487	DESIGN JAK	DRAWN JAK	DATE 7/26/11
REVISIONS:	APPROVED 	SCALE Noted	SHEET 16 OF 42
E:\Projects\Turkey Creek 3rd\Engineering\Phase 2\Str_1002E465\16_SWS2.dwg			