

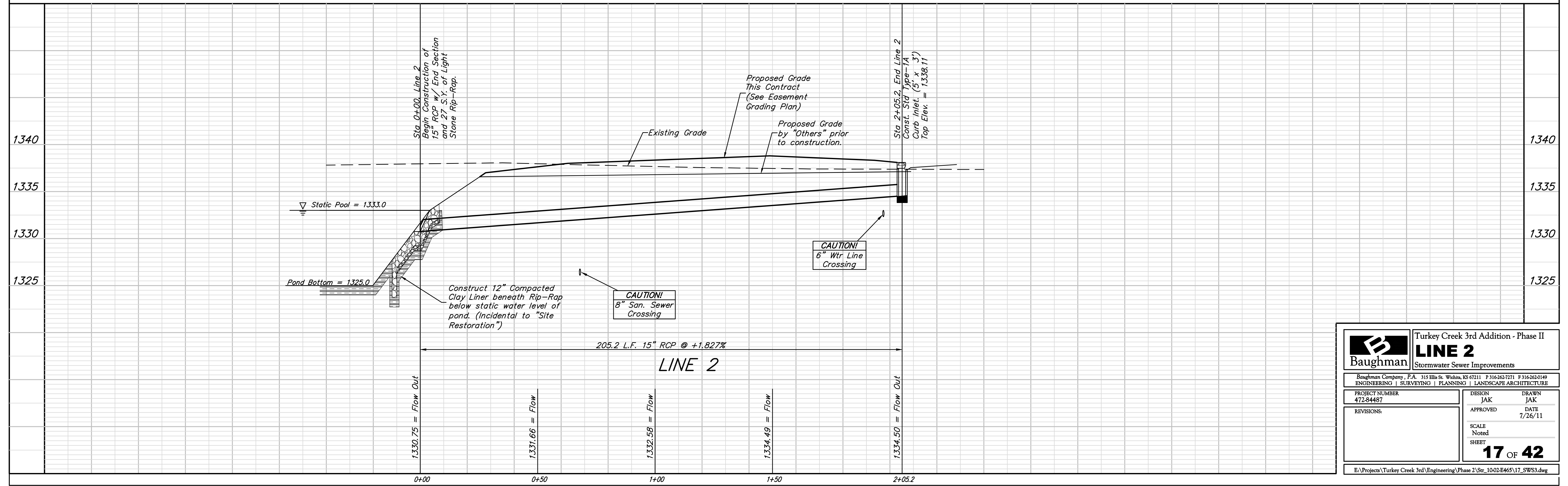
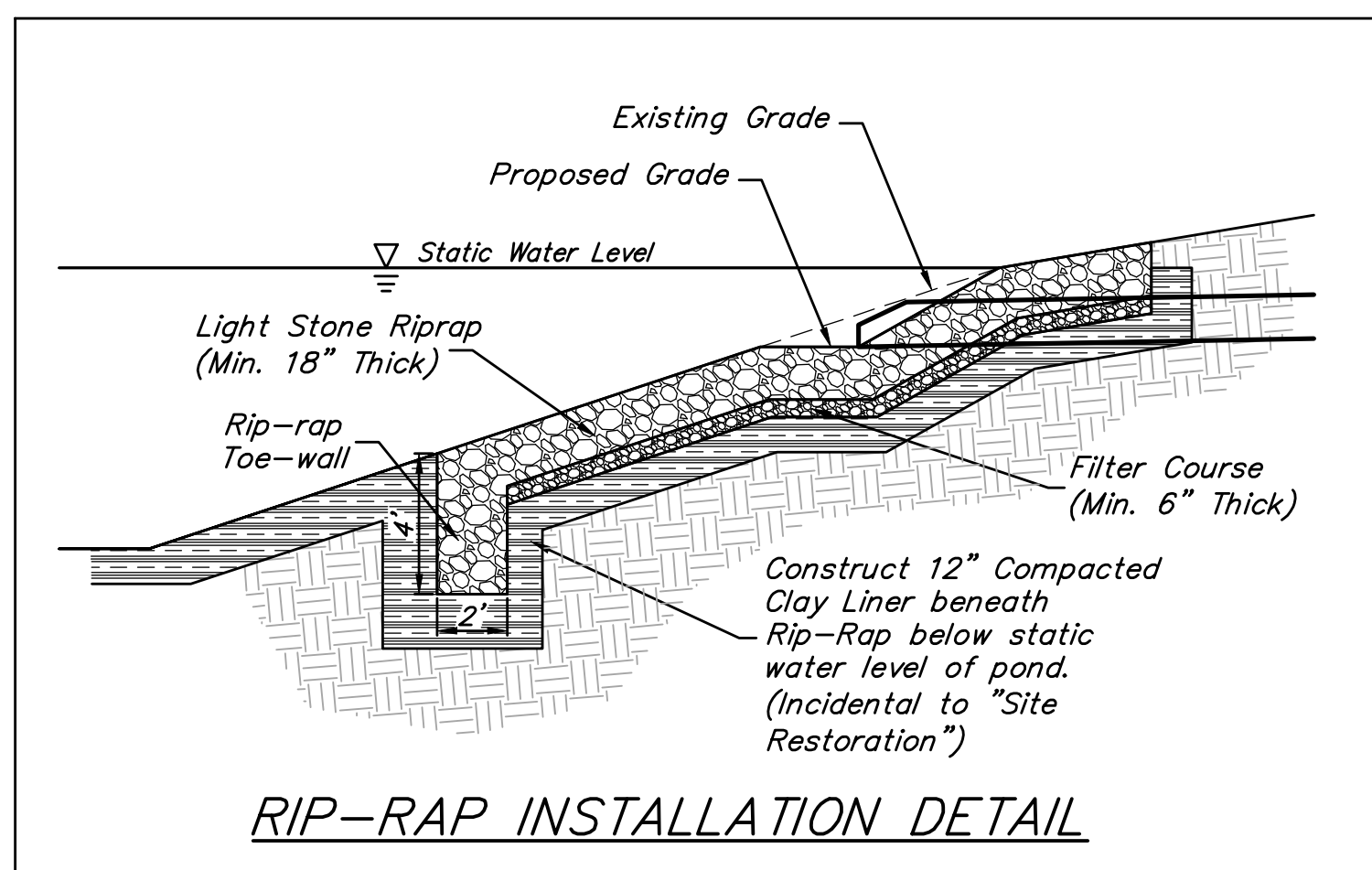
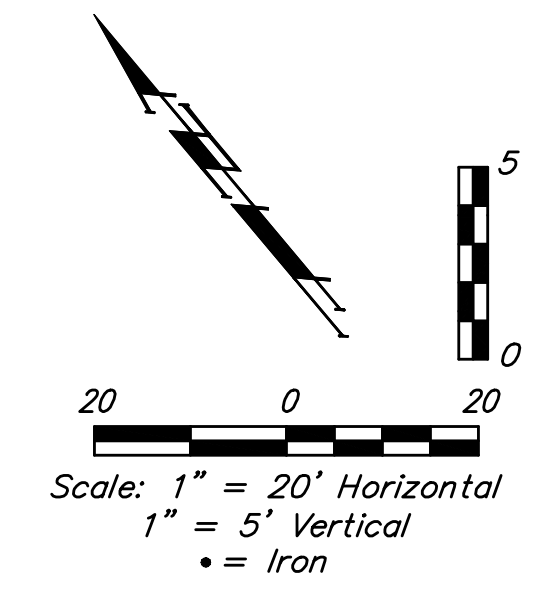
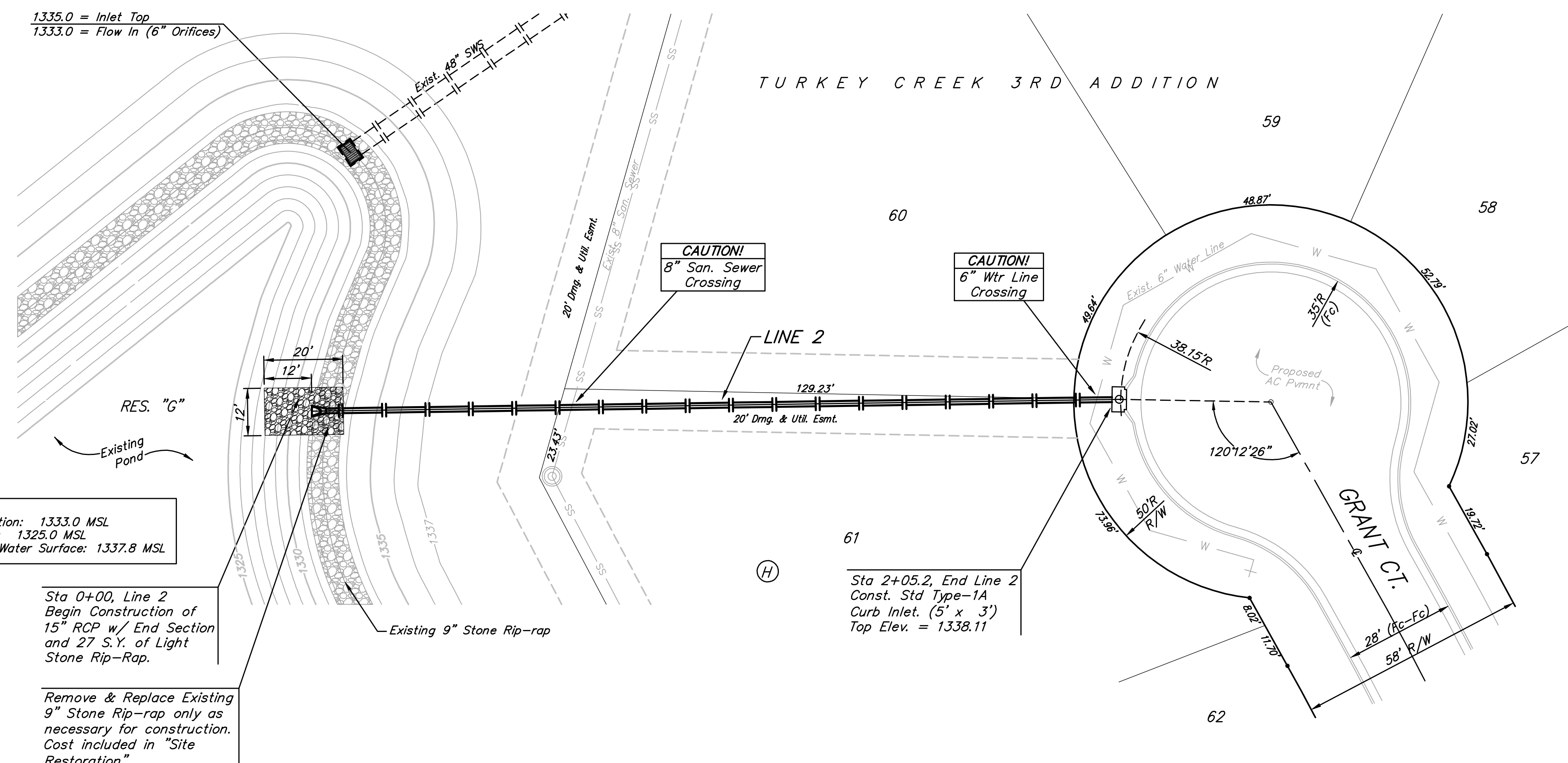
BENCHMARKS:
 BM #1: 135th St. W. & Pawnee
 City of Wichita Benchmark Disc,
 northeast corner of intersection on SW
 corner of concrete base of high line
 pole.
 Elev. = 1359.65 NGVD29

BM #2: City of Wichita Benchmark Disc,
 0.4 Mi. South of Kellogg on 135th St.
 W., west side of concrete base of high
 line pole, west of K.G.&E. Substation,
 135'± south of railroad tracks on east
 side of 135th St. W.
 Elev. = 1367.77 NGVD29

Pond Data:
 Static Pool Elevation: 1333.0 MSL
 Bottom Elevation: 1325.0 MSL
 100 Year Design Water Surface: 1337.8 MSL

Sta 0+00, Line 2
 Begin Construction of
 15" RCP w/ End Section
 and 27 S.Y. of Light
 Stone Rip-Rap.

Remove & Replace Existing
 9" Stone Rip-rap only as
 necessary for construction.
 Cost included in "Site
 Restoration"



		Turkey Creek 3rd Addition - Phase II	
		LINE 2	
ENGINEERING SURVEYING PLANNING LANDSCAPE ARCHITECTURE		Stormwater Sewer Improvements	
PROJECT NUMBER 472-84487		DESIGN JAK	
APPROVED		DRAWN JAK	
REVISIONS:		DATE 7/26/11	
SCALE Noted		SHEET 17 OF 42	
E:\Projects\Turkey Creek 3rd\Engineering\Phase 2\Str_1002.E465\17_SW53.dwg			