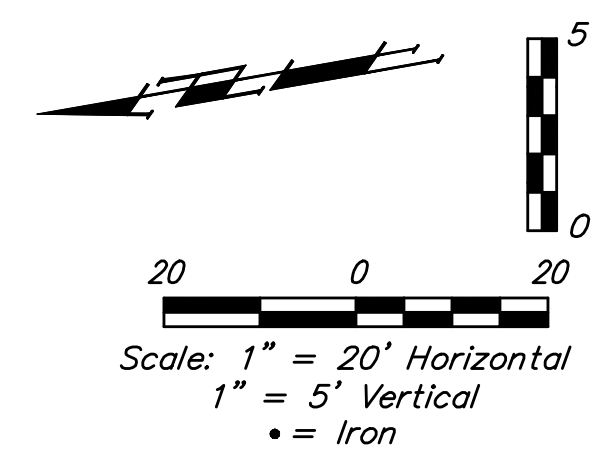
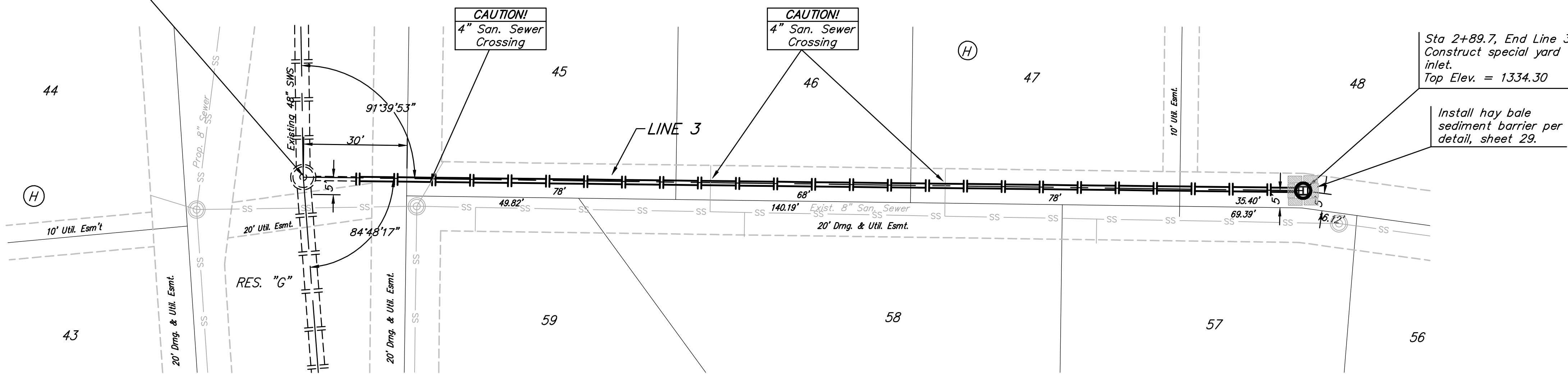


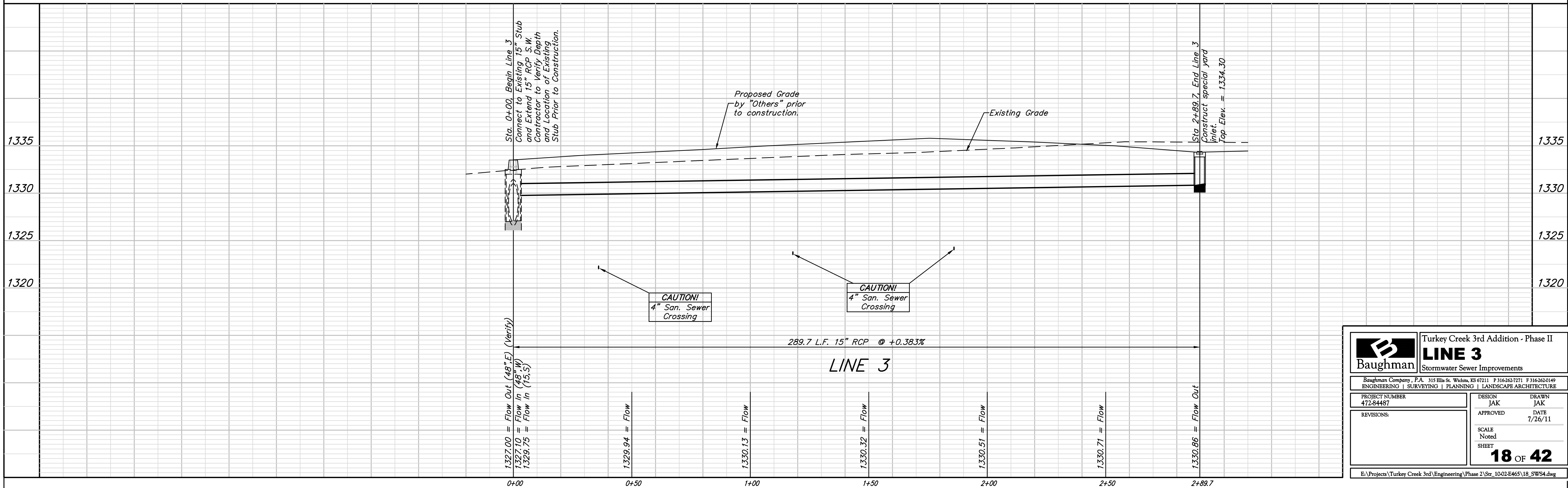
**BENCHMARKS:**  
 BM #1: 135th St. W. & Pawnee  
 City of Wichita Benchmark Disc,  
 northeast corner of intersection on SW  
 corner of concrete base of high line  
 pole.  
 Elev. = 1359.65 NGVD29

BM #2: City of Wichita Benchmark Disc,  
 0.4 Mi. South of Kellogg on 135th St.  
 W., west side of concrete base for high  
 line pole, west of K.G.&E. Substation,  
 135'± south of railroad tracks on east  
 side of 135th St. W.  
 Elev. = 1367.77 NGVD29

Sta. 0+00, Begin Line 3  
 Connect to Existing 15" Stub  
 and Extend 15" RCP S.W.  
 Contractor to Verify Depth  
 and Location of Existing  
 Stub Prior to Construction.



TURKEY CREEK 3RD ADDITION



<b>B</b> Baughman		Turkey Creek 3rd Addition - Phase II	
		<b>LINE 3</b> Stormwater Sewer Improvements	
Baughman Company, P.A. 315 Ellis St. Wichita, KS 67211 P 316-262-7271 F 316-262-0149 ENGINEERING   SURVEYING   PLANNING   LANDSCAPE ARCHITECTURE			
PROJECT NUMBER 472-84487	DESIGN JAK	DRAWN JAK	
REVISIONS:	APPROVED	DATE 7/26/11	
	SCALE Noted		
	SHEET		<b>18 OF 42</b>
E:\Projects\Turkey Creek 3rd\Engineering\Phase 2\Sec. 1002.E465\18_SW54.dwg			