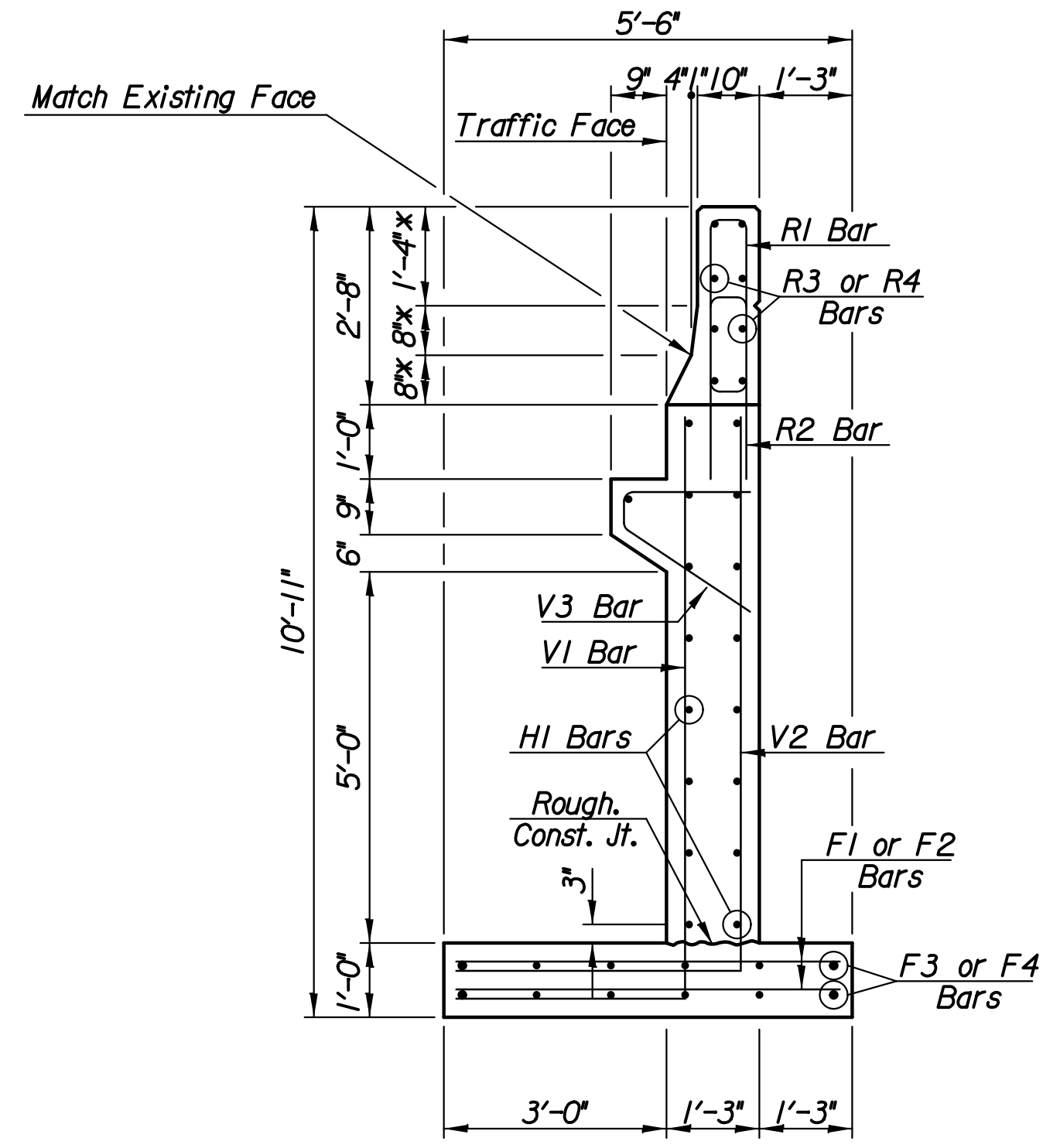
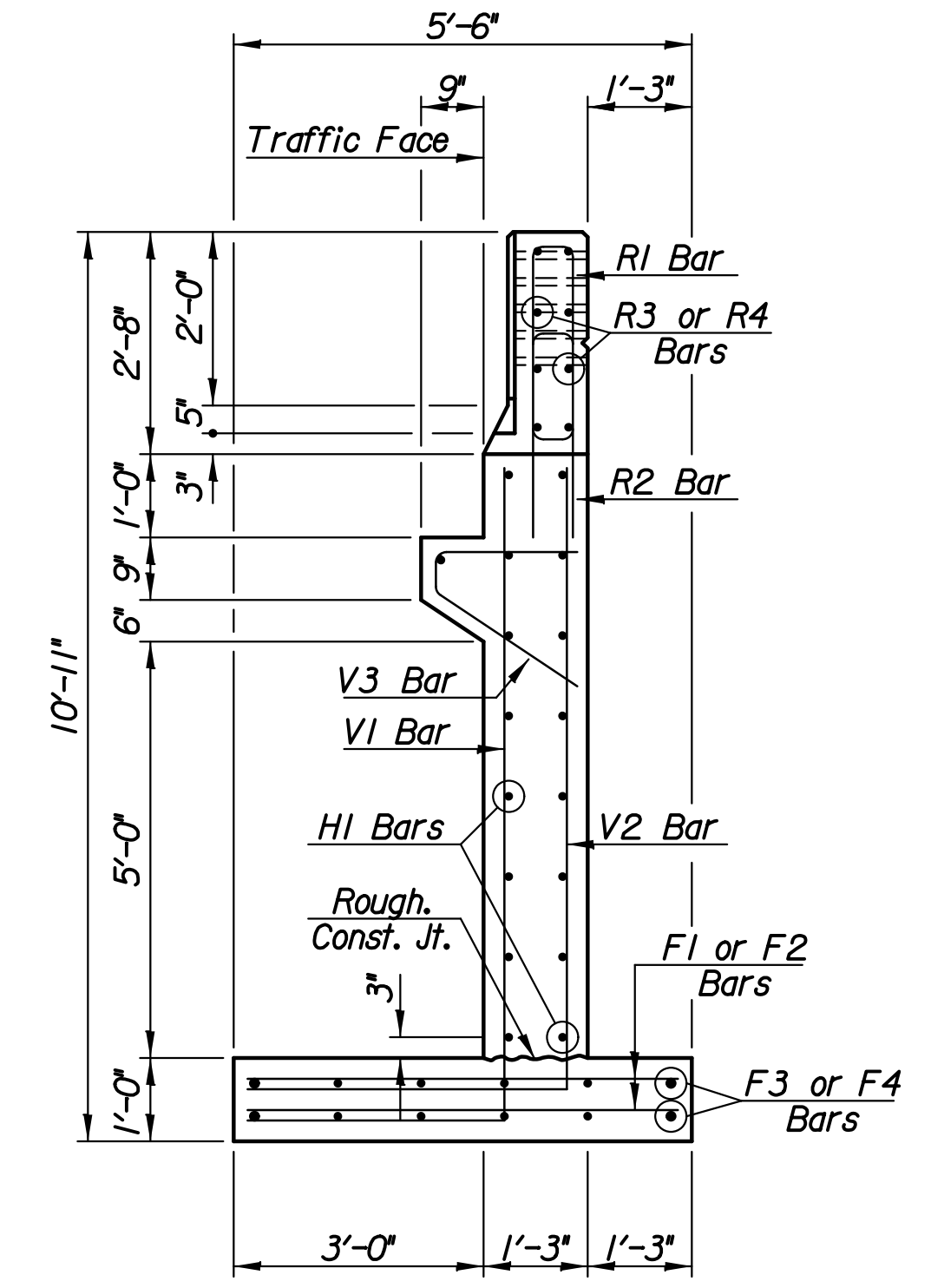


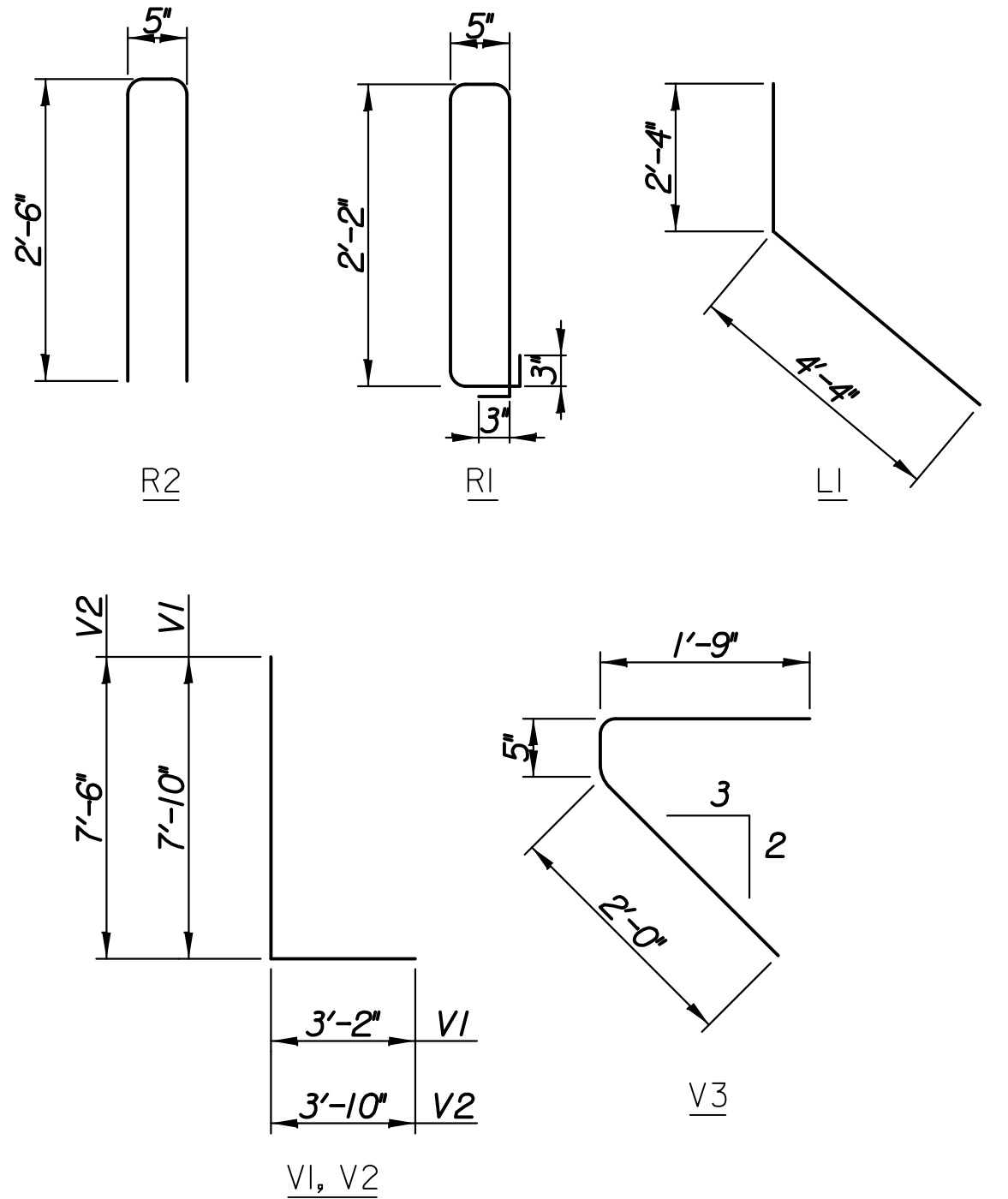
ELEVATION



SECTION A-A



SECTION B-B

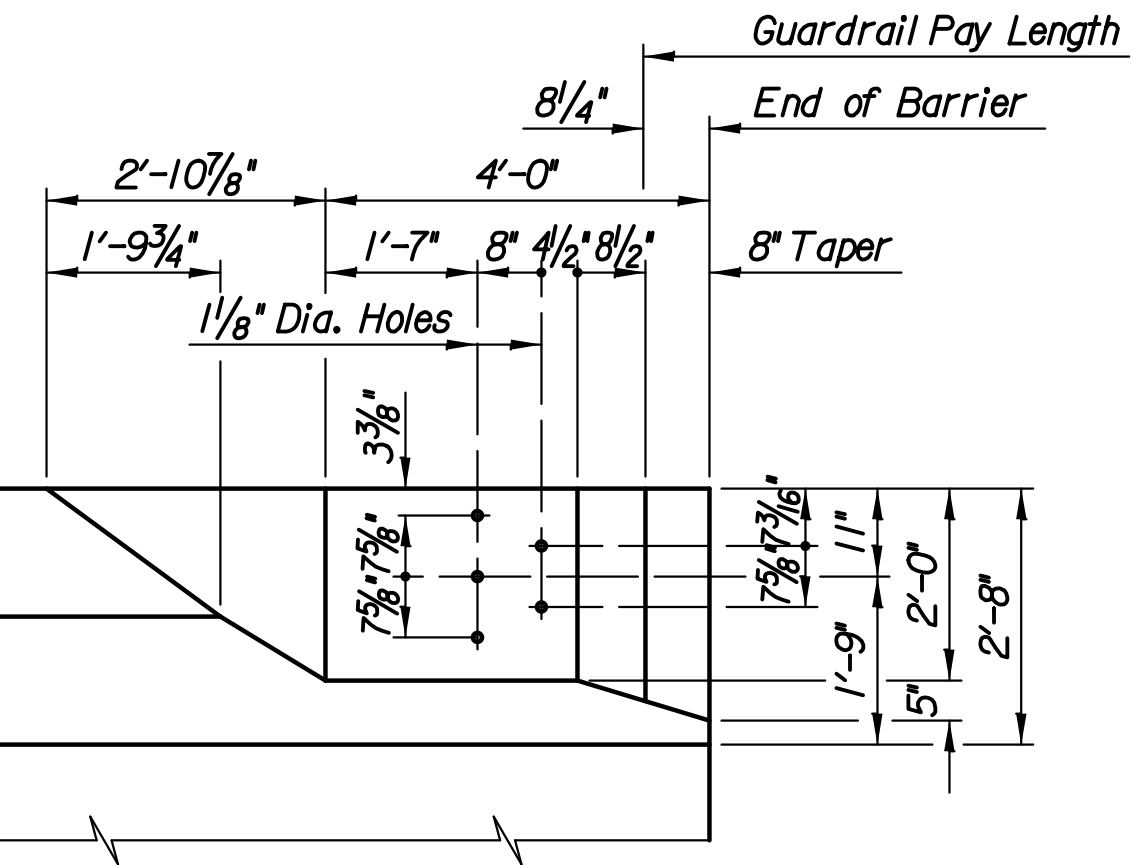
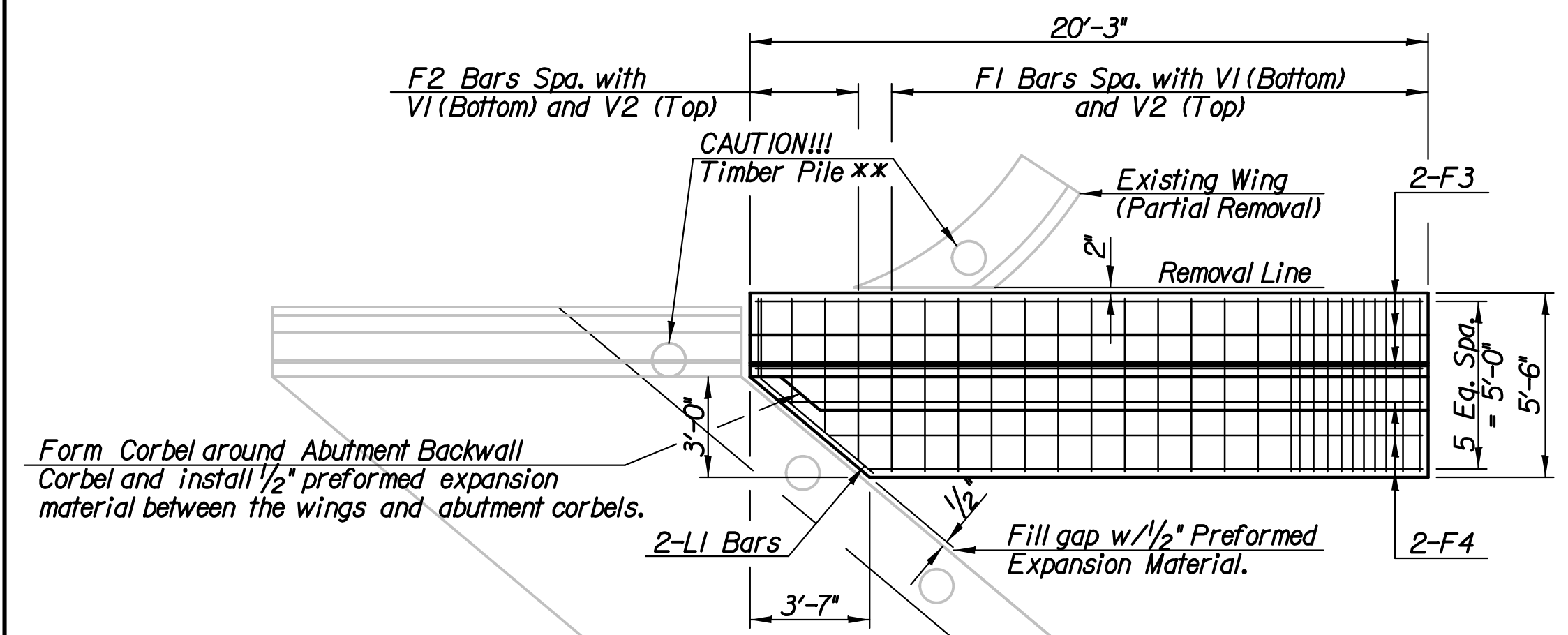


BENDING DIAGRAM

Var. From 16'-7" to 18'-11" by 1'-2" Increments F4
 Var. From 2'-4" to 4'-10" by 10" Increments F2

F2, F4

**Timber Pile locations are based off of existing plans. If the Timber Piles are exposed, excavate below the bottom of the footing 1'-0" and backfill with Flowable Fill as directed by the Engineer.

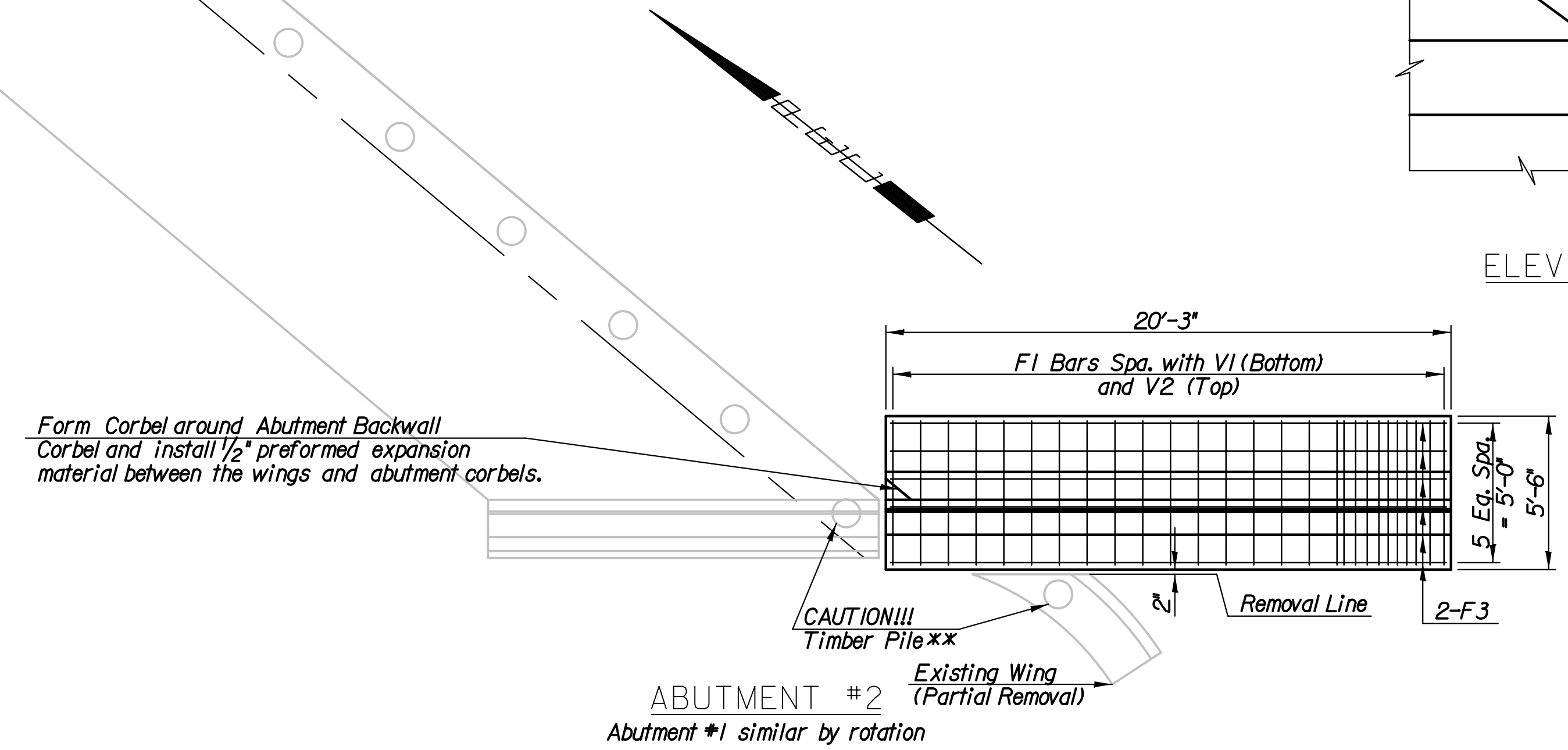


ELEVATION OF END

BAR LIST				
MARK	SIZE	FORM	NUMBER	LENGTH
F1	#5	Str.	100	5'-2"
F2	#5	Str.	8	Varies
F3	#5	Str.	18	19'-11"
F4	#5	Str.	6	Varies
H1	#5	Str.	34	19'-11"
L1	#5	Bent	2	6'-8"
R1	#5	Bent	54	5'-8"
R2	#5	Bent	54	5'-5"
R3	#5	Str.	16	17'-7"
R4	#5	Str.	16	3'-9"
V1	#5	Bent	54	11'-0"
V2	#5	Bent	54	11'-4"
V3	#5	Bent	54	4'-2"

*SUMMARY OF QUANTITIES		
ITEM	QUANTITY	UNIT
Concrete (Grade 4.0)(AE)	26.4	C.Y.
Reinforcing Steel (Grade 60)(Epoxy Coated)	4,247	LBS
Class III Excavation	68.0	C.Y.

* Quantities shown are for one abutment only (2 Required).



ABUTMENT #2
 Abutment #1 similar by rotation

Plotted By: op Date: 7/22/2011 10:43:27 AM
 FILE: I:\2010\0313\Bridges\10313-Abutment Wingwall.dgn

No.	Revision	By	Date
SOUTHEAST BLVD AT WICHITA FLOOD CONTROL CANAL			
ABUTMENT WINGWALL DETAILS			
JAMES L. ARMOUR, P.E.-CITY ENGINEER CITY OF WICHITA PROJECT NO. 472-84923			
Professional Engineering Consultants, P.A. 303 S. TOPEKA • WICHITA, KANSAS 67202 316-262-2691 • FAX 316-262-3003			
Designed by	RJM	Job No.	10313
Drawn by	RJM	Date	June, 2011
			Sht. 16 of 42