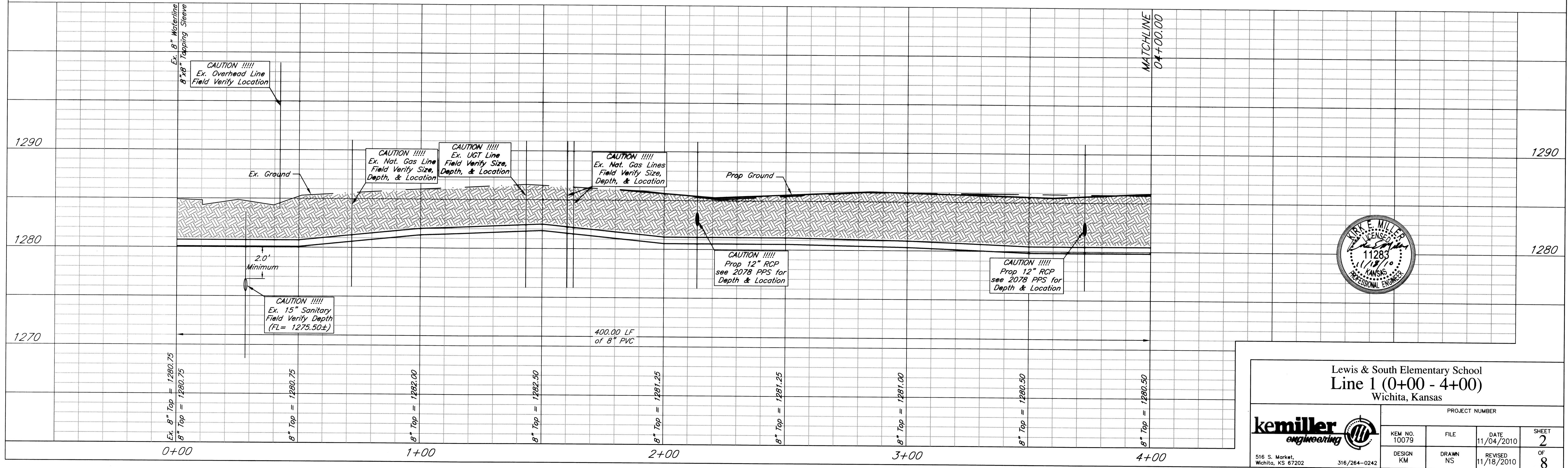
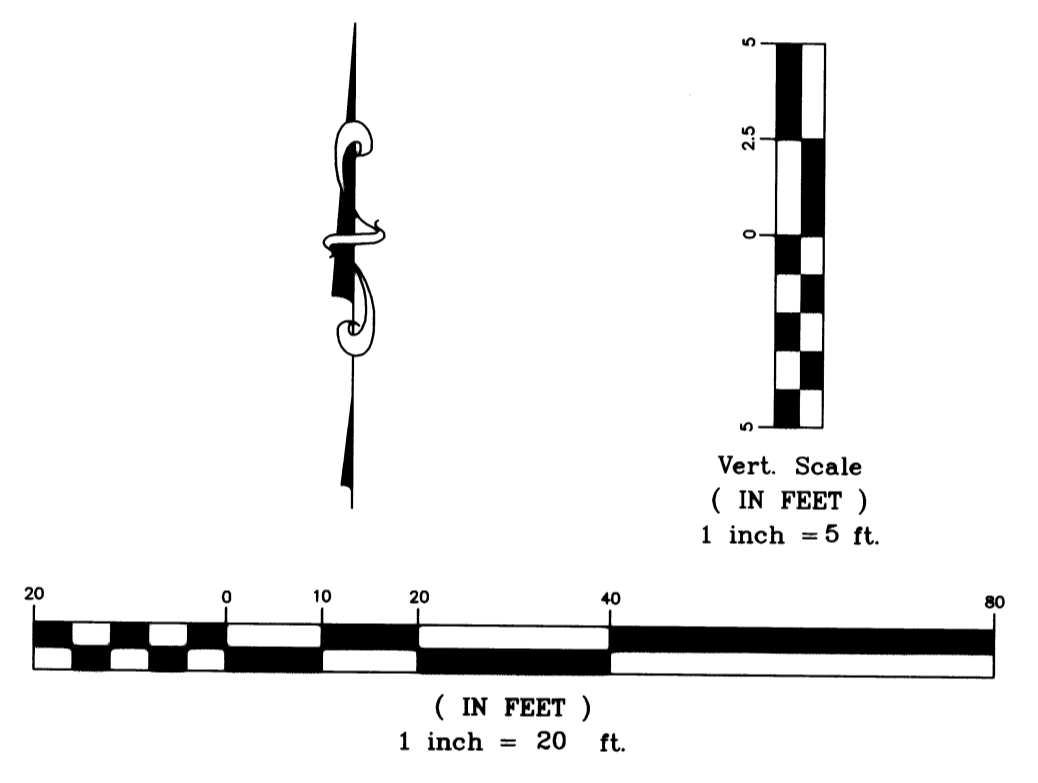
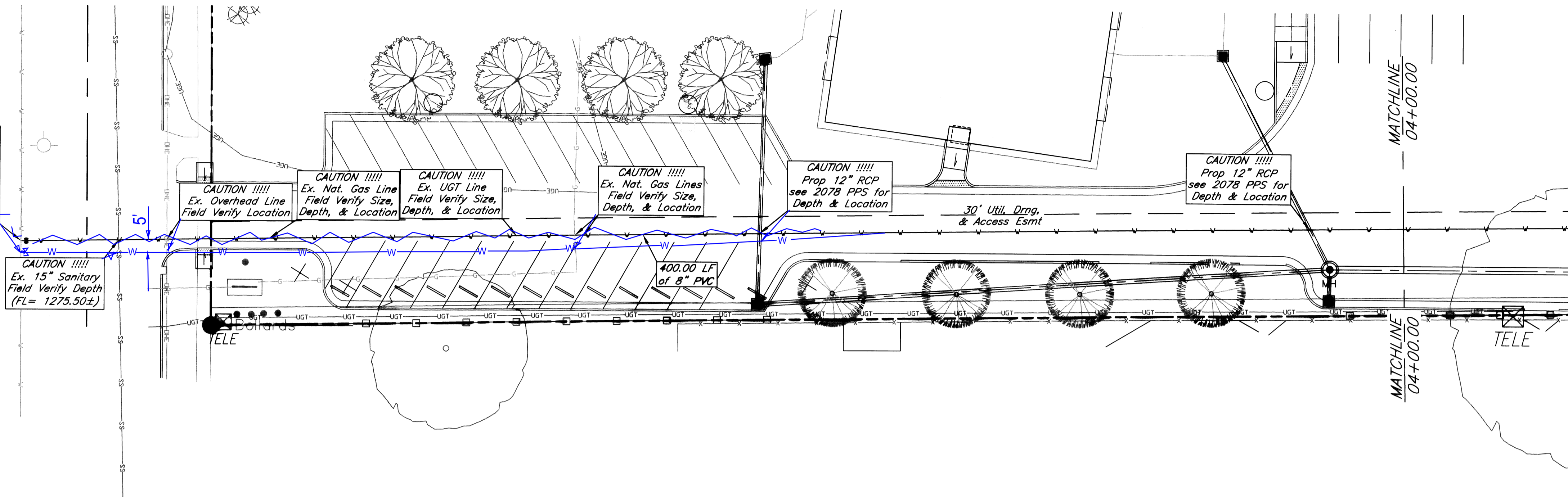


WL Sta. 00+00.00 Line 1
 *1- 8"x8" Tapping Sleeve
 *1- 8" Tapping Valve
 *1- 6" Valve Box
 Valve Box Elev. = 1284.89
 *To be Installed by COW
 *To be Paid by Contractor
 W=-4988.75, E=10020.4



Lewis & South Elementary School
 Line 1 (0+00 - 4+00)
 Wichita, Kansas

kemiller
 engineering

PROJECT NUMBER

KEM NO. 10079	FILE	DATE 11/04/2010	SHEET 2
DESIGN KM	DRAWN NS	REVISED 11/18/2010	OF 8

516 S. Market,
 Wichita, KS 67202

316/264-0242