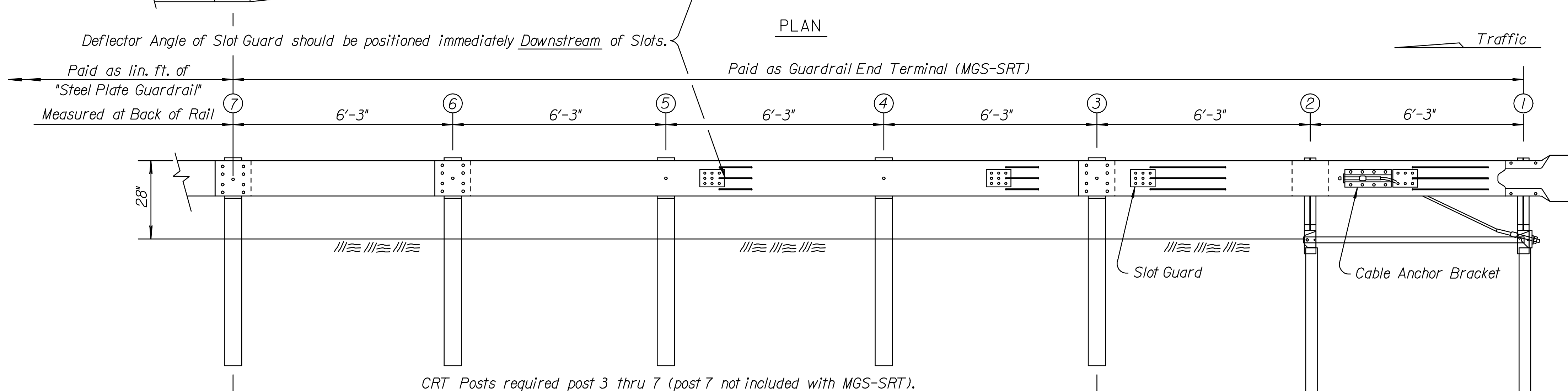
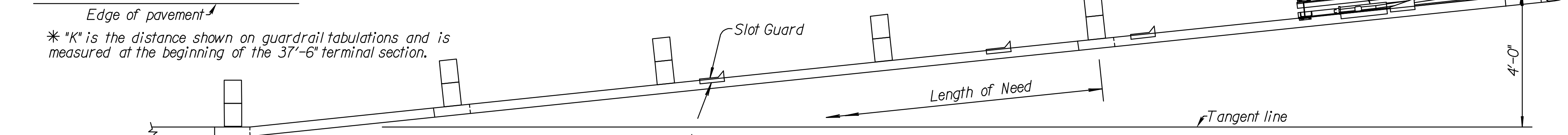
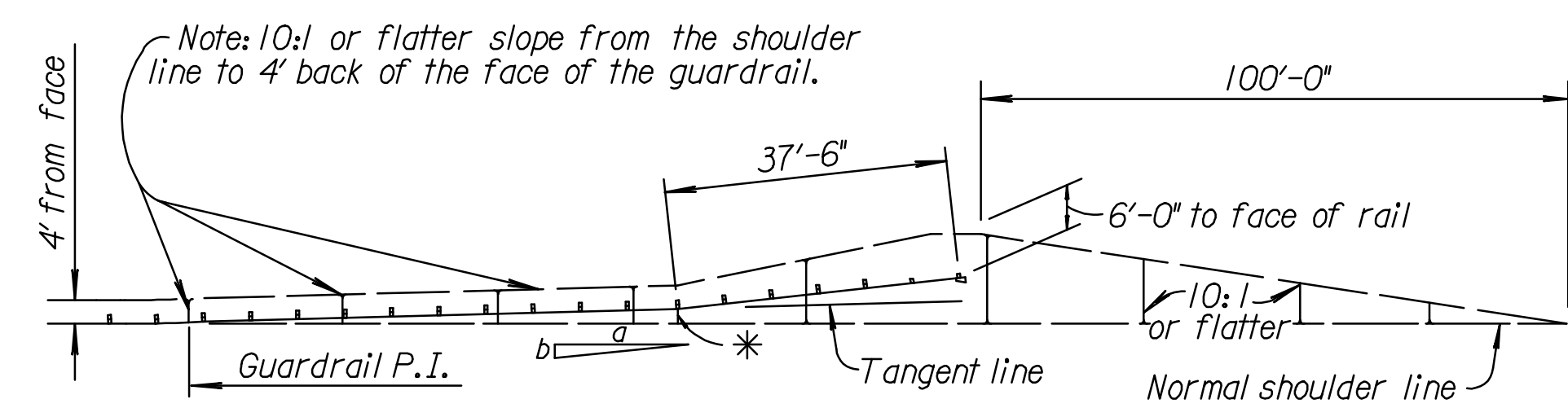
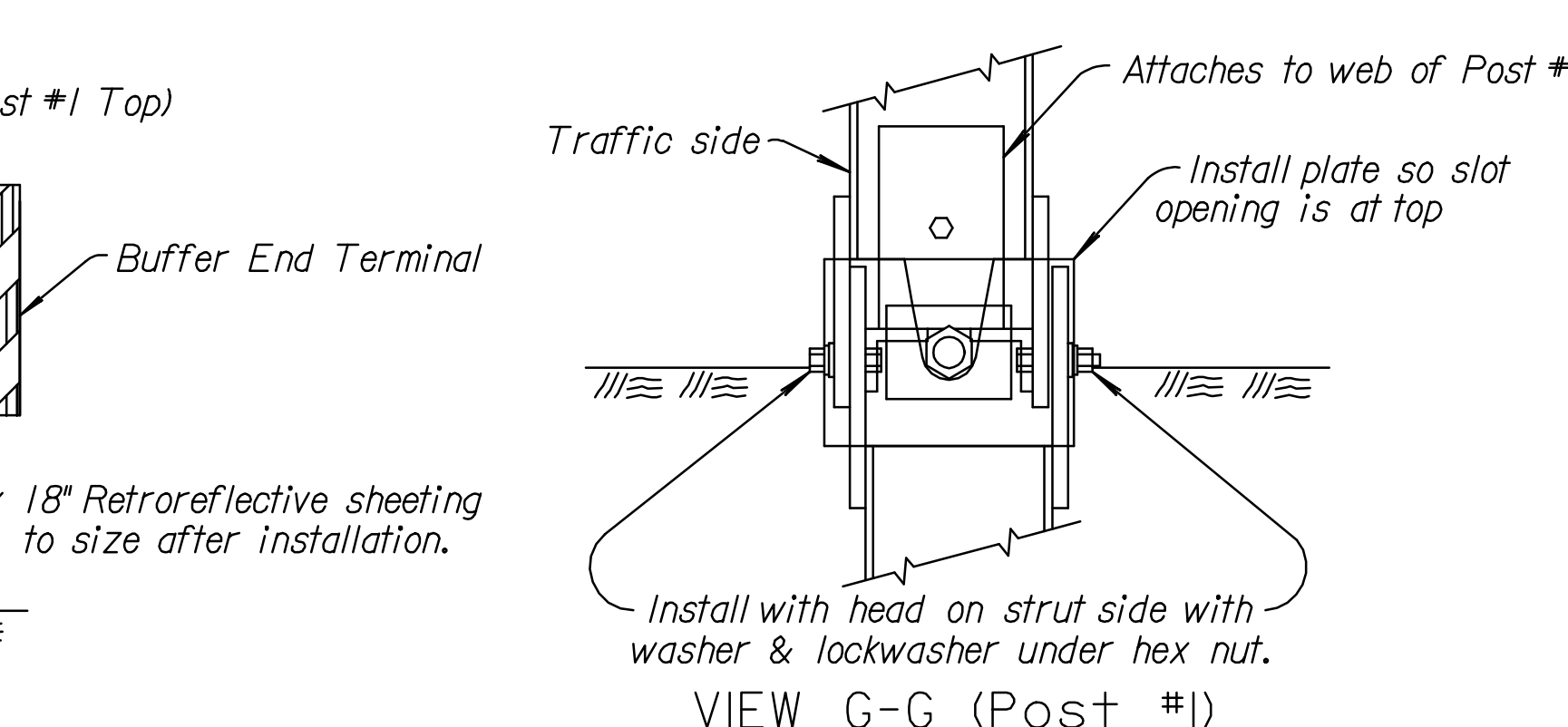
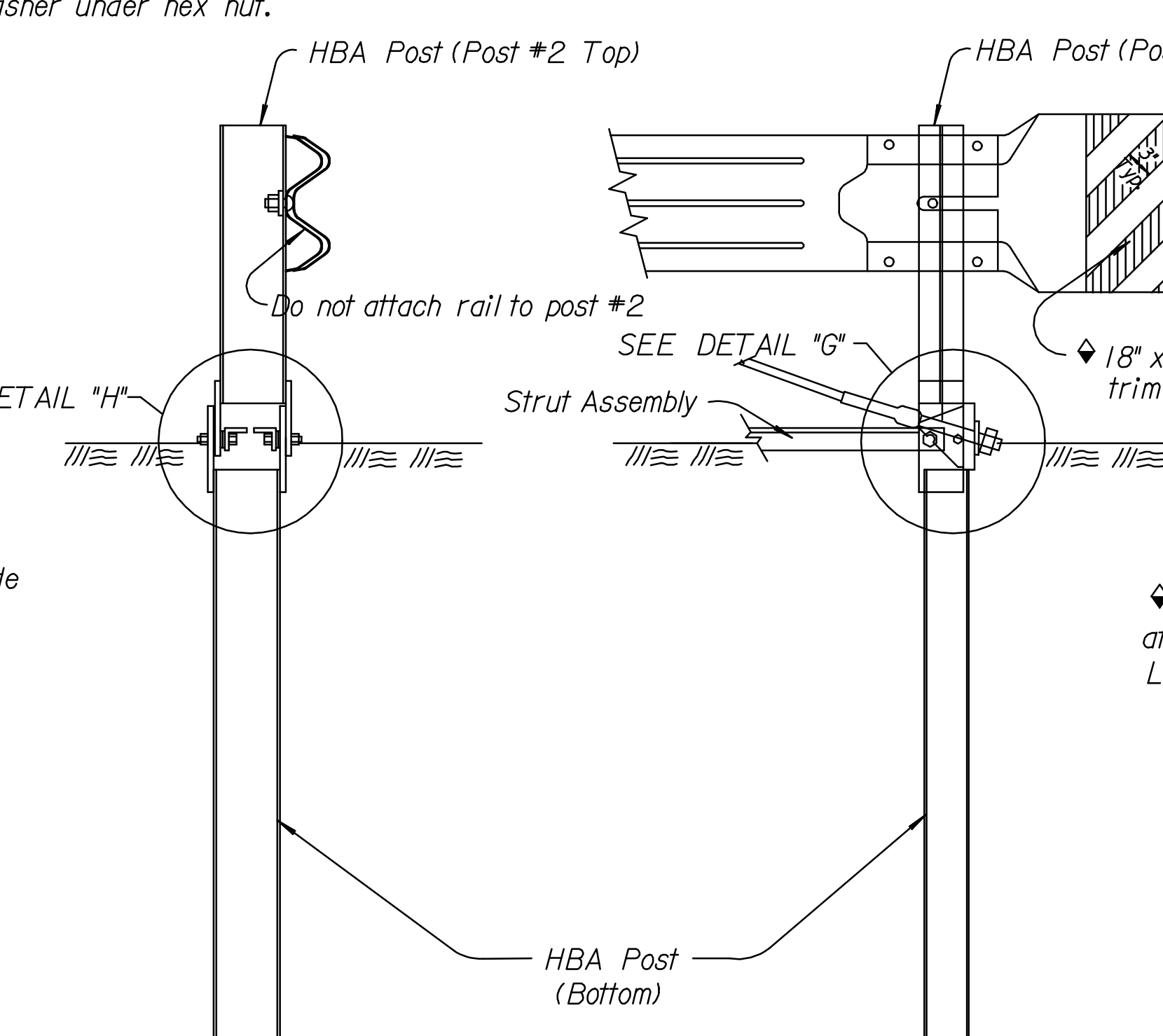
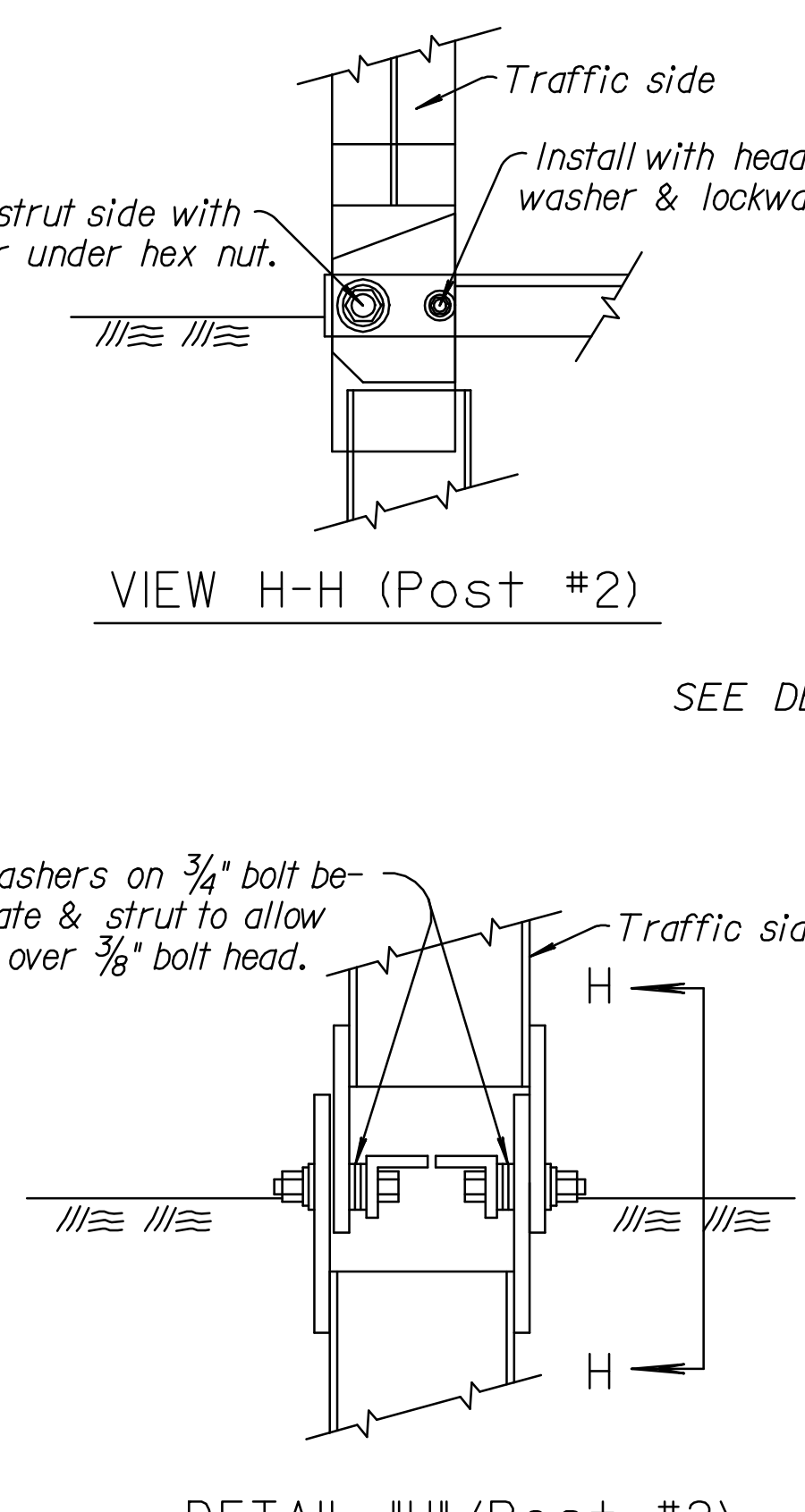
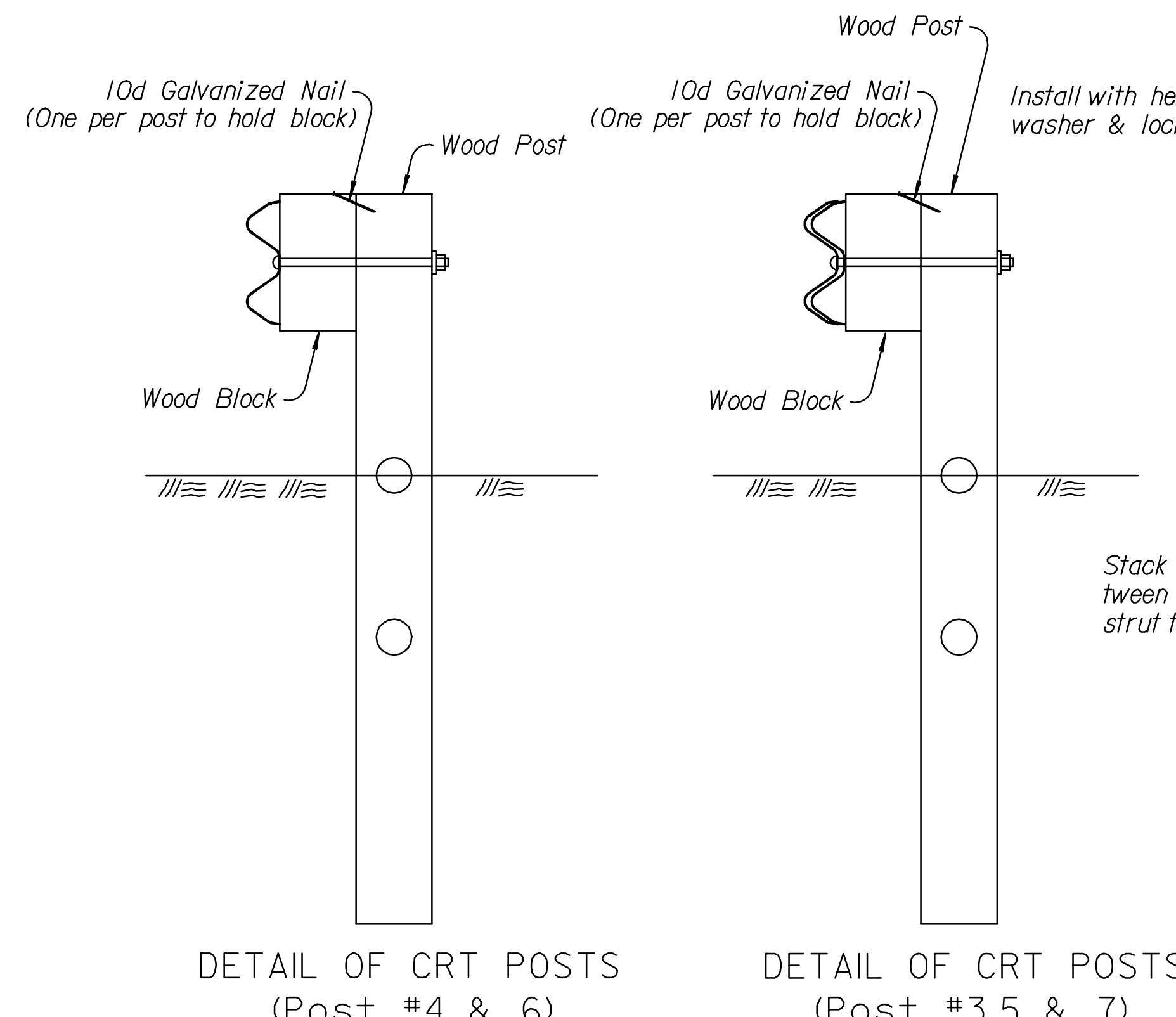
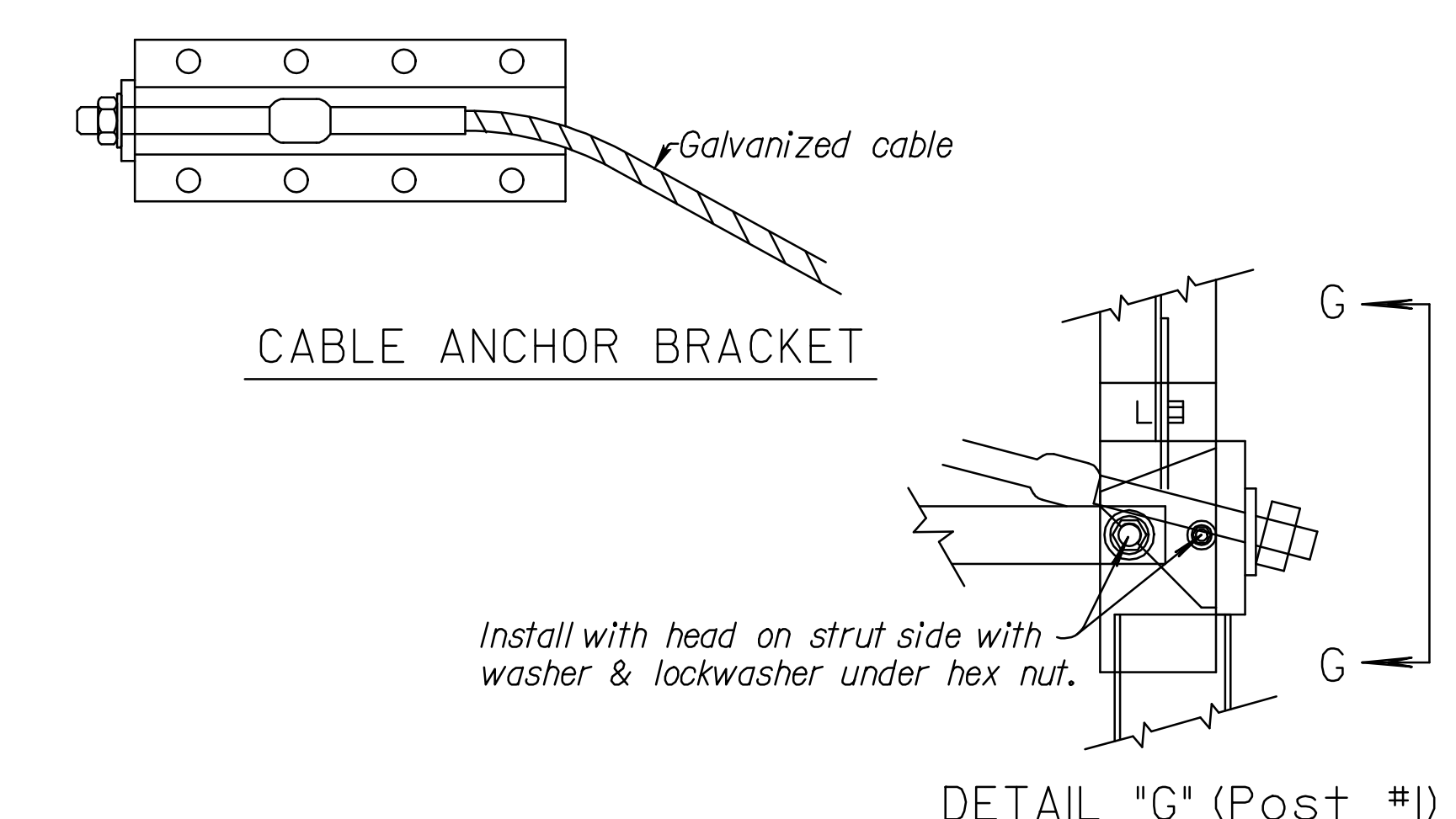


STATE	PROJECT NO.	YEAR	SHEET NO.	TOTAL SHEETS
KANSAS	468-84636	2011	10	63



GENERAL NOTE
 Use approved wood (shown & described) or steel posts ① through ⑥ on the (SRT) provided by the manufacturer. Terminal post type used is independent of post type used on the remainder of the installation. No mixing of post types allowed in guard fence run.
 Lap guardrail splices, including terminal connector, in the direction of traffic. Where traffic is temporarily carried in the opposite direction of final configuration, lap rail splices in the direction of permanent traffic.
 The cable anchor assembly must be taut. Use a locking device, (vice grips or channel lock pliers) to prevent the cable from twisting when tightening the nuts.
 When rock is encountered during installation, see Manufacturer's Installation Manual for procedure.
 End Terminal (SRT) details shown on this sheet are for "Information Only" and may not be an exact detail. See Manufacturer's Installation Manual (Furnished to Engineer) for component details and installation instructions.
 All work and materials required for installation of this terminal are paid under the bid item "Guardrail End Terminal (SRT)".
 Galvanize all steel parts after fabrication.
 See Standard Drawings RD611 and RD613 for guardrail details not shown.



Note: Apply retroreflective sheeting to the buffer end of terminal after installation. Thoroughly clean and dry steel prior to installation. Locate sheeting to provide maximum visibility to approaching traffic.

Drawn By: cp
 Plotted: 26-JUL-2011 11:42
 File: I:\2010\10291\Standards\rd621a.dgn

NO.	DATE	REVISIONS	BY	APP'D
3				
2				
1	12-14-10	Rev. notes, details & 28' rail height	S.W.K	J.O.B.

KANSAS DEPARTMENT OF TRANSPORTATION

GUARDRAIL END TERMINAL (SRT) (FLARED)

RD621A

DESIGNED	QUANTITIES	APP'D.	James O. Brewer
DESIGN CK.	DETAIL CK.	TRACED	Tracer
		QUAN. CK.	Trace CK. King