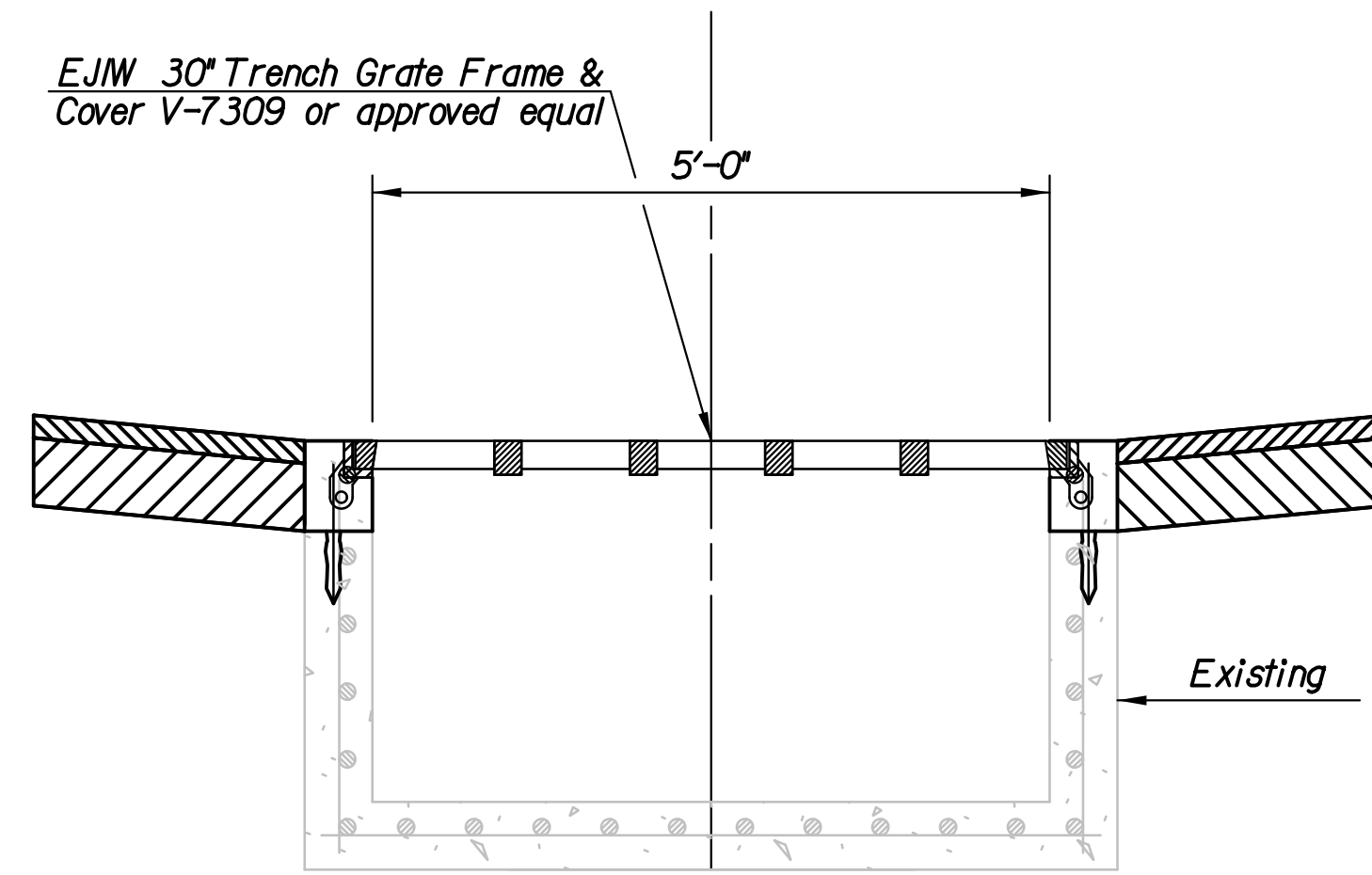
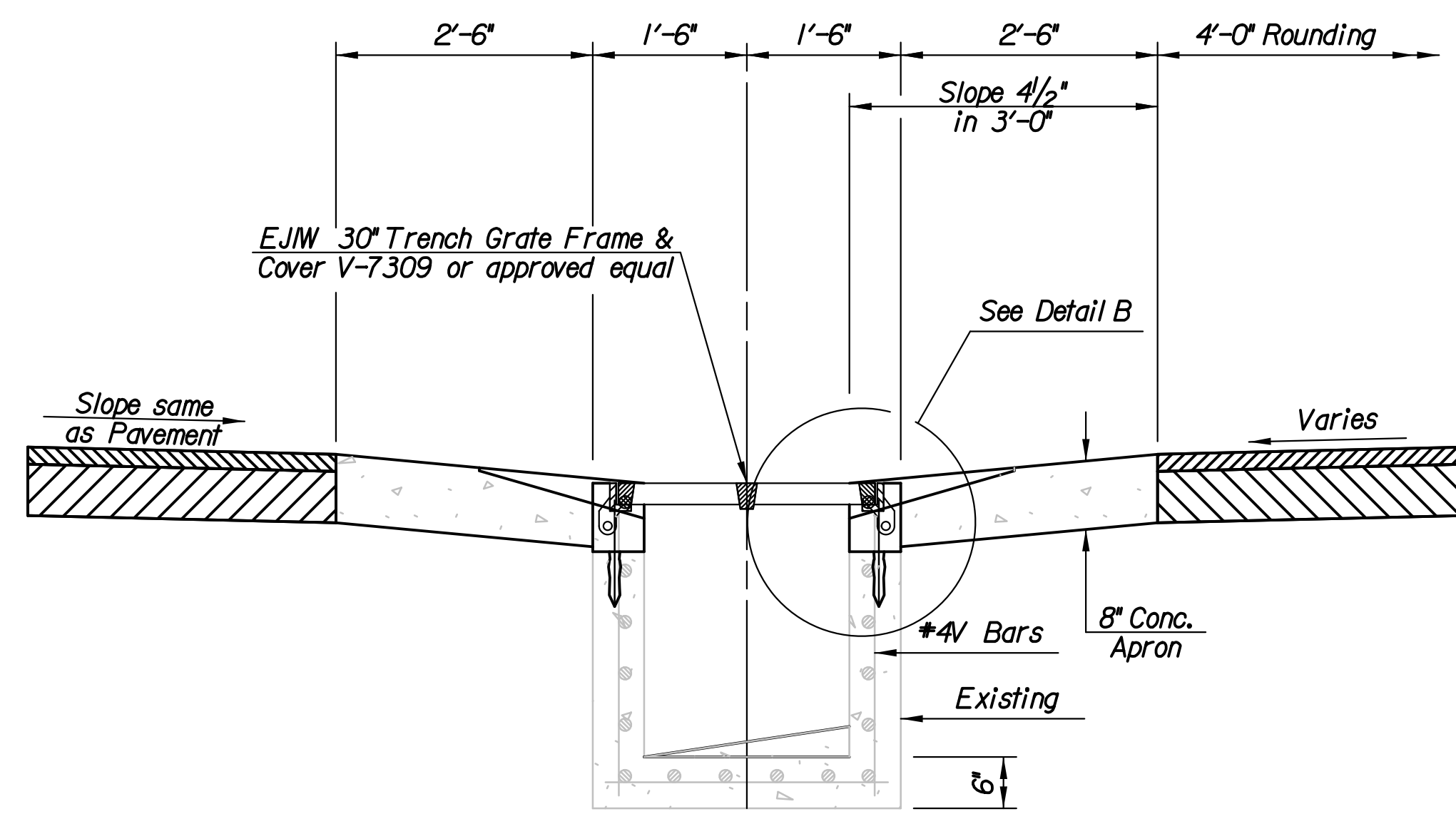


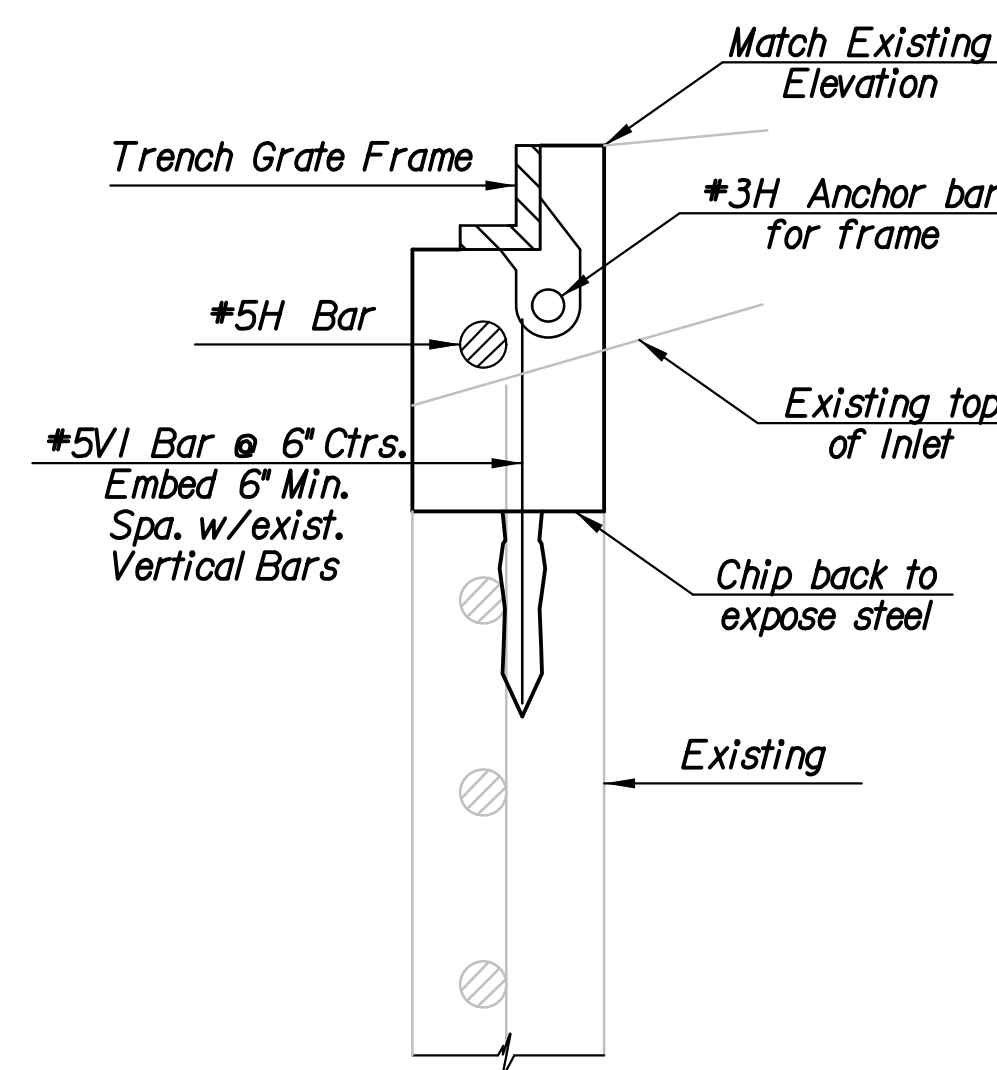
PLAN



ELEVATION



SECTION A-A



DETAIL B

GENERAL NOTES

Remove existing concrete a minimum of 6" below the existing surface to expose reinforcing steel. All reinforcing steel shall remain, any reinforcing steel damaged during concrete removal shall be replaced by the Contractor without compensation. Blast clean and straighten the existing reinforcing steel. Drill and grout new #5V bars a minimum of 6" into the existing concrete.

After the trench grate frame and cover has been installed, place the asphalt pavement for the median build-up to form a smooth transition between the pavement and the grate.

When the permanent concrete barrier is replaced over the top of the inlets the grate is to be removed and salvaged to the City Of Wichita. A minimum of 3" shall be provided between the bottom of the barrier to the top of the inlet. If the opening is less than 3" the sides shall be ground down and a concrete cap added as directed by the Engineer.

All cost required to modify the median inlet shall be included in the Per Each bid item "Inlet Adjusted".

Trench Grate Frame and Cover:
 Manufacturer: East Jordan Iron Works
 Product Description: V7300 Trench Grate and Frame
 Catalog Number: V-7309
 Or Approved Equal.

BAR LIST			
MARK	SIZE	NUMBER	LENGTH
H1	#5	2	2'-8"
H2	#5	2	5'-8"
H3	#3	2	2'-8"
H4	#3	2	5'-8"
VI	#5	32	10"

* BILL OF MATERIALS		
ITEM	QUANTITY	UNIT
Concrete	0.1	C.Y.
Reinforcing	52	LBS
Drill and Grout	32	EA
Trench Grate Frame and Cover	1	EA

* FOR INFORMATION ONLY (2 REQUIRED).

Plotted By: cp Date: 7/26/2011
 FILE: I:\2010\0291\0291-Inlet Details.dgn

No.	Revision	By	Date
KTA AT BIG SLOUGH TYPICAL MEDIAN INLET MODIFICATION JAMES L. ARMOUR, P.E.—CITY ENGINEER CITY OF WICHITA PROJECT NO. 468-34636 Professional Engineering Consultants, P.A. 303 S. TOPEKA • WICHITA, KANSAS 67202 316-262-2691 • FAX 316-262-3003			
Designed by	R.J.M.	Job No.	10291
Drawn by	C.P.	Date	August, 2011