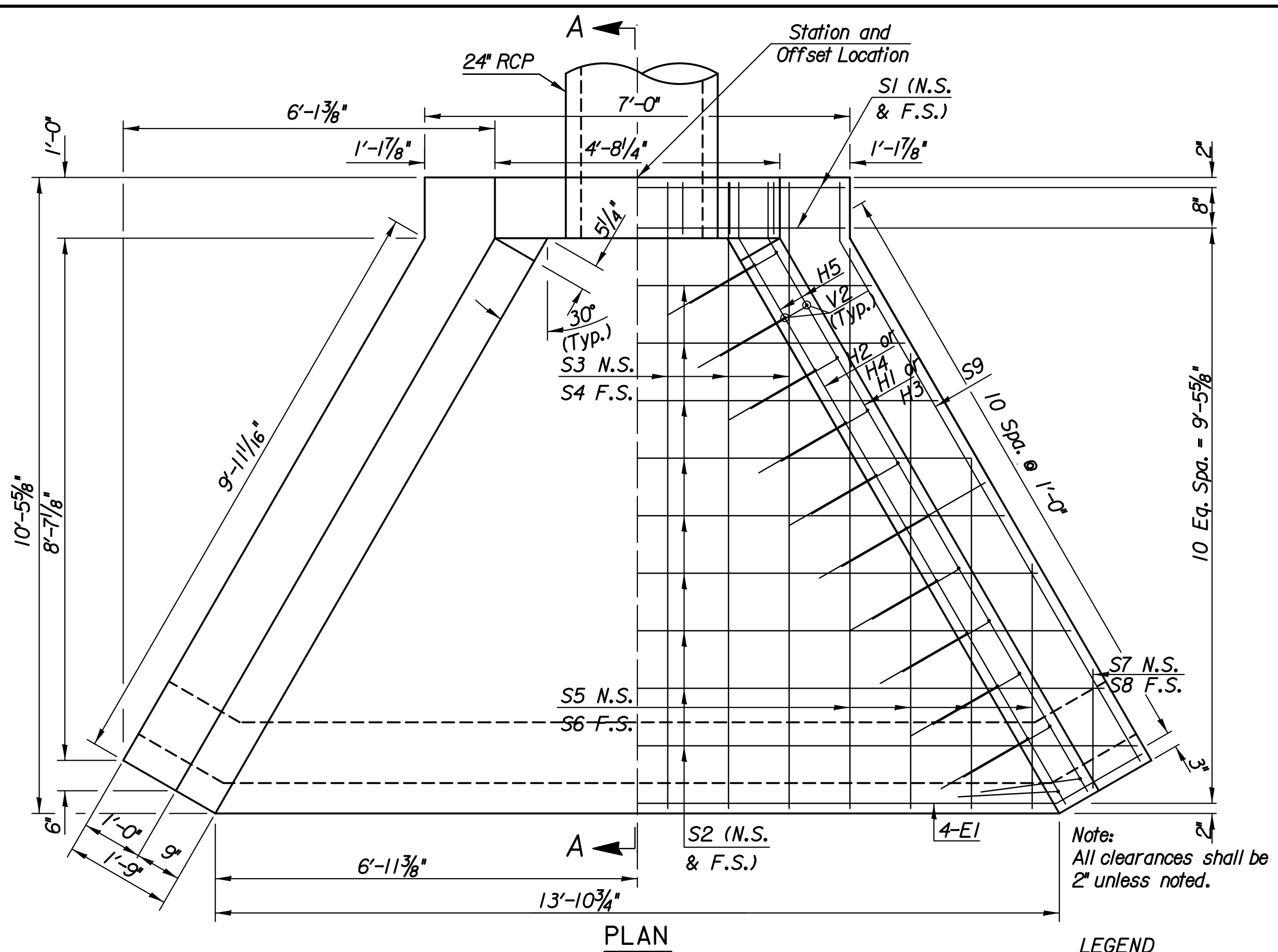


Plotted By: cp Date: 7/26/2011 11:45:33 AM
 FILE: I:\2010\N0291\N0291-24\NFLAP(V8).dgn

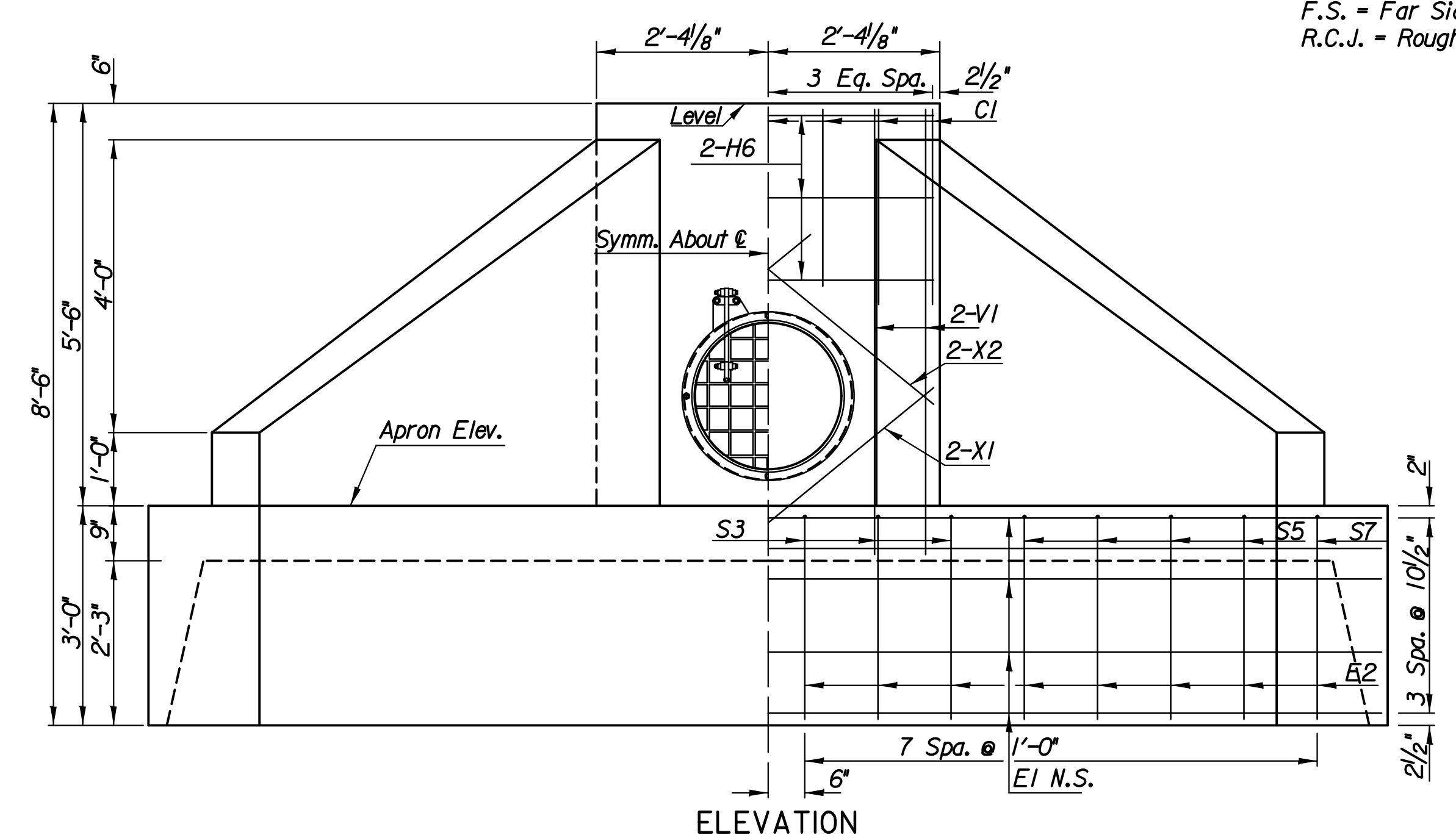


PLAN

LEGEND

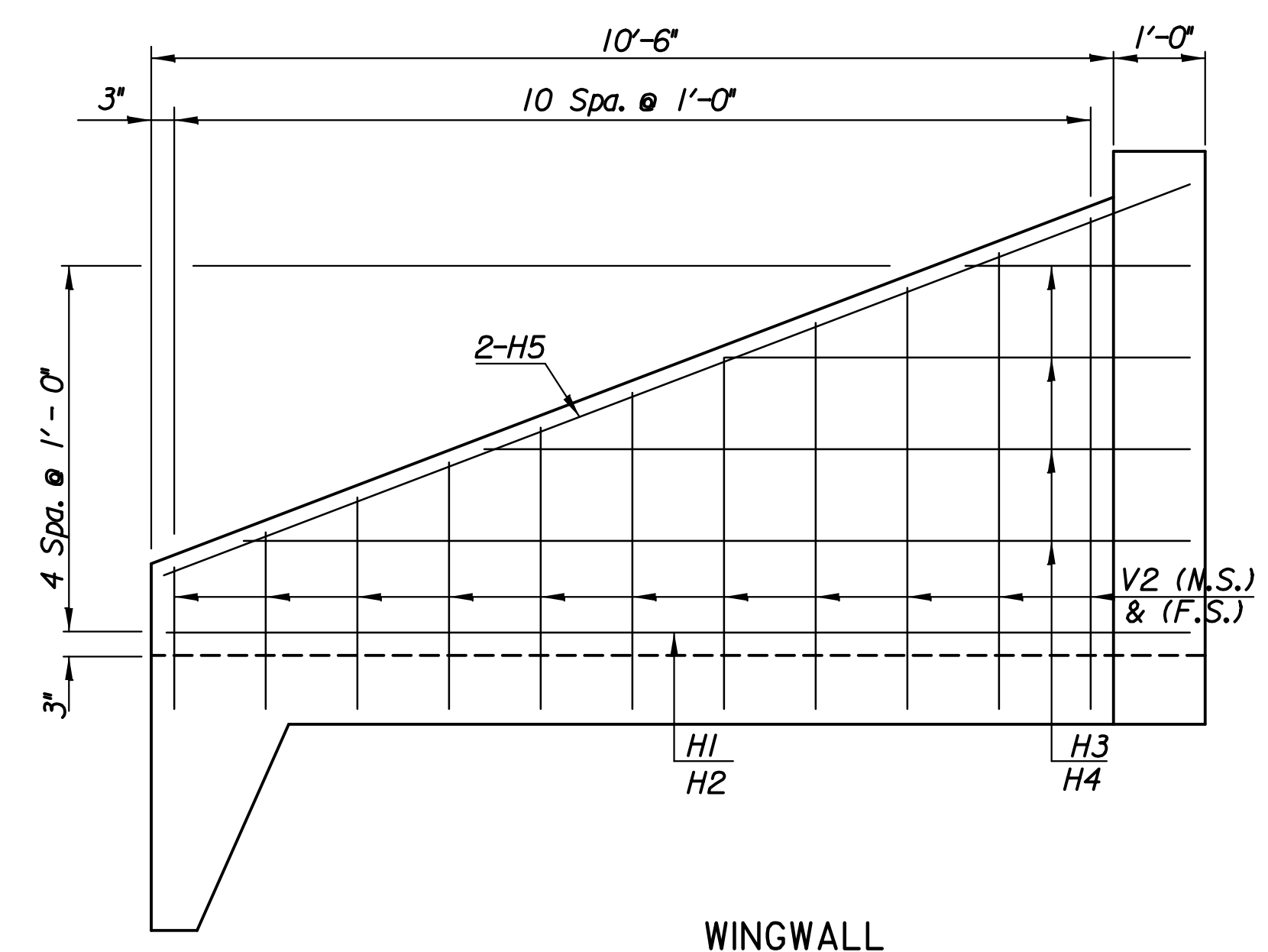
N.S. = Near Side
 F.S. = Far Side
 R.C.J. = Roughened Construction Joint

Note:
 All clearances shall be 2" unless noted.

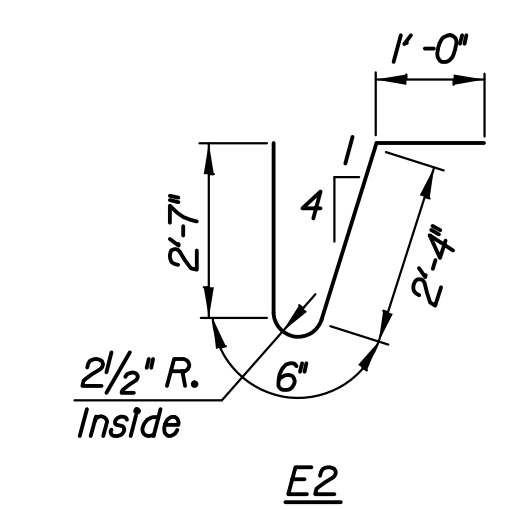


ELEVATION

HEADWALL CONTROL INFORMATION			
Station	Offset	Apron Elev.	C.M.P. E Elev.
4573+55.29	93.8' Rt.	1257.74	1258.24
4574+53.22	96.4' Rt.	1257.42	1257.92



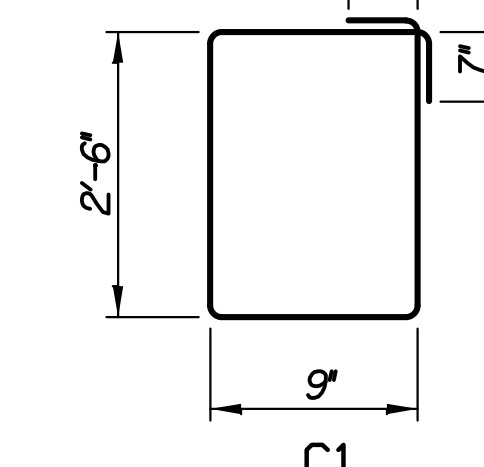
WINGWALL DEVELOPED VIEW



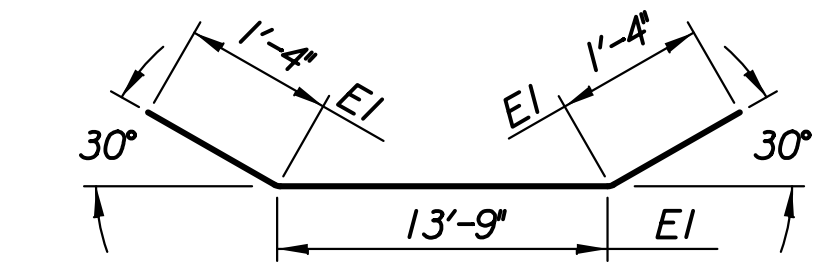
E2

Varies 7'-8" to 16'-4" by 1'-1" incr.

S2 (Cut 2 each length)



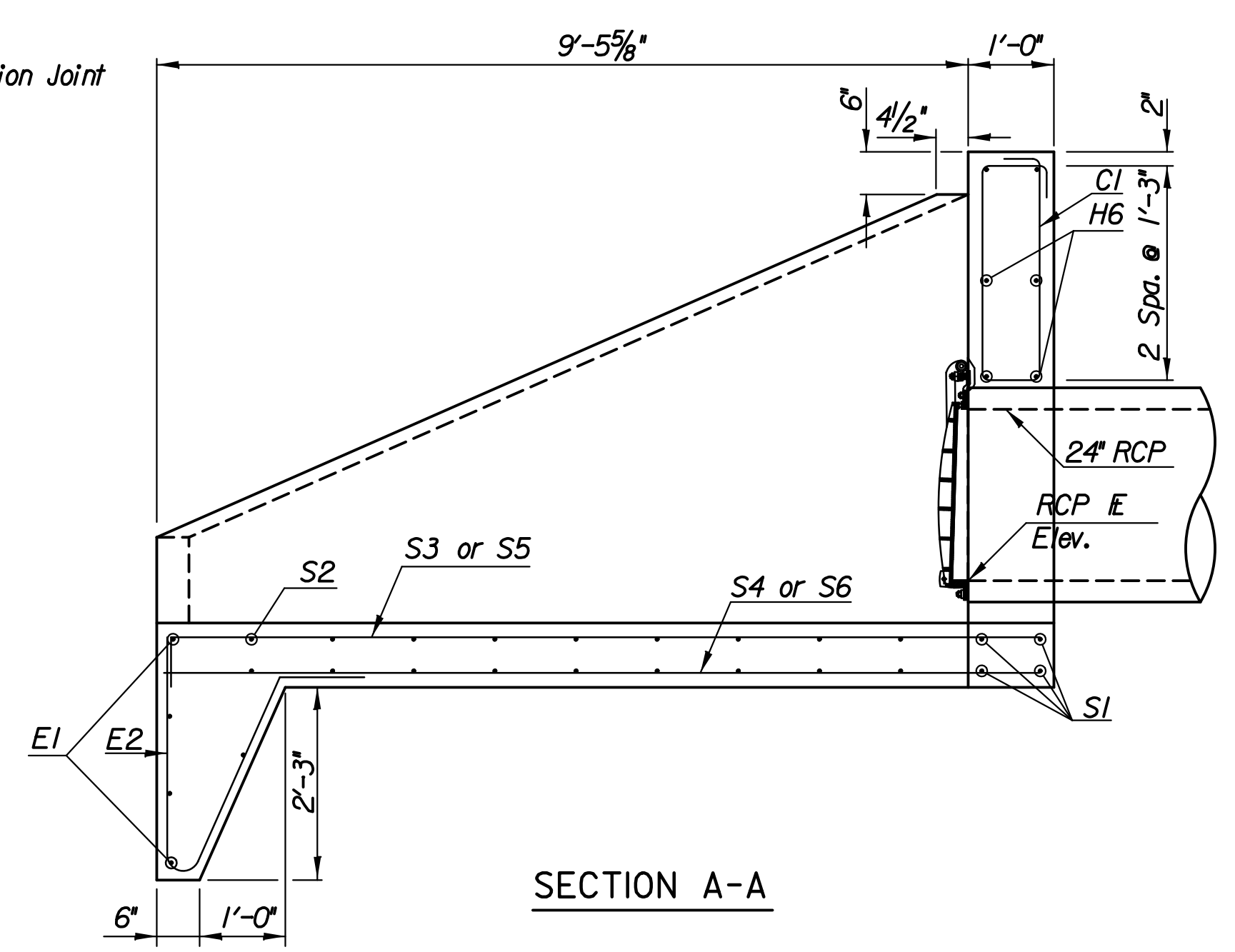
C1



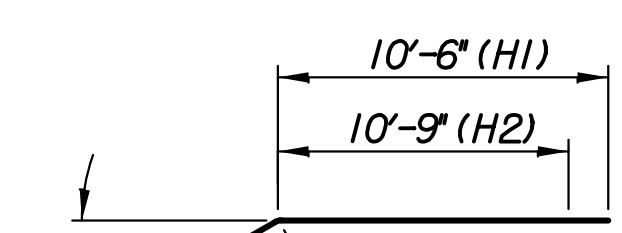
E1

Varies 3'-11" to 9'-2" by 1'-9" incr.

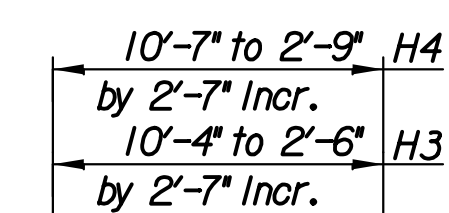
S6 (Cut 2 each length)



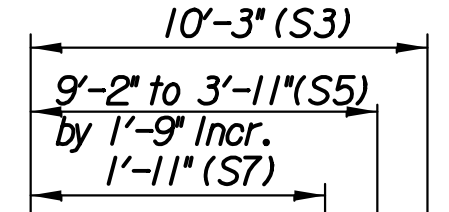
SECTION A-A



H1 & H2

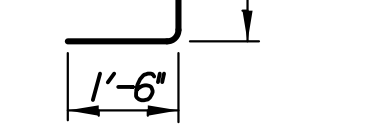


H3, H4

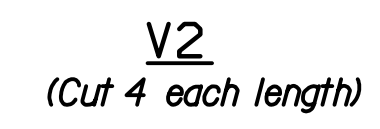


S3, S5, S7

Varies 1'-6" to 5'-3" by 4 1/2" incr.



S9



V2 (Cut 4 each length)

BENDING DIAGRAMS

All dimensions are out to out.

BILL OF MATERIALS					
REINFORCING STEEL					
Straight Bars			Bent Bars		
Mark	No.	Size	Length	Mark	No.
H5	4	*4	12'-0"	C1	7
H6	6	*4	4'-4"	E1	4
S1	4	*4	6'-8"	E2	16
S2	18	*4	*		
S4	6	*5	10'-3"		
S6	8	*5	*		
S8	2	*4	1'-11"	H1	2
V1	8	*4	5'-11"	H2	2
X1	4	*4	3'-5"	H3	8
X2	4	*4	3'-8"	H4	8
				S3	6
				S5	8
				S7	2
				S9	2
				V2	44

+ BILL OF MATERIALS Sta. 4573+55.29		
ITEM	QUANTITY	UNIT
Concrete	7.5	C.Y.
Reinforcing Steel	935	Lbs.

+ BILL OF MATERIALS Sta. 4574+53.22		
ITEM	QUANTITY	UNIT
Concrete	7.5	C.Y.
Reinforcing Steel	935	Lbs.

CONCRETE HEADWALL NOTES

CONCRETE: Bevel all exposed edges with a 3/4" triangular molding or finish with an approved edging tool. Concrete shall be as per City of Wichita Standard Specifications for Concrete Paving Mix except that it shall have a minimum 28 day compressive strength of 4,000 P.S.I. All pipes shall be flush cut prior to being cast into the headwall.

REINFORCING STEEL: All dimensions relative to reinforcing steel are to centerline of bar unless otherwise noted. All reinforcing steel shall conform to A.S.T.M. designation A615 Grade 60 and shall be epoxy coated.

PAYMENT: A deduction in concrete quantities has been made for the pipe opening. The "24" R.C. Headwall" shall be paid for at the unit price bid per each in place including concrete, reinforcing steel, excavation and all other miscellaneous materials, labor tools, equipment and incidentals necessary to complete the work. Quantities shown are for information only.

No.	Revision	By	Date
KTA AT BIG SLOUGH			
24" HEADWALL DETAILS			
JAMES L. ARMOUR, P.E. - CITY ENGINEER CITY OF WICHITA PROJECT NO. 468-34636			
Professional Engineering Consultants, P.A. 303 S. TOPEKA • WICHITA, KANSAS 67202 316-262-2691 • FAX 316-262-3003			
Designed by	RAS	Job No.	10291
Drawn by	CP	Date	August, 2011

