

# PUBLIC WATER LINE PLANS AS BUILT PLANS

TO SERVE



Contractor: Mies  
 Inspector: Don Eddingfield,  
 Baughman Co.  
 pdf's by KEK, 8/26/11

## MARKET STORE #5856-00

CENTRAL AVENUE & WEST STREET  
 WICHITA, SEDGWICK COUNTY, KANSAS  
 CITY OF WICHITA PRIVATE PROJECT NO.  
 1572PPW (607853)

American Hydrants  
 and Valves

### SHEET INDEX (PUBLIC)

- C-13.1 TITLE SHEET
- C-13.2 PUBLIC WATER LINE 'A' PLAN & PROFILE
- C-13.3 VARIOUS WATER LINE DETAILS
- C-13.4 STANDARD WATER ASSEMBLY DETAILS
- C-13.5 STANDARD WATER SERVICE DETAILS
- C-13.6 STANDARD VAULT DETAILS AND METER ASSEMBLIES

### SHEET INDEX (PRIVATE)

- C-12.1 WATER LINE 'A', 'B-1' & 'B-2' PLAN & PROFILE
- C-12.2 PRIVATE WATER LINE DETAILS
- C-12.3 STANDARD WATER ASSEMBLY DETAILS

### OWNERS' ADDRESS

WAL-MART STORES, INC.  
 702 S.W. 8th STREET  
 BENTONVILLE, AR 72716  
 PH. (479) 273-4000

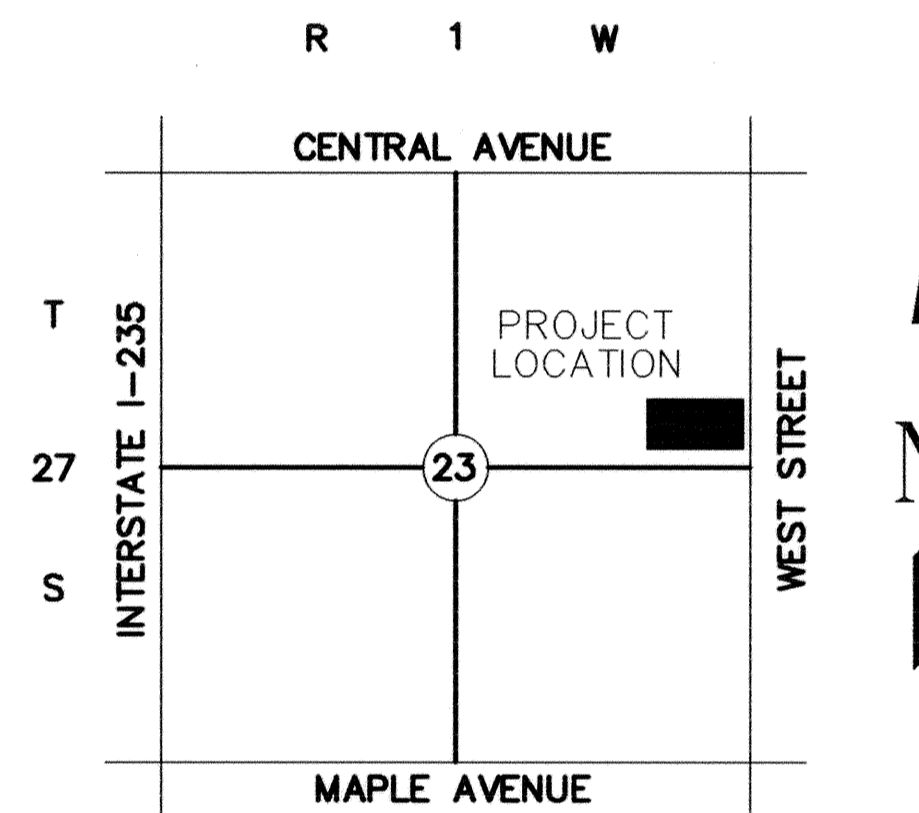
### CITY RESOURCE LIST

<b>CITY MANAGER</b> CITY MANAGER'S OFFICE CITY OF WICHITA 455 N. MAIN - CITY HALL WICHITA, KS 67202 CONTACT: ROBERT LAYTON PH: (316) 268-4351 FAX: (316) 858-7712	<b>CITY ENGINEER</b> PUBLIC WORKS CITY OF WICHITA 455 N. MAIN - CITY HALL WICHITA, KS 67202 CONTACT: JIM ARMOUR PH: (316) 268-4266 FAX: (316) 268-4114	<b>PLANNING / ZONING</b> METROPOLITAN AREA PLANNING DEPARTMENT CITY OF WICHITA 455 N. MAIN - CITY HALL WICHITA, KANSAS 67202 CONTACT: BILL LONGNECKER PH: (316) 268-4494 FAX: (316) 268-4390	<b>PUBLIC WORKS</b> CITY OF WICHITA 455 N. MAIN - CITY HALL WICHITA, KANSAS 67202 CONTACT: STEVE KING PH: (316) 268-4288 FAX: (316) 268-4114
--	---	--	--

### BENCH MARKS:

SITE BENCHMARK-1 "c" Chiseled on Top NW Cor. Conc. Fume Elevation=1308.39 (NAVD 88)	SITE BENCHMARK-1 "c" Chiseled on Top of Walk Elevation=1311.57 (NAVD 88)	SITE BENCHMARK-1 "c" Chiseled on Top Centerline of Median Elevation=1309.71 (NAVD 88)
---	--	---

## 2010



LOCATION MAP  
 NOT TO SCALE

- (1) An effort has been made to locate and show approximate location of underground utility lines. Buried utilities are not necessarily shown. It is the Contractor's responsibility to locate and preserve all utility services.
- (2) Proposed utility services have been coordinated with the local utility companies. Contractor is responsible for contacting all utility companies prior to construction.
- (3) All quantity estimates shown in this set of plans are the Engineer's estimate and are provided for general information only! The contractor is solely responsible for calculating his/her own quantities!
- (4) All construction to be in accordance with the sitework specifications, unless otherwise noted. Contractor shall contact City of Wichita regarding Licensing, Insurance Verification and Bonding requirements.
- (5) Contractor shall acquire Licensing to work in City of Wichita, shall maintain Insurance Verification per Walmart and City's requirements and shall submit necessary bonds to satisfy City of Wichita's requirements.

**NOTE TO CONTRACTOR  
 CALL KANSAS ONE  
 1-800-522-6543**

This number is to be used for information on the location of all underground utilities. Contact this number prior to any excavation.

APPROVED AS NOTED  
 BY CITY ENGINEER OF WICHITA,  
 BY WICHITA WATER & SEWER DEPARTMENT,  
 & BY WICHITA FIRE DEPARTMENT

Public Works *Julianne Kallman* 2-22-11  
 Water & Sewer *Don Eddingfield* 1-23-11  
 Fire *Don Eddingfield* 3-2-2011

### NOTE TO CONTRACTORS

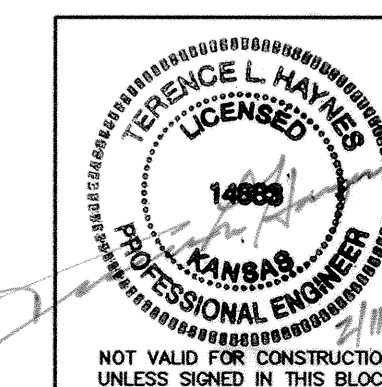
**Public Property:**  
 Inspection and testing for the waterline is to be provided by a Licensed Consulting Engineering Firm under contract with the Owner/Developer. Said inspection to be in accordance with the City of Wichita standard construction engineering practices and certified by a Professional Engineer Licensed in the state of Kansas. No work shall be performed in dedicated easements or public right-of-way by the Contractor without such inspection nor shall any work be commenced without written authorization by the City Engineer. All Construction and Materials shall comply with the City or Wichita Specifications and Standards (on file and available in the City Engineer's Office).

**Private Property:**  
 Installation and testing for the fire protection line is to be performed by a City of Wichita licensed fire protection contractor in accordance with the fire codes as adopted by the City of Wichita. All material and construction practices for the fire protection line shall comply with the fire codes as adopted by the City of Wichita (available from the City of Wichita Fire Department). The Contractor shall not commence work without notification and approval of the Wichita Fire Department. Inspection of the fire protection line is to be provided by a licensed Engineering Firm under contract with the Owner/Developer and the Fire Department. The contractor shall not start work until the project inspector is assigned to the project and present on the site. Any work done without inspection will be required to be uncovered for inspection.

I, Terence L. Haynes, Kansas Professional Engineer, #14583, do hereby state that these Public water line plans, prepared by me or under my direct, responsible supervision, are in strict conformance with the applicable Codes of the City of Wichita and the sound principles and practice of the Civil Engineering profession

*Terence L. Haynes*  
 TERENCE L. HAYNES, P.E. #14583

<b>TITLE SHEET PRIVATE WATER LINE PLANS</b>			
<b>WALMART MARKET #5856-00</b>			
<b>CENTRAL AVE. &amp; WEST STREET WICHITA, KANSAS</b>			
<b>SMC Consulting Engineers, P.C.</b> 815 West Main - Oklahoma City, OK 73106 PH: 405-232-7715 Fax: 405-232-7859 KANSAS CERTIFICATE OF AUTHORIZATION NO. E-335 EXP. DEC. 31, 2011			
<b>SMC</b>			
No.	Revision	By	Date
1	City Review Comments	MDS	12/21/10
2	Update of Certification of Authorization Date	KST	12/29/10
DATE: 12/02/10		SCALE:	SHEET NO.
DRAWN BY: TAB		NONE	C-13.1
PROJECT NO.: 4348.10		ENGINEER: TERENCE L. HAYNES, P.E. #14583	



**SMC Consulting Engineers, P.C.**  
 Oklahoma City, Oklahoma