

# CONSTRUCTION PLANS FOR

# WATER DISTRIBUTION SYSTEM IMPROVEMENTS

## AND

# MAIN BOOSTER PUMP STATION

## CITY OF BENTON, BUTLER COUNTY, KANSAS

CITY OF WICHITA PRIVATE PROJECT NO. 1594 PPW (607853)  
 CITY OF WICHITA CITY ENGINEER - JAMES L. ARMOUR, P.E.

### INDEX OF SHEETS

#### WATERLINE

1. TITLE SHEET
2. KEY MAP AND GENERAL NOTES
3. WATERLINE PLAN/PROFILE
4. WATER METER VAULT DETAILS
5. STANDARD WATER ASSEMBLY DETAILS
- 6.-8. SOIL EROSION BMP DETAILS

#### BOOSTER PUMP STATION ← THESE SHEETS INCLUDED FOR INFORMATION ONLY. NOT A PART OF 1594 PPW

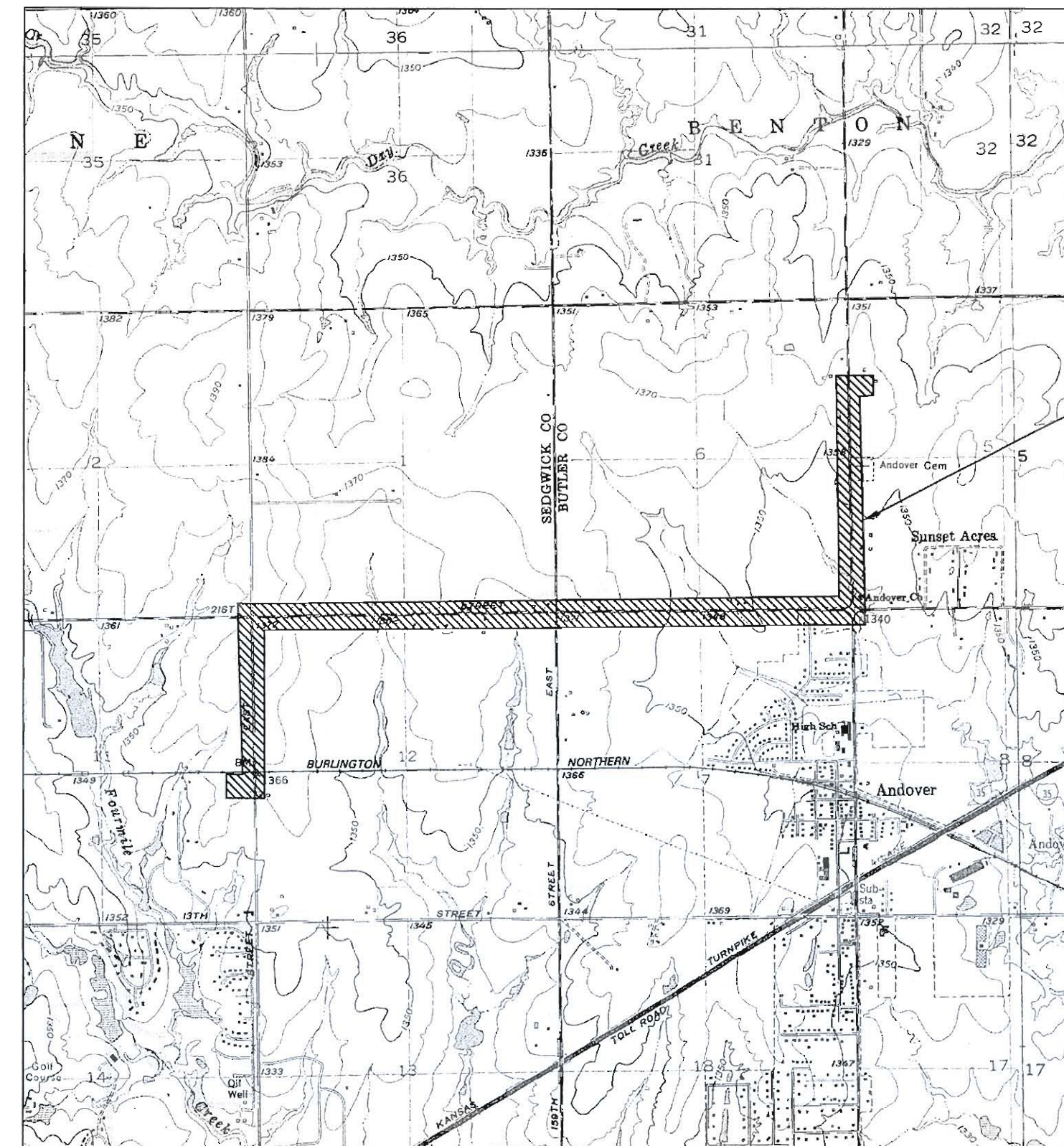
9. EXISTING BOOSTER PUMP STATION DEMOLITION PLAN
10. MAIN BOOSTER PUMP STATION SITE IMPROVEMENT PLAN
11. PROCESS DESIGN AND SCHEMATICS / PIPE AND EQUIPMENT SCHEDULE
12. MAIN BOOSTER PUMP STATION - PLAN AND SECTIONS
13. MAIN BOOSTER PUMP STATION BUILDING PLAN
14. MISCELLANEOUS DETAILS
15. BEDDING AND BACKFILL DETAILS
16. ELECTRICAL LEAD SHEET
17. ELECTRICAL SITE PLAN/CONTROLS SCHEMATIC
18. ELECTRICAL PLAN

#### PUBLIC OFFICIALS

MAYOR      KEN GILE

CITY COUNCIL    DAN CARPENTER  
                          JOHN GAHAGAN  
                          KATHY GOMEZ  
                          JAMES THOMPSON  
                          SCOTT HARTLEY

CITY CLERK    JOYCE CASADY



#### CONSTRUCTION SCHEDULE/SEQUENCE

1. CONTRACTOR SHALL CONSTRUCT WATERLINE NO. 1, WATER METER VAULT AND 6" DOUBLE CHECK VALVE ASSEMBLY WITH MANHOLE AND ABANDON THE EXISTING CITY OF BENTON WATERLINE ALONG 21ST STREET NORTH AS SHOWN ON SHEET 2. INSTALL TEMPORARY PIPING TO MAINTAIN SERVICE TO BENTON. COORDINATE TEMPORARY PIPING WITH CITY OF BENTON, DALE SHAFFER. ALL WORK ASSOCIATED WITH THIS WORK INCLUDING PIPING, WATER METER VAULT, 6" DOUBLE CHECK VALVE ASSEMBLY WITH MANHOLE, AND EXISTING WATERLINE ABANDONMENT SHALL BE COMPLETED NO LATER THAN AUGUST 12, 2011.
2. ABANDON THE EXISTING BOOSTER PUMP STATION AND DRIVE AS SHOWN ON PLAN SHEET 9. CONTRACTOR SHALL COORDINATE ABANDONMENT OF THE EXISTING BOOSTER PUMP STATION WITH THE CITY OF WICHITA AND THE CITY OF BENTON. CONTRACTOR SHALL COORDINATE THE TIE IN TO THE EXISTING 16" PVC WATERLINE WITH THE CITY OF WICHITA AND THE TIE IN TO THE EXISTING 6" PVC WATERLINE WITH THE CITY OF BENTON. CONTRACTOR SHALL ALSO COORDINATE THE ABANDONMENT OF THE EXISTING 6" WATERLINE AS SHOWN ON SHEETS 2 AND 3 WITH THE CITY OF BENTON.
3. CONSTRUCT THE NEW BOOSTER PUMP STATION INCLUDING SITE GRADING, 18" CMP, PUMPS, BUILDING, CONTROLS, AND PIPING TO THE EXISTING 6" PVC CITY OF BENTON WATERLINE.
4. TIE IN THE PROPOSED 6" WATERLINES CONNECTING THE NEW BOOSTER PUMP STATION TO THE EXISTING 6" PVC CITY OF BENTON WATERLINE AND ABANDON THE PORTION OF 6" WATERLINE AS SHOWN ON PLAN SHEET 10. CONTRACTOR SHALL COORDINATE THE TIE IN LOCATIONS WITH THE CITY OF BENTON PRIOR TO PERFORMING TIE IN TO EXISTING 6" PVC WATERLINE.
5. CONSTRUCT THE DRIVE TO THE NEW BOOSTER PUMP STATION AS SHOWN ON PLAN SHEET 10.
6. CONTRACTOR SHALL RELOCATE THE DOUBLE CHECK VALVE ASSEMBLY TO THE BOOSTER PUMP STATION AND SHALL INSTALL NEW 6" PIPING AS NOTED ON SHEET NO. 4.

APPROVED AS NOTED  
 BY CITY ENGINEER OF WICHITA

Water Mains (Engineering) *[Signature]* 6/21/11

Water Mains (Water) *[Signature]* 6/22/11

NOTE TO CONTRACTORS

**PUBLIC PROPERTY:**  
 Inspection and testing for the waterline is to be provided by a Licensed Consulting Engineering Firm under contract with the Owner/Developer. Said inspection to be in accordance with the City of Wichita standard construction engineering practices and certified by a Licensed Professional Engineer licensed in the State of Kansas. No work shall be performed in dedicated easements or public right-of-way by the Contractor without such inspection nor shall any work be commenced without written authorization by the City Engineer. All Construction and Materials shall comply with the City of Wichita Specifications and Standards (on file and available in the City Engineer's Office).

## JUNE 2011

PLANS PREPARED BY  
**PROFESSIONAL ENGINEERING CONSULTANTS, P.A.**  
 ENGINEERS  
 WICHITA, KANSAS

**RECORD DRAWING**  
 CONTRACTOR: Dondlinger and Sons Construction Co., Inc.  
 INSPECTOR: Clint Rogers (Allied Laboratories)  
 .pdf by: R. Johnson (PEC) 08/30/2011

