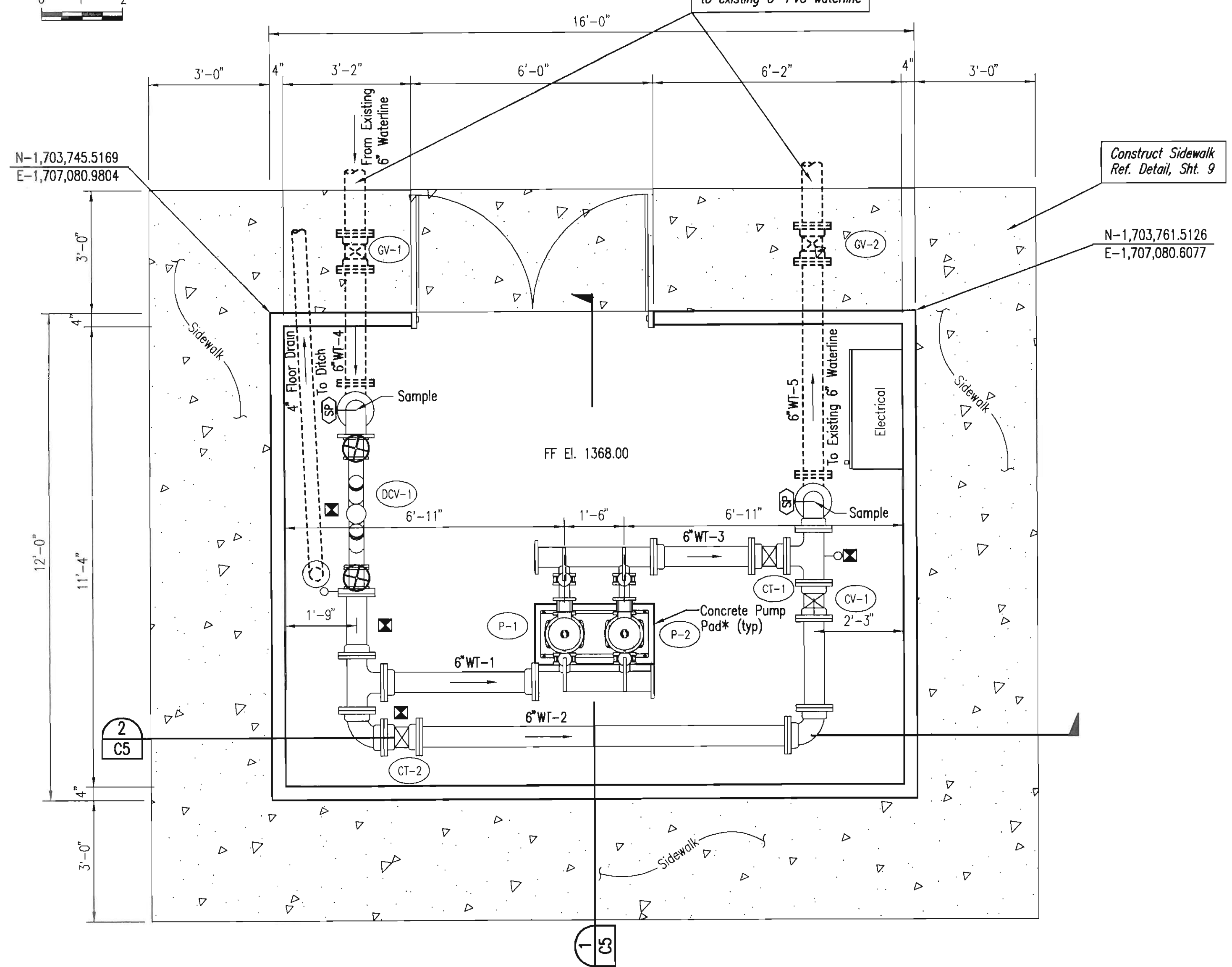
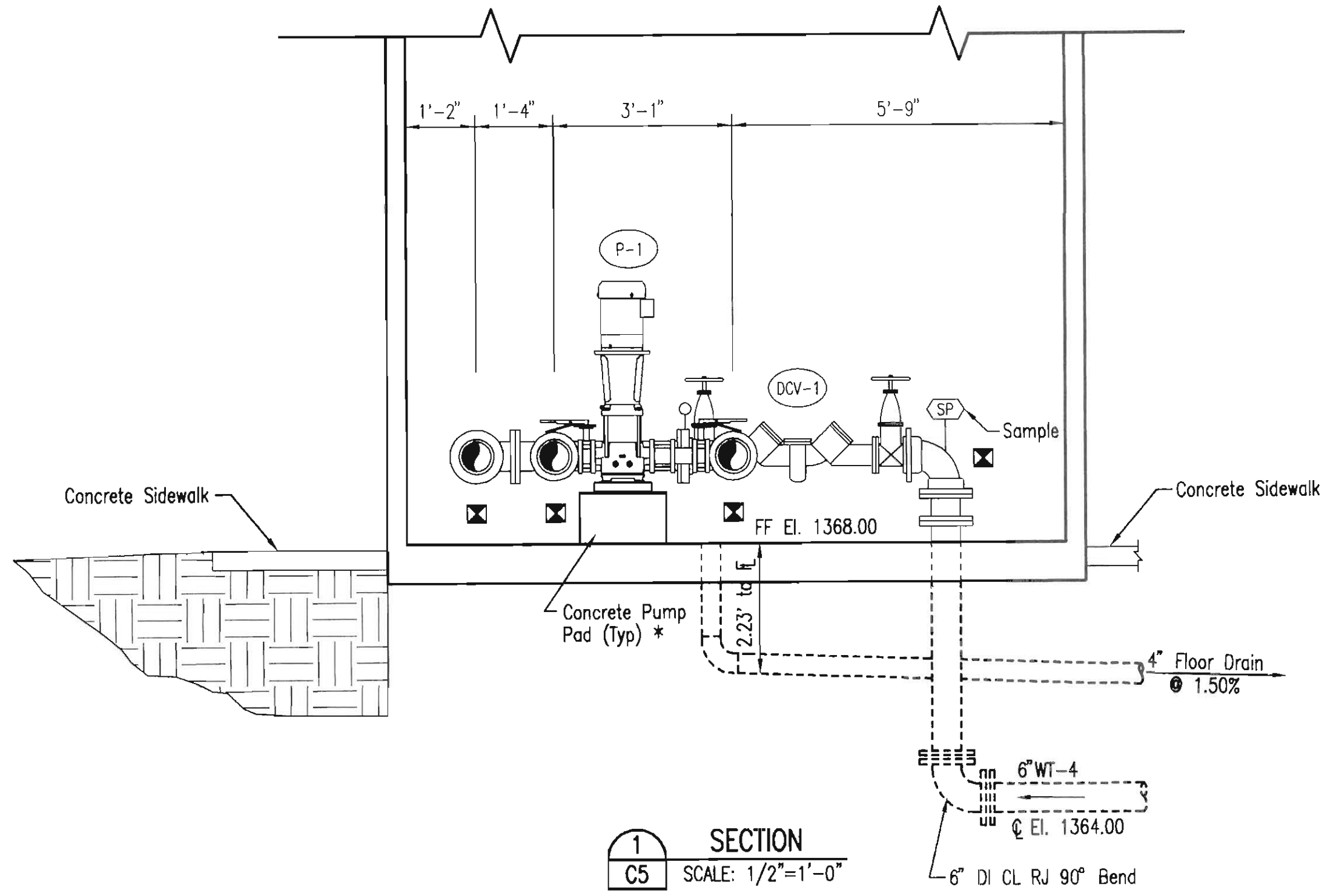


**PLAN**  
SCALE: 1/2"=1'-0"

N-1,703,745.5169  
E-1,707,080.9804

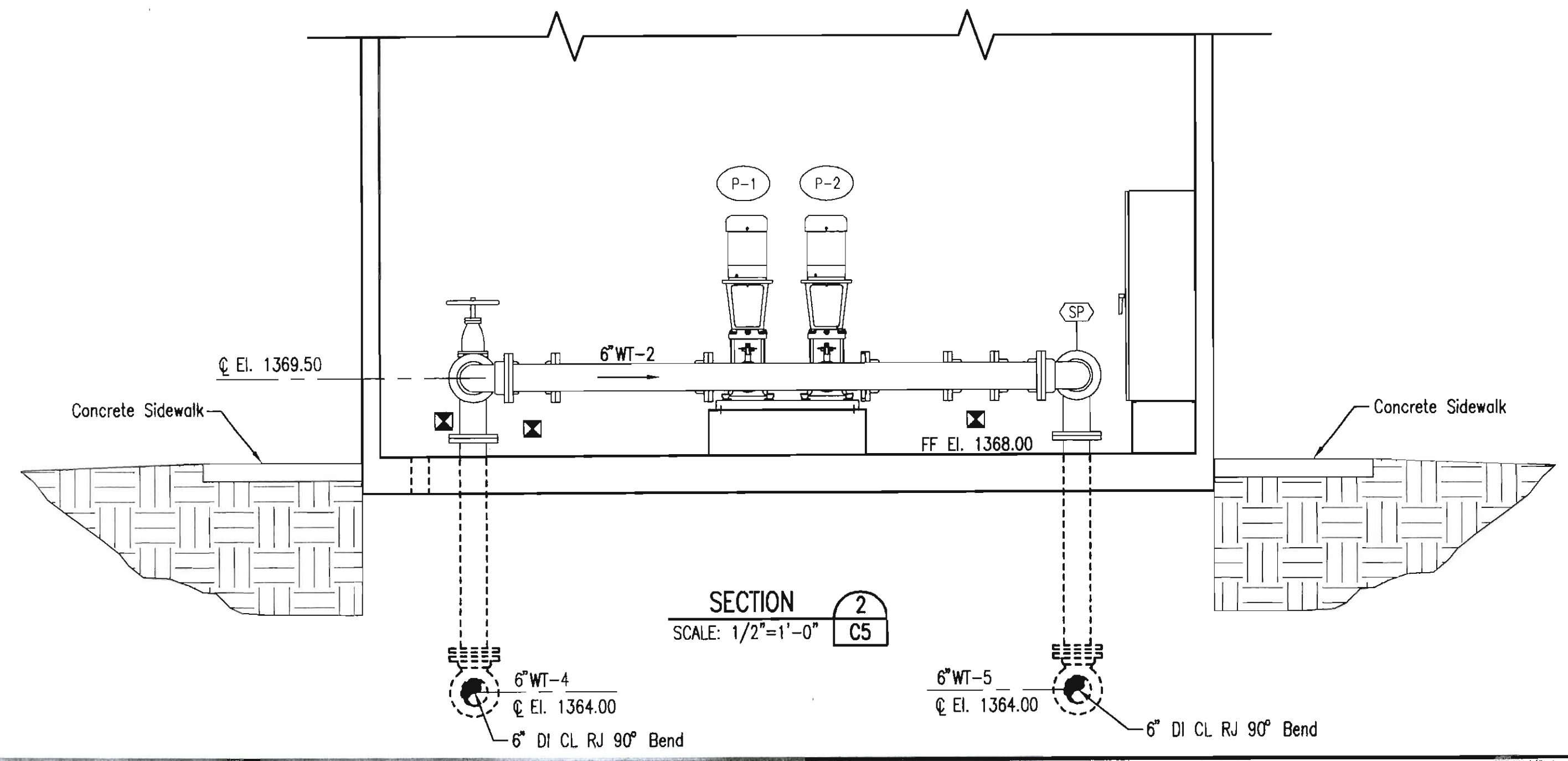


NOTE: THE PUMP PACKAGE HAS BEEN PRE-PURCHASED BY THE CITY OF BENTON. REFERENCE THE PROJECT SPECIFICATIONS FOR THE MATERIALS INCLUDED WITH THE PUMP PACKAGE.



**SECTION 1**  
SCALE: 1/2"=1'-0"

\* Contractor shall verify Concrete Pump Pad size with Pump Manufacturer.



**SECTION 2**  
SCALE: 1/2"=1'-0"

Indicates where piping or equipment needs to be adequately supported. Supports such as Wall Brackets, Clevis Hangers and Steel or Concrete supports shall be positioned to adequately support the pipe. The Contractor shall also install any additional pipe supports deemed necessary. The Contractor shall submit to the Engineer for approval the type of pipe support and proposed location(s) for installation.



No.	Revision	By	Date
CITY OF BENTON BUTLER COUNTY, KANSAS <b>MAIN BOOSTER PUMP STATION</b> PLAN AND SECTIONS MAIN BOOSTER PUMP STATION			
		PROFESSIONAL ENGINEERING CONSULTANTS, P.A. 303 SOUTH TOPEKA WICHITA, KS 67202 316-262-2691 www.pec1.com	
Designed by	MDK, JDG	Job No.	35-10093-1558
Drawn by	JAN	Date	September 2010
			Sht. 12 of 18

Saved 06-27-2011 11:43:10 AM by CSL  
 Plot Scale: 1/2"=1'-0" 12:04:31 PM by BARRY S. LINK  
 2:\001\10093\10093-C-BPS Plan and Sections