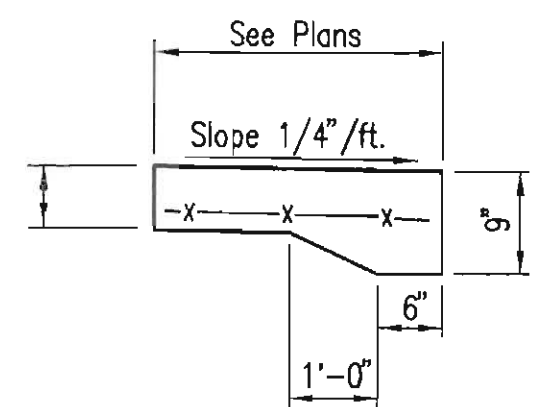
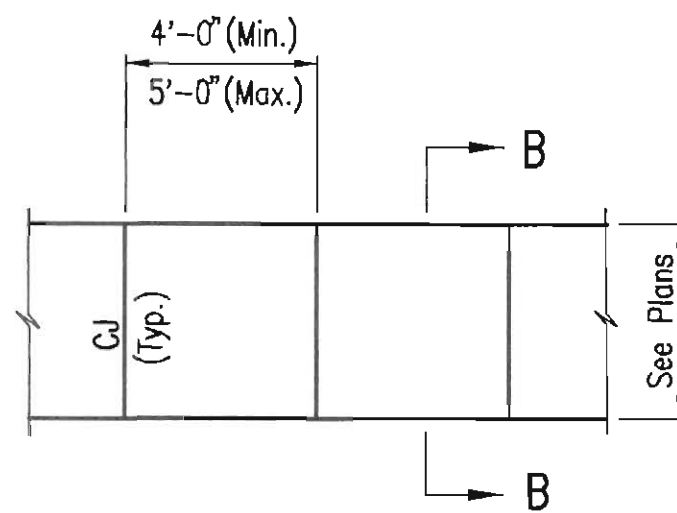


CONTRACTION JOINT (CJ)
 Note: No sawn contraction joints will be allowed



SECTION B-B

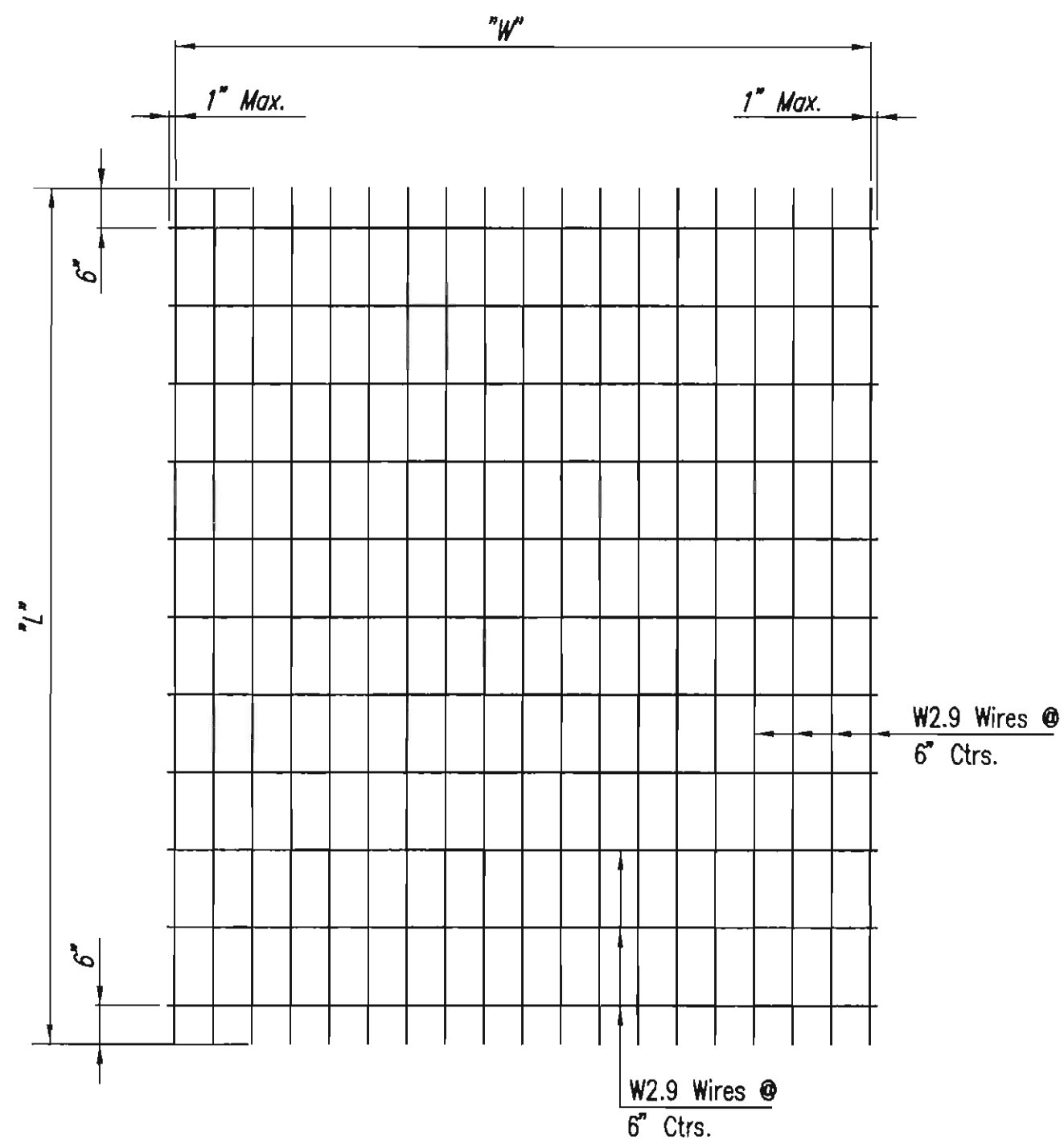
* Provide thickened edge at areas adjacent to drives and parking areas



PLAN

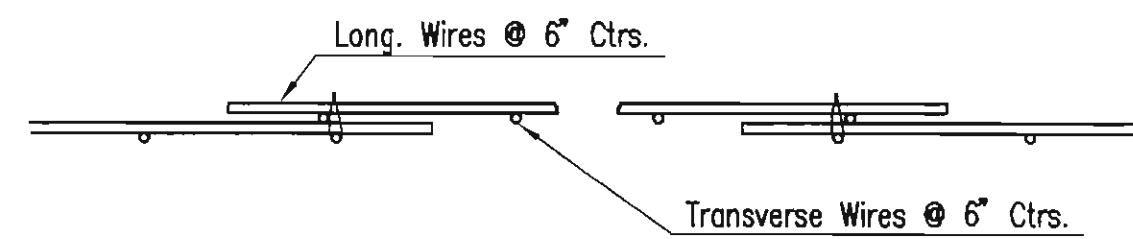
SIDEWALK DETAILS

Ref. Plans for Sidewalk Width.



TYPICAL SHEET OF WELDED WIRE MESH

*L = Panel length varies
 *W = Panel width varies



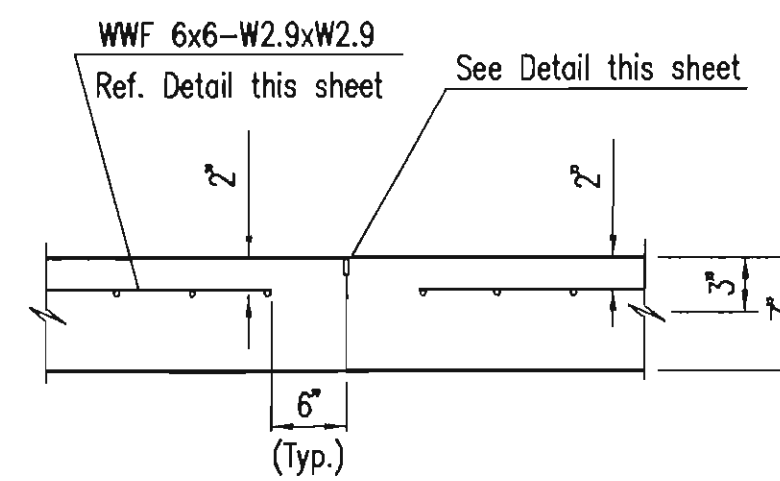
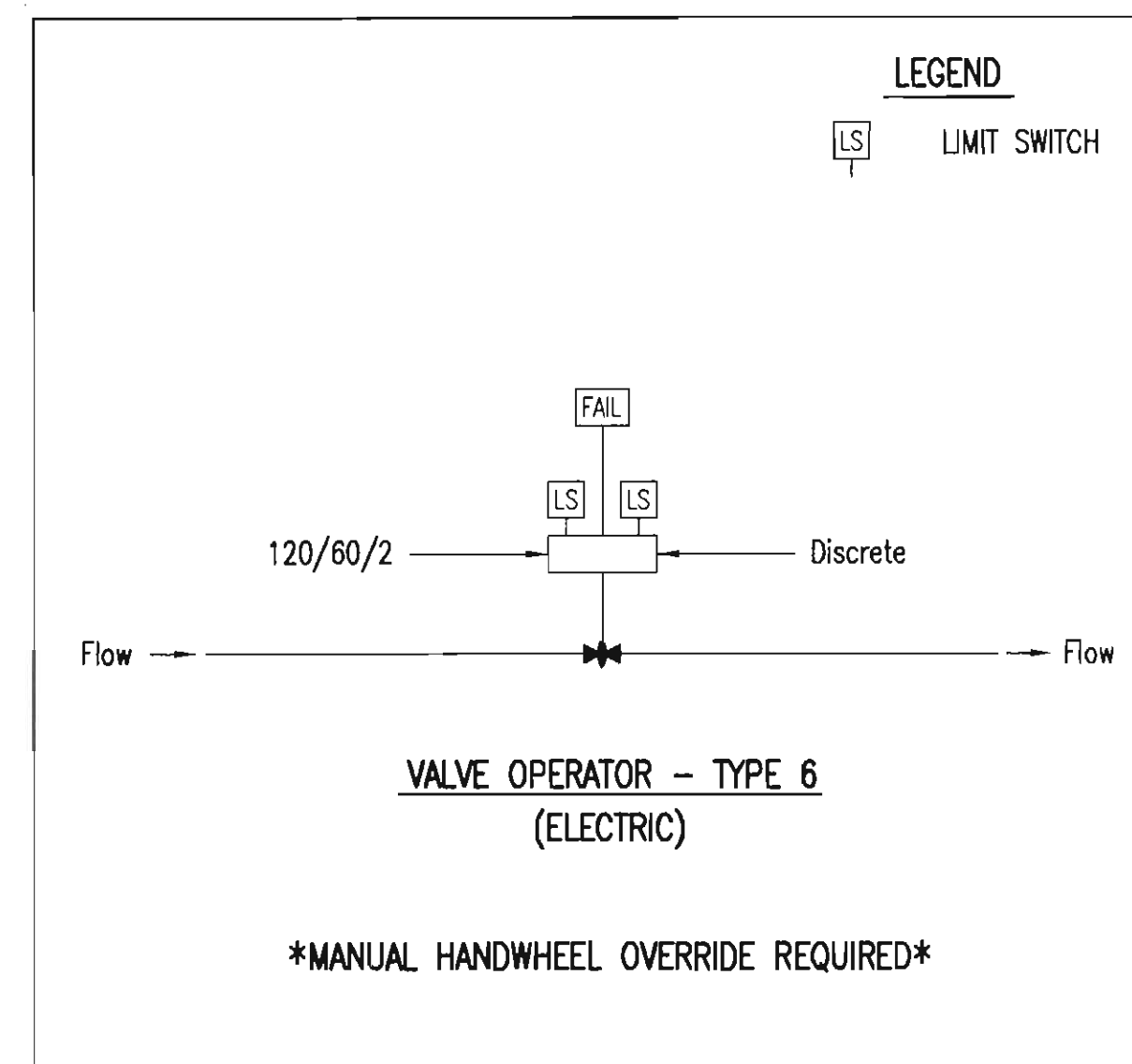
DETAIL OF LAP FOR WIRE MESH

NOTE: THE LAP SHALL EXTEND BEYOND THE FIRST TRANSVERSE WIRE OF EACH SHEET.

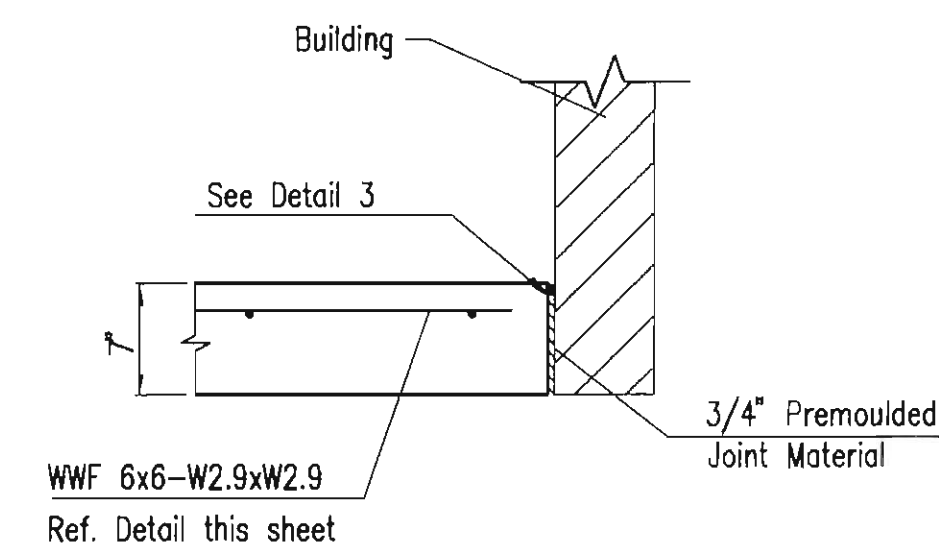
THE SHEETS SHALL BE WIRED SECURELY AT THE EDGES AND AT INTERVALS NOT TO EXCEED 2'-6" FOR THE FULL WIDTH OF THE SHEET. APPROX. WEIGHT OF WIRE MESH = 42 LBS. PER 100 SQ.FT.

OTHER METHODS FOR FASTENING THE SHEETS OF WIRE MESH AT THE LAPS MAY BE USED WITH THE APPROVAL OF THE ENGINEER.

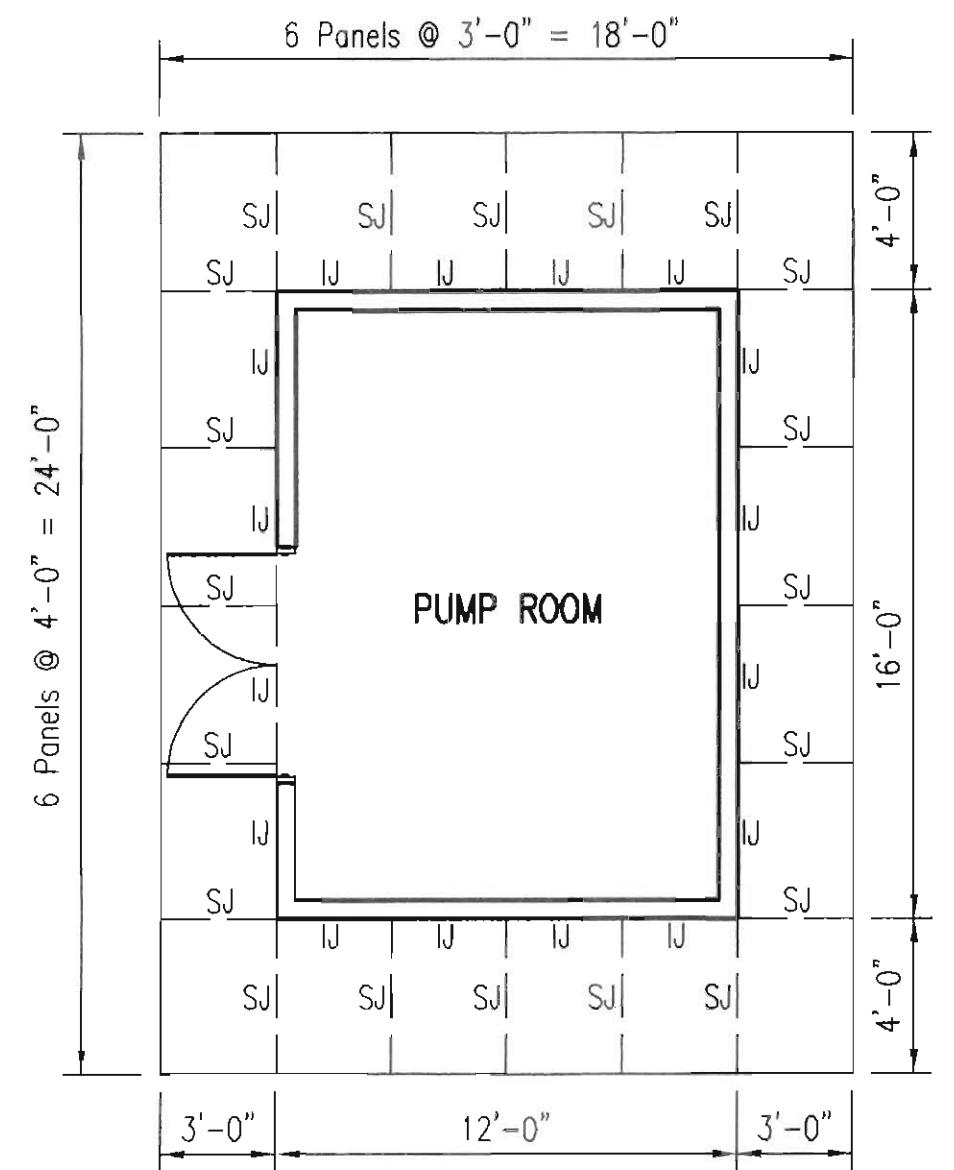
- 1 WIRE MESH TO BE USED IN VALLEY GUTTER AND IRREGULAR PANELS LABELED WITH AN "*" ON THE "JOINT PLAN".
- 2 #4X24" DEFORMED TIE BARS AT 30" CTRS TO USED IN CONSTRUCTION JOINT TYPE "E" AND SAW JOINT TYPE "F".
- 3 PLACE CUTTER PAN MONOLITHIC WITH ADJACENT PAVEMENT.
- 4 WELDED WIRE MESH MUST ALSO BE INSTALLED PER STRUCTURAL REQUIREMENTS LISTED ON SHEET S0.1.



SAW JOINT (SJ)

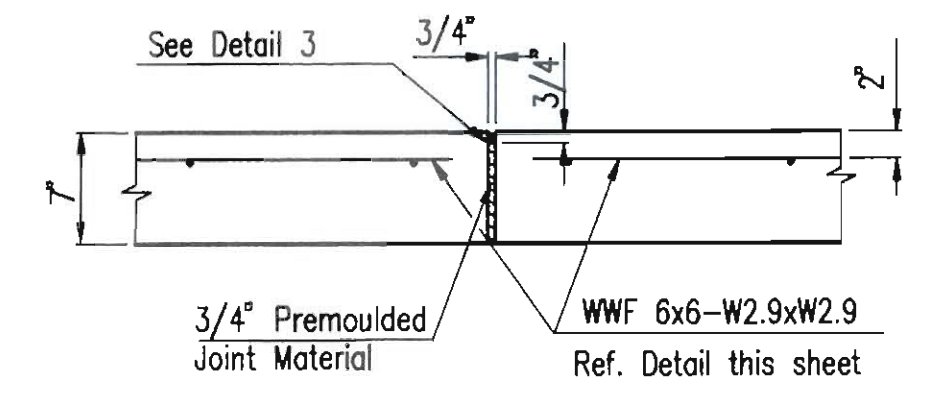


ISOLATION JOINT

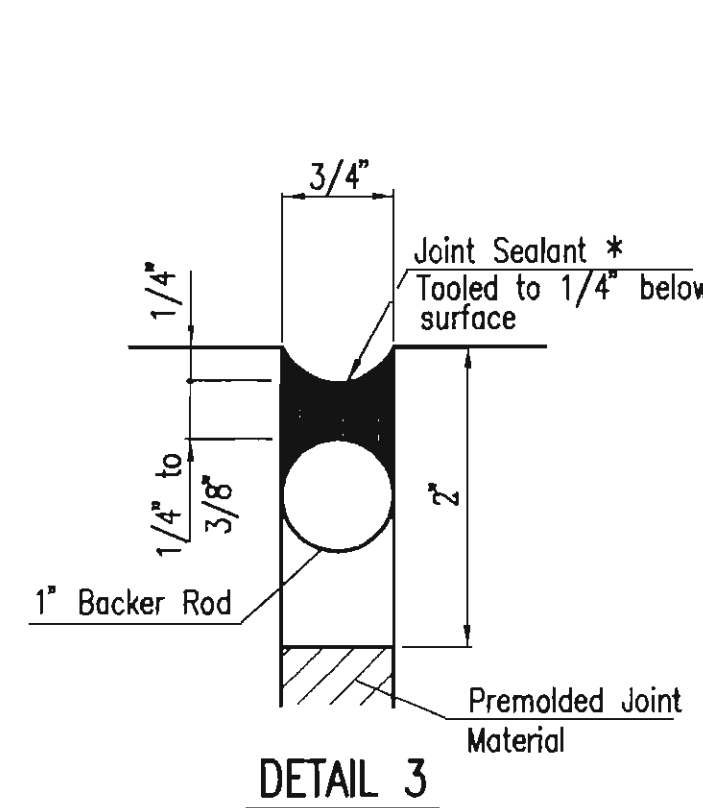


PAVEMENT JOINT PLAN

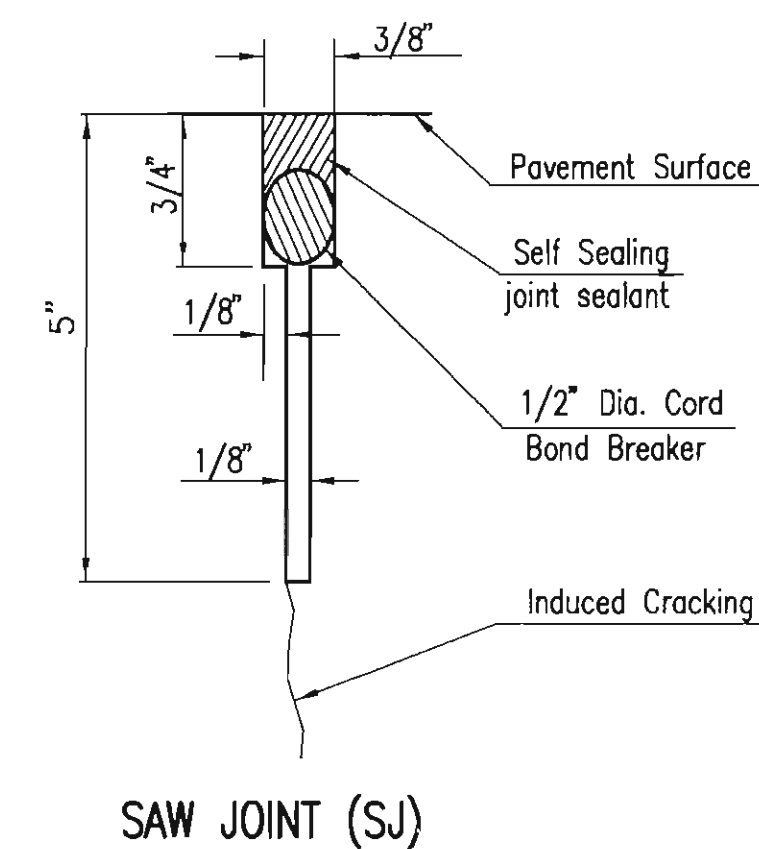
SCALE: 1" = 5'




ISOLATION JOINT (IJ)



DETAIL 3



SAW JOINT (SJ)

No.	Revision	By	Date
CITY OF BENTON BUTLER COUNTY, KANSAS MISCELLANEOUS DETAILS MAIN BOOSTER PUMP STATION			
 PEC PROFESSIONAL ENGINEERING CONSULTANTS, P.A. 303 SOUTH TOPEKA WICHITA, KS 67202 316-262-2691 www.pec1.com			
Designed by	MDK, CSL	Job No.	35-10093-1558
Drawn by	JAN	Date	September 2010
			Sht. 14 of 18