

PRIVATE STORM SEWER LINE PLANS

TO SERVE



AS BUILT PLANS

MARKET STORE #5856-00

CENTRAL AVENUE & WEST STREET
WICHITA, SEDGWICK COUNTY, KANSAS
CITY OF WICHITA PRIVATE PROJECT NO.

0008 PPD (607861) REV-6

2011

Contractor: Mies
Inspector: Don Eddingfield,
Baughman Co.
pdf's by: KEK, 8/26/11

OWNERS' ADDRESS

WAL-MART STORES, INC.
702 S.W. 8th STREET
BENTONVILLE, AR 72716
PH. (479) 273-4000

SHEET INDEX (PUBLIC)

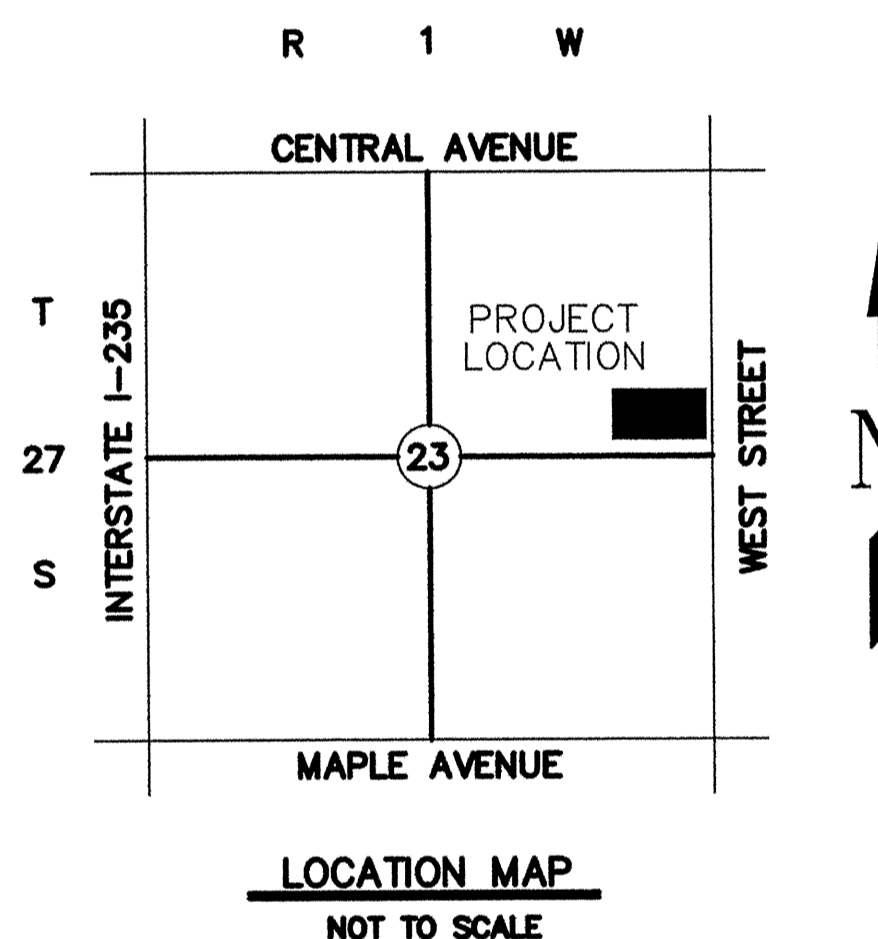
C-10.0	TITLE SHEET
C-10.1	STORM SEWER 'A' & 'B' PLAN & PROFILE
C-10.2	STORM SEWER 'C' PLAN & PROFILE
C-10.3	MISCELLANEOUS STORM SEWER DETAILS
C-10.4	STD TYPE I CURB INLET 5'-0" OR 10'-0" OPENING
REV-4 C-10.4.1	STD TYPE I CURB INLET 15'-0" OPENING
C-10.5	PRECAST CONCRETE MANHOLE (STORM SEWER)
C-10.6	MANHOLE/INLET FRAME AND COVER (STORM SEWER)
C-10.7	MANUFACTURE'S DETAILS & MODIFIED TYPE I CURB INLET W/ SWQ DEVICE

CITY RESOURCE LIST

CITY MANAGER CITY MANAGER'S OFFICE CITY OF WICHITA 455 N. MAIN - CITY HALL WICHITA, KS 67202 CONTACT: ROBERT LAYTON PH: (316) 268-4351 FAX: (316) 858-7712	CITY ENGINEER PUBLIC WORKS CITY OF WICHITA 455 N. MAIN - CITY HALL WICHITA, KS 67202 CONTACT: JIM ARMOUR PH: (316) 268-4266 FAX: (316) 268-4114	PLANNING / ZONING METROPOLITAN AREA PLANNING DEPARTMENT CITY OF WICHITA 455 N. MAIN - CITY HALL WICHITA, KANSAS 67202 CONTACT: BILL LONGNECKER PH: (316) 268-4494 FAX: (316) 268-4390	PUBLIC WORKS CITY OF WICHITA 455 N. MAIN - CITY HALL WICHITA, KANSAS 67202 CONTACT: STEVE KING PH: (316) 268-4288 FAX: (316) 268-4114
--	---	--	--

BENCH MARKS:

SITE BENCHMARK-1 "a" Chiseled on Top NW Cor. Conc. Furne Elevation=1308.39 (NAVD 88)	SITE BENCHMARK-1 "a" Chiseled on Top of Walk Elevation=1311.57 (NAVD 88)	SITE BENCHMARK-1 "a" Chiseled on Top Centerline of Median Elevation=1309.71 (NAVD 88)
---	---	--



APPROVED AS NOTED
By CITY ENGINEER OF WICHITA

Sanitary Sewers _____
Storm Sewers Julianne Kallman 3-17-11
Driveway Approaches _____
Water Mains _____

NOTE TO CONTRACTOR

INSPECTION AND TESTING FOR THIS PROJECT IS TO BE PROVIDED BY A LICENSED CONSULTING ENGINEERING FIRM UNDER CONTRACT WITH THE OWNER/DEVELOPER. SAID INSPECTION TO BE IN ACCORDANCE WITH THE CITY OF WICHITA STANDARD CONSTRUCTION ENGINEERING PRACTICES AND CERTIFIED BY A LICENSED PROFESSIONAL ENGINEER. NO WORK SHALL BE PERFORMED IN DEDICATED EASEMENTS OR THE PUBLIC RIGHT-OF-WAY BY THE CONTRACTOR WITHOUT SUCH INSPECTION NOR SHALL ANY WORK BE COMMENCED IN DEDICATED EASEMENT OR ANY RIGHT-OF-WAY WITHOUT WRITTEN AGREEMENT BY THE CITY ENGINEER.

I, Terence L. Haynes, Kansas Professional Engineer, #14583, do hereby state that these Private storm sewer line plans, prepared by me or under my direct, responsible supervision, are in strict conformance with the applicable Codes of the City of Wichita and the sound principles and practice of the Civil Engineering profession

Terence L. Haynes
TERENCE L. HAYNES/P.E. #14583

REVIEWED BY: _____

CITY ENGINEER _____ DATE: _____

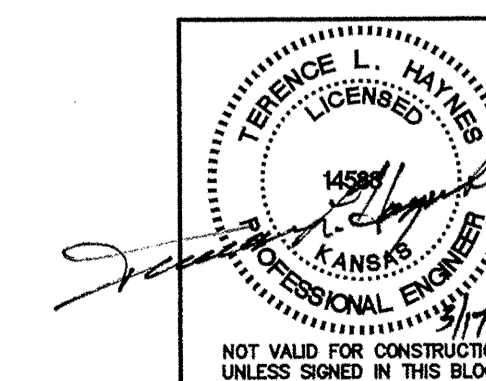
NOTE TO CONTRACTOR
CALL KANSAS ONE
1-800-522-6543
This number is to be used for information on the location of all underground utilities. Contact this number prior to any excavation.

- (1) An effort has been made to locate and show approximate location of underground utility lines. Buried utilities are not necessarily shown. It is the Contractors responsibility to locate and preserve all utility services.
- (2) Proposed utility services have been coordinated with the local utility companies. Contractor is responsible for contacting all utility companies prior to construction.
- (3) All quantity estimates shown in this set of plans are the Engineer's estimate and are provided for general information only! The contractor is solely responsible for calculating his/her own quantities!
- (4) Contractor shall acquire Licensing to work in City of Wichita, shall maintain Insurance Verification per Walmart and City's requirements and shall submit necessary bonds to satisfy City of Wichita's requirements.

ALERT TO CONTRACTOR:

1. THE SITEWORK FOR THE WALMART PORTION OF THIS PROJECT SHALL MEET OR EXCEED THE "SITE SPECIFIC SPECIFICATIONS."
2. ALL NECESSARY INSPECTIONS AND/OR CERTIFICATIONS REQUIRED BY CODES AND/OR UTILITY SERVICE COMPANIES SHALL BE PERFORMED PRIOR TO CONTRACT COMPLETION AND THE FINAL CONNECTION OF SERVICES.

SMC Consulting Engineers, P.C.
Oklahoma City, Oklahoma



TITLE SHEET			
PRIVATE STORM SEWER LINE PLANS			
WALMART MARKET #5856-00			
CENTRAL AVENUE & WEST STREET WICHITA, KANSAS			
SMC Consulting Engineers, P.C. 815 West Main - Oklahoma City, OK 73106 PH: 405-232-7715 Fax: 405-232-7859			
KANSAS CERTIFICATE OF AUTHORIZATION NO. E-335 EXP. Dec. 31, 2011			
No.	Revision	By	Date
2	Updated notes and added "ALERT" note	MDS	12/29/10
3	Updated sheet index	MDS	01/10/11
4	City SWQ review comments	MDS	02/22/11
5	New Project Number assigned by the City	MDS	03/01/11
6	New Project Number assigned by the City	TAP	03/17/11
DATE: 12/02/10		SCALE: NTS	SHEET NO. C-10.0
DRAWN BY: KST		PROJECT NO.: 4935.00	
ENGINEER: TERENCE L. HAYNES, P.E. #14583			