

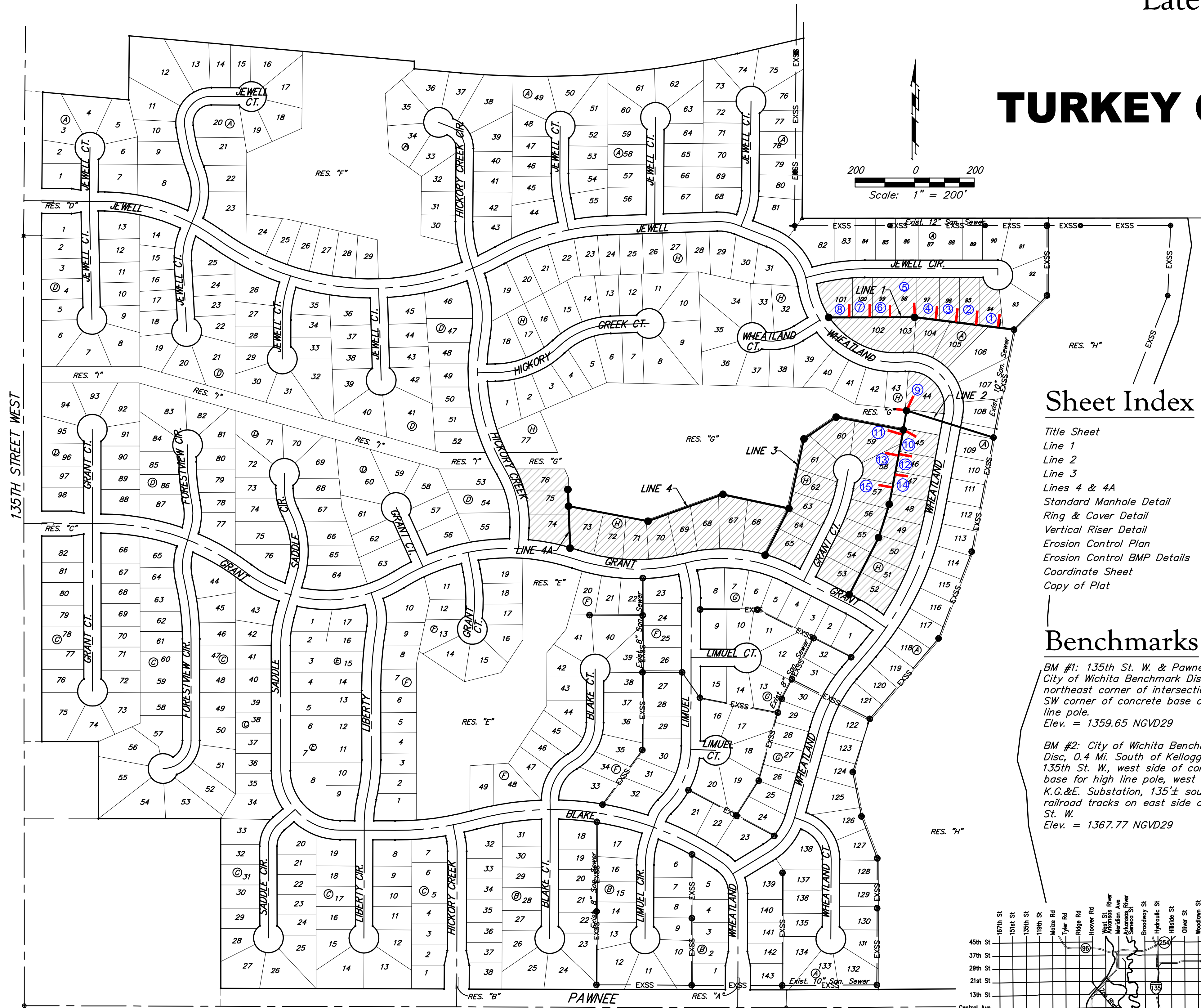
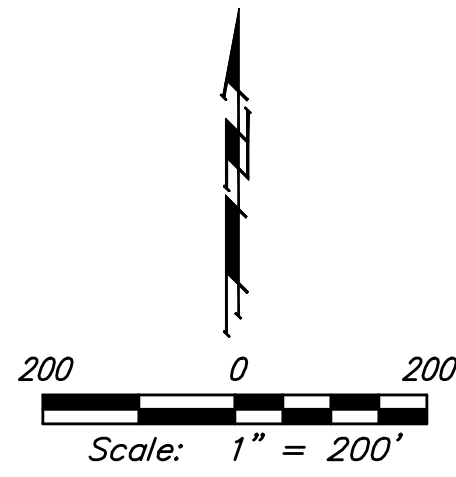
# Lateral 5, Main 6, Cowskin Interceptor Sewer Sanitary Sewer Improvements to serve **TURKEY CREEK 3RD ADDITION - PHASE II** CITY OF WICHITA, KANSAS

James L. Armour, P.E. City Engineer

Project Number  
468-84288

O.C.A. Number  
744320

Duling Construction - Contractor  
J. Terhune - City of Wichita, Field Project Engineer  
M. Sholander - City of Wichita, Inspector  
Stubs and Risers  
As-built  
Release Date: 10/01/2011  
pdf: APRosas 9/21/2011



## Sheet Index

Title Sheet	1
Line 1	2
Line 2	3-4
Line 3	5
Lines 4 & 4A	6
Standard Manhole Detail	7
Ring & Cover Detail	8
Vertical Riser Detail	9
Erosion Control Plan	10-11
Erosion Control BMP Details	12-15
Coordinate Sheet	16-17
Copy of Plat	18

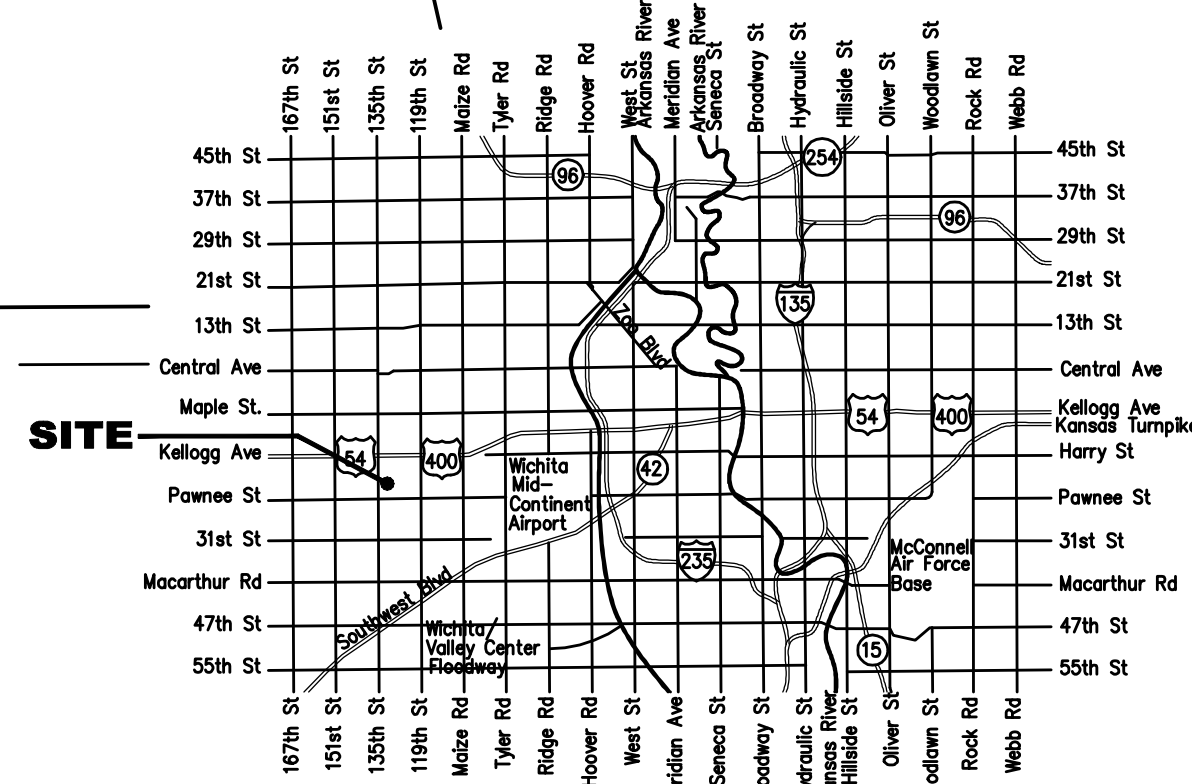
## Benchmarks

**BM #1:** 135th St. W. & Pawnee  
City of Wichita Benchmark Disc,  
northeast corner of intersection on  
SW corner of concrete base of high  
line pole.  
Elev. = 1359.65 NGVD29

**BM #2:** City of Wichita Benchmark  
Disc, 0.4 Mi. South of Kellogg on  
135th St. W., west side of concrete  
base for high line pole, west of  
K.G.&E. Substation, 135± south of  
railroad tracks on east side of 135th  
St. W.  
Elev. = 1367.77 NGVD29

## GENERAL NOTES:

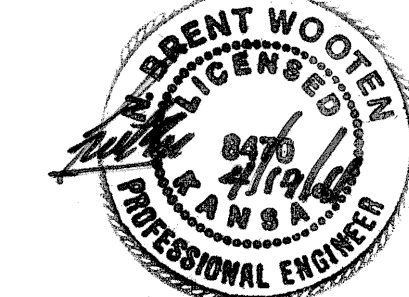
- Contractor will be required to provide notice to utility companies a minimum of forty-eight (48) hours prior to any excavation, as follows:  
**Kansas One—Call** 687-2470  
  
The Contractor must notify the following in case of an emergency:  
**Cox Communications** 262-4270  
**Kansas Gas Service** 1-888-482-4950  
**Westar Energy** 383-8650  
**Aquila Energy** 1-800-303-0357  
**ATT** 268-2245  
**City of Wichita Water Dept.** 268-4563  
**City of Wichita Sewer Maint.** 268-4024  
**City of Wichita Storm Sewer Maint.** 268-4034  
**City of Wichita Traffic Maint.** 268-4034  
**Conoco Phillips Pipeline Co.** 1-877-267-2290  
**Southern Star Pipeline Co.** 529-6600  
**Kinder-Morgan Pipeline Co.** 1-888-844-5658
- Utility service lines, poles, valve boxes, meters, and etcetera are to be adjusted as necessary by others prior to construction unless the plans specifically call for their adjustment by the Contractor or unless the plans specifically identify a utility to be adjusted by its owner during construction. Existing utilities and their location, as shown on the plans, represent the best information obtainable for design. The Contractor will be required to work around existing utilities within the right-of-way which do not conflict with proposed construction.
- Rubble from the removal of miscellaneous structures and excess excavation which is to be wasted shall be disposed of on sites to be provided by the Contractor. These sites shall be approved by the Engineer as to suitability, appearance and site location. Locations, in the opinion of the Engineer, that will leave an unsightly appearance will not be approved. All disposal sites must be approved by the Kansas Department of Health and Environment. Material either stockpiled or disposed of in a flood plain would require a Kansas State Board of Agriculture permit. Any material dumped in waters of the United States or wetlands is subject to U.S. Corps of Engineers permitting regulations. Any material buried or stockpiled beyond approved construction limits would require additional archaeological investigations unless buried in a previously approved borrow location.
- Trees and shrubs in public right-of-way which are in direct conflict with proposed new construction shall be removed by the Contractor with the Engineer's approval. Trees and shrubs which are not in direct conflict with proposed new construction shall be saved and protected from damage.
- The Contractor shall give all property owners and/or tenants of developed property abutting the construction of this project a minimum of ten (10) days notice prior to start of construction.
- The Contractor shall be responsible for preserving property irons. The Contractor will be required to re-establish any property irons which are damaged or destroyed by his construction operations. Such irons shall be re-established by a licensed land surveyor in accordance with state laws.
- All existing and proposed erosion control measures including silt fencing, erosion control mat, straw bales, inlet barriers, and const. entrance shall be maintained throughout construction by the contractor and until project is accepted by the City of Wichita. The on-site engineer shall complete weekly reports on the status of erosion control measures. The contractor shall be required to comply with maintenance and/or replacement of erosion control measures as determined by the on-site engineer until project is accepted by City of Wichita.
- The Contractor shall be responsible for maintaining continuous flow of sewage through construction. Contractor's proposed method for maintaining sewage flow shall be approved by the Engineer. Cost of maintaining flow of sewage through construction will not be paid for directly and this cost shall be considered as subsidiary to the other pay items of work.
- All areas disturbed during construction shall be seeded at 300 lbs./acre with Rye Grass immediately following construction in that area. Contractor shall prepare ground per City of Wichita Specifications. All costs associated with seeding shall be included in bid item "Project Seeding".
- Contractor of this project shall coordinate construction with Contractor of the Storm Water Drain project to facilitate construction of both projects.
- Excess excavation shall remain on site and be spread evenly on lots outside of easements and R/W's.
- The Developer for this project is Paul E. Kelsey and may be reached at (316) 722-1077.



Benefit District



Vicinity Map



Baughman Company, P.A. 315 Ella St. Wichita, KS 67211 P 316-262-7271 F 316-262-0145  
ENGINEERING | SURVEYING | PLANNING | LANDSCAPE ARCHITECTURE