

STORM WATER SEWER #661
TO SERVE
MONARCH LANDING THIRD ADDITION
PROJECT NO. 468-84771

THE CITY OF WICHITA, KANSAS
JAMES L. ARMOUR, CITY ENGINEER
OCA NO. 751504
SW2011-0053

GENERAL NOTES

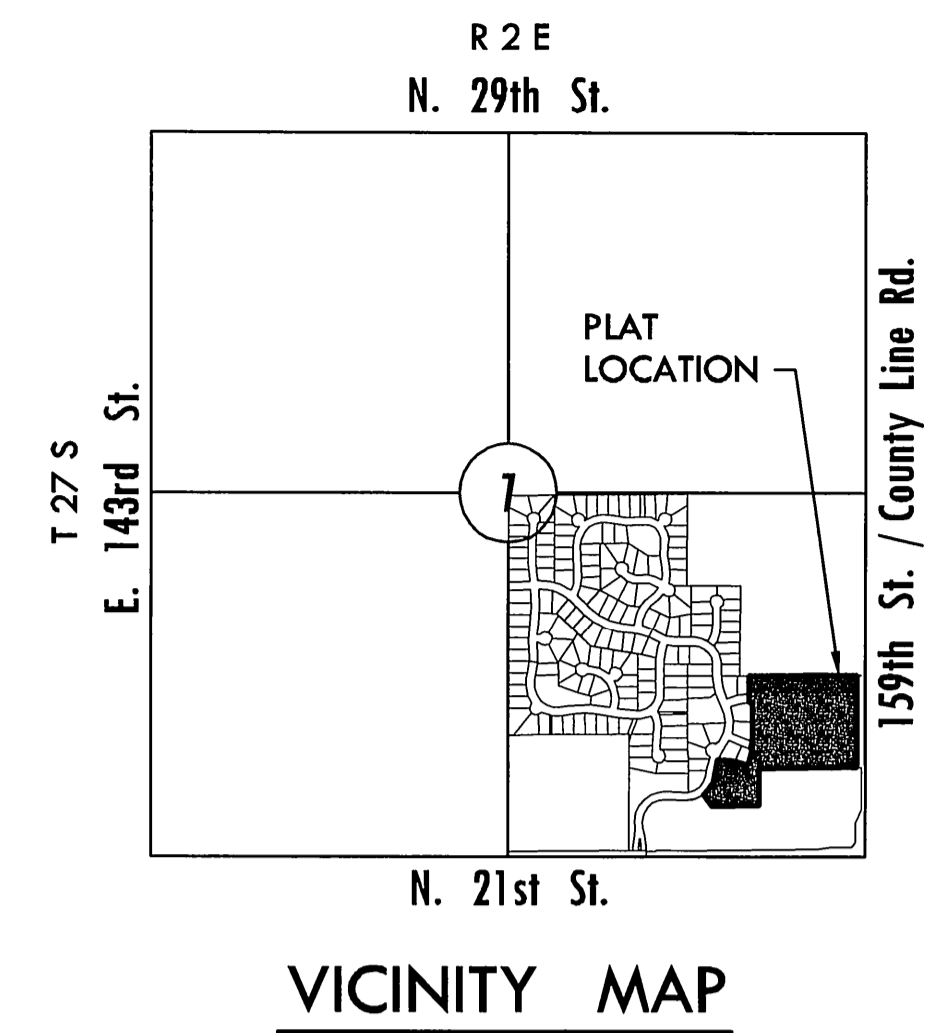
- UNLESS SHOWN OR OTHERWISE STATED ON THESE DRAWINGS, MATERIALS AND CONSTRUCTION SHALL BE IN ACCORDANCE WITH THE CITY OF WICHITA STANDARD SPECIFICATIONS.
- THE TOPS OF INLETS AND MANHOLES AS NOTED ON THE PLANS MAY VARY SO AS TO MEET PROPOSED TOP OF CURB ELEVATIONS OR PAVEMENT ELEVATIONS. THE FIELD ENGINEER SHALL LOCATE INLETS AND MANHOLES WITH REFERENCE TO PROPOSED PAVING PLANS OF THE PERTINENT STREETS.
- ALL CONCRETE SHALL BE STANDARD PAVING MIX UNLESS OTHERWISE NOTED.
- THE CONTRACTOR SHALL BE RESPONSIBLE FOR PRESERVING PROPERTY IRONS. THE CONTRACTOR SHALL BE REQUIRED TO RE-ESTABLISH ANY PROPERTY IRONS WHICH ARE DAMAGED OR DESTROYED BY HIS CONSTRUCTION OPERATIONS. SUCH IRONS SHALL BE RE-ESTABLISHED BY A LICENSED LAND SURVEYOR IN ACCORDANCE WITH STATE LAWS.
- TREES TO BE REMOVED ARE MARKED . ALL TREES WHICH IN THE OPINION OF THE FIELD ENGINEER CAN BE SAVED, SHALL BE SAVED.
- CONTRACTOR SHALL NOTIFY UTILITY COMPANIES OF CONSTRUCTION SCHEDULING.
- EXISTING UTILITIES AND THEIR LOCATIONS, AS SHOWN ON THE PLANS REPRESENT THE BEST INFORMATION OBTAINABLE FOR DESIGN. LOCATION INFORMATION HAS BEEN OBTAINED FROM THE VARIOUS COMPANIES AND IS EITHER FROM COMPANY UTILITY DRAWINGS OR COMPANY PROVIDED FIELD LOCATIONS. THE PLAN LOCATIONS SHOWN ARE NOT GUARANTEED. ADDITIONAL EXISTING UTILITIES MAY ALSO BE ENCOUNTERED.
- CONTRACTOR WILL BE REQUIRED TO PROVIDE A MINIMUM ADVANCE NOTICE OF SEVENTY-TWO (72) HOURS TO UTILITY COMPANIES TO STARTING ANY EXCAVATION AS FOLLOWS:

KANSAS ONE-CALL 800-344-7233
OR 687-2470 (LOCAL WICHITA)

THE CONTRACTOR MUST NOTIFY THE FOLLOWING IN CASE OF EMERGENCY:

COX COMMUNICATIONS (CABLE)	262-0661
WESTAR (ELECTRIC)	261-6512
KANSAS GAS SERVICE (GAS)	832-3101
SBC (TELEPHONE)	800-870-8390
CITY OF WICHITA WATER & SEWER	262-6000
BLACK HILLS ENERGY (GAS)	800-303-0357

- RUBBLE FROM THE REMOVAL OF MISCELLANEOUS STRUCTURES AND EXCESS EXCAVATION WHICH IS TO BE WASTED SHALL BE DISPOSED OF ON SITES TO BE PROVIDED BY THE CONTRACTOR. THESE SITES SHALL BE APPROVED BY THE ENGINEER AS TO SUITABILITY, APPEARANCE AND SITE LOCATION. LOCATIONS THAT, IN THE OPINION OF THE ENGINEER, WILL LEAVE AN UNSIGHTLY APPEARANCE WILL NOT BE APPROVED. ALL DISPOSAL SITES MUST BE APPROVED BY THE KANSAS DEPARTMENT OF HEALTH AND ENVIRONMENT. MATERIAL EITHER STOCKPILED OR DISPOSED OF IN A FLOOD PLAIN WOULD REQUIRE A KANSAS STATE BOARD OF AGRICULTURE PERMIT. ANY MATERIAL DUMPED IN WATERS OF THE UNITED STATES OR WETLANDS IS SUBJECT TO U.S. CORPS OF ENGINEERS PERMITTING REGULATIONS. ANY MATERIAL BURIED OR STOCKPILED BEYOND APPROVED CONSTRUCTION LIMITS WOULD REQUIRE ADDITIONAL ARCHAEOLOGICAL INVESTIGATIONS UNLESS BURIED IN A PREVIOUSLY APPROVED BORROW LOCATION.
- CONTRACTOR SHALL RESEED AND MULCH ALL DISTURBED AREAS. COST SHALL BE CONSIDERED SUBSIDIARY TO SITE RESTORATION.
- DEVELOPER FOR THIS PROJECT IS:
MONARCH LANDING, LLC
8100 E. 22nd ST.
BLDG. 1000
WICHITA, KANSAS, 67226
CONTACT - KEVIN MULLEN, PRESIDENT
316-684-7300R



INDEX TO DRAWINGS

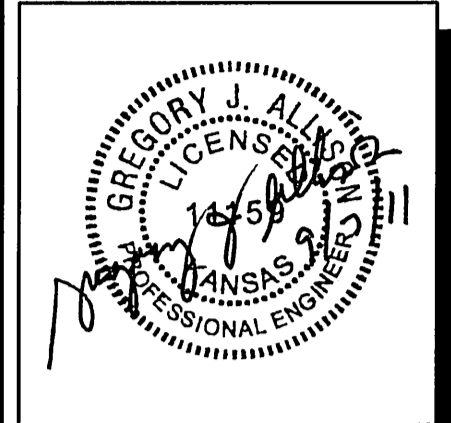
SHEET NO.	DESCRIPTION
1	TITLE SHEET
2-6	DETAILS
7-8	LINE 1
9	LINE 2
10	LINE 3
11	LINE 4 & 5
12	LINE 6
13	LINE 7
14	GRADING DETAILS
15	GRADING PLAN
16	LOT GRADING PLAN
17	PROJECT SEEDING GENERAL NOTES
18	EROSION CONTROL MAP
19	BUBBLE MAP
20-24	BMP DETAILS
25	FINAL PLAT

BENCHMARKS

- BM#1 CHISELED SQUARE ON TOP OF EAST CURB OF FLUTTER LANE AT SOUTHWEST CORNER OF MONARCH LANDING 3RD ADDITION, 463' +/- SSW OF CENTERLINE FLUTTER LANE AND CENTERLINE BOXTHORN. Elev. = 1371.11 NGVD 29
- BM#2 CHISELED SQUARE ON TOP OF SOUTH CURB OF BOXTHORN BETWEEN LOTS 1 AND 2, BLOCK 3, MONARCH LANDING ADDITION. Elev. = 1373.82 NGVD 29
- BM#3 TOP OF MKEC CAP IN SIDEWALK AT SOUTHEAST CORNER OF LOT 1, BLOCK 5, MONARCH LANDING ADDITION. Elev. = 1375.34 NGVD 29
- BM#4 CHISELED SQUARE ON TOP OF WEST CURB OF 159TH STREET EAST, 39.6' EAST AND 3.8' SOUTH OF NORTHEAST CORNER OF MONARCH LANDING 3RD ADDITION, EAST OF POWER POLE. Elev. = 1363.38 NGVD 29

NOTE:
THE CITY STANDARD DATUM NAVD 88 IS NOT USED IN THIS PROJECT.

MKEC
ENGINEERING
CONSULTANTS, INC.
411 N. WEBB ROAD
WICHITA, KS. 67206
316-684-9600



STORM WATER SEWER PLANS
MONARCH LANDING
THIRD ADDITION

TITLE SHEET
SHEET TITLE
468-84771
PROJECT NUMBER

DFL / DM / GJA
DESIGNED / DRAWN / CHECKED

ISSUED
August 2011

REVISED

SHEET NO.
1 of 25