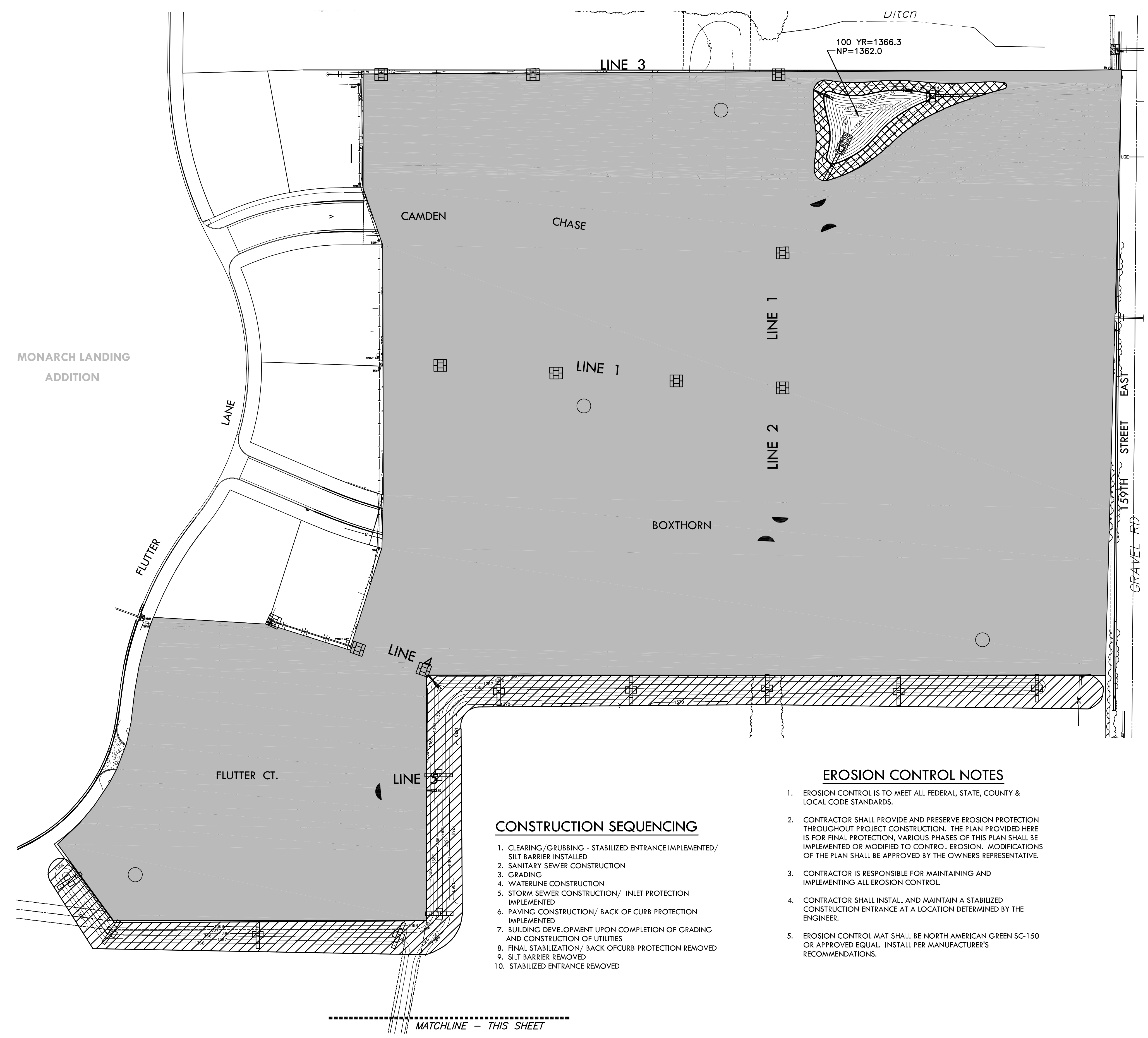


LEGEND

- EROSION CONTROL MAT (54.0 SY)
(SC250 NORTH AMERICAN GREEN)
- EROSION CONTROL MAT (776.7 SY)
(SC150 NORTH AMERICAN GREEN)
- ANNUAL RYE (15.1 AC.)
- NATIVE SEED (1.20 AC.)
- CURB INLET FILTER (5)
- TEMPORARY SWALE PROTECTION (12)
- TEMPORARY SWALE PROTECTION (12)
- PROPOSED STORM SEWER

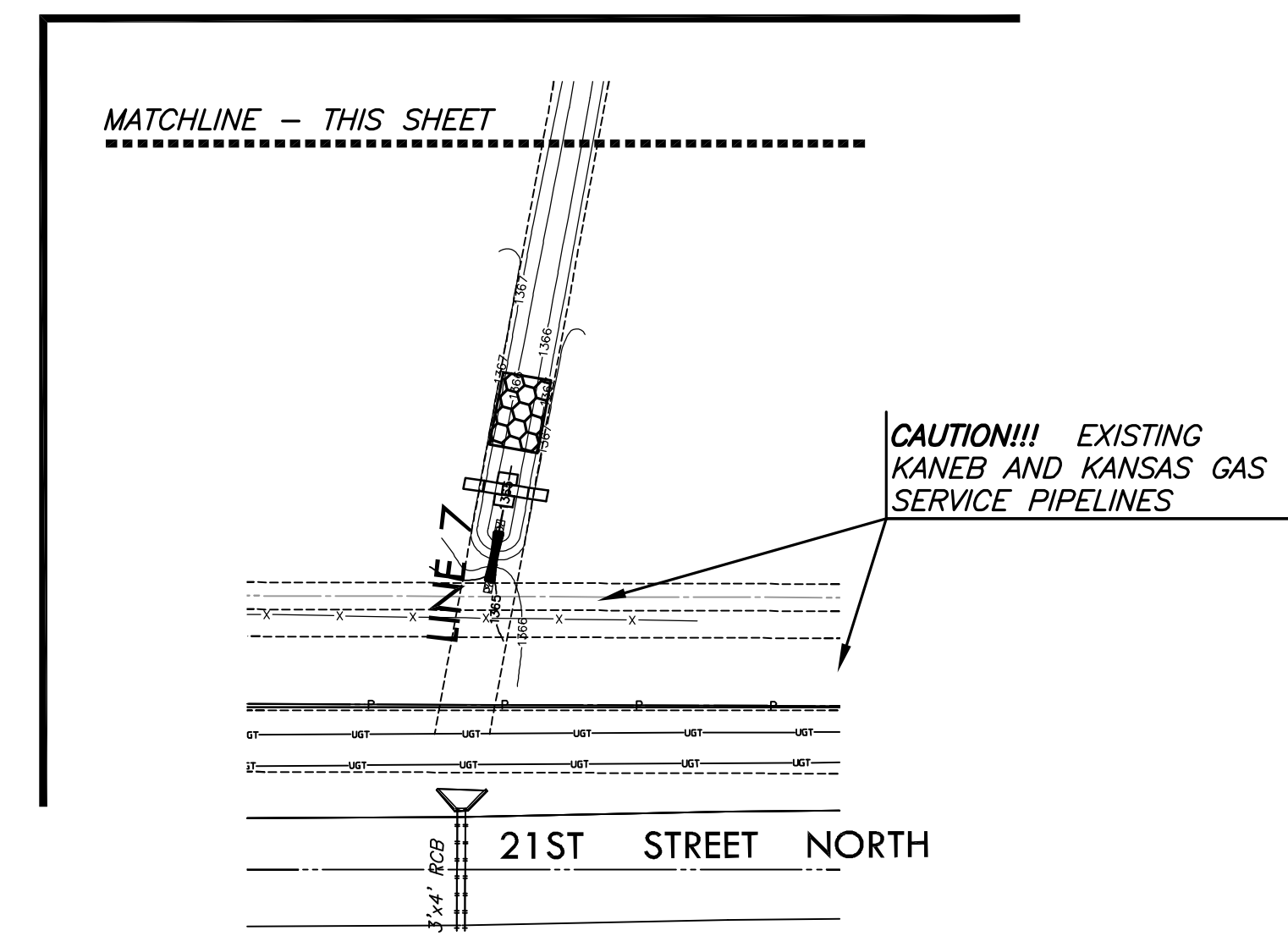


CONSTRUCTION SEQUENCING

1. CLEARING/GRUBBING - STABILIZED ENTRANCE IMPLEMENTED/ SILT BARRIER INSTALLED
2. SANITARY SEWER CONSTRUCTION
3. GRADING
4. WATERLINE CONSTRUCTION
5. STORM SEWER CONSTRUCTION/ INLET PROTECTION IMPLEMENTED
6. PAVING CONSTRUCTION/ BACK OF CURB PROTECTION IMPLEMENTED
7. BUILDING DEVELOPMENT UPON COMPLETION OF GRADING AND CONSTRUCTION OF UTILITIES
8. FINAL STABILIZATION/ BACK OF CURB PROTECTION REMOVED
9. SILT BARRIER REMOVED
10. STABILIZED ENTRANCE REMOVED

EROSION CONTROL NOTES

1. EROSION CONTROL IS TO MEET ALL FEDERAL, STATE, COUNTY & LOCAL CODE STANDARDS.
2. CONTRACTOR SHALL PROVIDE AND PRESERVE EROSION PROTECTION THROUGHOUT PROJECT CONSTRUCTION. THE PLAN PROVIDED HERE IS FOR FINAL PROTECTION, VARIOUS PHASES OF THIS PLAN SHALL BE IMPLEMENTED OR MODIFIED TO CONTROL EROSION. MODIFICATIONS OF THE PLAN SHALL BE APPROVED BY THE OWNERS REPRESENTATIVE.
3. CONTRACTOR IS RESPONSIBLE FOR MAINTAINING AND IMPLEMENTING ALL EROSION CONTROL.
4. CONTRACTOR SHALL INSTALL AND MAINTAIN A STABILIZED CONSTRUCTION ENTRANCE AT A LOCATION DETERMINED BY THE ENGINEER.
5. EROSION CONTROL MAT SHALL BE NORTH AMERICAN GREEN SC-150 OR APPROVED EQUAL. INSTALL PER MANUFACTURER'S RECOMMENDATIONS.



PLOTED: Tuesday, September 06, 2011 @ 04:27PM

STORM WATER SEWER PLANS
MONARCH LANDING
THIRD ADDITION

EROSION CONTROL
SHEET TITLE
468-84771
PROJECT NUMBER

DFL / DM / GJA
DESIGNED / DRAWN / CHECKED

ISSUED
August 2011

REVISED

SHEET NO.
18 of 25

J:\CIVIL\062011\DWG\SWS\THIRD_ADD\ERO_CONTROL_3.DWG