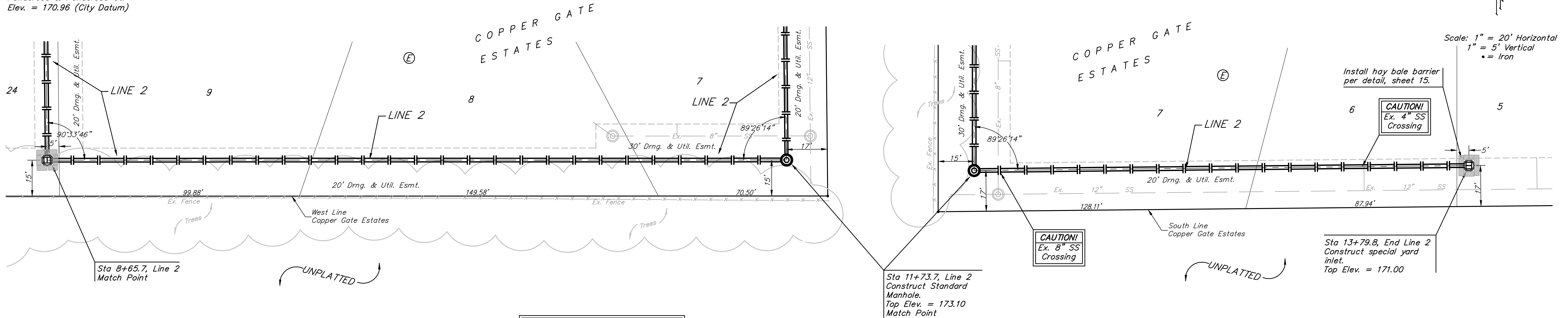
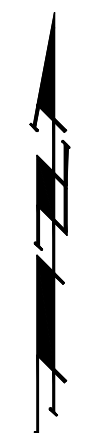
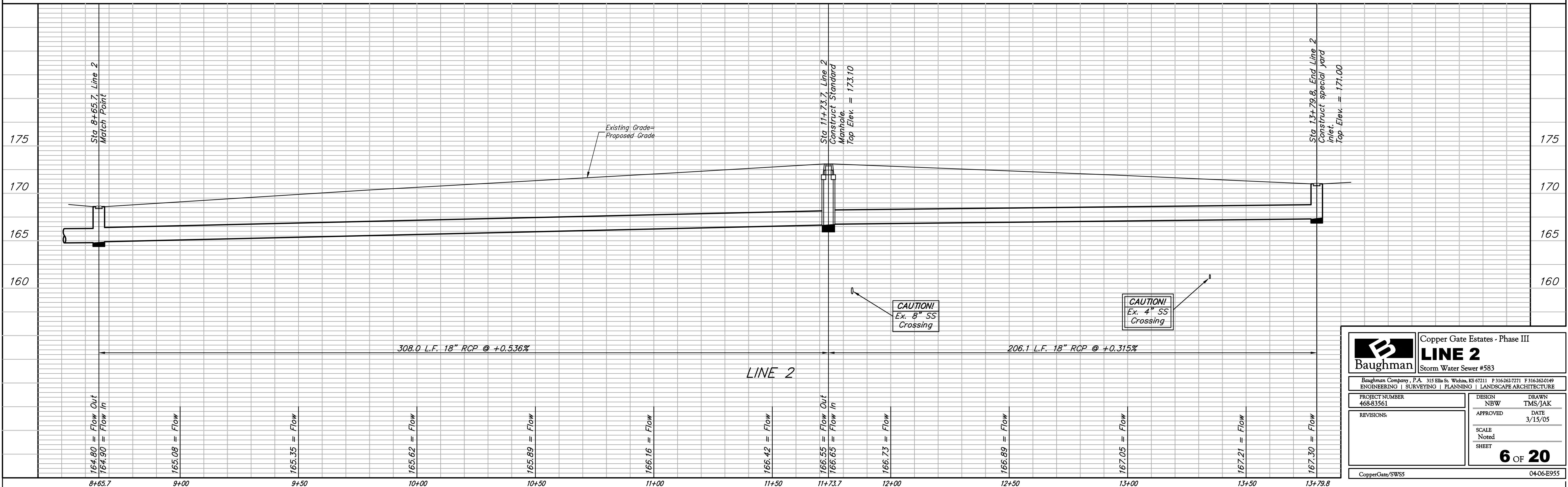


**BENCHMARK:**  
 City of Wichita benchmark at  
 the SE corner of intersection  
 of 135th Street West and 13th  
 Street North.  
 Elev. = 167.83 (City Datum)

Brass Benchmark Disc  
 Adjacent to Fire Hydrant at E.  
 End of E. Curb Return of  
 Ponderosa & Ponderosa Ct.  
 Elev. = 170.96 (City Datum)



Remove trees only as necessary for  
 storm water sewer construction.  
 Cost of removal to be incidental to  
 lump sum bid item "Site Clearing &  
 Restoration".



|  |               |                                 |  |
|--|---------------|---------------------------------|--|
|  |               | Copper Gate Estates - Phase III |  |
|  |               | <b>LINE 2</b>                   |  |
| Storm Water Sewer #583   |               |                                 |  |
| <small>Baughman Company, P.A. 315 Ellis St. Wichita, KS 67211 P 316-363-7271 F 316-363-0149<br/>         ENGINEERING   SURVEYING   PLANNING   LANDSCAPE ARCHITECTURE</small> |               |                                 |  |
| PROJECT NUMBER<br>468-83561  | DESIGN<br>NBW | DRAWN<br>TMS/JAK                |  |
| REVISIONS:   | APPROVED      | DATE<br>3/15/05                 |  |
| SCALE<br>Noted   |               | SHEET<br><b>6 OF 20</b>         |  |
| CopperGate/SWSS  |               | 04-06-B955                      |  |