

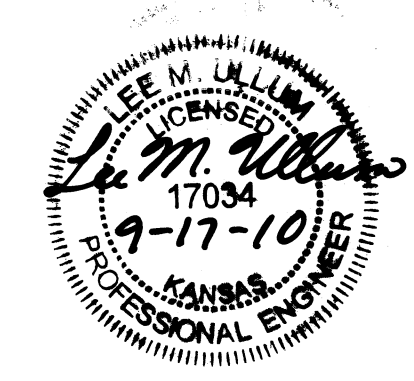
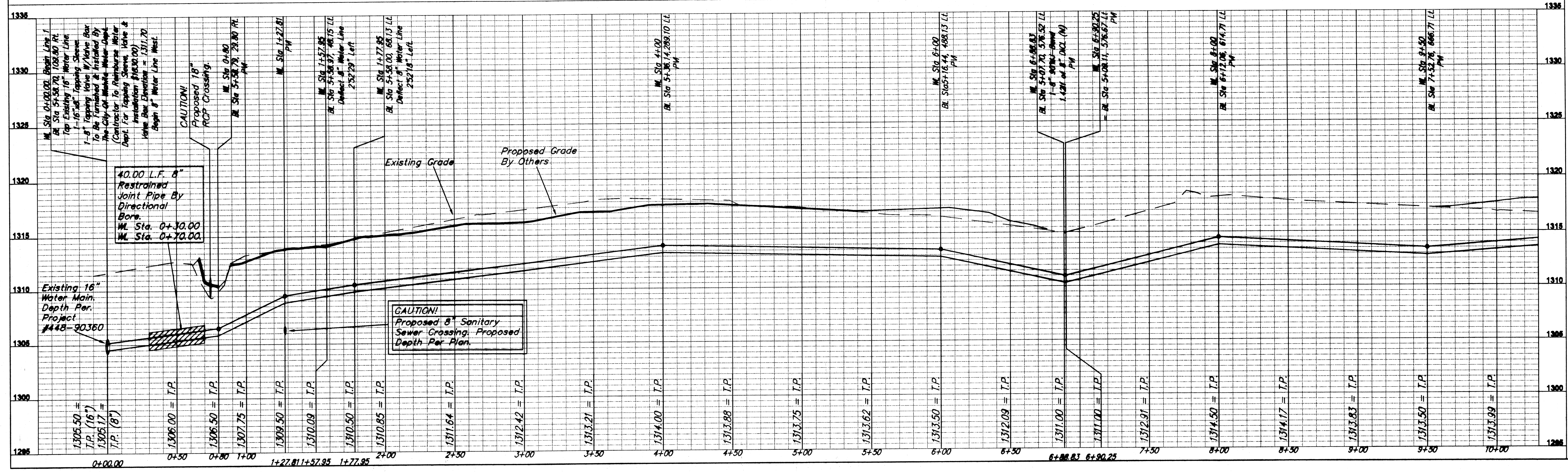
Contractor To Use Extreme Caution When Excavating Near Utility Lines. Contractor To Hand Dig To Expose All Utility Lines Prior To Construction. Verify Depth To Determine Conflict If Any.

Contractor Shall Follow All Applicable Best Management Practices (BMP) For Erosion Control.

NOTE: Contractor Shall Sand Backfill, Flush, & Vibrate Water Lines When Pipe Is Under Pavement.

Contractor Shall Follow All Applicable Best Management Practices (BMP) For Erosion Control.

Contractor To Use Extreme Caution When Excavating Near Utility Lines. Contractor To Hand Dig To Expose All Utility Lines Prior To Construction. Verify Depth To Determine Conflict If Any.



**Benchmarks**

Site Benchmark - 1:  
Railroad Spike in Power Pole.  
Elevation = 1313.69 (NAVD 88)

<b>Baughman</b>		<b>USD #259 Fifth Addition</b>	
<b>WATER LINE 1</b>		<b>Sta 0+00 to 10+00</b>	
Private Water Line Improvements			
Baughman Company, P.A. 315 Elm St. Wichita, KS 67211 P:316-263-7771 F:316-263-6149			
REGISTRATION: SURVEYING   PLANNING   LANDSCAPE ARCHITECTURE			
PROJECT NO: 1355 PFW (607853)	DESIGN: PSB	DATE: 9/2010	DRAWN: PSB/LLU
REVISIONS:	APPROVED: <i>[Signature]</i>	DATE:	
	SCALE: 1" = 40'		
	SHEET:		
			<b>3 OF 7</b>
E:\Project\USD 259 5th Addition\Engineering\ PFW.PFW 1004-E485			