



ARCHITECTURE
PLANNING
ENGINEERING
GRAPHICS

105 BROADWAY
4TH FLOOR
NASHVILLE, TN 37203
(p) 615.244.8170
(f) 615.244.8141
www.mjmarc.com



MICHAEL DUANE HUNKLER
REG.# 15263



CIVIL ENGINEER
GRESHAM
SMITH AND
PARTNERS

511 Union Street
1400 Nashville City Center
Nashville, Tennessee 37219
Phone: (615)770-8100
GSP #27761.22



GB REALTY CORPORATION
201 Summit Drive Suite 110
Brentwood, TN 37027
615-370-0870
Fax: 615-373-3111
www.gbirealty.com



STORE #:
**WICHITA,
KS AT
OAKLAWN**

07.22.10
MJM 10168

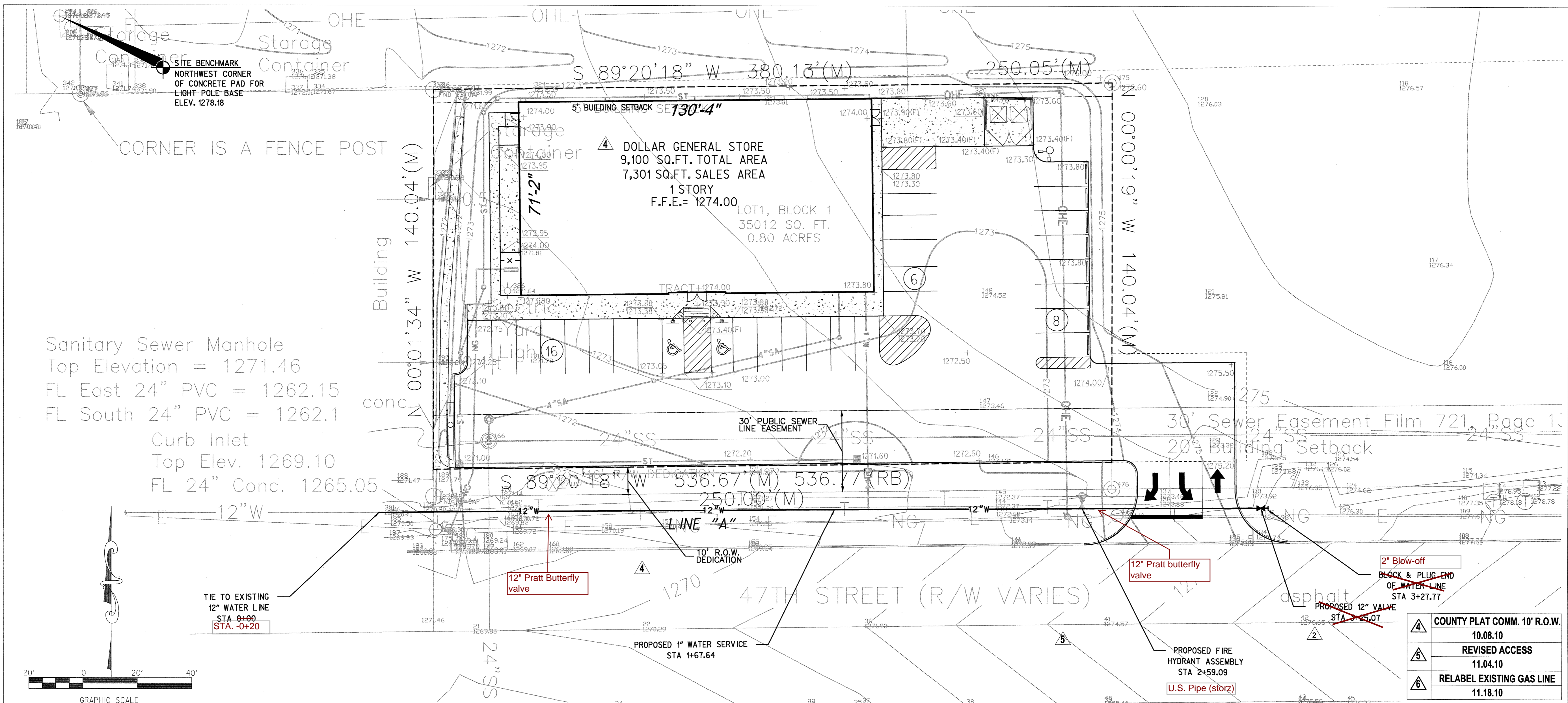
▲	PUBLIC WATER EXT.	09.22.10
▲	PUBLIC WATER EXT.	09.23.10
▲	PUBLIC WATER COMMENTS	09.28.10

This drawing and the design shown is the property of the architect. The reproduction, copying or use of this drawing without their written consent is prohibited and any infringement will be subject to legal action.

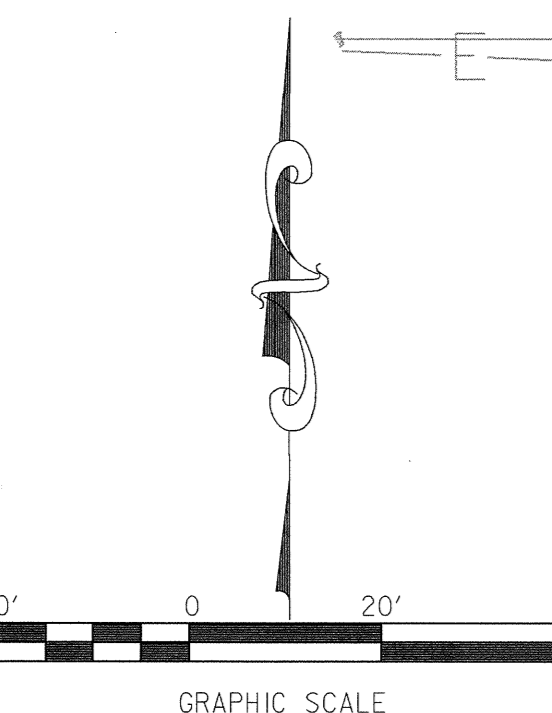
PRIVATE PROJECT WATER
PLAN & PROFILE

C6.2

ARCHITECTS
SEAL
CONSULTANT
OWNER
LOCATION
DATE
SHEET

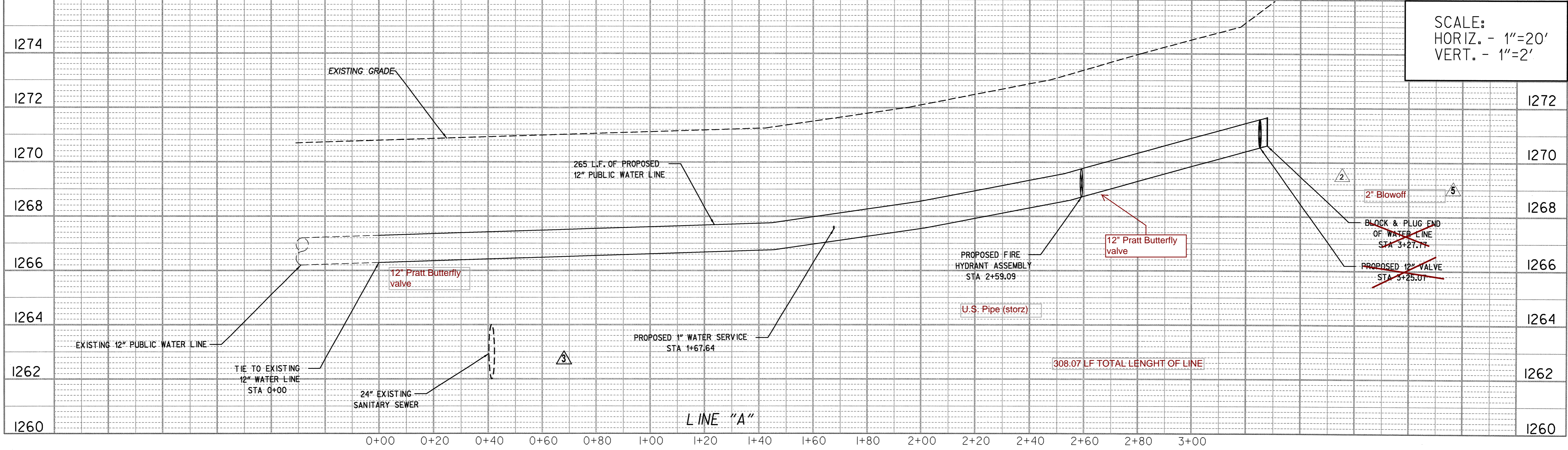


Sanitary Sewer Manhole
Top Elevation = 1271.46
FL East 24" PVC = 1262.15
FL South 24" PVC = 1262.1
Curb Inlet
Top Elev. 1269.10
FL 24" Conc. 1265.05



▲	COUNTY PLAT COMM. 10' R.O.W.	10.08.10
▲	REVISED ACCESS	11.04.10
▲	RELABEL EXISTING GAS LINE	11.18.10

SCALE:
HORIZ. - 1"=20'
VERT. - 1"=2'



▲