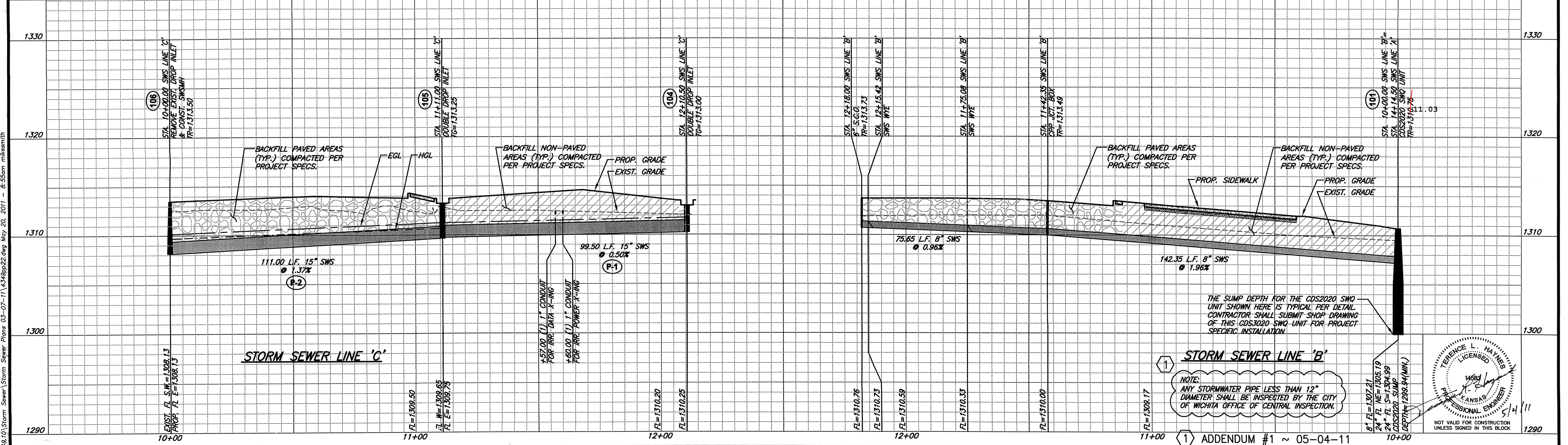
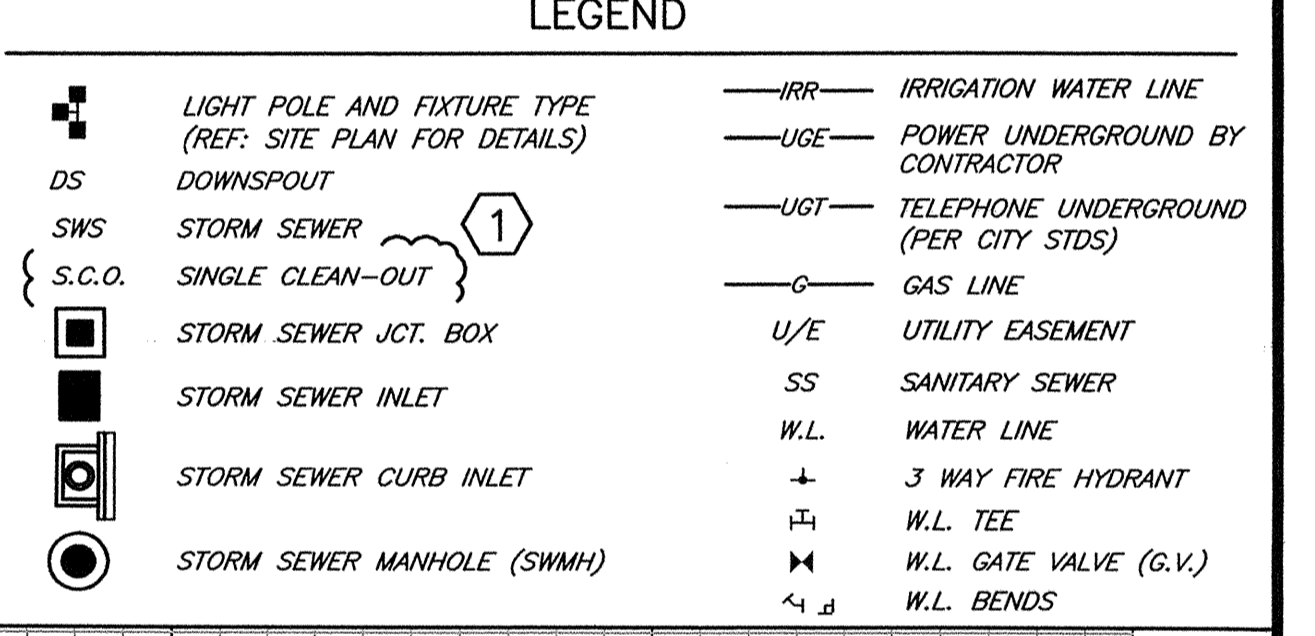
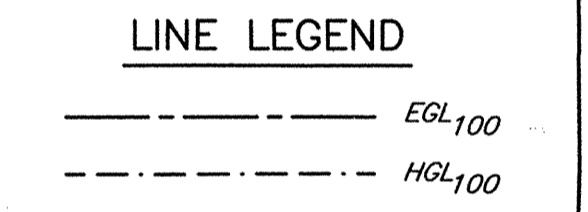


BEARING & STATIONING NOTE:
 ALL SEWER BEARINGS AND LINE DIMENSIONS ARE MEASURED TO THE CENTER OF JUNCTION BOXES AND MANHOLES UNLESS OTHERWISE INDICATED. THE CONTRACTOR SHALL MAKE ADJUSTMENTS IN PIPE CONNECTIONS AT JUNCTION BOXES AND MANHOLES AS NECESSARY TO ALLOW THE DESIGN TO BE BUILT.

NOTE: THE GENERAL CONTRACTOR IS RESPONSIBLE FOR MAKING ALL ADJUSTMENTS OF EXISTING UTILITIES TO ALLOW THE DESIGN TO BE BUILT.

CAUTION - NOTICE TO CONTRACTOR
 THE CONTRACTOR IS SPECIFICALLY CAUTIONED THAT THE LOCATION AND/OR ELEVATION OF EXISTING UTILITIES AS SHOWN ON THESE PLANS IS BASED ON RECORDS OF THE VARIOUS UTILITY COMPANIES AND, WHERE POSSIBLE, MEASUREMENTS TAKEN IN THE FIELD. THE INFORMATION IS NOT TO BE RELIED ON AS BEING EXACT OR COMPLETE. THE CONTRACTOR MUST CALL THE APPROPRIATE UTILITY COMPANY AT LEAST 48 HOURS BEFORE ANY EXCAVATION TO REQUEST EXACT FIELD LOCATION OF UTILITIES. IT SHALL BE THE RESPONSIBILITY OF THE CONTRACTOR TO RELOCATE ALL EXISTING UTILITIES WHICH CONFLICT WITH THE PROPOSED IMPROVEMENTS SHOWN ON THE PLANS.



NOTE:
 ANY STORMWATER PIPE LESS THAN 12" DIAMETER SHALL BE INSPECTED BY THE CITY OF WICHITA OFFICE OF CENTRAL INSPECTION.

