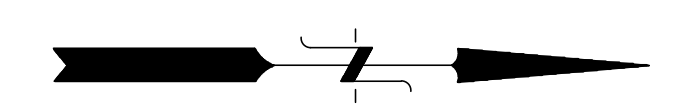
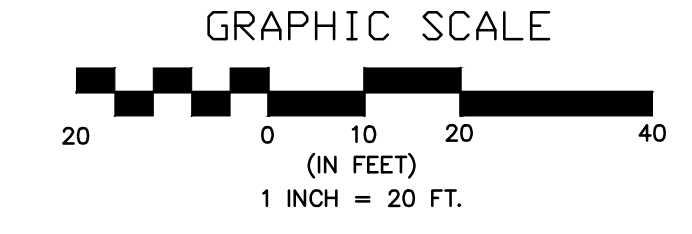


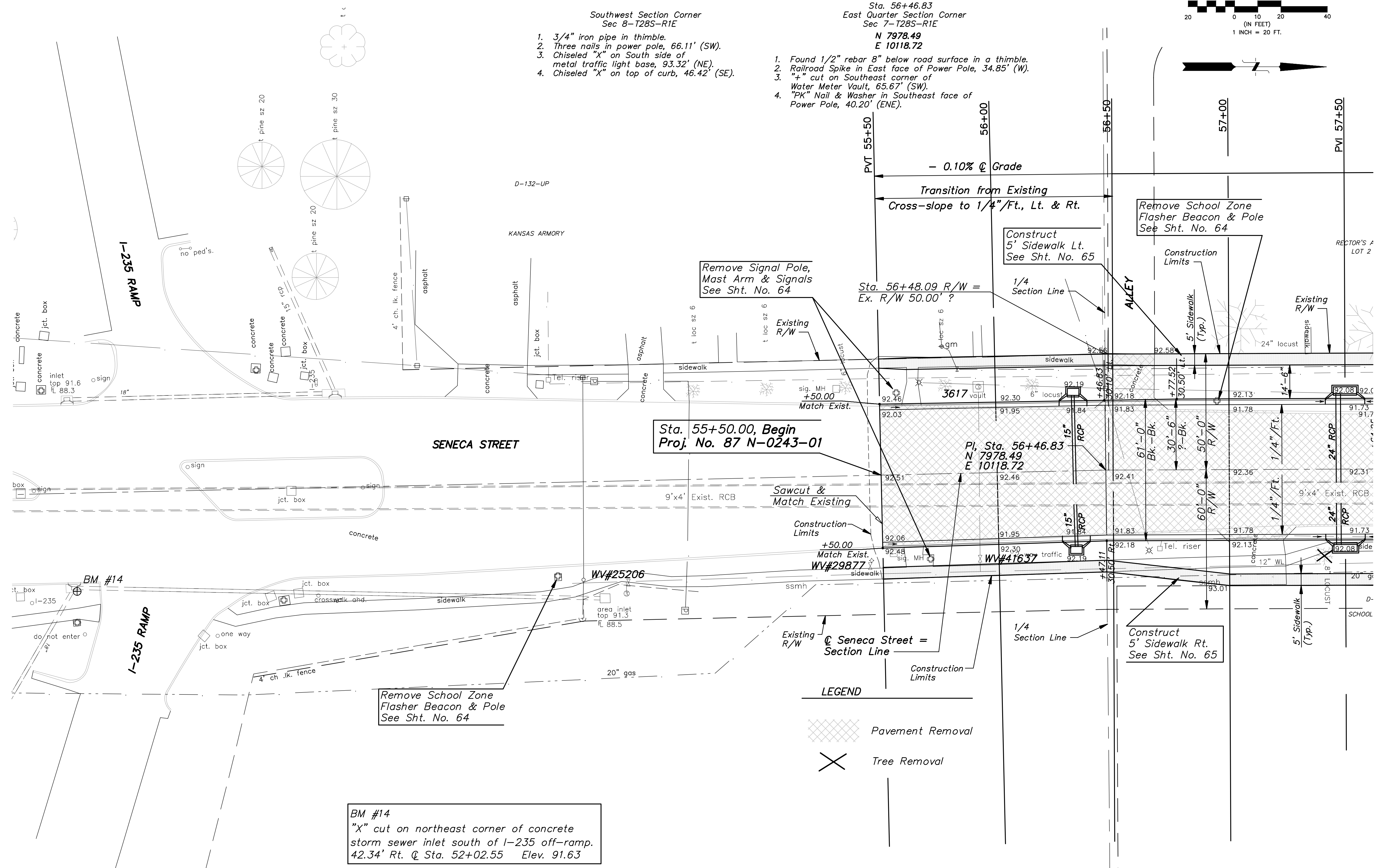
STATE	PROJECT NO.	YEAR	SHEET NO.	TOTAL SHEETS
KANSAS	87 N-0243-01	2005	7	169

Federal Aid No. STP N024(301)



- Southwest Section Corner
Sec 8-T28S-R1E
- 3/4" iron pipe in thimble.
 - Three nails in power pole, 66.11' (SW).
 - Chiseled "X" on South side of metal traffic light base, 93.32' (NE).
 - Chiseled "X" on top of curb, 46.42' (SE).

- Sta. 56+46.83
East Quarter Section Corner
Sec 7-T28S-R1E
N 7978.49
E 10118.72
- Found 1/2" rebar 8" below road surface in a thimble.
 - Railroad Spike in East face of Power Pole, 34.85' (W).
 - "+" cut on Southeast corner of Water Meter Vault, 65.67' (SW).
 - "PK" Nail & Washer in Southeast face of Power Pole, 40.20' (ENE).



Sta. 55+50.00, Begin
Proj. No. 87 N-0243-01

Sta. 56+48.09 R/W =
Ex. R/W 50.00' ?

Pl. Sta. 56+46.83
N 7978.49
E 10118.72

Remove School Zone
Flasher Beacon & Pole
See Sht. No. 64

BM #14
"X" cut on northeast corner of concrete
storm sewer inlet south of I-235 off-ramp.
42.34' Rt. Q Sta. 52+02.55 Elev. 91.63

LEGEND

- Pavement Removal
- Tree Removal

No.	Date	By	Approved	Revision
<p>SENECA STREET I-235 TO 31ST STREET CITY OF WICHITA, KANSAS STA. 55+50 TO STA. 57+50</p>				
<p>POE & ASSOCIATES, INC. CONSULTING ENGINEERS 5940 E. Central, Suite 200 □ Wichita, KS 67208-4242 Phone: 316/685-4114 □ FAX: 316/685-4444</p>				
<p>Engineer: P. FERGUSON Designer: J. UNRUH KDOT Job No.: 87 N-0243-01 Poe Job No.: 1794 Date: JANUARY 2010</p>				
<p>Sheet 7 of 169</p>				