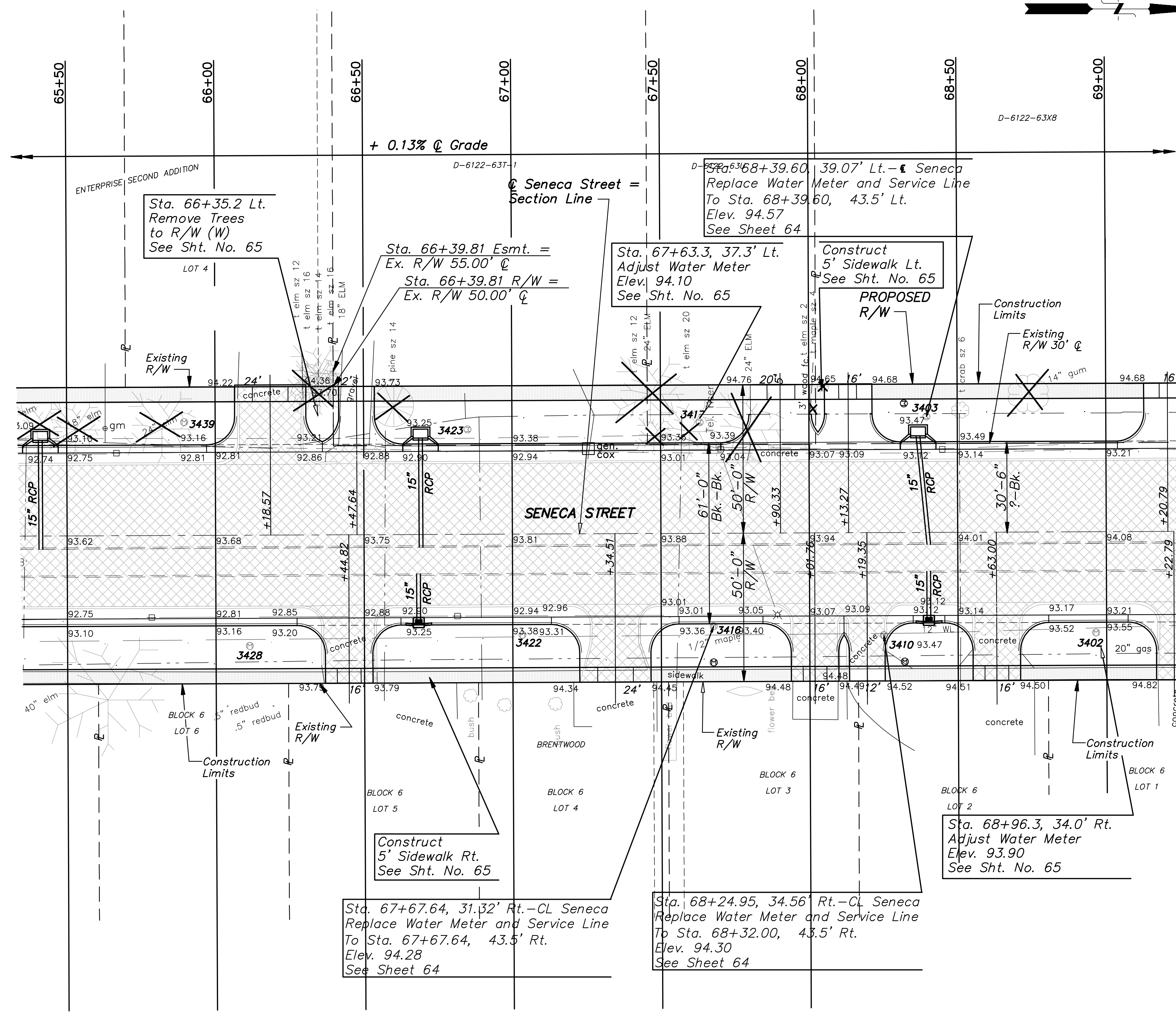


STATE	PROJECT NO.	YEAR	SHEET NO.	TOTAL SHEETS
KANSAS	87 N-0243-01	2005	10	169
Federal Aid No. STP N024(301)				



Sta. 67+67.64, 31.32' Rt. - CL Seneca  
Replace Water Meter and Service Line  
To Sta. 67+67.64, 43.5' Rt.  
Elev. 94.28  
See Sheet 64

Sta. 68+24.95, 34.56' Rt. - CL Seneca  
Replace Water Meter and Service Line  
To Sta. 68+32.00, 43.5' Rt.  
Elev. 94.30  
See Sheet 64

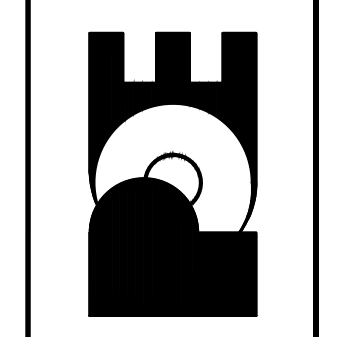
Sta. 68+96.3, 34.0' Rt.  
Adjust Water Meter  
Elev. 93.90  
See Sht. No. 65

Note:  
Construct 22.0 L.F. of Mono Edge Curb  
Between Driveways at Sta. 68+01.76 and  
Sta. 68+19.35. Taper from 6 5/8" at  
Back of Curb to 0" at Sidewalk.

No.	Date	By	Approved	Revision

SENECA STREET  
1-235 TO 31ST STREET  
CITY OF WICHITA, KANSAS  
STA. 66+00 TO STA. 69+00

POE & ASSOCIATES, INC.  
CONSULTING ENGINEERS  
5940 E. Central, Suite 200 □ Wichita, KS  
67208-4242  
Phone: 316/685-4114 □ FAX: 316/685-4444



Engineer: P. FERGUSON  
Designer: J. UNRUH  
KDOT Job No.: 87 N-0243-01 Poe Job No.: 1794  
Date: JANUARY 2010