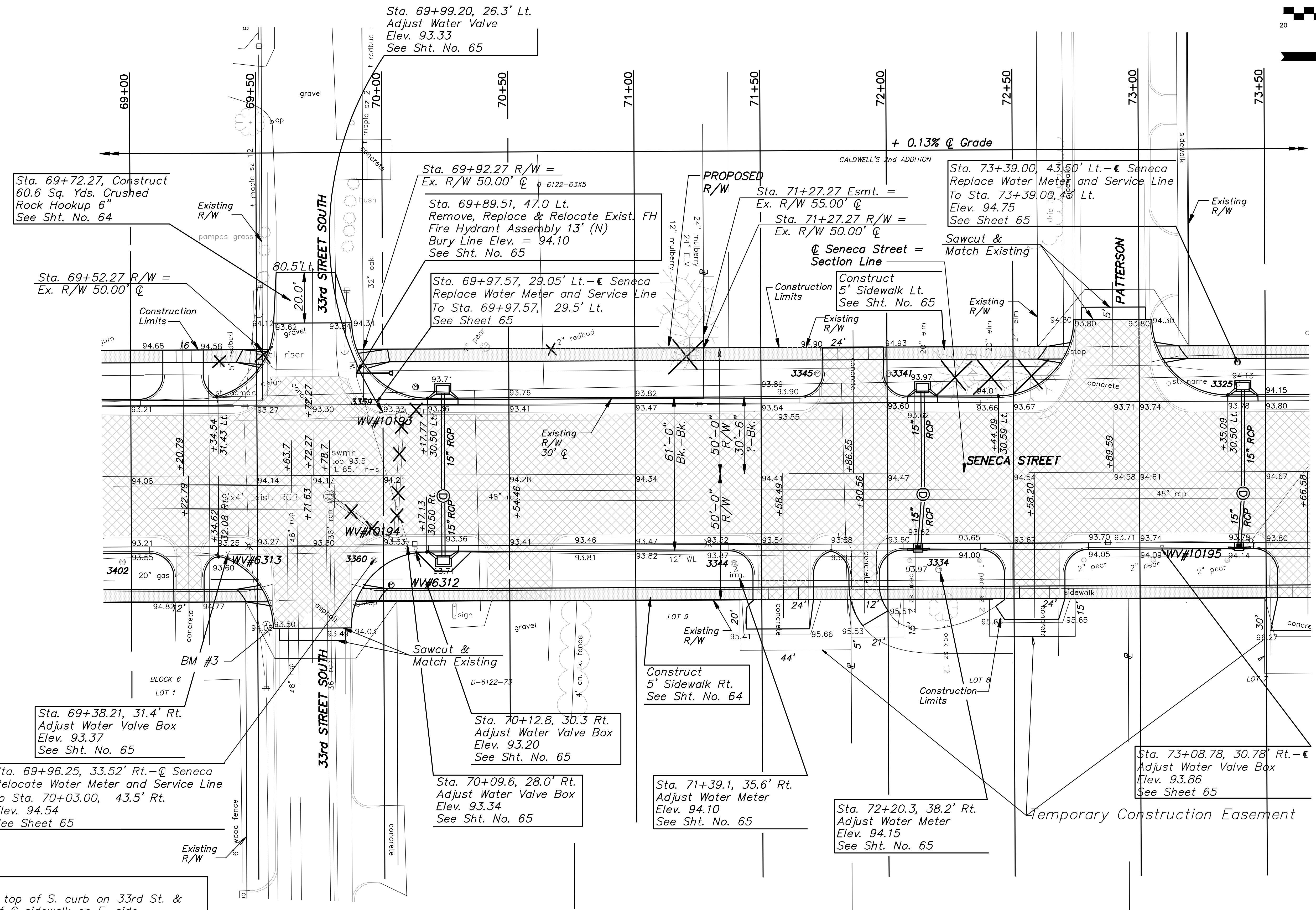
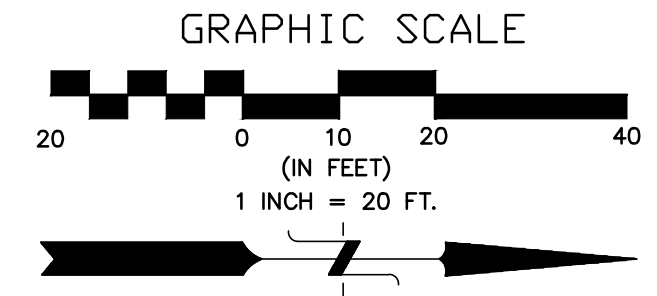


STATE	PROJECT NO.	YEAR	SHEET NO.	TOTAL SHEETS
KANSAS	87 N-0243-01	2005	11	169

Federal Aid No. STP N024(301)



Sta. 69+72.27, Construct  
60.6 Sq. Yds. Crushed  
Rock Hookup 6"  
See Sht. No. 64

Sta. 69+52.27 R/W =  
Ex. R/W 50.00' @

Sta. 69+99.20, 26.3' Lt.  
Adjust Water Valve  
Elev. 93.33  
See Sht. No. 65

Sta. 69+92.27 R/W =  
Ex. R/W 50.00' @  
Sta. 69+89.51, 47.0 Lt.  
Remove, Replace & Relocate Exist. FH  
Fire Hydrant Assembly 13' (N)  
Bury Line Elev. = 94.10  
See Sht. No. 65

Sta. 69+97.57, 29.05' Lt. - Seneca  
Replace Water Meter and Service Line  
To Sta. 69+97.57, 29.5' Lt.  
See Sheet 65

Sta. 71+27.27 Esmt. =  
Ex. R/W 55.00' @  
Sta. 71+27.27 R/W =  
Ex. R/W 50.00' @  
@ Seneca Street =  
Section Line

Sta. 73+39.00, 43.50' Lt. - Seneca  
Replace Water Meter and Service Line  
To Sta. 73+39.00, 43.5' Lt.  
Elev. 94.75  
See Sheet 65

Sawcut &  
Match Existing

Construct  
5' Sidewalk Lt.  
See Sht. No. 65

Sta. 69+38.21, 31.4' Rt.  
Adjust Water Valve Box  
Elev. 93.37  
See Sht. No. 65

Sta. 69+96.25, 33.52' Rt. - Seneca  
Relocate Water Meter and Service Line  
To Sta. 70+03.00, 43.5' Rt.  
Elev. 94.54  
See Sheet 65

Sta. 70+12.8, 30.3 Rt.  
Adjust Water Valve Box  
Elev. 93.20  
See Sht. No. 65

Sta. 70+09.6, 28.0' Rt.  
Adjust Water Valve Box  
Elev. 93.34  
See Sht. No. 65

Construct  
5' Sidewalk Rt.  
See Sht. No. 64

Sta. 71+39.1, 35.6' Rt.  
Adjust Water Meter  
Elev. 94.10  
See Sht. No. 65

Sta. 72+20.3, 38.2' Rt.  
Adjust Water Meter  
Elev. 94.15  
See Sht. No. 65

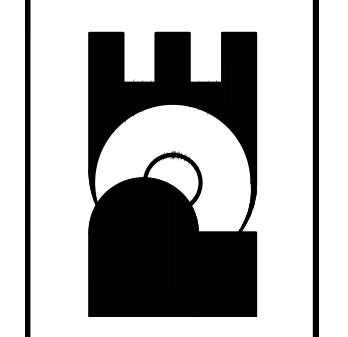
Sta. 73+08.78, 30.78' Rt. - Seneca  
Adjust Water Valve Box  
Elev. 93.86  
See Sheet 65

BM #3:  
"□" on top of S. curb on 33rd St. &  
12' E. of @ sidewalk on E. side  
of Seneca Street.  
North 9,288.22 East 10,173.14  
59.80' Rt. @ Sta. 69+56.33 Elev. 94.21

No.	Date	By	Approved	Revision

SENECA STREET  
1-235 TO 31ST STREET  
CITY OF WICHITA, KANSAS  
STA. 69+00 TO STA. 74+00

POE & ASSOCIATES, INC.  
CONSULTING ENGINEERS  
5940 E. Central, Suite 200 □ Wichita, KS  
67208-4242  
Phone: 316/685-4114 □ FAX: 316/685-4444



Engineer: P. FERGUSON  
Designer: J. UNRUH  
KDOT Job No.: 87 N-0243-01 Pce Job No.: 1794  
Date: JANUARY 2010