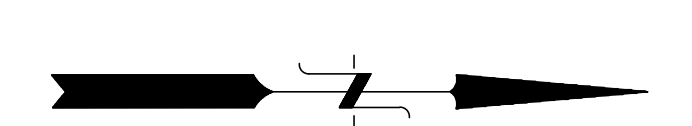
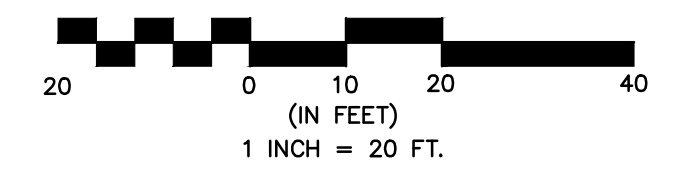


Sta. 82+95.26
 Northeast Section Corner N 10626.89
 Sec 7-T28S-R1E E 10107.83

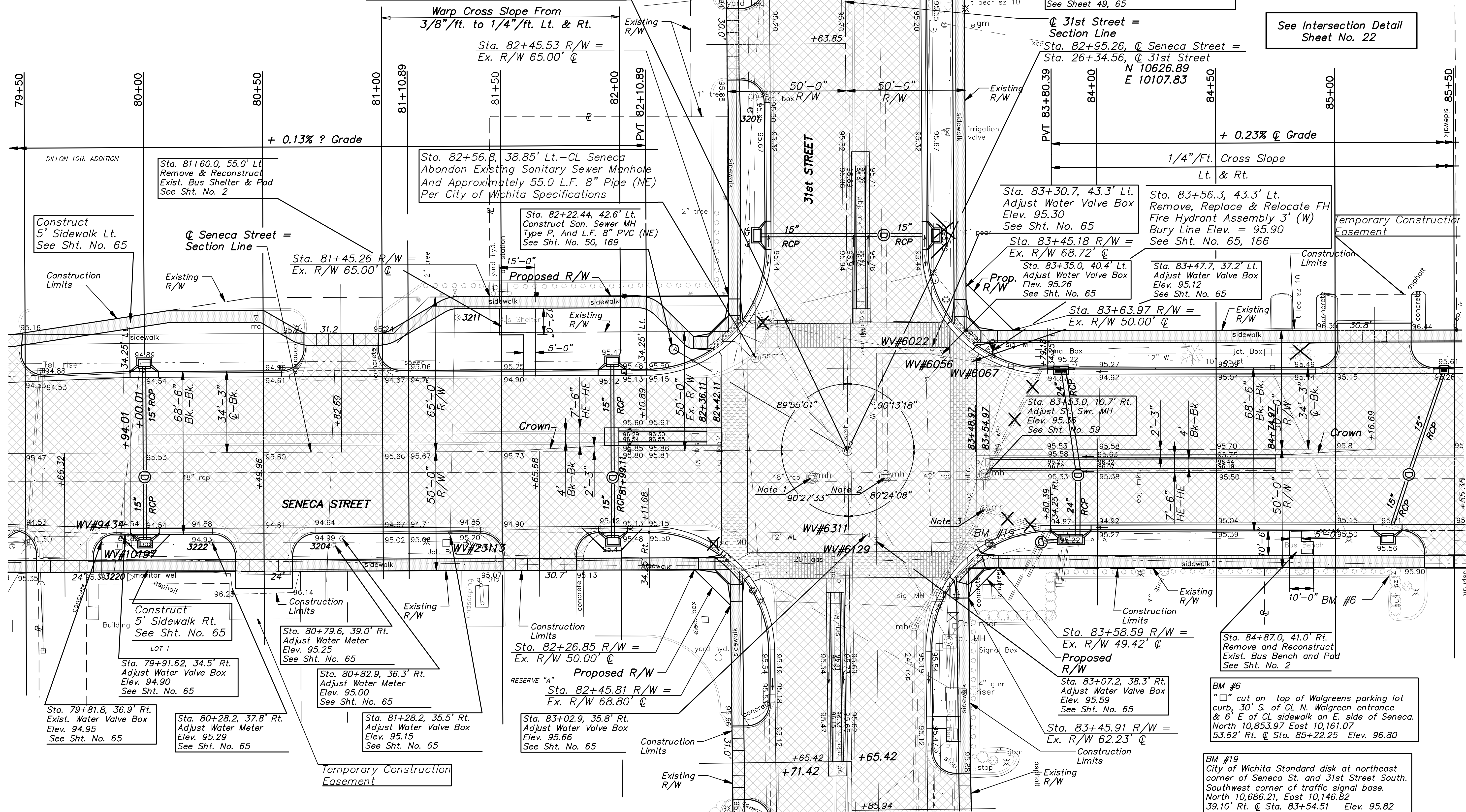
- Found a Sanitary Sewer Manhole at the Corner. No monument marks were set on the Manhole. The Section Corner lands 0.1' North & 0.5' West of the center of existing manhole cover.
- Set a monument box with 5/8" rebar & MKEC CLS 39 ID cap on Section Line & 50.00' North.
 - Set a monument box with 5/8" rebar & MKEC CLS 39 ID cap on Section Line & 50.00' East.
 - Set a monument box with 5/8" rebar & MKEC CLS 39 ID cap on Section Line & 50.00' South.
 - Set a monument box with 5/8" rebar & MKEC CLS 39 ID cap on Section Line & 50.00' West.

STATE	PROJECT NO.	YEAR	SHEET NO.	TOTAL SHEETS
KANSAS	87 N-0243-01	2005	13	169

Federal Aid No. STP N024(301)
 GRAPHIC SCALE



See Intersection Detail Sheet No. 22



Sta. 82+95.1, 0.37' Rt.-CL Seneca
 Replace MH Frame & Cover w/New Pavement
 Seal Walls & Benches w/Approved Coating
 Adjust Top MH To Elev. 95.82
 See Sheet 64

Note 1
 Sta. 82+80.3, 11.5' Rt.-CL Seneca
 Replace MH Frame & Cover w/New Pvm.
 Adjust Top MH To Elev. 95.78
 See Sheet 49, 65

Note 2
 Sta. 83+11.0, 11.1' Rt.-CL Seneca
 Replace MH Frame & Cover w/New Pvm.
 Adjust Top MH To Elev. 95.72
 See Sheet 49, 65

Note 3
 Sta. 83+52.8, 25.7' Rt.-CL Seneca
 Replace MH Frame & Cover w/New Pvm.
 Adjust Top MH To Elev. 95.15
 Plug 18" RCP (NE)
 See Sheet 49, 65

Sta. 81+60.0, 55.0' Lt.
 Remove & Reconstruct
 Exist. Bus Shelter & Pad
 See Sht. No. 2

Sta. 82+56.8, 38.85' Lt.-CL Seneca
 Abandon Existing Sanitary Sewer Manhole
 And Approximately 55.0 L.F. 8" Pipe (NE)
 Per City of Wichita Specifications

Sta. 82+22.44, 42.6' Lt.
 Construct San. Sewer MH
 Type P, And L.F. 8" PVC (NE)
 See Sht. No. 50, 169

Sta. 83+30.7, 43.3' Lt.
 Adjust Water Valve Box
 Elev. 95.30
 See Sht. No. 65

Sta. 83+56.3, 43.3' Lt.
 Remove, Replace & Relocate FH
 Fire Hydrant Assembly 3' (W)
 Bury Line Elev. = 95.90
 See Sht. No. 65, 166

Sta. 83+45.18 R/W =
 Ex. R/W 68.72' @
 Sta. 83+35.0, 40.4' Lt.
 Adjust Water Valve Box
 Elev. 95.26
 See Sht. No. 65

Sta. 83+47.7, 37.2' Lt.
 Adjust Water Valve Box
 Elev. 95.12
 See Sht. No. 65

Sta. 83+63.97 R/W =
 Ex. R/W 50.00' @

Sta. 83+83.0, 10.7' Rt.
 Adjust Swr. MH
 Elev. 95.36
 See Sht. No. 59

Construct
 5' Sidewalk Lt.
 See Sht. No. 65

Construct
 5' Sidewalk Rt.
 See Sht. No. 65

Construct
 5' Sidewalk Rt.
 See Sht. No. 65

Sta. 79+91.62, 34.5' Rt.
 Adjust Water Valve Box
 Elev. 94.90
 See Sht. No. 65

Sta. 80+79.6, 39.0' Rt.
 Adjust Water Meter
 Elev. 95.25
 See Sht. No. 65

Sta. 80+82.9, 36.3' Rt.
 Adjust Water Meter
 Elev. 95.00
 See Sht. No. 65

Sta. 79+81.8, 36.9' Rt.
 Exist. Water Valve Box
 Elev. 94.95
 See Sht. No. 65

Sta. 80+28.2, 37.8' Rt.
 Adjust Water Meter
 Elev. 95.29
 See Sht. No. 65

Sta. 81+28.2, 35.5' Rt.
 Adjust Water Valve Box
 Elev. 95.15
 See Sht. No. 65

Proposed R/W
 Sta. 82+26.85 R/W =
 Ex. R/W 50.00' @
 Sta. 82+45.81 R/W =
 Ex. R/W 68.80' @

Proposed R/W
 Sta. 83+02.9, 35.8' Rt.
 Adjust Water Valve Box
 Elev. 95.66
 See Sht. No. 65

Proposed R/W
 Sta. 83+58.59 R/W =
 Ex. R/W 49.42' @
 Sta. 83+07.2, 38.3' Rt.
 Adjust Water Valve Box
 Elev. 95.59
 See Sht. No. 65

Proposed R/W
 Sta. 83+45.91 R/W =
 Ex. R/W 62.23' @

Sta. 84+87.0, 41.0' Rt.
 Remove and Reconstruct
 Exist. Bus Bench and Pad
 See Sht. No. 2

BM #6
 "X" cut on top of Walgreens parking lot
 curb, 30' S. of CL N. Walgreen entrance
 & 6' E of CL sidewalk on E. side of Seneca.
 North 10,853.97 East 10,161.07
 53.62' Rt. @ Sta. 85+22.25 Elev. 96.80

BM #19
 City of Wichita Standard disk at northeast
 corner of Seneca St. and 31st Street South.
 Southwest corner of traffic signal base.
 North 10,686.21, East 10,146.82
 39.10' Rt. @ Sta. 83+54.51 Elev. 95.82

SENECA STREET
 1-235 TO 31ST STREET
 CITY OF WICHITA, KANSAS
 STA. 79+50 TO STA. 85+50

POE & ASSOCIATES, INC.
 CONSULTING ENGINEERS
 5940 E. Central, Suite 200 □ Wichita, KS
 67208-4242
 Phone 316/685-4114 □ FAX 316/685-4444

Engineer: P. FERGUSON
 Designer: J. UNRUH
 KDOT Job No.: 87 N-0243-01 Poe Job No.: 1794
 Date: JANUARY 2010

Sheet
 13 of 169