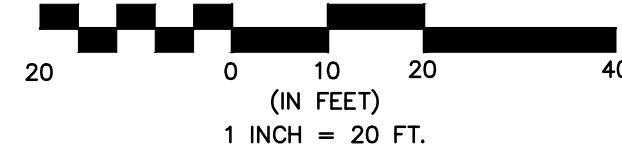


STATE	PROJECT NO.	YEAR	SHEET NO.	TOTAL SHEETS
KANSAS	87 N-0243-01	2005	14	169

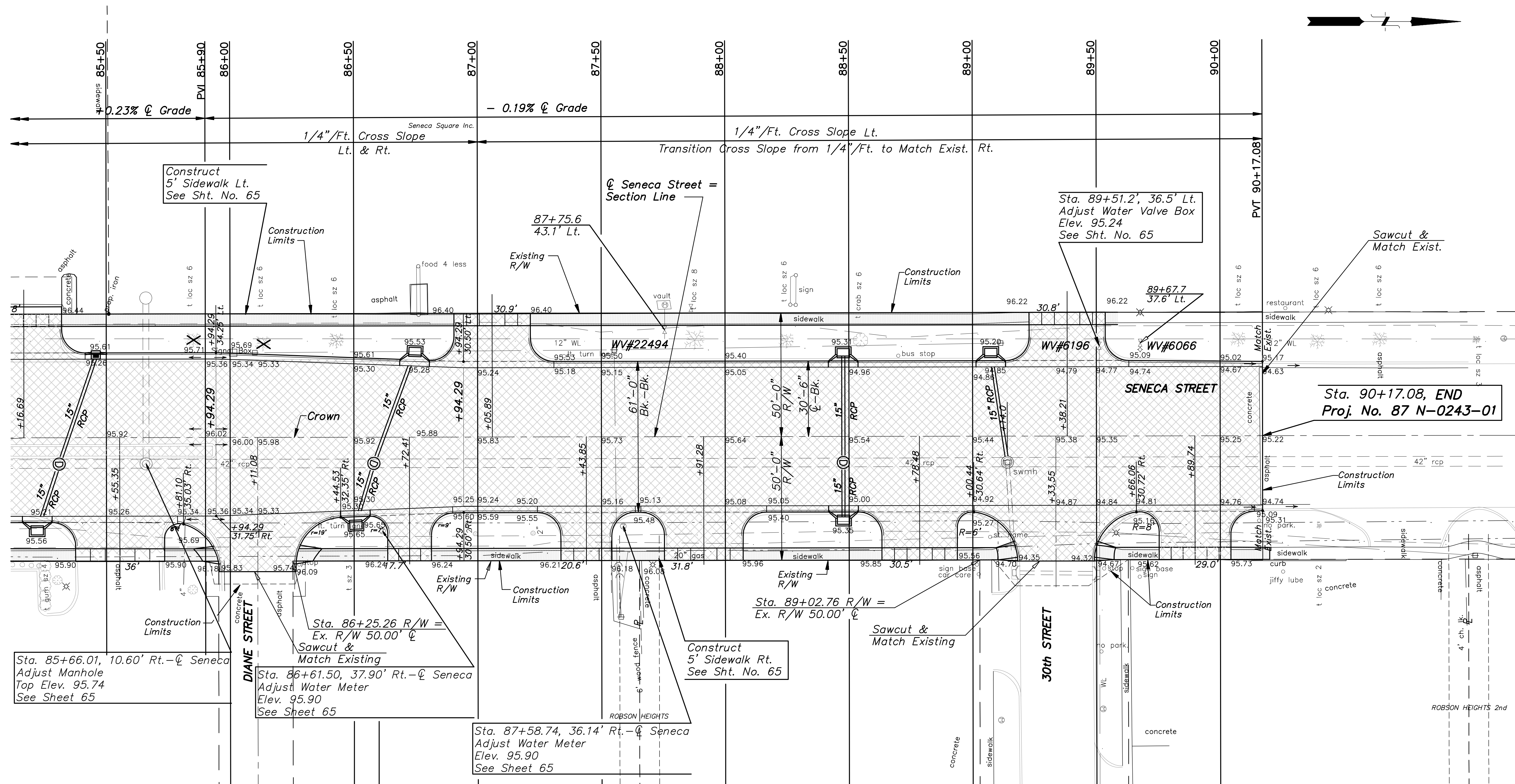
Federal Aid No. STP N024(301)

GRAPHIC SCALE



East Quarter Section Corner
Sec 6-T285-R1E

- 1/2" Iron pipe in thimble.
- "X" on top curb in parking lot, 66.49' (NW).
- "X" on top step in front of church, 99.11' (SW).
- "X" on top of concrete sign base, 68.67' (SE).
- "X" on top of concrete sign base, 65.78' (NE).



Sta. 85+66.01, 10.60' Rt. - ϕ Seneca
Adjust Manhole
Top Elev. 95.74
See Sheet 65

Sta. 86+61.50, 37.90' Rt. - ϕ Seneca
Adjust Water Meter
Elev. 95.90
See Sheet 65

Sta. 87+58.74, 36.14' Rt. - ϕ Seneca
Adjust Water Meter
Elev. 95.90
See Sheet 65

Sta. 86+25.26 R/W =
Ex. R/W 50.00' ϕ
Sawcut &
Match Existing

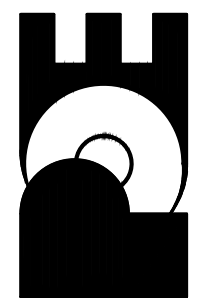
Sta. 89+02.76 R/W =
Ex. R/W 50.00' ϕ

Sta. 90+17.08, END
Proj. No. 87 N-0243-01

No.	Date	By	Approved	Revision

SENeca STREET
1-235 TO 31ST STREET
CITY OF WICHITA, KANSAS
STA. 85+50 TO STA. 90+17.08

POE & ASSOCIATES, INC.
CONSULTING ENGINEERS
5940 E. Central, Suite 200 | Wichita, KS
67208-4242
Phone: 316.685-4114 | FAX: 316.685-4444



Engineer: P. FERGUSON
Designer: J. UNRUH
KDOT Job No.: 87 N-0243-01
Date: JANUARY 2010