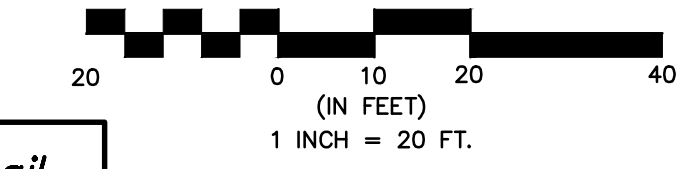


STATE	PROJECT NO.	YEAR	SHEET NO.	TOTAL SHEETS
KANSAS	87 N-0243-01	2005	16	169

Federal Aid No. STP N024(301)
GRAPHIC SCALE

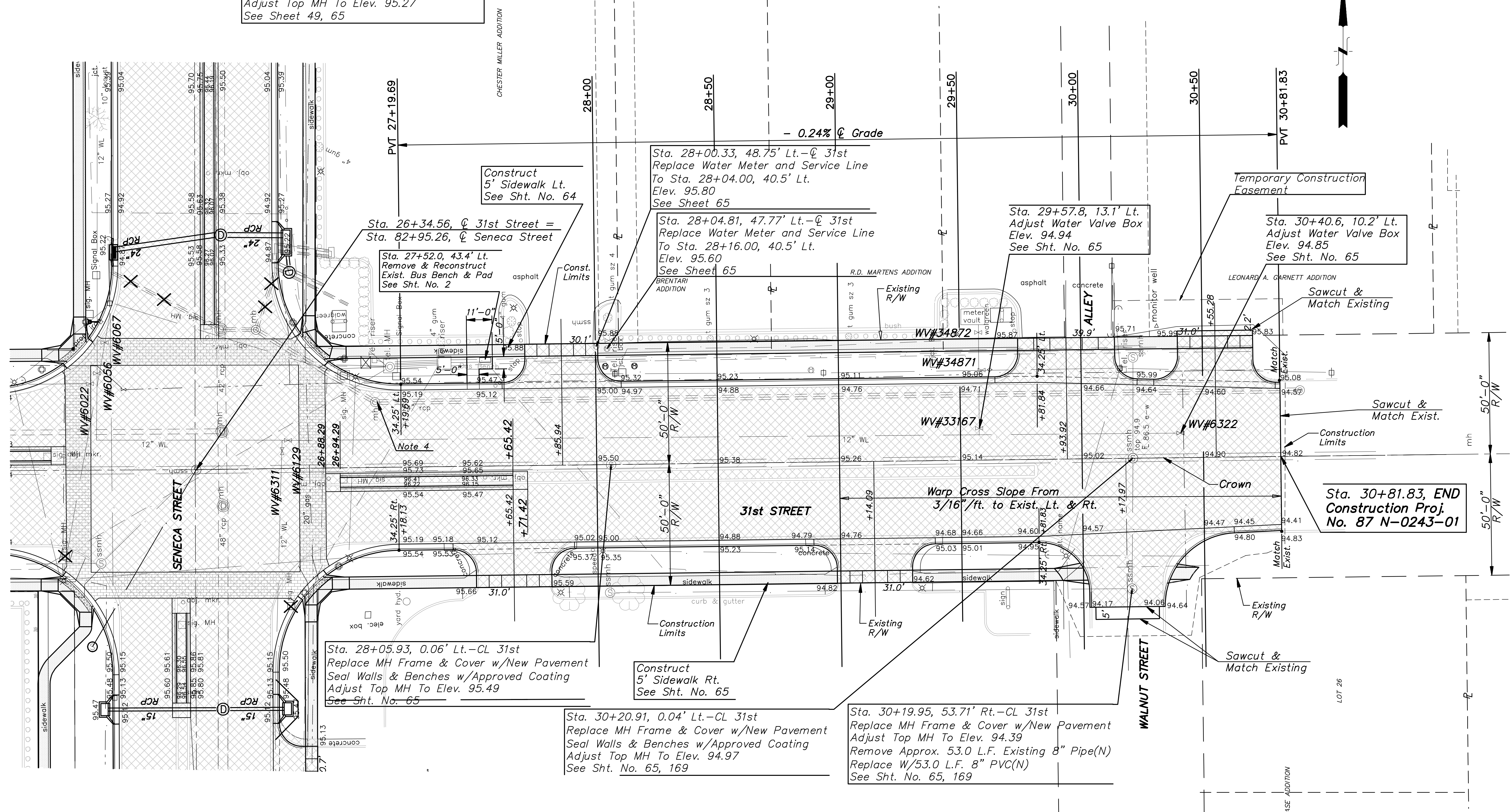


North Quarter Section Corner
Sec 8-T28S-R1E

1. Set a 5/8" Rebar with MKEC CLS 39 Id Cap in a Thimble.
2. 1/2" pipe at the SW corner of Lot 9, Blk 2, Louis 8th Addn., 50.00' (N) 0deg46'46"W.
3. Centerline East face of Railroad R/W Marker Rail, 55.56' (S) 1deg49'40"E.

See Intersection Detail
Sheet No. 22

Note 4 Sta. 27+09.0, 26.9' Lt.-CL 31st Street
Replace MH Frame & Cover w/New Pvmnt.
Adjust Top MH To Elev. 95.27
See Sheet 49, 65



Sta. 28+05.93, 0.06' Lt.-CL 31st
Replace MH Frame & Cover w/New Pavement
Seal Walls & Benches w/Approved Coating
Adjust Top MH To Elev. 95.49
See Sht. No. 65

Sta. 30+20.91, 0.04' Lt.-CL 31st
Replace MH Frame & Cover w/New Pavement
Seal Walls & Benches w/Approved Coating
Adjust Top MH To Elev. 94.97
See Sht. No. 65, 169

Sta. 30+19.95, 53.71' Rt.-CL 31st
Replace MH Frame & Cover w/New Pavement
Adjust Top MH To Elev. 94.39
Remove Approx. 53.0 L.F. Existing 8" Pipe(N)
Replace w/53.0 L.F. 8" PVC(N)
See Sht. No. 65, 169

Sta. 30+81.83, END
Construction Proj.
No. 87 N-0243-01

No.	Date	By	Approved	Revision

SENECA STREET
1-235 TO 31ST STREET
CITY OF WICHITA, KANSAS
STA. 27+00 TO STA. 30+81.83

POE & ASSOCIATES, INC.
CONSULTING ENGINEERS
5940 E. Central, Suite 200 □ Wichita, KS
67208-4242
Phone: 316/685-4114 □ FAX: 316/685-4444

PE

Engineer: P. FERGUSON
Designer: J. UNRUH
KDOT Job No.: 87 N-0243-01 Poe Job No.: 1794
Date: JANUARY 2010

Sheet
16 of 169