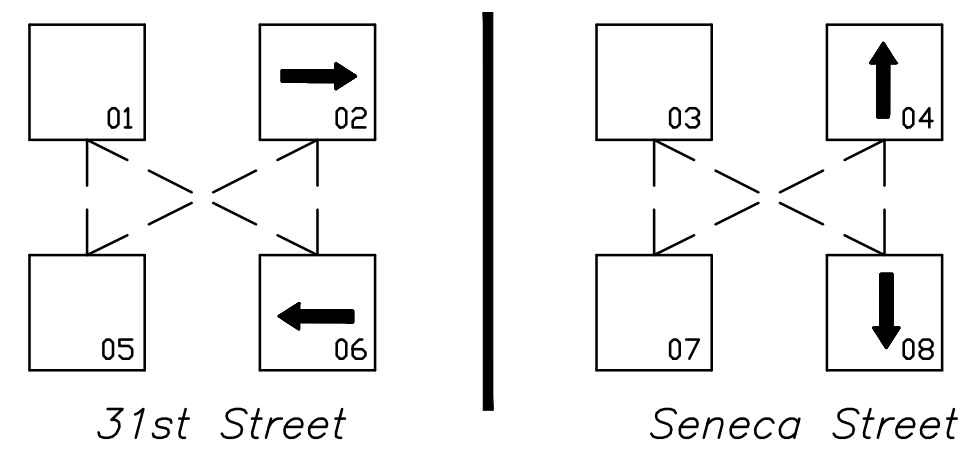


STATE	PROJECT NO.	YEAR	SHEET NO.	TOTAL SHEETS
KANSAS	87 N-0243-01	2005	124	169
Federal Aid No. STP N024(301)				

**TEMPORARY SIGNAL GENERAL NOTES:**

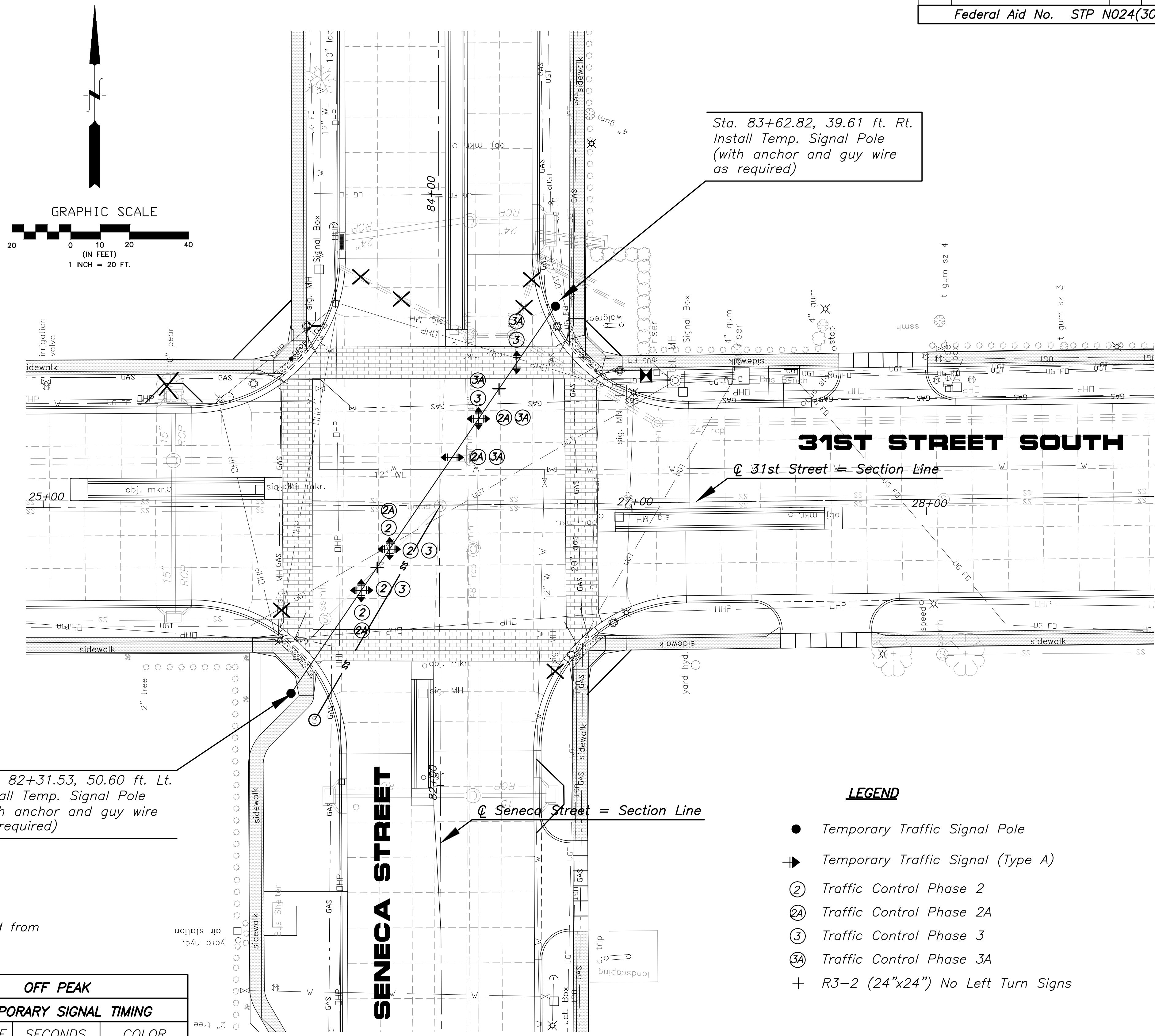
- All wiring installed shall conform to the National Electric Code and local ordinances and requirements.
- All signal cable and feeder runs to be carried overhead on span wire across roadways or in conduit under roadways.
- The operation and maintenance shall be the responsibility of the Contractor.
- All signal indications, clearances, and sequences shall be in ordinance with the current MUTCD.
- The span wire signal heads shall be centered over exit lanes according to construction phase.
- The temporary traffic signal shall be switched on during off-peak hours. When switching signals, flaggers will be required. See this sheet for Temporary Signal Timing.
- The terminal blocks shall be in a weatherproof enclosure.
- All necessary signal head, controller and pole relocations, whether specifically mentioned or not, shall be the Contractor's responsibility.
- Traffic signal heads which are in place and not in use during a specific step shall be removed.
- Signal phasing and timing shall be set in accordance with the plans. Changes may be needed during construction as approved by the engineer.
- Signal controller shall be capable of a standard eight phase operation, with green interval setable from 0 to 255 seconds.
- The traffic signal controller must be capable of storing a minimum of three separate phasing/timing plans, which can be selected on a time-of-day basis.
- In case of signal malfunction, the Contractor must respond within one hour.
- Traffic Control Phase 4 signalization will be handled by the permanent signals.
- Adjust signal pole locations as necessary to avoid utilities.
- Install R3-2 (No Left Turn) signs on temporary signal span wire.



**SIGNAL PHASING**

All time settings shall be user adjustable and shall be accomplished from the equipment front panel by way of a keyboard and menu screen format.

7 A.M. TO 9 A.M. PEAK			4 P.M. TO 7 P.M. PEAK			OFF PEAK		
TEMPORARY SIGNAL TIMING			TEMPORARY SIGNAL TIMING			TEMPORARY SIGNAL TIMING		
SIG. PHASE	SECONDS	COLOR	SIG. PHASE	SECONDS	COLOR	SIG. PHASE	SECONDS	COLOR
02 & 06	30	GREEN	02 & 06	30	GREEN	02 & 06	15	GREEN
	4.0	YELLOW		4.0	YELLOW		4.0	YELLOW
	1.5	ALL RED		1.5	ALL RED		1.5	ALL RED
04 & 08	40	GREEN	04 & 08	40	GREEN	04 & 08	25	GREEN
	4.0	YELLOW		4.0	YELLOW		4.0	YELLOW
	1.5	ALL RED		1.5	ALL RED		1.5	ALL RED



Sta. 82+31.53, 50.60 ft. Lt.  
Install Temp. Signal Pole  
(with anchor and guy wire  
as required)

Sta. 83+62.82, 39.61 ft. Rt.  
Install Temp. Signal Pole  
(with anchor and guy wire  
as required)

**LEGEND**

- Temporary Traffic Signal Pole
- ➔ Temporary Traffic Signal (Type A)
- ② Traffic Control Phase 2
- ②A Traffic Control Phase 2A
- ③ Traffic Control Phase 3
- ③A Traffic Control Phase 3A
- + R3-2 (24"x24") No Left Turn Signs

No.	Date	By	Approved	Revision
<b>POE &amp; ASSOCIATES, INC.</b> CONSULTING ENGINEERS 5940 E. Central, Suite 200   Wichita, KS Phone: 316.685-4114   FAX: 316.685-4444				
<b>WICHITA</b>				
Engineer: P. FERGUSON Designer: J. UNRUH KDOT Job No.: 87 N-0243-01   Poe Job No.: 1794 Date: JANUARY 2010				

SENECA STREET  
 1-235 TO 31ST STREET  
 CITY OF WICHITA, KANSAS  
 TEMPORARY TRAFFIC SIGNAL PLANS