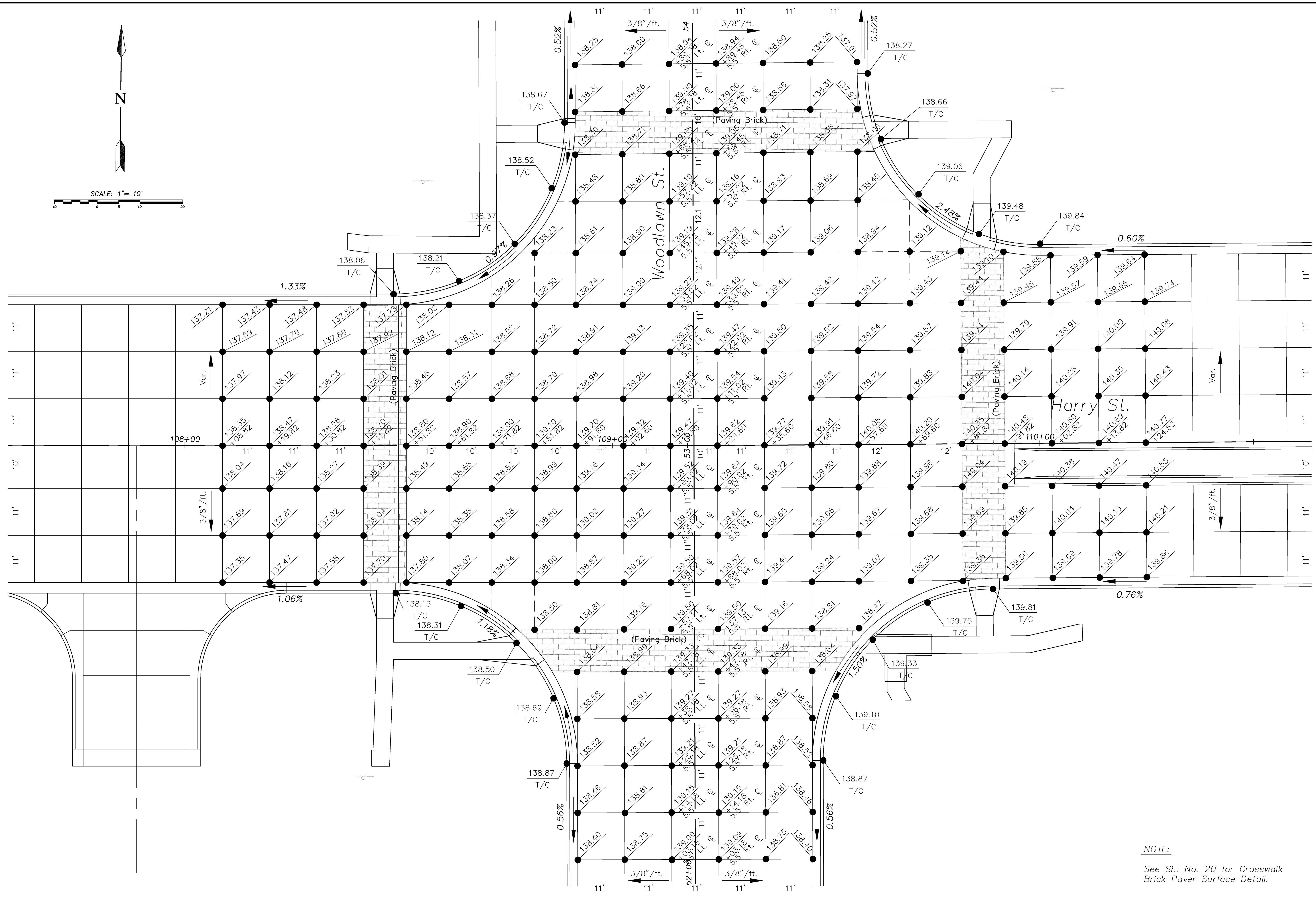




SCALE: 1" = 10'



REVISED



Cook, Flatt & Strobel  
ENGINEERS, P.A.  
CFS

CFS PROJECT NO:  
10-5048

CITY OF WICHITA, KANSAS  
**E. HARRY ST. & WOODLAWN ST.  
INTERSECTION**  
DATE: 08-01-11. DESIGNED BY: KKH. DRAWN BY: BMG. CHECKED BY: KWB

SHEET TITLE:  
**INTERSECTION  
GRADE  
DETAILS**

PROJECT NUMBER  
87N-0494-01

**FINAL  
PLANS**

SHEET NUMBER:  
**15.001 of 69**

NOTE:  
See Sh. No. 20 for Crosswalk  
Brick Paver Surface Detail.

J:\2011\87N-0494\INTERSECTION GRADE DETAIL.dwg, INT. DETAIL, 8/28/11, 3:04:41 PM