

REVISED

---



---

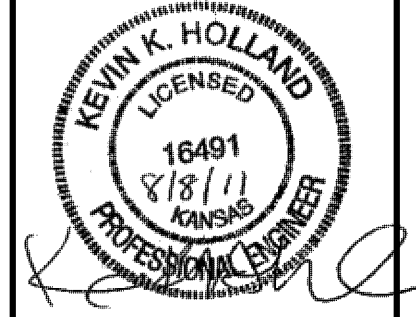


---



---

SEAL:



**CFS** Cook, Flatt & Strobel  
ENGINEERS, P.A.

CFS PROJECT NO:  
10-5048

CITY OF WICHITA, KANSAS  
**E. HARRY ST. & WOODLAWN ST.  
INTERSECTION**

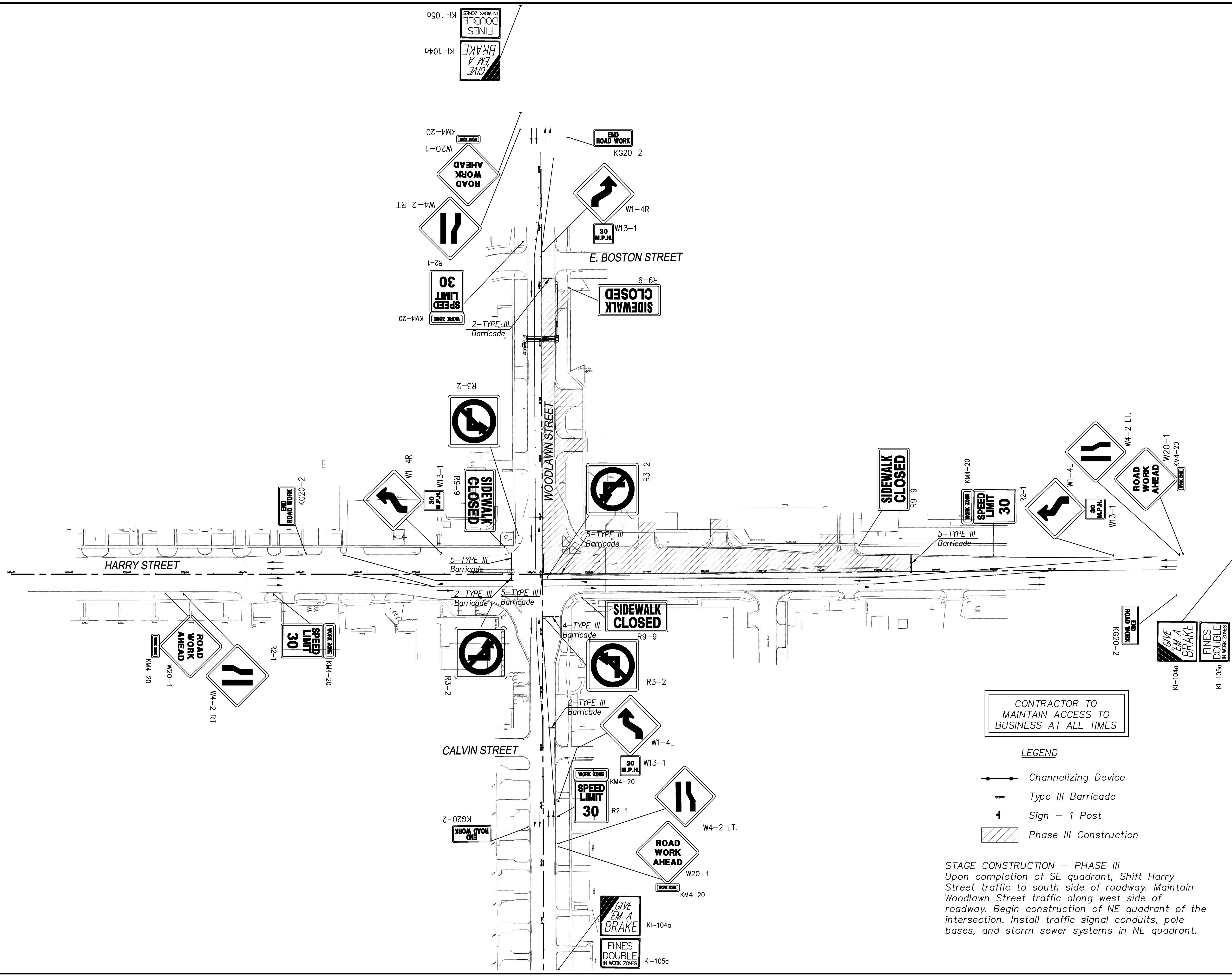
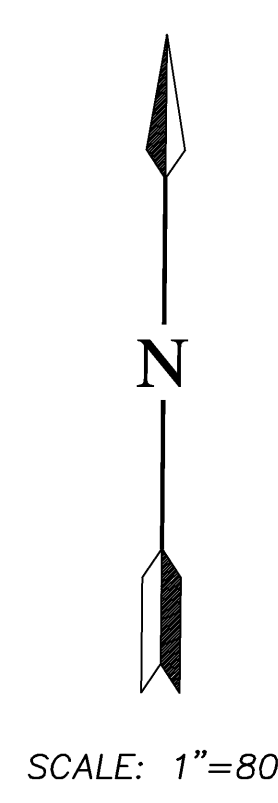
SHEET TITLE:  
**CONSTRUCTION  
SEQUENCE  
PH III**

**HARRY ST.**  
PROJECT NUMBER  
87N-0494-01

**FINAL  
PLANS**

SHEET NUMBER:  
32 of 69

DATE: 08-01-11 DESIGNED BY: JKH DRAWN BY: BMC CHECKED BY: KWE



CONTRACTOR TO  
MAINTAIN ACCESS TO  
BUSINESS AT ALL TIMES

**LEGEND**

- Channelizing Device
- Type III Barricade
- ↑ Sign - 1 Post
- ▨ Phase III Construction

STAGE CONSTRUCTION - PHASE III  
Upon completion of SE quadrant, Shift Harry Street traffic to south side of roadway. Maintain Woodlawn Street traffic along west side of roadway. Begin construction of NE quadrant of the intersection. Install traffic signal conduits, pole bases, and storm sewer systems in NE quadrant.

FINES DOUBLE IN WORK ZONES KI-105a  
GIVE EM A BRAKE KI-104a

FINES DOUBLE IN WORK ZONES KI-105a  
GIVE EM A BRAKE KI-104a

X:\2010\102506\03\HARRY ST. SEQUENCE PLAN\CONSTR. SEQUENCE PHASE III\_8/1/2011 11:52:59 AM