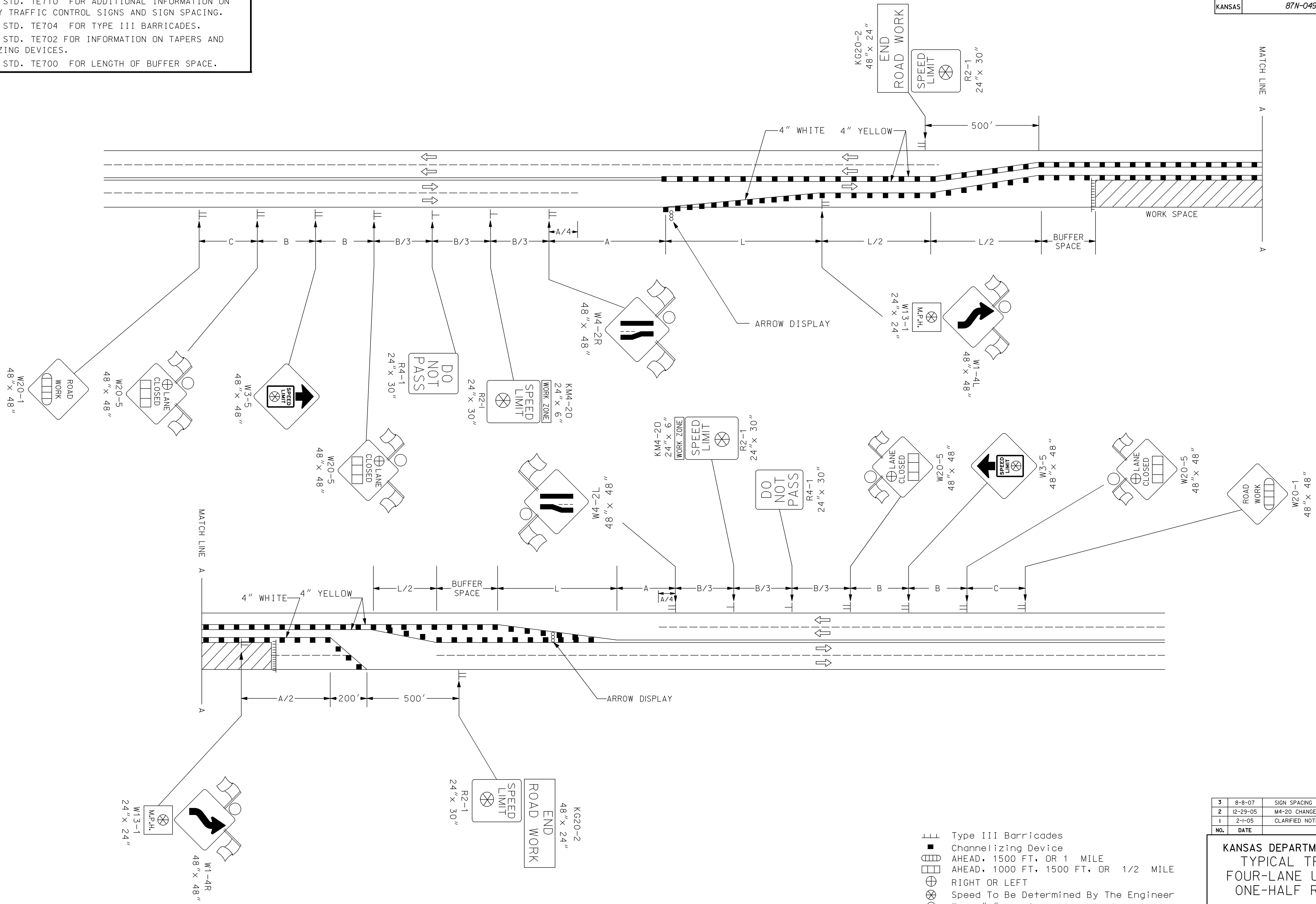


REFER TO STD. TE710 FOR ADDITIONAL INFORMATION ON TEMPORARY TRAFFIC CONTROL SIGNS AND SIGN SPACING.  
REFER TO STD. TE704 FOR TYPE III BARRICADES.  
REFER TO STD. TE702 FOR INFORMATION ON TAPERS AND CHANNELIZING DEVICES.  
REFER TO STD. TE700 FOR LENGTH OF BUFFER SPACE.



- ▬ Type III Barricades
- Channelizing Device
- ▬ AHEAD, 1500 FT, OR 1 MILE
- ▬ AHEAD, 1000 FT, 1500 FT, OR 1/2 MILE
- ⊕ RIGHT OR LEFT
- ⊗ Speed To Be Determined By The Engineer
- Type "A" Low Intensity Warning Light

NO.	DATE	REVISIONS	BY	APP'D
3	8-8-07	SIGN SPACING CHANGE	M.B.	A.A.A.
2	12-29-05	M4-20 CHANGED TO K4-20	M.B.	A.A.A.
1	2-1-05	CLARIFIED NOTES, UPDATED WARNING SIGNS	B.H.	A.A.A.

**KANSAS DEPARTMENT OF TRANSPORTATION**  
**TYPICAL TRAFFIC CONTROL**  
**FOUR-LANE UNDIVIDED HIGHWAY**  
**ONE-HALF ROADWAY CLOSED**  
TE748 9/1/00

FHWA APPROVAL	8-8-07	APP'D	Anthony A. Alrobalre
DESIGNED	B.A.H.	DETAILED	B.A.H.
DESIGN CK.	DETAIL CK.	QUANTITIES	TRACED
		QUAN. CK.	TRACE CK.

Plotted By : unfilled  
Plot File : \*\*\*\*\*DGN\*\*\*\*\*SPEC\*\*\*\*\*  
Plot Date : 08/30/2011  
\*\*\*KDOT GRP\*\*\*