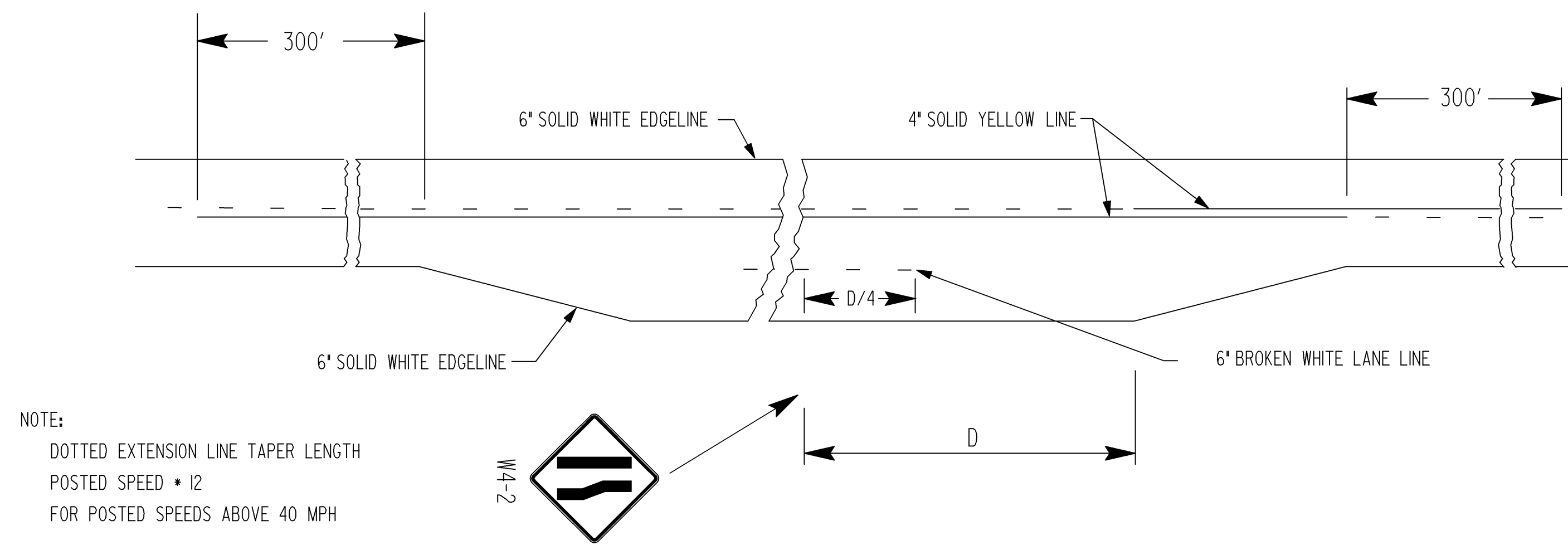


STATE	PROJECT NO.	YEAR	SHEET NO.	TOTAL SHEETS
KANSAS	87N-0494-01	2011	45	69

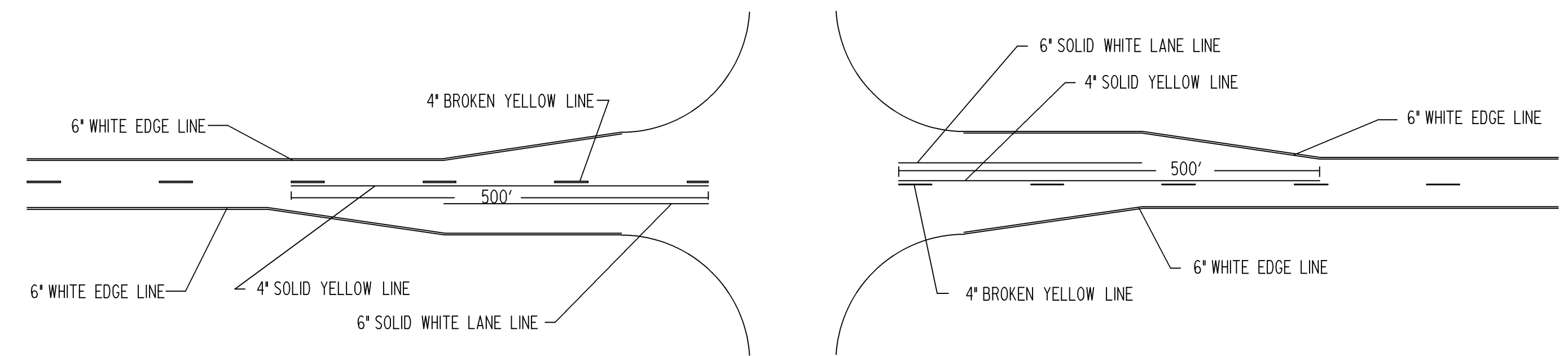
NOTE: ALL PAVEMENT MARKINGS SHALL BE BROKEN AT CROSS ROADS.
FOR HIGHWAY JUNCTIONS THE NO PASSING ZONE WILL EXTEND 1000' FROM INTERSECTION

FOR HIGHWAY JUNCTIONS THE NO PASSING ZONE WILL EXTEND 1000' FROM INTERSECTION

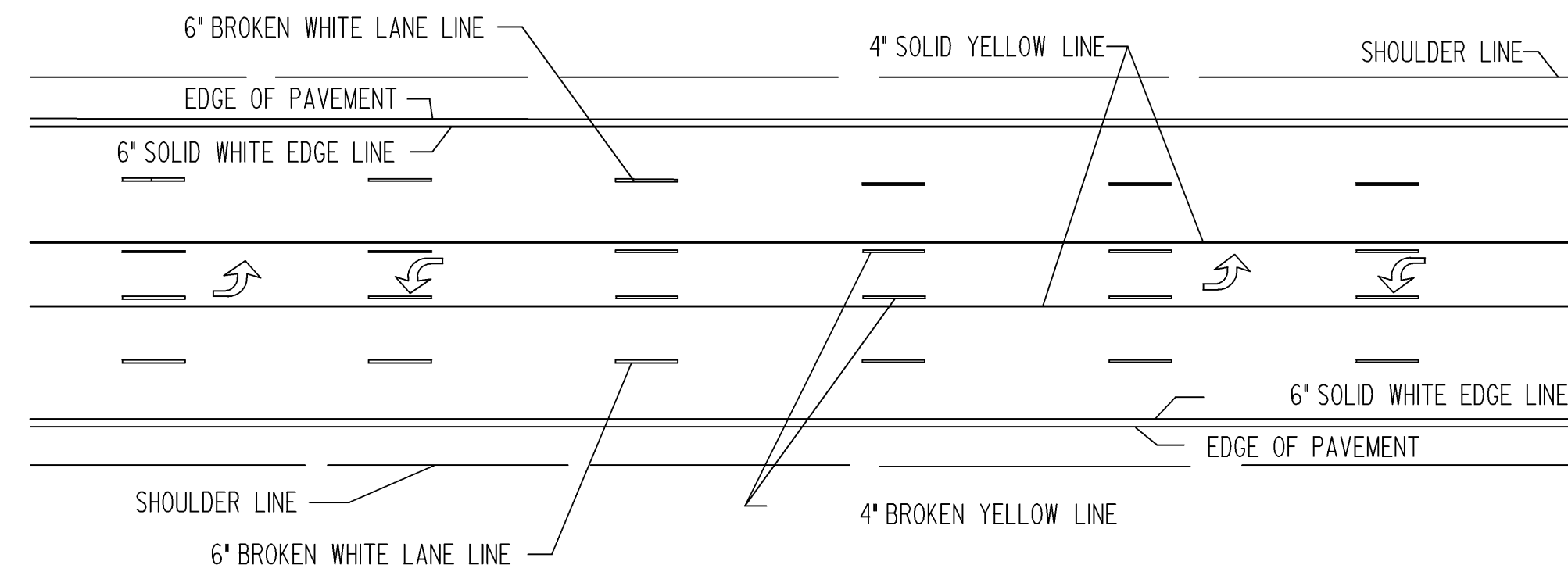


NOTE:
DOTTED EXTENSION LINE TAPER LENGTH
POSTED SPEED * 12
FOR POSTED SPEEDS ABOVE 40 MPH

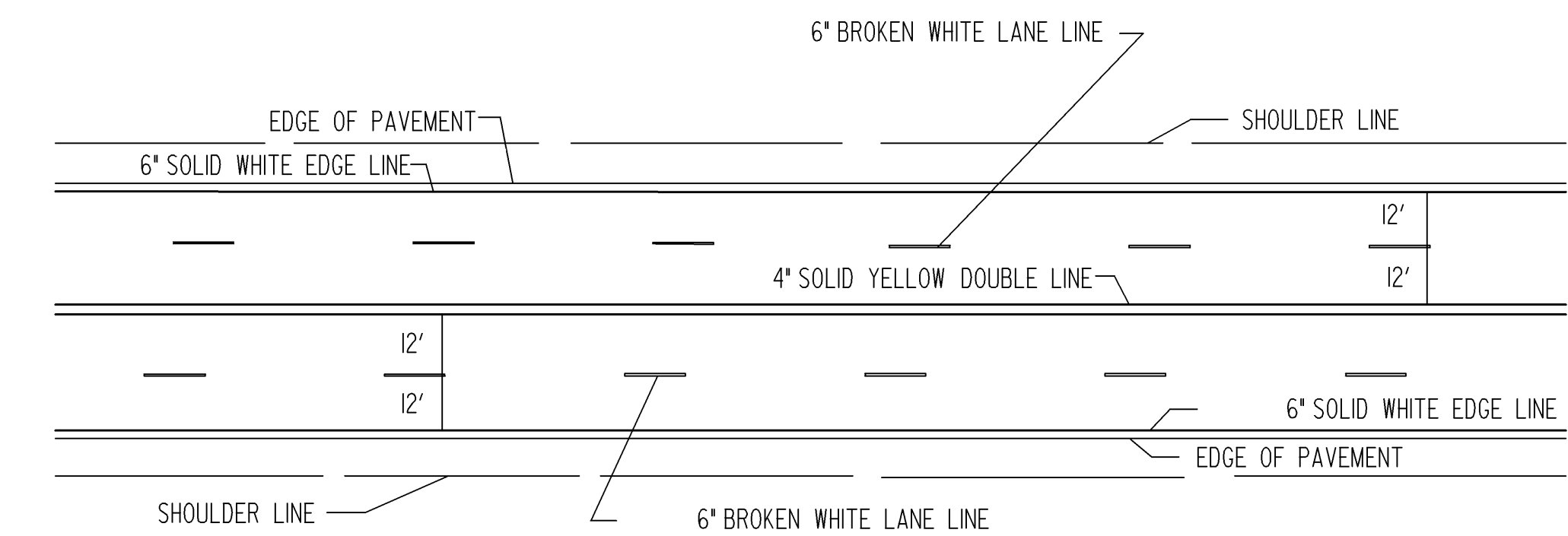
TYPICAL MARKING FOR AUXILIARY PASSING LANE



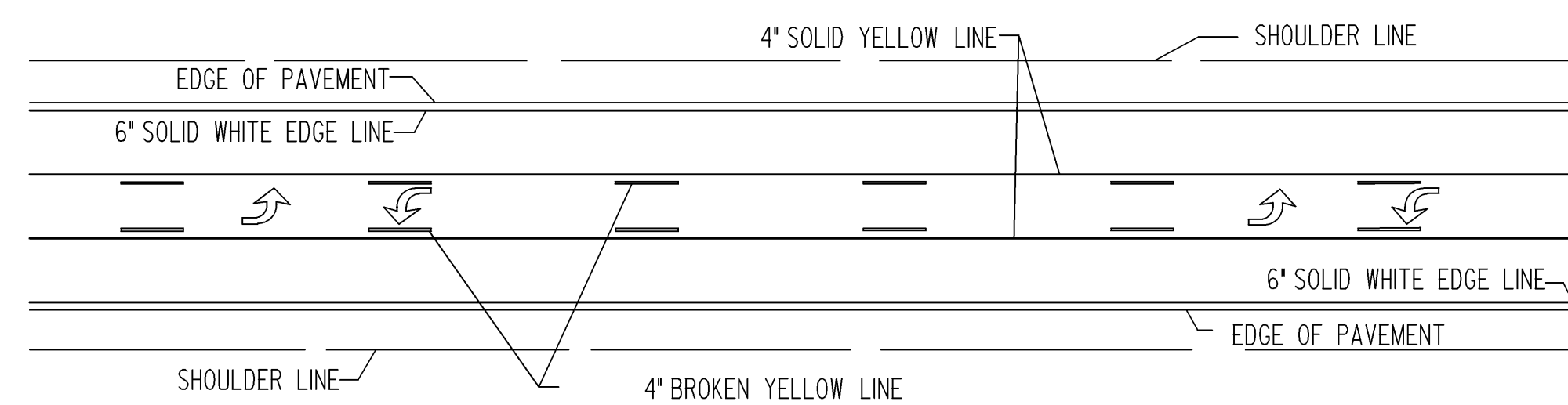
TYPICAL ROAD JUNCTION MARKINGS WITH BYPASS LANES



TWO-WAY LEFT TURN DETAIL FOR FIVE LANE ROADWAY



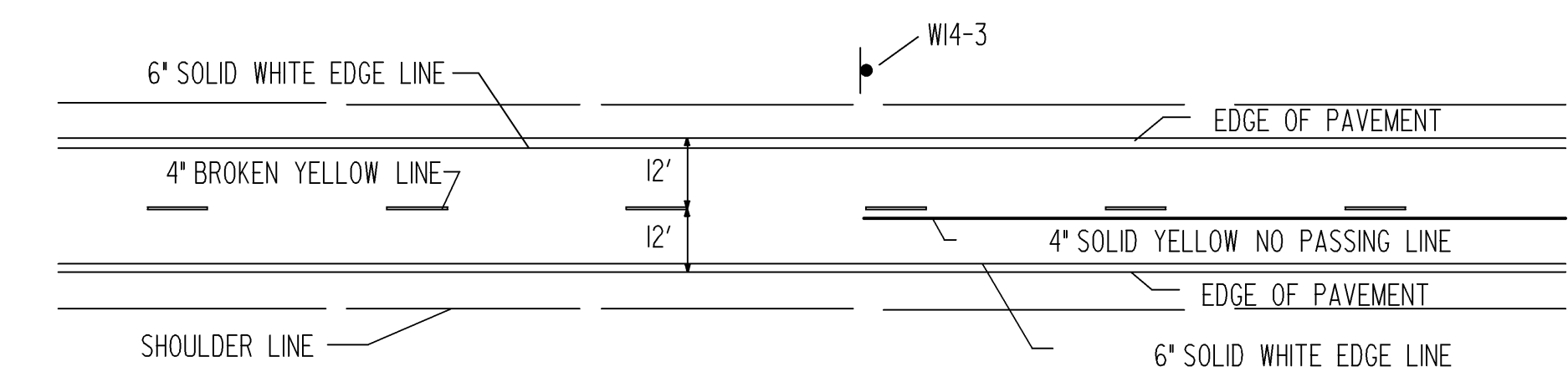
TYPICAL MARKINGS FOR FOUR LANE ROADWAY



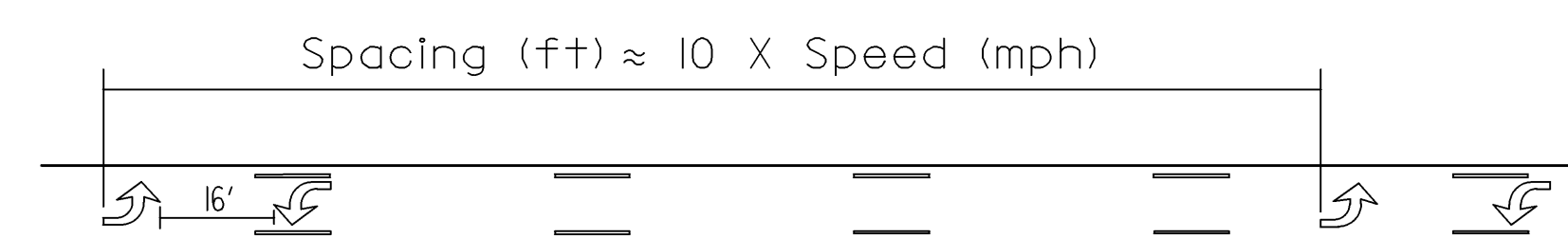
TWO-WAY LEFT TURN DETAIL FOR THREE LANE ROADWAY



TYPICAL SPACING FOR BROKEN LINES UNLESS OTHERWISE NOTED ON PLANS

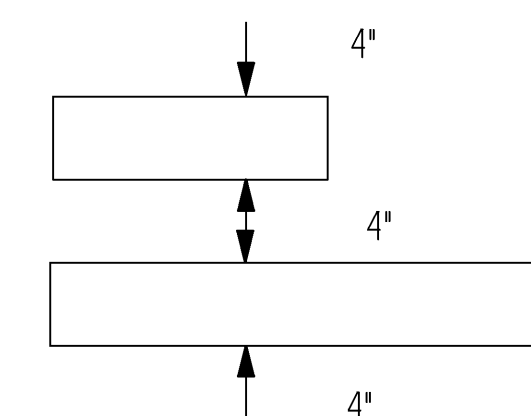


TYPICAL TWO LANE MARKINGS



TWO-WAY LEFT TURN ARROW SPACING DETAIL

NOTE: If arrows are used space the arrows as shown in the spacing detail



TYPICAL SPACING FOR NO PASSING LINES UNLESS OTHERWISE NOTED ON PLANS

NOTE:
LONGITUDINAL PAVEMENT MARKING LINES SHALL BE OFFSET A MINIMUM OF 2" FROM LONGITUDINAL PAVEMENT JOINTS.

NOTE:
ON NON I, US, AND K ROUTES, 4" EDGE LINES MAY BE INSTALLED. 6" EDGE LINES ARE NOT REQUIRED ON NON I, US, AND K ROUTES.

Plotted By : unfiled
 Plot File : *****DGN*****SPEC*****
 Plot Date : 8/30/2011

3					
2	09/20/2005	Removed auxiliary passing lane dotted extension line	JFF	BDG	
1	07/26/2005	New FHWA Approval	JFF	BDG	
NO.	DATE		BY	APP'D	

KANSAS DEPARTMENT OF TRANSPORTATION
TYPICAL PAVEMENT MARKING DETAILS FOR UNDIVIDED ROADWAYS

TE308

FHWA APPROVAL	07/26/2005	APP'D	Brian D. Gower
DESIGNED	JFF	QUANTITIES	TRACED
DESIGN CK.	BDG	QUAN. CK.	TRACE CK.