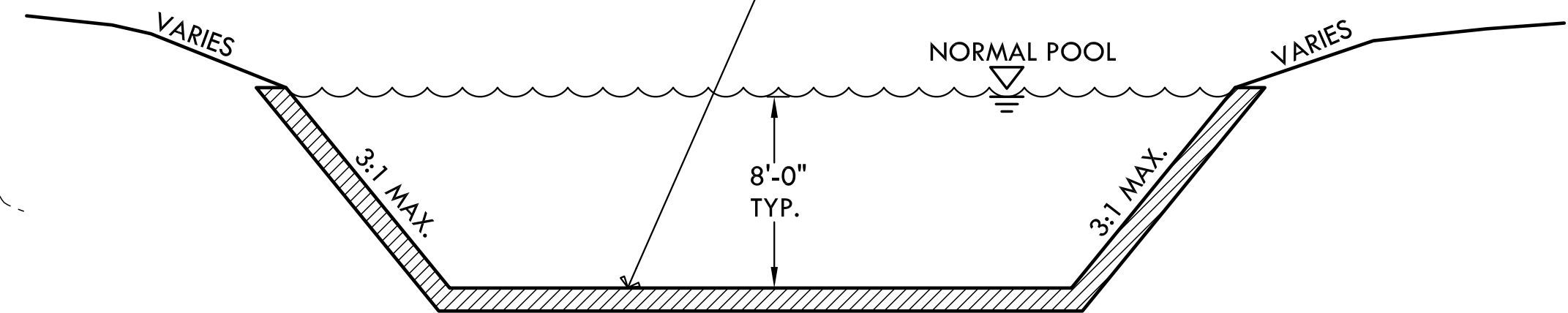


NOTE:
CONTRACTOR SHALL DEWATER AND OVER EXCAVATE MUCK AND NON STABLE MATERIAL FROM EXISTING POND. POND SHALL BE FILLED TO PROPOSED GRADE AND COMPACTED TO 95% STANDARD PROCTOR IN 8" LIFTS.

MUCK SHALL BE SPREAD SOUTH OF THE EXISTING POND WITHIN THE LIMITS OF DISTURBANCE TO A MAXIMUM DEPTH OF 1'-0". MUCK EXCAVATION AND DISTRIBUTION COST SHALL BE SUBSIDIARY TO PROJECT.

SEED ALL DISTURBED AREA WITH ANNUAL RYE.

OVER EXCAVATE 12" OF SOIL. PLACE IN TWO 6" LIFTS CLAY LINER (PI-31). COMPACT TO 2% ABOVE OPTIMUM ASTM D698 95% RELATIVE MAX. DENSITY. A PERMEABILITY TEST OF THE LINER MATERIAL SHALL BE PERFORMED BY A GEOTECHNICAL SOILS ENGINEER AT TWO RANDOM LOCATIONS AS DETERMINED BY THE PROJECT INSPECTOR AT THE CONTRACTOR'S EXPENSE. THE CLAY LINER MATERIAL SHALL MEET OR EXCEED A PERMEABILITY RATING VALUE OF 1×10^{-6} CM/SEC.



1 POND DETAIL (TYP.)
NOT TO SCALE

NOTE:
CONTRACTOR SHALL MAKE EVERY EFFORT TO USE THE CHOICE MATERIAL FOR CLAY LINER. PI-31 IS A MIN.

EARTHWORK TABULATIONS:

EXCAVATION	
EXCAVATION (MUCK FROM POND)	23,000 CY
COMPACTED FILL (95% DENSITY)	750 CY

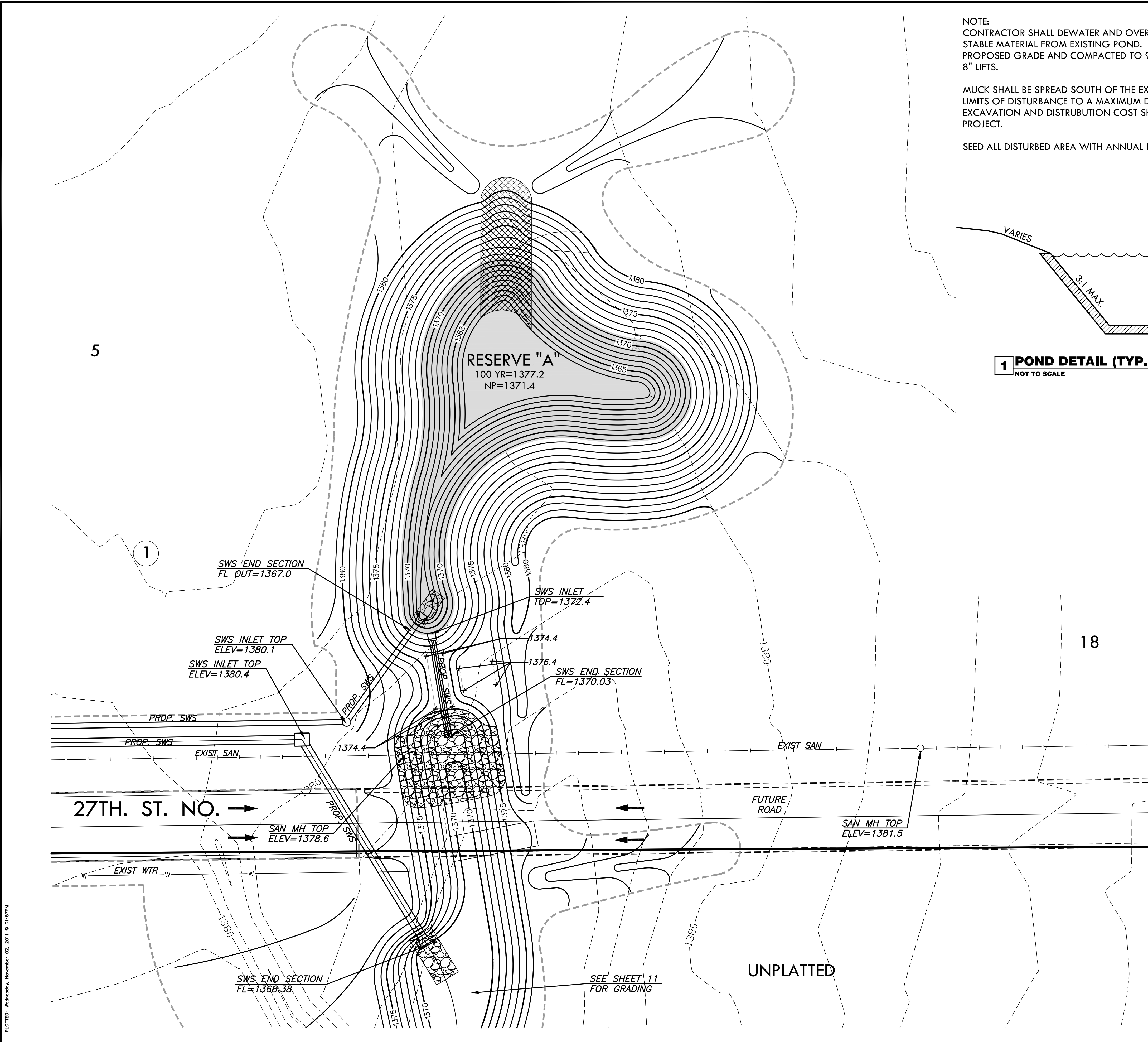
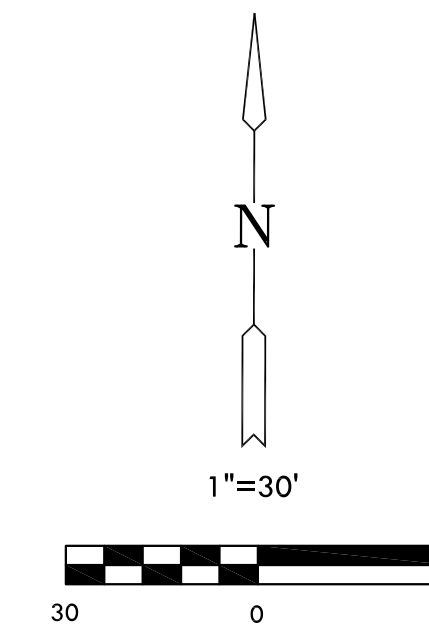
NOTE: 15% HAS BEEN ADDED TO EXCAVATION QUANTITIES TO ALLOW FOR COMPACTION AND HANDLING.

10,000 C.Y. WILL HAVE BEEN BORROWED FROM RESERVE "A" BY OTHERS PRIOR TO THIS PROJECT CONSTRUCTION

LEGEND

- PROPOSED TREE PROTECTION
- PROPOSED STORM WATER SEWER
- w- EXISTING WATER LINE
- o- EXISTING SANITARY SEWER LINE
- 1359- EXISTING CONTOURS
- 1360- PROPOSED CONTOURS
- LIMITS OF GRADING/SEEDING
- █ NORMAL POOL
- ← DRAINAGE ARROWS
- ▨ TREE REMOVAL

NOTE: A MAJORITY OF EXISTING TREES IN RESERVE "A" WILL HAVE BEEN REMOVED BY OTHERS AND PUSHED ASIDE PRIOR TO THIS PROJECT BEGINNING. REMOVED TREES SHALL BE THE RESPONSIBILITY OF THIS PROJECT. DISPOSAL COST SHALL BE SUBSIDIARY TO SITE CLEARING



PLOTTED: Wednesday, November 02, 2011 @ 01:57PM

J:\CIVIL\05039\DWG\CIVIL3D\GRAD\05039_G1.DWG