

STORM SEWER LINE PLANS

TO SERVE



MARKET STORE #5873-01

13TH STREET NORTH & OLIVER AVENUE

WICHITA, SEDGWICK COUNTY, KANSAS

PROJECT NO. 0045 PPD (607861)

2011

OWNERS' ADDRESS

WAL-MART STORES, INC.
702 S.W. 8th STREET
BENTONVILLE, AR 72716
PH. (479) 273-4000

SHEET INDEX

C-9.0	TITLE SHEET
C-9.1	STORM SEWER LOCATION PLAN
C-9.2	ERU PLAN
C-9.3	PROPOSED DRAINAGE PLAN
C-9.4	PROPOSED WATERSHED & STORM SEWER SUMMARY
C-9.5	STORM SEWER LINE 'A' PLAN & PROFILE
C-9.6	DETENTION POND PLAN
C-9.7	MANUFACTURE'S DETAILS & MODIFIED SINGLE/DOUBLE DROP INLET W/ SWQ DEVICE
C-9.8	SUMP PUMP DETAILS
C-9.9	STORM SEWER DETAILS
C-9.10	STORM SEWER DETAILS
C-9.11	DESIGN 6 INLET DETAILS

EROSION CONTROL PLANS ARE PROVIDED IN THE SITE DEVELOPMENT PLANS MARKET STORE #5873-01 AND ARE AVAILABLE UPON REQUEST FROM THE ENGINEER

I, Terence L. Haynes, Kansas Professional Engineer, #14583, do hereby state that these Storm Sewer Line plans, prepared by me or under my direct, responsible supervision, are in strict conformance with the applicable Codes of the City of Wichita and the sound principles and practice of the Civil Engineering profession

Terence L. Haynes
TERENCE L. HAYNES, P.E. #14583

CITY RESOURCE LIST

CITY MANAGER
CITY MANAGER'S OFFICE
CITY OF WICHITA
455 N. MAIN - CITY HALL
WICHITA, KS 67202
CONTACT: ROBERT LAYTON
PH: (316) 268-4351
FAX: (316) 858-7712

CITY ENGINEER
PUBLIC WORKS
CITY OF WICHITA
455 N. MAIN - CITY HALL
WICHITA, KS 67202
CONTACT: JIM ARMOUR
PH: (316) 268-4266
FAX: (316) 268-4114

PLANNING / ZONING
METROPOLITAN AREA PLANNING
DEPARTMENT
CITY OF WICHITA
455 N. MAIN - CITY HALL
WICHITA, KANSAS 67202
CONTACT: BILL LONGNECKER
PH: (316) 268-4494
FAX: (316) 268-4390

GAS
BLACK HILLS ENERGY
1611 SOUTH HOOVER
WICHITA, KS 67209
CONTACT: CALVIN BRIGGS
PH: (316) 941-1608
FAX: (316) 942-7096

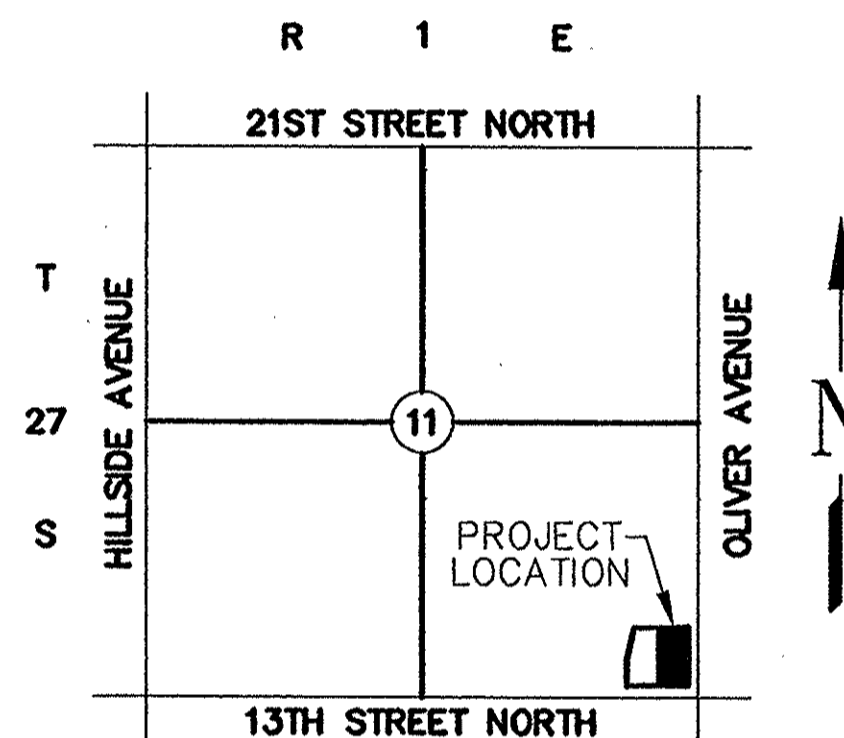
TELEPHONE
AT&T
154 NORTH BROADWAY
ROOM 210
WICHITA, KS 67202
CONTACT: MARK OLSEN
PH: (316) 268-2105
FAX: (316) 268-3110

ELECTRIC
WESTAR ENERGY
P.O. BOX 208
WICHITA, KS 67201
CONTACT: SHANE PRICE
PH: (316) 261-6824
FAX: (316) 261-6979

SANITARY SEWER
PUBLIC WORKS
CITY OF WICHITA
455 N. MAIN - CITY HALL
WICHITA, KANSAS 67202
CONTACT: BILL PERKINS
PH: (316) 268-4555
FAX: (316) 268-4114

WATER
PUBLIC WORKS
CITY OF WICHITA
455 N. MAIN - CITY HALL
WICHITA, KANSAS 67202
CONTACT: BILL PERKINS
PH: (316) 268-4555
FAX: (316) 268-4114

STORM SEWER
STORM WATER UTILITY
CITY OF WICHITA
455 N. MAIN - CITY HALL
WICHITA, KS. 67202
CONTACT: SCOTT LINDEBAK
PH: (316) 268-4908
FAX: (316) 268-4114



LOCATION MAP
NOT TO SCALE

APPROVED AS NOTED
BY CITY ENGINEER OF WICHITA:
Stormwater *Jim Armour* 9-21-11
Engineering *Shane Miller* 9-21-11

ALERT TO CONTRACTOR:

1. THE SITEWORK FOR THE WALMART PORTION OF THIS PROJECT SHALL MEET OR EXCEED THE "SITE SPECIFIC SPECIFICATIONS."
2. ALL NECESSARY INSPECTIONS AND/OR CERTIFICATIONS REQUIRED BY CODES AND/OR UTILITY SERVICE COMPANIES SHALL BE PERFORMED PRIOR TO CONTRACT COMPLETION AND THE FINAL CONNECTION OF SERVICES.

- (1) An effort has been made to locate and show approximate location of underground utility lines. Buried utilities are not necessarily shown. It is the Contractors responsibility to locate and preserve all utility services.
- (2) Proposed utility services have been coordinated with the local utility companies. Contractor is responsible for contacting all utility companies prior to construction.
- (3) All quantity estimates shown in this set of plans are the Engineer's estimate and are provided for general information only! The contractor is solely responsible for calculating his/her own quantities!
- (4) Contractor shall acquire Licensing to work in City of Wichita, shall maintain Insurance Verification per Walmart and City's requirements and shall submit necessary bonds to satisfy City of Wichita's requirements.

NOTE TO CONTRACTOR

CALL KANSAS ONE
1-800-522-6543

This number is to be used for information on the location of all underground utilities. Contact this number prior to any excavation.

BENCH MARKS

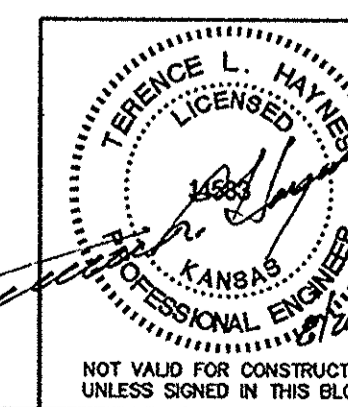
SITE BENCHMARK-1
"V" Chiseled on Conc.
NE Prop. Corner
Elevation=1309.36
DATUM = NAVD 1988

REFER STORM SEWER LOCATION PLAN
SHEET C-9.1 FOR BENCHMARK LOCATION

AS BUILTS

Contractor: Mies Construction 12/05/2011	Project Inspector: Larry Gann kemiller engineering 516 S. Market, Wichita, KS 67202 (316)268-4242
---	--

SMC Consulting Engineers, P.C.
Oklahoma City, Oklahoma



TITLE SHEET			
STORM SEWER LINE PLANS			
WALMART MARKET #5873-01			
13TH STREET NORTH & OLIVER AVENUE WICHITA, KANSAS			
SMC Consulting Engineers, P.C. 815 West Main - Oklahoma City, OK 73106 PH: 405-232-7715 Fax: 405-232-7859 KANSAS CERTIFICATE OF AUTHORIZATION NO. E-335 EXP. Dec. 31, 2011			
No.	Revision	By	Date
1	SMC review comments	MDS	03/04/11
2	Addendum #1 - City review comments	MDS	08/26/11
DATE: 04/20/11		SCALE:	SHEET NO.
DRAWN BY: MDS		NTS	C-9.0
PROJECT NO.: 4936.30		ENGINEER: TERENCE L. HAYNES, P.E. #14583	