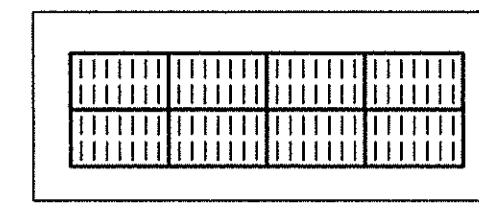


**GENERAL NOTE FOR INLET GRATE:**

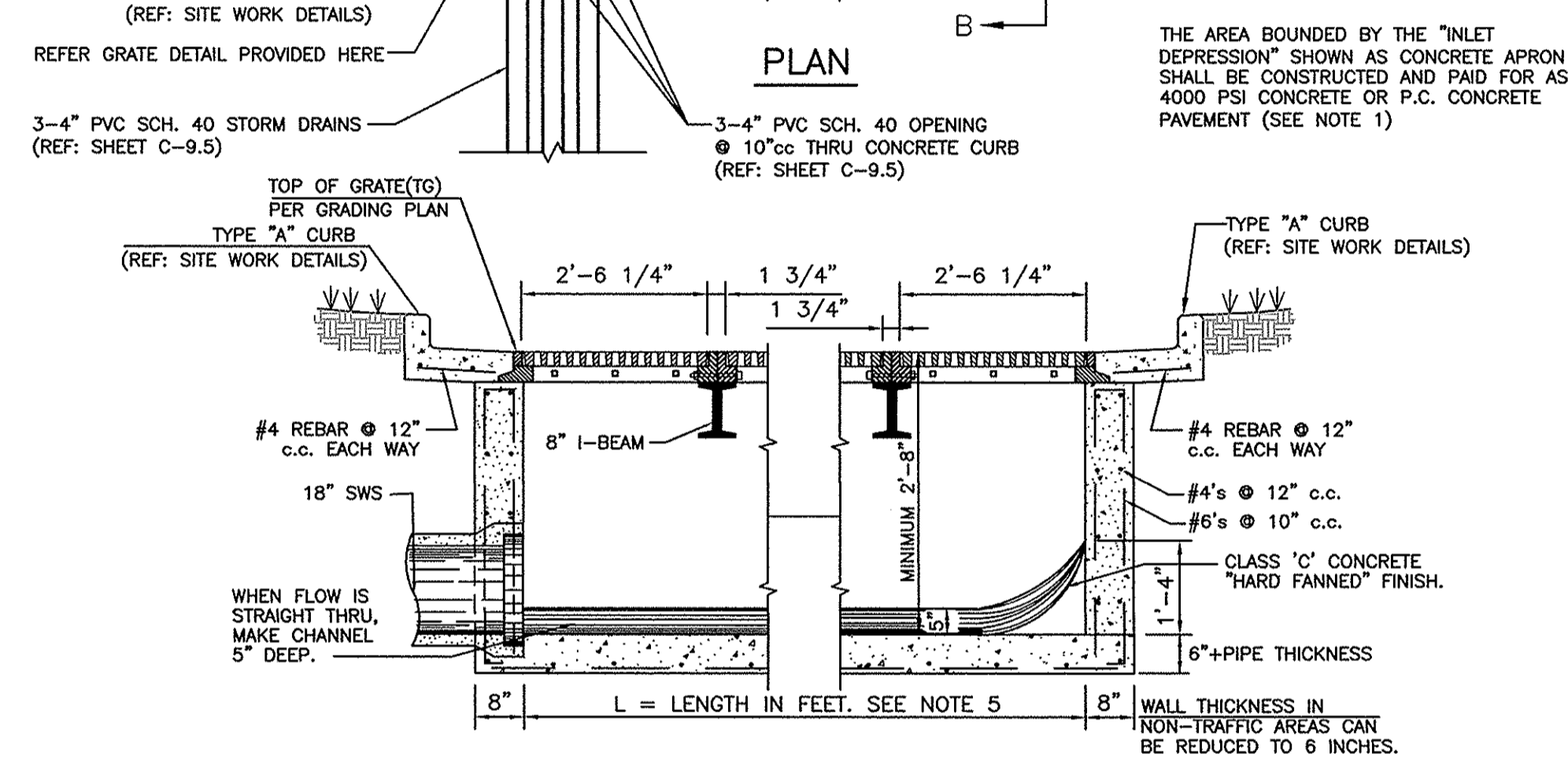
THESE GRATES ARE CUSTOM DESIGN TO MEET LATEST WAL-MART SPECIFICATION SECTION 02630, PART 2.2. CONTRACTOR SHALL CALL NEENAH FOUNDRY OR EAST JORDAN FOUNDRY TO ORDER THESE GRATES. ADDITIONAL AMOUNT OF TIME MAY BE REQUIRED TO DELIVER THESE GRATES AS SUGGESTED BY THE MANUFACTURER'S REPRESENTATIVE.



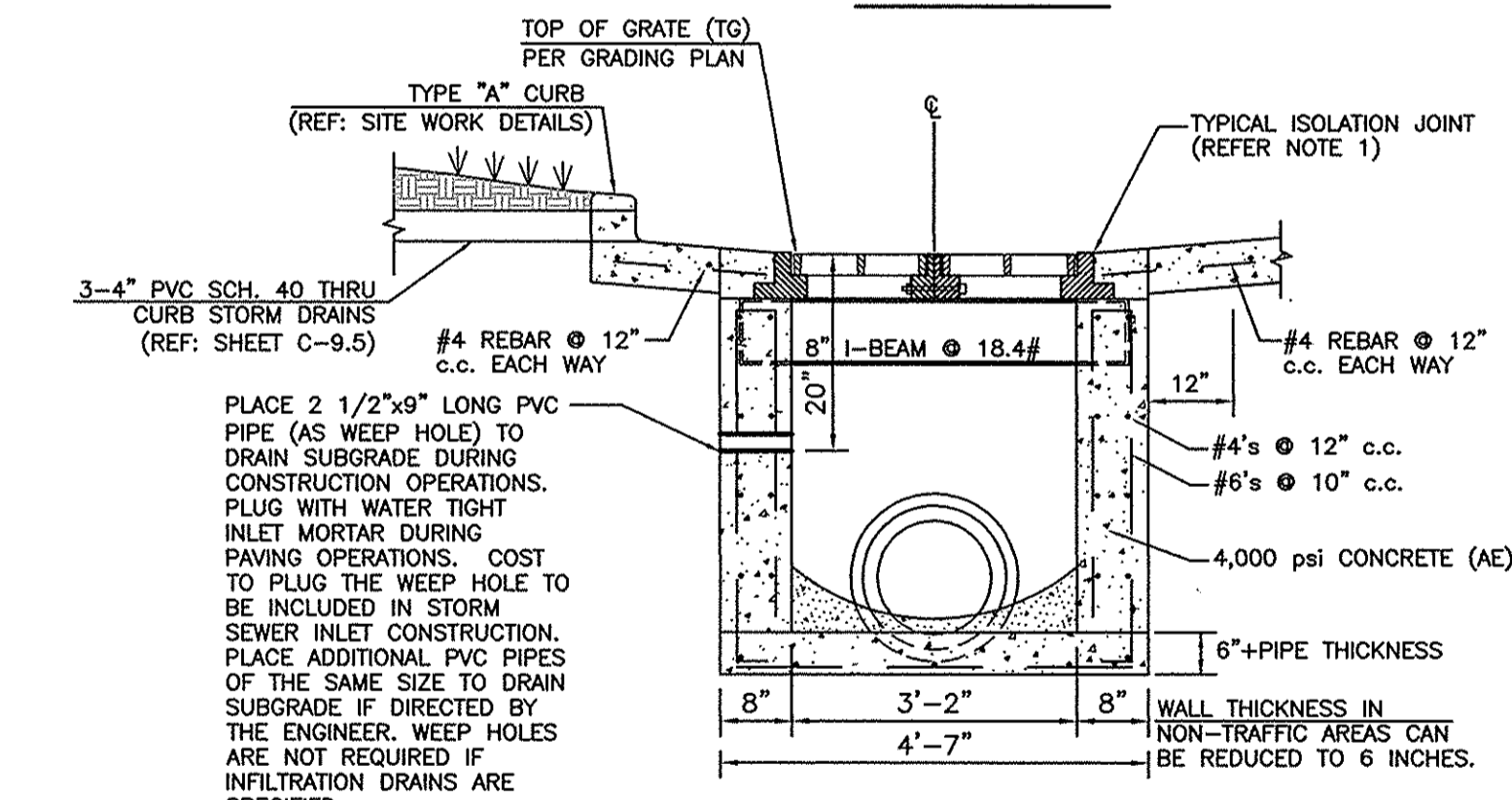
**GRATE & FRAME LAYOUT**  
N.T.S.



**INLET FRAME TYPES**  
N.T.S.

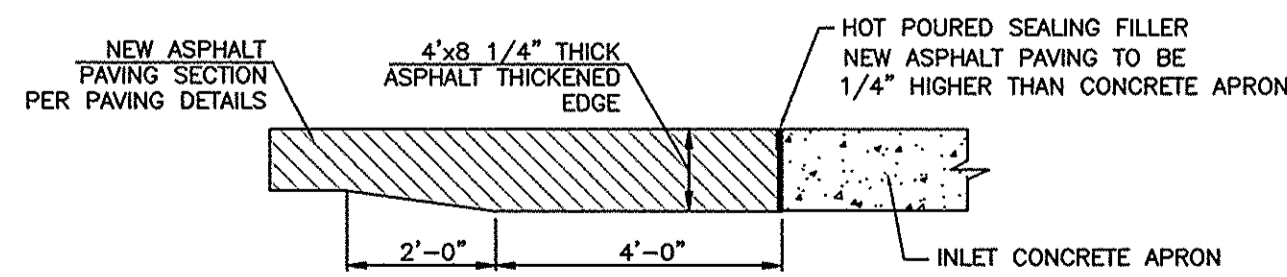


**SEC. A-A**



**SEC. B-B**

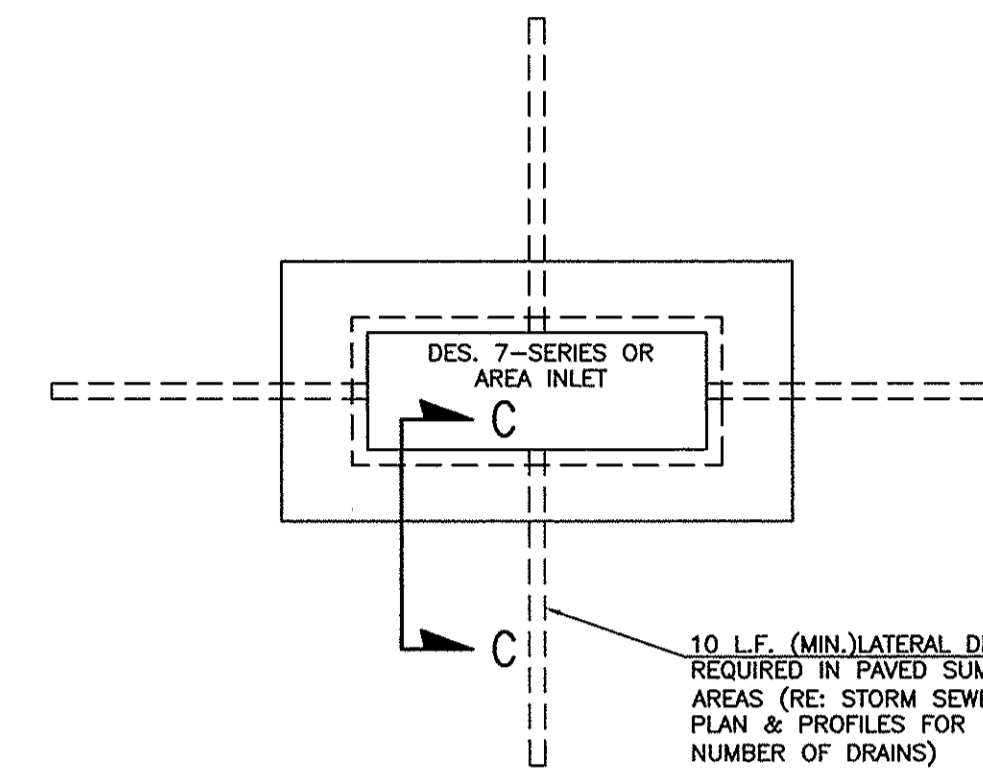
**DESIGN 7-N SERIES INLET DETAIL**  
N.T.S.



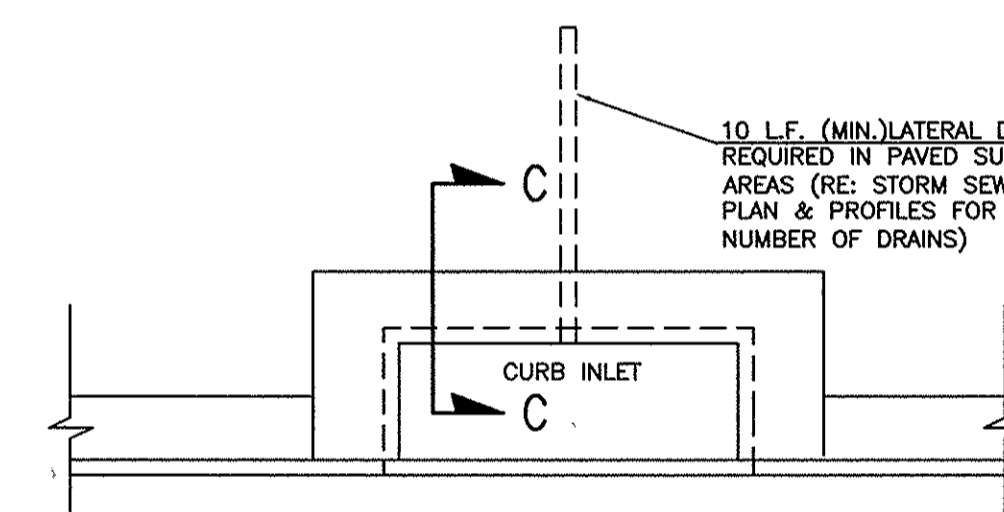
**PAVEMENT-THICKENED EDGE DETAIL FOR NEW ASPHALT PAVING**  
N.T.S.

**GENERAL NOTES - DES. 7-N SERIES STORM SEWER INLET**

- 1-a. WHEN INLET IS BUILT IN NEW CONCRETE PAVEMENT, THE INLET CONCRETE APRON SHALL BE MONOLITHIC WITH NEW CONCRETE PAVEMENT AND SHALL CONFORM TO PLANS AND SPECIFICATIONS THEREOF. THE SAW CUT LAYOUT FOR INLET CONCRETE APRON SHALL MATCH WITH THE MONOLITHIC CONCRETE PAVING. PROVIDE 2-#4, 24\"/>
- 1-b. WHEN INLET IS BUILT IN NEW ASPHALT PAVEMENT, THE INLET CONCRETE APRON SHALL FLUSH WITH NEW ASPHALT PAVEMENT. THE NEW ASPHALT PAVEMENT SHALL BE 1/4\"/>
- 1-c. WHEN INLET IS BUILT IN EXISTING CONCRETE OR ASPHALT PAVEMENT THE INLET CONCRETE APRON SHALL CONFORM TO NOTE 1-b.
2. CAST IRON STEPS SHALL BE PLACED IN ALL INLETS 3' OR MORE IN DEPTH IN CONFORMITY WITH STANDARD OSHA GUIDELINES.
3. GRATINGS TO BE USED IN THIS STRUCTURE WILL BE SHOWN ON THE PLANS OR DESIGNATED IN DETAILS.
4. BASIS OF PAYMENT FOR INLETS SHALL BE LUMP SUM INCLUDING REMOVAL AND REPLACEMENT OF EXISTING PAVEMENT.
5.  $L = (2.67 \times N) - 0.15$  IN WHICH N= THE NUMBER OF DOUBLE GRATINGS.  
FOR DES. 7-0 INLET, N=1  
FOR DES. 7-2 INLET, N=2  
FOR DES. 7-3 INLET, N=3  
FOR DES. 7-4 INLET, N=4
6. FOR INLET WITH MULTIPLE DOUBLE GRATINGS, CONTRACTOR SHALL USE TYPE \"B\" FRAME FOR LEFT AND RIGHT ASSEMBLY AND TYPE \"C\" FOR ADDITIONAL GRATINGS AS PER DETAIL SHOWN HERE. FRAME INSTALLATION SHALL BE PER MANUFACTURER'S RECOMMENDATIONS.
7. CONCRETE SHALL BE AIR ENTRAINED PER PROJECT SPECS.
8. STORM SEWER STRUCTURES (JUNCTION BOX/MANHOLE/INLETS) SHALL BE PRE-CAST IN ACCORDANCE WITH ASTM STANDARDS. SUBMITTALS FOR PRE-CAST STRUCTURES WITH A WALL THICKNESS OTHER THAN SHOWN HERE SHALL BE SUPPORTED BY ENGINEER'S APPROVED SHOP DRAWINGS. NO BRICK CONSTRUCTION IS ALLOWED.
9. A MINIMUM OF 8\"/>



**INFILTRATION DRAINS AT AREA INLET**  
N.T.S.

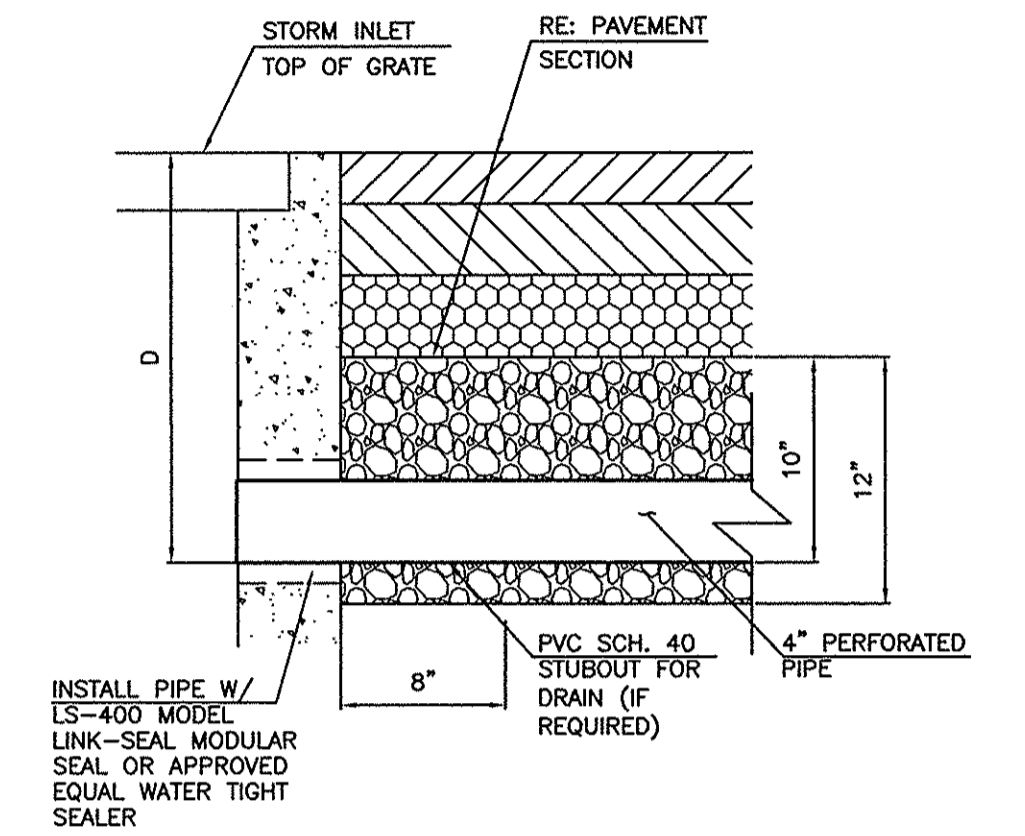


**INFILTRATION DRAINS AT CURB INLET**  
N.T.S.

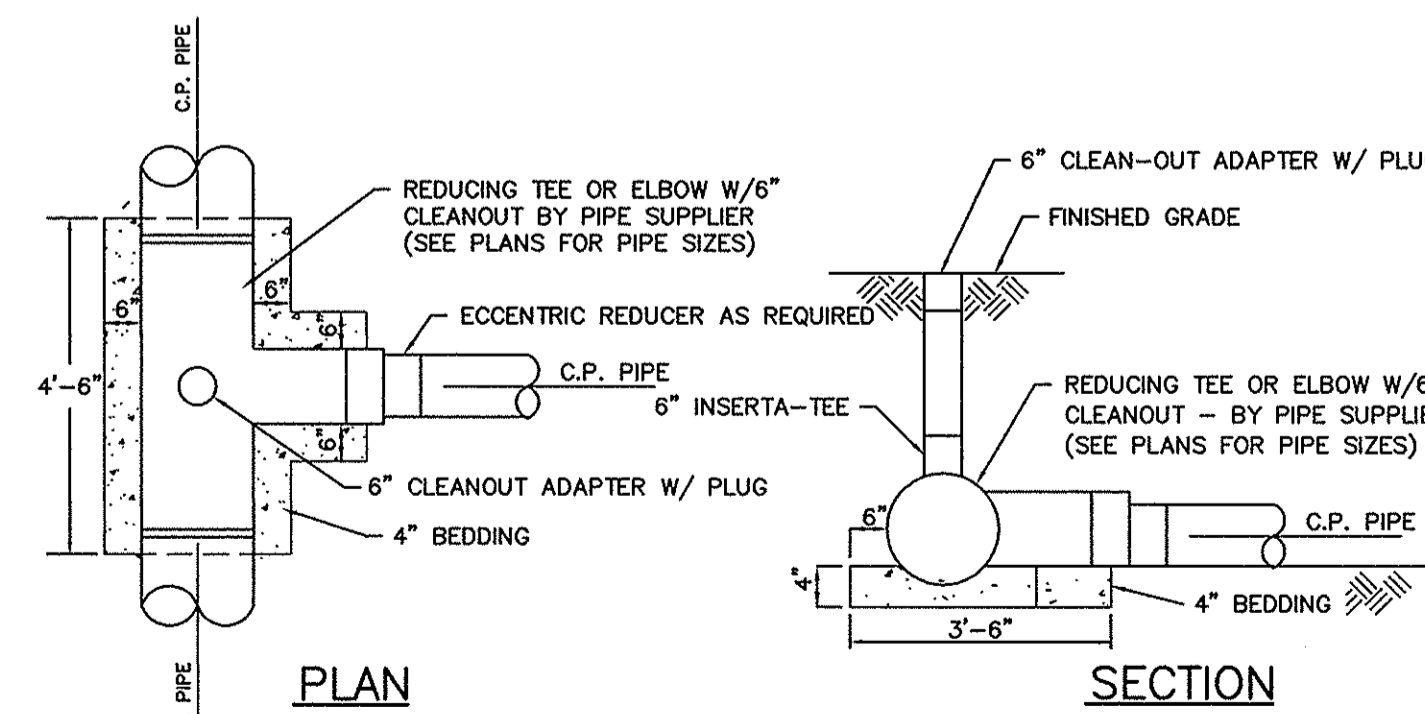
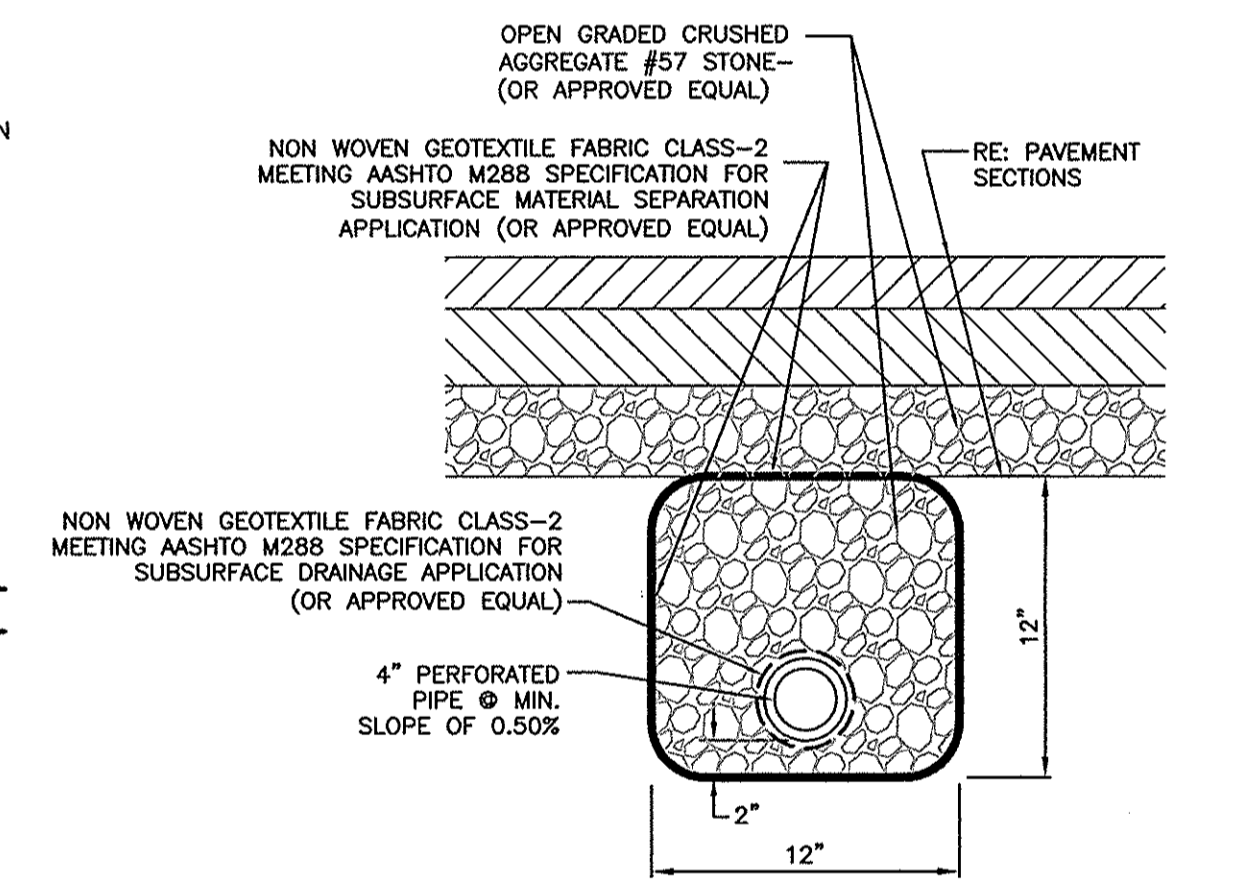
**GENERAL NOTES - INFILTRATION DRAINS**

1. INFILTRATION DRAINS IN LANDSCAPE AREAS NOT REQUIRED.
2. STORM SEWER SYSTEM SHALL BE INSTALLED PRIOR TO THE INSTALLATION OF INFILTRATION DRAINS. CONTRACTOR SHALL ESTABLISHED LAYOUT OF THE INFILTRATION DRAINS WITHOUT CAUSING ANY CONFLICT WITH THE PROPOSED STORM SEWER SYSTEM AND OTHER UNDERGROUND UTILITIES. INFILTRATION DRAINS CAN BE INSTALLED NEXT TO THE STORM SEWER ENTERING/LEAVING THE INLET.

**INFILTRATION DRAIN DETAIL**  
N.T.S.



**SECTION C-C**  
N.T.S.



**PLAN**

**SECTION**

**CPP JUNCTION BOX DETAIL**  
N.T.S.

**STORM SEWER DETAILS**

WALMART MARKET #5873-01

13TH STREET & NORTH OLIVER AVENUE  
WICHITA, KANSAS

SMC Consulting Engineers, P.C.  
815 West Main - Oklahoma City, OK 73106  
PH: 405-232-7715 Fax: 405-232-7859



KANSAS CERTIFICATE OF AUTHORIZATION NO. E-335 EXP. DEC. 2011

No.	Revision	By	Date
1	SMC review comments	MDS	07/20/11

DATE: 05/04/11	SCALE: NTS	SHEET NO. C-9.10
DRAWN BY: MDS	PROJECT NO.: 4936.30	ENGINEER: TERENCE L. HAYNES, P.E. #14583

