

FINAL PLAT

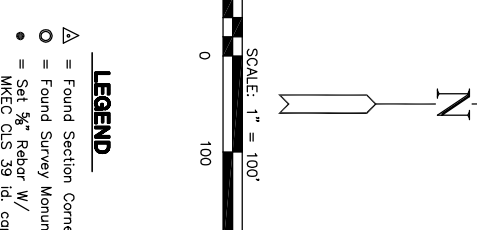
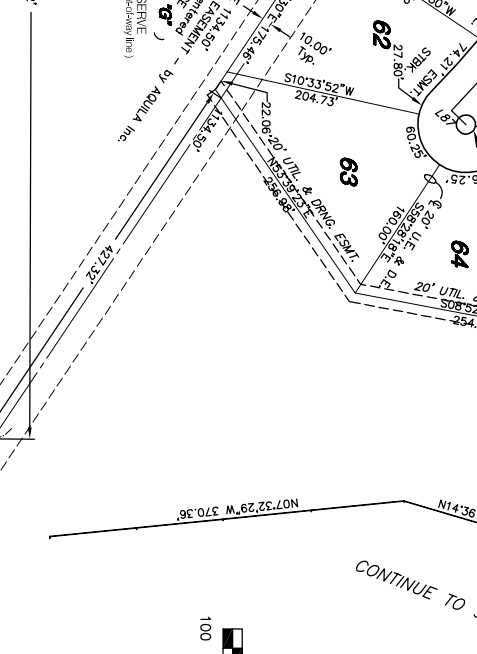
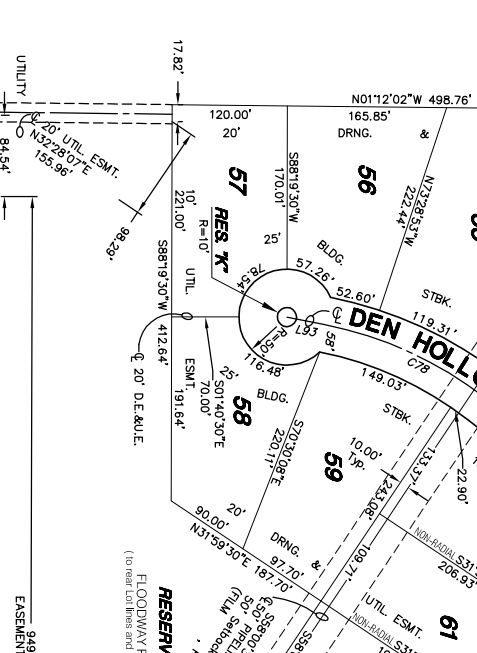
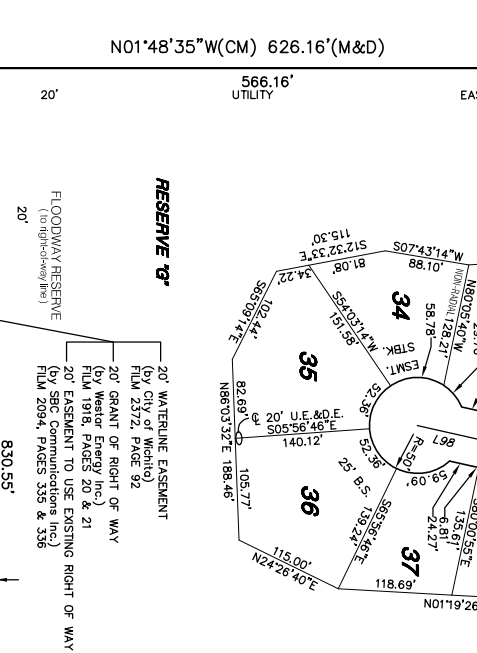
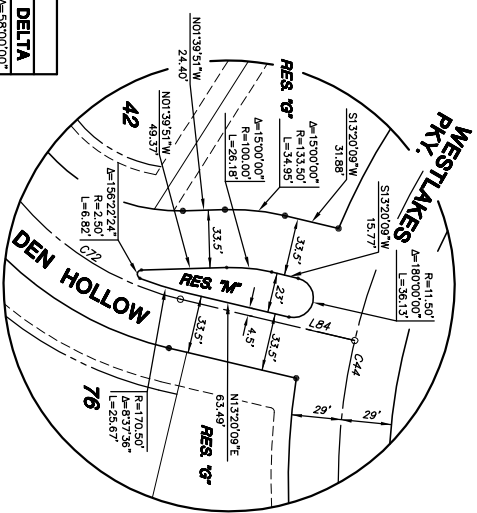
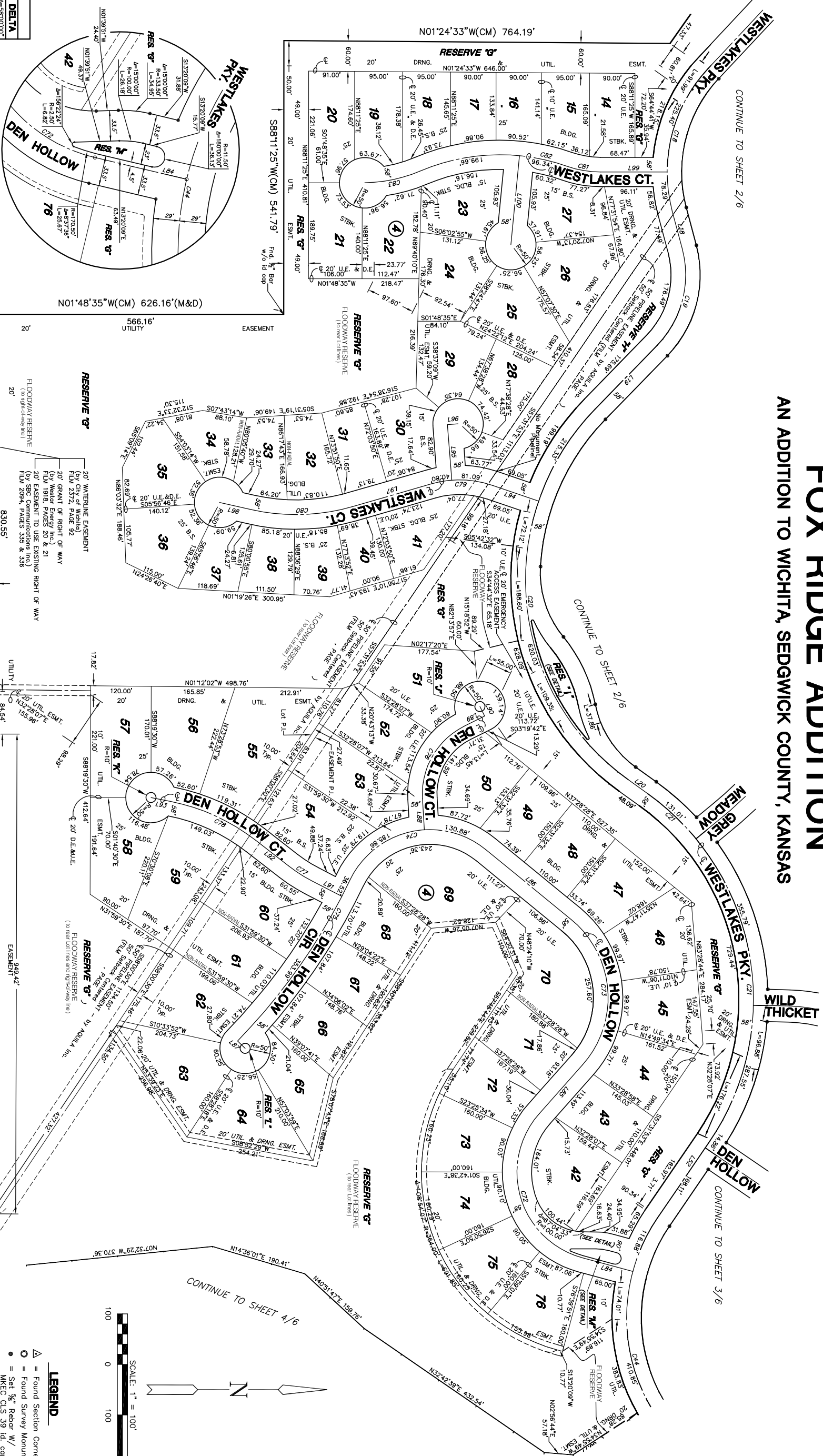
FOX RIDGE ADDITION

AN ADDITION TO WICHITA, SEDGWICK COUNTY, KANSAS

LOT	BLOCK	ELEVATION (GTT DATA)	ELEVATION (NGVD)
21	4	164.9	1352.3
22	4	164.9	1352.3
23	4	164.9	1352.3
24	4	164.9	1352.3
29	4	164.9	1352.3
30	4	164.9	1352.3
31	4	164.9	1352.3
32	4	164.9	1352.3
33	4	164.9	1352.3
34	4	164.9	1352.3
35	4	164.9	1352.3
36	4	164.9	1352.3
37	4	164.9	1352.3
38	4	164.9	1352.3
39	4	164.9	1352.3
40	4	164.9	1352.3
41	4	164.9	1352.3
42	4	164.9	1352.3
43	4	164.9	1352.3
44	4	164.9	1352.3
45	4	164.9	1352.3
46	4	164.9	1352.3
47	4	164.9	1352.3
48	4	164.9	1352.3
49	4	164.9	1352.3
50	4	164.9	1352.3
51	4	164.9	1352.3
52	4	164.9	1352.3
53	4	164.9	1352.3
54	4	164.9	1352.3
55	4	164.9	1352.3
56	4	164.9	1352.3
57	4	164.9	1352.3
58	4	164.9	1352.3
59	4	164.9	1352.3
60	4	164.9	1352.3
61	4	164.9	1352.3
62	4	164.9	1352.3
63	4	164.9	1352.3
64	4	164.9	1352.3
65	4	164.9	1352.3
66	4	164.9	1352.3
67	4	164.9	1352.3
68	4	164.9	1352.3
69	4	164.9	1352.3
70	4	164.9	1352.3
71	4	164.9	1352.3
72	4	164.9	1352.3
73	4	164.9	1352.3
74	4	164.9	1352.3
75	4	164.9	1352.3
76	4	164.9	1352.3

LINE	LENGTH	BEARING
L18	77.49'	N75°17'00"E
L19	175.69'	S47°34'48"E
L20	48.09'	S33°24'08"W
L21	108.82'	S27°31'53"E
L22	108.82'	N50°13'55"W
L23	139.22'	N50°13'55"W
L24	218.13'	S37°28'28"W
L25	21.00'	S42°25'03"W
L26	61.62'	N84°37'23"E
L27	45.00'	S28°19'48"E
L28	21.00'	N61°40'15"E
L29	66.60'	N25°30'57"E
L30	82.60'	N36°03'40"E
L31	39.99'	N09°23'39"E
L32	97.23'	S16°38'56"W
L33	21.00'	N57°54'54"W
L34	163.91'	S17°56'10"E
L35	65.00'	S17°56'10"E
L36	132.14'	S01°45'55"E
L37	176.79'	N86°13'56"W

CURVE	LENGTH	RADIUS	DELTA
C18	303.60'	300.00'	Δ=59°00'00"
C19	206.43'	200.00'	Δ=59°08'12"
C20	833.35'	483.00'	Δ=98°41'06"
C21	774.35'	500.00'	Δ=98°44'02"
C22	589.66'	350.00'	Δ=96°31'44"
C23	353.64'	175.00'	Δ=116°26'16"
C24	322.19'	200.00'	Δ=92°17'57"
C25	316.74'	175.00'	Δ=103°42'08"
C26	390.51'	200.00'	Δ=18°38'44"
C27	173.53'	150.00'	Δ=67°02'51"
C28	53.22'	200.00'	Δ=103°23'51"
C29	139.80'	200.00'	Δ=42°55'08"
C30	201.27'	400.00'	Δ=28°48'42"
C31	67.48'	200.00'	Δ=191°57'57"
C32	296.00'	400.00'	Δ=42°23'56"
C33	114.37'	300.00'	Δ=21°50'33"



SW Corner, Sec. 32,
T26S, R1W, 6th P.M.
Fnd. 3/4" Bar w/ 1/2"
Alum. Cap stamped
Sedgwick County

SW Corner, Sec. 32,
T26S, R1W, 6th P.M.
Fnd. 3/4" Bar w/ 1/2"
Alum. Cap stamped
Sedgwick County

There shall be no parking on or
along Westlakes Parkway.

NOTE
There shall be no parking on or
along Westlakes Parkway.

