

GENERAL NOTES

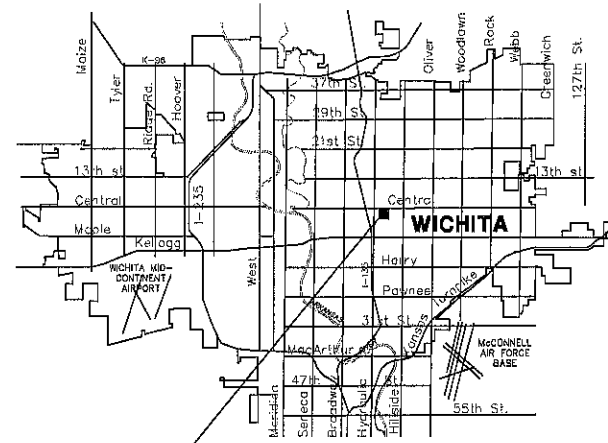
- ALL ELEVATIONS SHOWN ARE BASED ON MEAN SEA LEVEL DATUM.
- INTERURBAN TRAFFIC GENERATED OUTSIDE THE PROJECT AREA IS NOT TO BE CARRIED THROUGH CONSTRUCTION. LOCAL RESIDENTIAL TRAFFIC GENERATED WITHIN THE PROJECT AREA IS TO BE CARRIED THROUGH CONSTRUCTION AS FURTHER PROMULGATED BY PROJECT SPECIAL PROVISIONS.
- UTILITY SERVICE LINES, POLES, VALVE BOXES, METERS, ECT. ARE TO BE ADJUSTED AS NECESSARY BY OTHERS PRIOR TO CONSTRUCTION UNLESS THE PLANS SPECIFICALLY CALL FOR THEIR ADJUSTMENT BY THE CONTRACTOR OR UNLESS THE PLANS SPECIFICALLY IDENTIFY A UTILITY TO BE ADJUSTED BY ITS OWNER DURING CONSTRUCTION. EXISTING UTILITIES AND THEIR LOCATION, AS SHOWN ON THE PLANS, REPRESENT THE BEST INFORMATION OBTAINABLE FOR DESIGN. THE PLAN LOCATIONS ARE NOT GUARANTEED AND ADDITIONAL UTILITIES MAY ALSO BE ENCOUNTERED. THE CONTRACTOR WILL BE REQUIRED TO WORK AROUND EXISTING UTILITIES WITHIN THE RIGHT-OF-WAY WHICH DO NOT CONFLICT WITH PROPOSED CONSTRUCTION.
- RUBBLE FROM THE REMOVAL OF MISCELLANEOUS STRUCTURES AND EXCESS EXCAVATION WHICH IS TO BE WASTED SHALL BE DISPOSED OF ON SITES TO BE PROVIDED BY THE CONTRACTOR. THESE SITES SHALL BE APPROVED BY THE ENGINEER AS TO SUITABILITY, APPEARANCE, AND SITE LOCATION. LOCATIONS, THAT IN THE OPINION OF THE ENGINEER, WILL LEAVE AN UNSIGHTLY APPEARANCE WILL NOT BE APPROVED.
- ALL DISPOSAL SITES MUST BE APPROVED BY THE KANSAS DEPARTMENT OF HEALTH AND ENVIRONMENT. MATERIAL EITHER STOCKPILED OR DISPOSED OF IN A FLOODPLAIN WOULD REQUIRE A KANSAS STATE BOARD OF AGRICULTURE PERMIT. ANY MATERIALS DUMPED IN WATERS OF THE UNITED STATE OR WETLANDS IS SUBJECT TO U.S. CORPS OF ENGINEERS PERMITTING REGULATIONS. ANY MATERIAL BURIED OR STOCKPILED BEYOND APPROVED CONSTRUCTION LIMITS WOULD REQUIRE ADDITIONAL ARCHAEOLOGICAL INVESTIGATIONS UNLESS BURIED IN A PREVIOUSLY APPROVED BORROW LOCATION.
- CONTRACTOR WILL BE REQUIRED TO PROVIDE A MINIMUM ADVANCE NOTICE OF FORTY-EIGHT(48)HOURS TO UTILITY COMPANIES PRIOR TO STARTING ANY EXCAVATION AS FOLLOWS:
 KANSAS ONE CALL 1-800-344-7233 OR 687-2470(LOCAL WICHITA)
 COX COMMUNICATIONS 262-4270 OR 263-2061
 AT&T 1-800-870-8390
 KANSAS GAS SERVICE 1-888-482-4950
 WESTAR 1-800-383-1183
 CITY OF WICHITA(WATER & SEWER) 268-4555
- THE CONTRACTOR MUST NOTIFY THE FOLLOWING IN CASE OF AN EMERGENCY:
 THE CONTRACTOR SHALL NOTIFY PIPELINE COMPANIES AT LEAST 24 HOURS IN ADVANCE OF ANY WORK BEING PERFORMED ACROSS AND/OR ADJACENT TO PIPELINES.
- MAILBOXES WITHIN THE LIMITS OF THE PROJECT SHALL BE REMOVED AND REPLACED BY THE CONTRACTOR AS APPROVED BY THE ENGINEER. CONTRACTOR WILL BE REQUIRED TO MAKE SATISFACTORY PROVISIONS FOR MAIL DELIVERY TO PROPERTIES AFFECTED BY THIS PROJECT DURING CONSTRUCTION.
- TREES AND SHRUBS IN PUBLIC RIGHT-OF-WAY WHICH ARE IN DIRECT CONFLICT WITH PROPOSED NEW CONSTRUCTION SHALL BE REMOVED BY THE CONTRACTOR WITH THE ENGINEERS APPROVAL. TREES AND SHRUBS WHICH ARE NOT IN DIRECT CONFLICT WITH PROPOSED NEW CONSTRUCTION SHALL BE SAVED AND PROTECTED FROM DAMAGE.
- THE CONTRACTOR SHALL BE RESPONSIBLE FOR PRESERVING PROPERTY IRONS. THE CONTRACTOR WILL BE REQUIRED TO REESTABLISH ANY PROPERTY IRONS WHICH ARE DAMAGED OR DESTROYED BY HIS CONSTRUCTION OPERATIONS. SUCH IRONS SHALL BE REESTABLISHED BY A LICENSED LAND SURVEYOR IN ACCORDANCE WITH STATE LAWS.
- THE CONTRACTOR SHALL GIVE ALL PROPERTY OWNERS AND/OR TENANTS OF DEVELOPED PROPERTY DIRECTLY ABUTTING THE CONSTRUCTION OF THIS PROJECT A MINIMUM OF TEN(10) DAYS ADVANCE NOTICE PRIOR TO START OF CONSTRUCTION.
- THE CONTRACTOR SHALL ADJUST WATER VALVE BOXES, WATER METER BOXES AND FIRE HYDRANTS AS NOTED IN THE PLANS AND AS DIRECTED BY THE ENGINEER. MATERIALS, EQUIPMENT, AND LABOR REQUIRED FOR THE ADJUSTMENT OF WATER METER AND VALVE BOXES AND FIRE HYDRANTS WILL NOT BE PAID FOR DIRECTLY BUT WILL BE CONSIDERED SUBSIDIARY TO OTHER ITEMS OF WORK IN THE CONTRACT. THE WATER DEPARTMENT SHALL FIELD LOCATE WATER VALVES ONE TIME DURING CONSTRUCTION WHEN REQUESTED BY THE CONTRACTOR. IT SHALL BE THE CONTRACTORS RESPONSIBILITY TO PRESERVE SUCH FIELD LOCATIONS DURING THE CONSTRUCTION PROCESS. WATER VALVES, WATER VALVE BOXES, OR FIRE HYDRANTS DAMAGED DURING CONSTRUCTION SHALL BE REPAIRED BY THE CONTRACTOR AT HIS OWN EXPENSE.
- THE CONTRACTOR MUST EXAMINE THE CONSTRUCTION SITE PRIOR TO BIDDING AND BE SATISFIED AS TO THE WORK SHOWN FOR COMPLETION. AFTER BIDS HAVE BEEN RECEIVED, THE CONTRACTOR SHALL NOT ASSERT THAT THERE WAS A MISUNDERSTANDING OF THE QUANTITIES OF WORK OR OF THE NATURE FOR THE WORK TO BE COMPLETED.
- CONTRACTOR SHALL NOT START WORK ON THE PROJECT UNTIL THE PROJECT INSPECTOR IS ASSIGNED TO THE PROJECT AND IS PRESENT ON THE SITE. ANY WORK DONE WITHOUT INSPECTION WILL BE REQUIRED TO BE UNCOVERED FOR INSPECTION.
- THE CONTRACTOR SHALL FERTILIZE, SEED, AND MULCH ALL AREAS WHICH ARE DISTURBED AS A RESULT OF THIS PROJECT. ALL COST TO BE SUBSIDIARY TO "SITE RESTORATION".
- THE CONTRACTOR SHALL PROVIDE TRAFFIC CONTROL IN ACCORDANCE WITH THE CURRENT ADDITION OF THE MANUAL OF UNIFORM TRAFFIC CONTROL DEVICES (MUTCD) TO ENSURE A SAFE WORK ZONE FOR THE TRAVELING PUBLIC.
- PAVEMENT REMOVAL AND/OR REPLACEMENT WILL BE MEASURED AND PAID FOR ON THE SQUARE FOOT BASIS REGARDLESS OF PAVEMENT TYPE AND/OR PAVEMENT THICKNESS. MINIMUM LIMITS OF SUCH PAVEMENT REMOVAL AND REPLACEMENT SHALL BE ONE FOOT BEYOND THE LIMITS OF EXCAVATION MADE FOR THE SEWER OR THE STRUCTURE, EXCEPT WHEN SUCH LIMITS OF REMOVAL ARE WITHIN THREE(3) FEET OF AN EXISTING JOINT. REMOVAL AND REPLACEMENT OF EXISTING PAVEMENT SHALL CONFORM TO THE APPLICABLE SECTIONS OF THE CITY OF WICHITA STANDARD SPECIFICATIONS.
- DRIVEWAY WIDTHS AND LOCATIONS ARE TENTATIVE. CONTRACTOR WILL BE REQUIRED TO OBTAIN PROPERLY EXECUTED DRIVEWAY REQUEST FORMS SIGNED BY THE PROPERTY OWNER OR HIS AUTHORIZED REPRESENTATIVE VERIFYING SUCH DRIVEWAY WIDTHS AND LOCATIONS. SUCH FORMS SHALL BE SUBMITTED TO THE ENGINEER FOR HIS REVIEW AND APPROVAL.
- ALL DRIVEWAY ENTRANCE AND CROSS ROAD PIPE WITHIN THE PROJECT LIMITS SHALL BE REMOVED BY THE CONTRACTOR UNLESS OTHERWISE NOTED ON THE PLANS. REMOVAL OF SUCH PIPES SHALL CONFORM TO THE APPLICABLE SECTION OF THE STANDARD SPECIFICATIONS.
- ALL FENCE LOCATED WITHIN THE RIGHT-OF-WAY WILL BE REMOVED AND SALVAGED BY THE CONTRACTOR. ALL MATERIALS SHALL BE SALVAGED FOR THE PROPERTY OWNER. FENCE OUTSIDE THE RIGHT-OF-WAY WHICH IS REMOVED FOR CONSTRUCTION SHALL BE REPAIRED IN A CONDITION EQUAL TO OR BETTER THAN THE ORIGINAL AT NO ADDITIONAL COST TO THE OWNER UNLESS OTHERWISE SPECIFIED ON THE PLANS. MATERIALS NOT SALVAGED BY THE PROPERTY OWNER SHALL BE DISPOSED OF BY THE CONTRACTOR.
- CONTRACTOR SHALL GIVE PROPERTY OWNERS ABUTTING THIS PROJECT, WHOSE YARDS WILL BE LOWER THAN THE NEW FINISHED GRADE ELEVATION AT THE RIGHT-OF-WAY LINE, AN OPPORTUNITY TO UTILIZE EXCESS EXCAVATED MATERIAL FROM THE PROJECT TO REGRADE THEIR YARDS TO DRAIN TO THE NEW PAVEMENT. CONTRACTOR WILL BE REQUIRED TO DUMP AND SPREAD THE EXCESS MATERIAL AS REQUIRED BY THE SPECIFICATIONS WHEN REQUESTED BY THE PROPERTY OWNER. THE CONTRACTOR SHALL ASCERTAIN THAT A DIRT ORDER HAS BEEN PROPERLY EXECUTED BY THE PROPERTY OWNER BEFORE ANY SUCH EXCESS MATERIAL IS DELIVERED TO SUCH PROPERTIES.
- LIMITS OF EARTHWORK SHALL MATCH EXISTING GROUND ELEVATIONS AT CONTRACTOR. THE RIGHT-OF-WAY LINE UNLESS OTHERWISE NOTED ON THE PLANS WITH A NEW FINISHED GRADE ELEVATION. WHEN A NEW FINISHED GRADE ELEVATION IS SHOWN, THE EARTHWORK SHALL EXTEND ONE FOOT BEYOND THE RIGHT-OF-WAY LINE AND THEN SLOPED UP OR DOWN USING PERMISSIBLE SLOPES TO MATCH EXISTING GROUND SURFACE.
- THE CONTRACTOR SHALL ADJUST SANITARY SEWER MANHOLES AND STORM SEWER MANHOLES FOR ELEVATION AND SLOPE AS REQUIRED TO FIT PROPOSED FINISH GRADES.
- THE CITY OF WICHITA'S DEPARTMENT OF OPERATIONS AND MAINTENANCE WILL REMOVE AND REPLACE EXISTING STREET SIGNING AT THE BEGINNING AND END OF CONSTRUCTION. THE CONTRACTOR SHALL COORDINATE HIS ACTIVITIES WITH THE DEPARTMENT OF OPERATIONS AND MAINTENANCE FOR TEMPORARY TRAFFIC SIGNALIZATION AND REMOVAL OF INSTALLATION OF STREET SIGNING.
- ALL CONSTRUCTION AND MATERIALS, UNLESS OTHERWISE NOTED, TO COMPLY WITH CITY OF WICHITA SPECIFICATIONS AND STANDARDS.
- THE COST OF CONCRETE DRIVEWAY REMOVAL SHALL INCLUDE A SAW CUT OF A MINIMUM DEPTH OF ONE FOURTH OF THE PAVEMENT THICKNESS. THE SAW CUT SHALL BE AT THE PROPERTY LINE OR THE NEAREST JOINT. THE EXACT LOCATION SHALL BE DETERMINED BY THE FIELD ENGINEER.

ALLEY PAVING IMPROVEMENTS

TO SERVE

INFUSION PHARMACY, 1909 E. CENTRAL
 LOT 2,4,6,8,10 & 12, ON BERNICE, NOW
 MINNESOTA AVENUE, IN BUTLER AND
 FISHER'S SECOND ADDITION,
 WICHITA, SEDGWICK COUNTY, KANSAS
 CITY OF WICHITA PRIVATE PROJECT NO.:
 212-PPP (O.C.A. NO. 607879),
 JAMES L. ARMOUR, P.E., CITY ENGINEER

MAY 2011



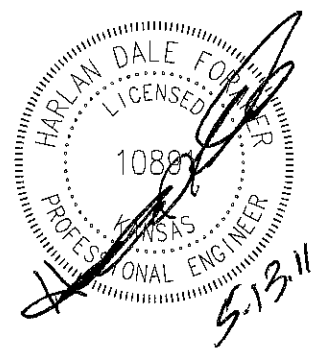
PROJECT LOCATION LOCATION MAP



APPROVED AS NOTED
 By CITY ENGINEER OF WICHITA

Sanitary Sewers _____
 Storm Sewers _____
 Driveway Approaches _____
 Water Mains _____
 Paving *Juianne Kellman 5-16-11*

NOTE TO CONTRACTOR
 INSPECTION AND TESTING FOR THIS PROJECT IS TO BE PROVIDED BY A LICENSED CONSULTING ENGINEERING FIRM UNDER CONTRACT WITH THE OWNER/DEVELOPER. SAID INSPECTION TO BE IN ACCORDANCE WITH THE CITY OF WICHITA STANDARD CONSTRUCTION ENGINEERING PRACTICES AND CERTIFIED BY A LICENSED PROFESSIONAL ENGINEER. NO WORK SHALL BE PERFORMED IN DEDICATED EASEMENTS OR THE PUBLIC RIGHT-OF-WAY BY THE CONTRACTOR WITHOUT SUCH INSPECTION NOR SHALL ANY WORK BE COMMENCED IN DEDICATED EASEMENTS OR PUBLIC RIGHT-OF-WAY WITHOUT WRITTEN AUTHORIZATION BY THE CITY ENGINEER.



PROJECT LOCATED IN THE
 N.W.1/4, SEC. 22, T.27S., R.1E.
 WICHITA, SEDGWICK COUNTY, KANSAS

REV.	DESCRIPTION	DATE

INFUSION PHARMACY
 1909 E. CENTRAL

ALLEY PAVING
 IMPROVEMENTS

WICHITA, KANSAS

CERTIFIED ENGINEERING DESIGN, P.A.
 CIVIL ENGINEERING SERVICES

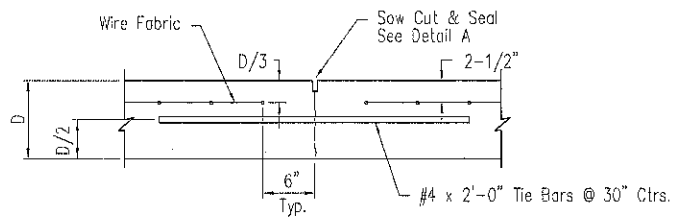
CED

1935 WEST MAPLE STREET
 WICHITA, KANSAS 67213
 PH.(316)262-8808 FAX.(316)262-1669

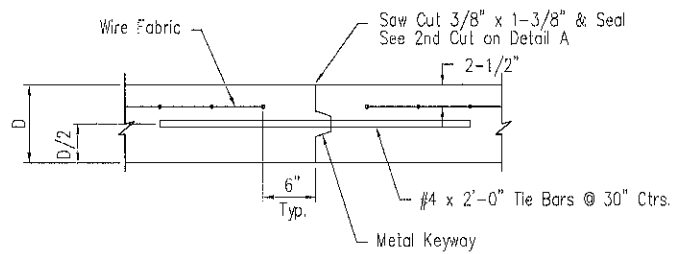
PROJECT NO.: 20111959
 ISSUE DATE: MAY 2011
 CONTACT: H FORAKER
 DRAWN BY: CC CHECKED BY: HDF

TITLE SHEET

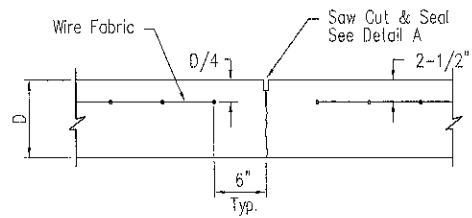
1 OF 5



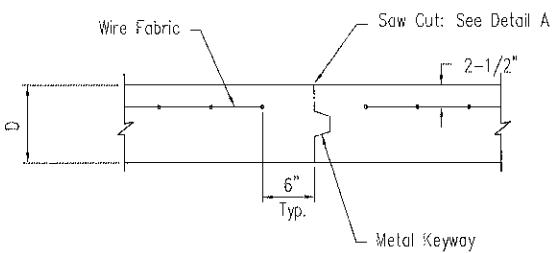
LONGITUDINAL JOINT DETAIL (L.J.)



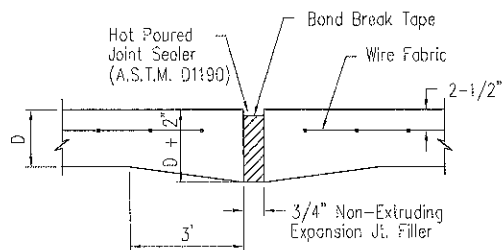
OPT. LONGITUDINAL JOINT DETAIL (L.J.)



CONTRACTION JOINT DETAIL (C.J.)

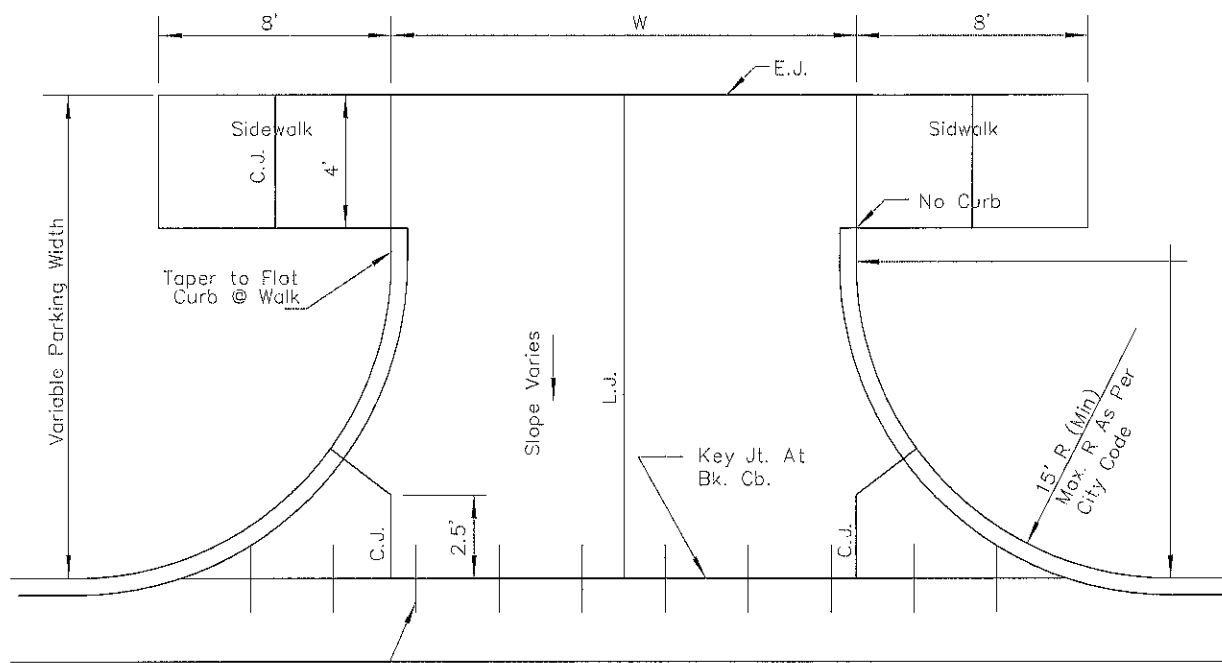


OPTIONAL CONTRACTION JOINT



EXPANSION (ISOLATION) JOINT

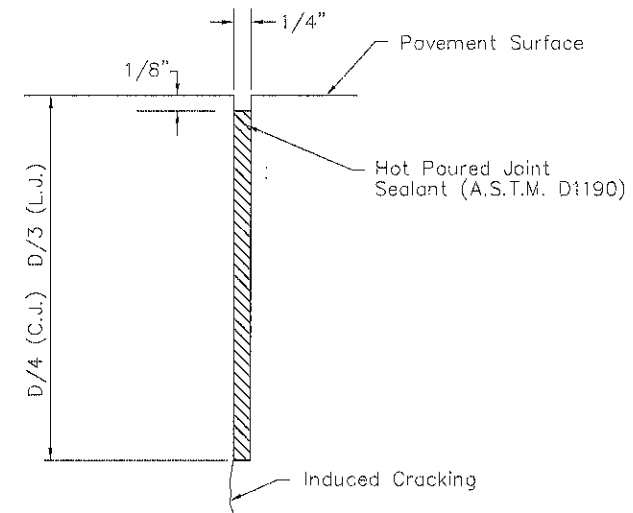
NOTE: Extra Thickness to be Subsidiary to Price of Square Yards Pavement



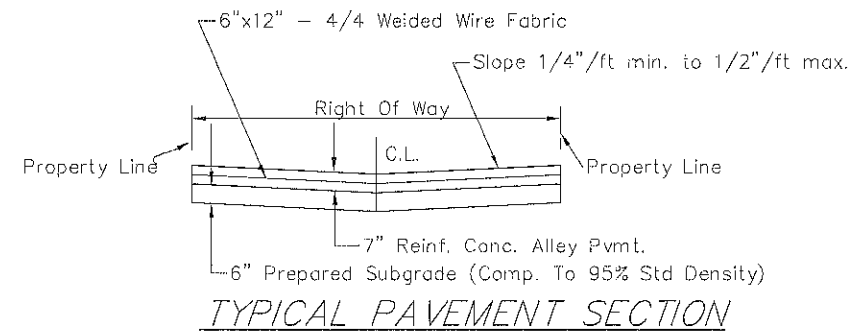
#4 Dowels 2' Long On 2.5' Ctrs.

Use Ramp-Type Approach when distance between fc. wk. & bk. cb. is 8'-0" or less. Where parking width is 8'-0" or less ramp shall be constructed full width.

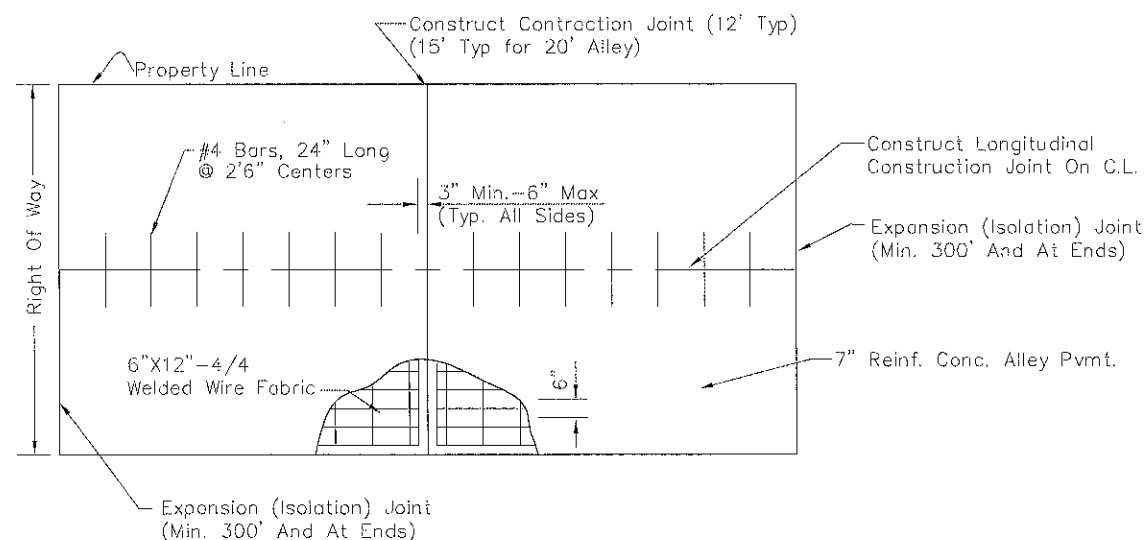
ALLEY APPROACH DETAIL



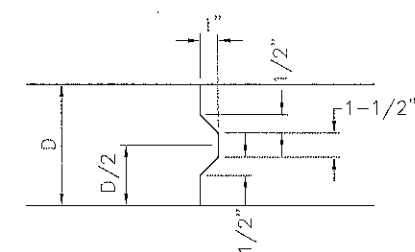
SAW JOINT DETAIL (Detail A)



TYPICAL PAVEMENT SECTION



SLAB REINFORCEMENT DETAIL



KEYWAY DETAIL



REINFORCED CONCRETE ALLEY PAVING

CITY ENGINEER JAMES L. ARMOUR, P.E., L.S.		DATE MM/YY	
PROJECT NUMBER XXX-XXXX	CCA NUMBER XXXXXX	DESIGN ABC	DRAWN DEF
CITY ENGINEER'S OFFICE CITY HALL - SEVENTH FLOOR 455 NORTH MAIN STREET WICHITA, KANSAS 67202-1620 (316) 268-4501 (316) 268-4114 FAX		SHEET X OF X	DEF

REV. 3-08-02, MCG
ALLEY PAVING.DWG

REV.	DESCRIPTION	DATE

INFUSION PHARMACY
1909 E. CENTRAL

ALLEY PAVING IMPROVEMENTS

WICHITA, KANSAS

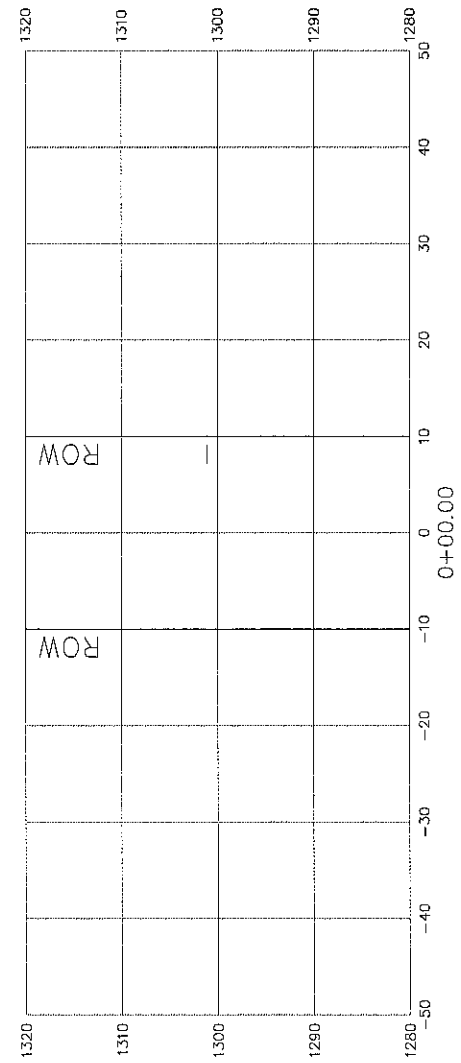
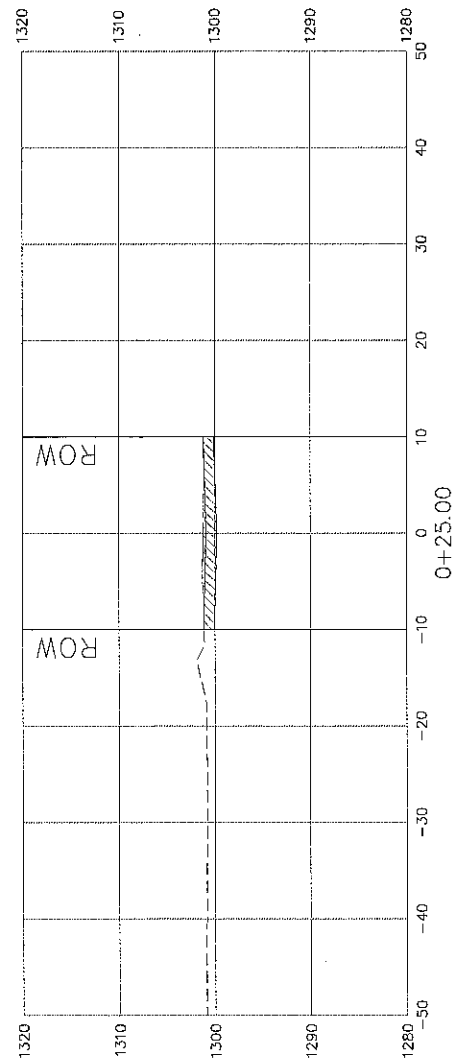
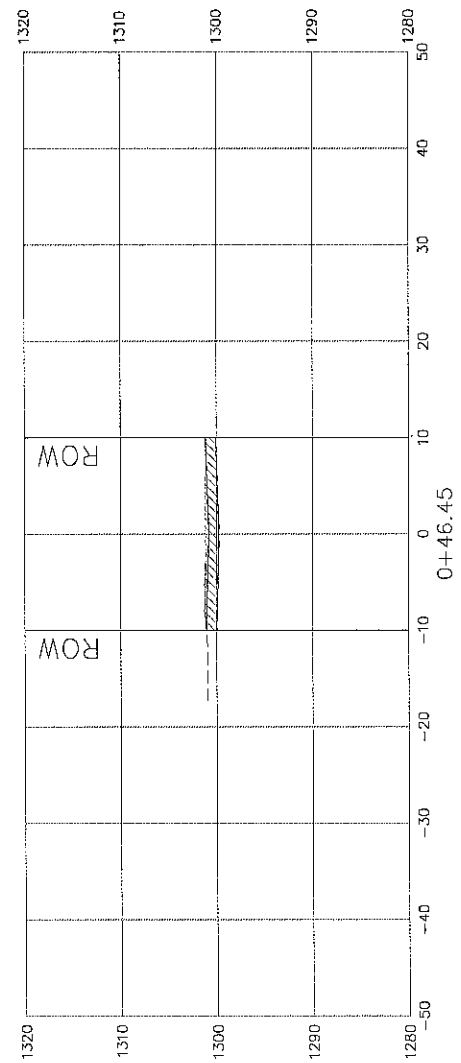
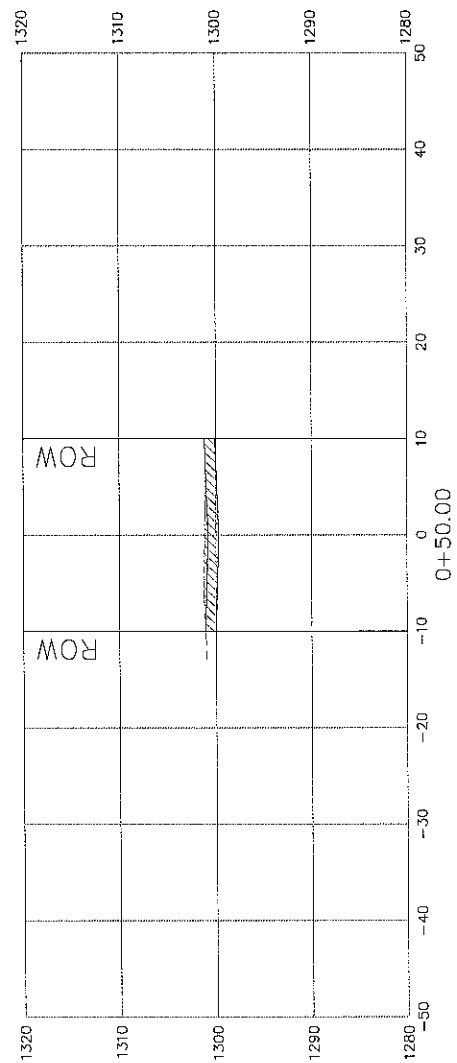
CERTIFIED ENGINEERING DESIGN, P.A.
CIVIL ENGINEERING SERVICES

CEED

1935 WEST MAPLE STREET
WICHITA, KANSAS 67213
PH.(316)262-8808 FAX.(316)262-1669

PROJECT NO.: 20111959
ISSUE DATE: MAY 2011
CONTACT: H FORAKER
DRAWN BY: CC CHECKED BY: HOF

CONCRETE PAVING DETAILS



REV.	DESCRIPTION	DATE

INFUSION PHARMACY
1909 E. CENTRAL

ALLEY PAVING
IMPROVEMENTS

WICHITA, KANSAS

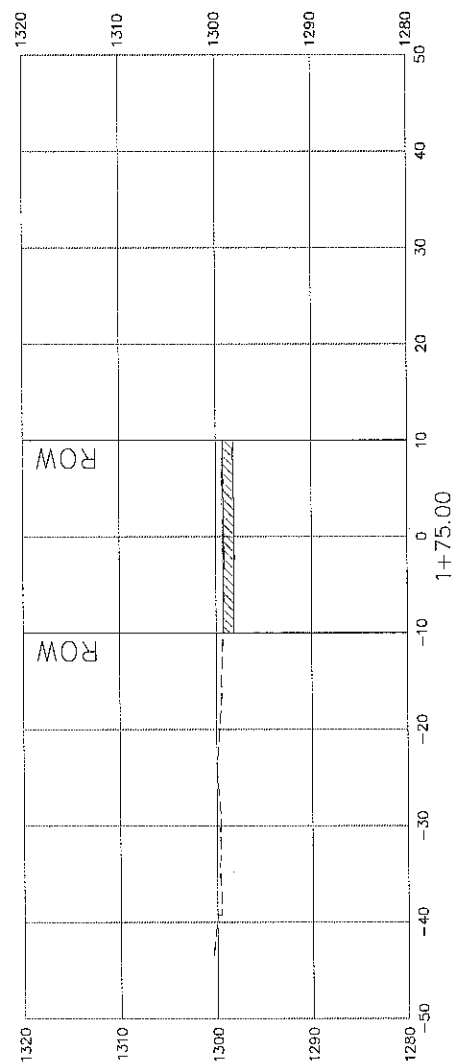
CERTIFIED ENGINEERING DESIGN, P.A.
CIVIL ENGINEERING SERVICES



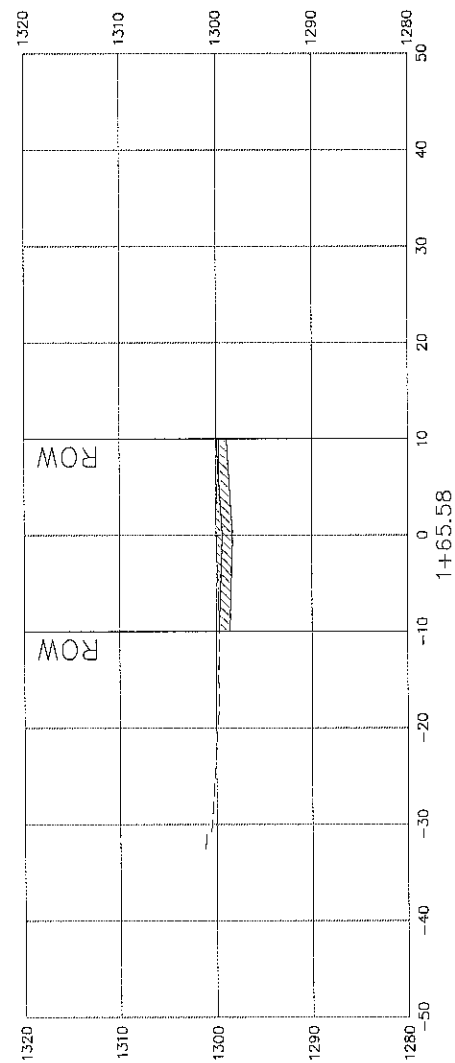
1935 WEST MAPLE STREET
WICHITA, KANSAS 67213
PH.(316)262-8808 FAX.(316)262-1669

PROJECT NO.: 20111959
ISSUE DATE: MAY 2011
CONTACT: H FORAKER
DRAWN BY: CC CHECKED BY: HDF

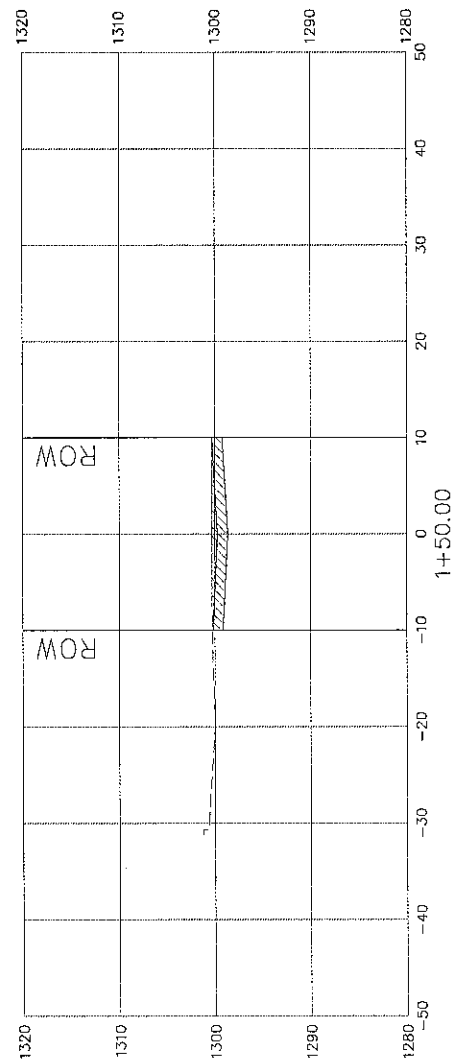
X-SECTIONS



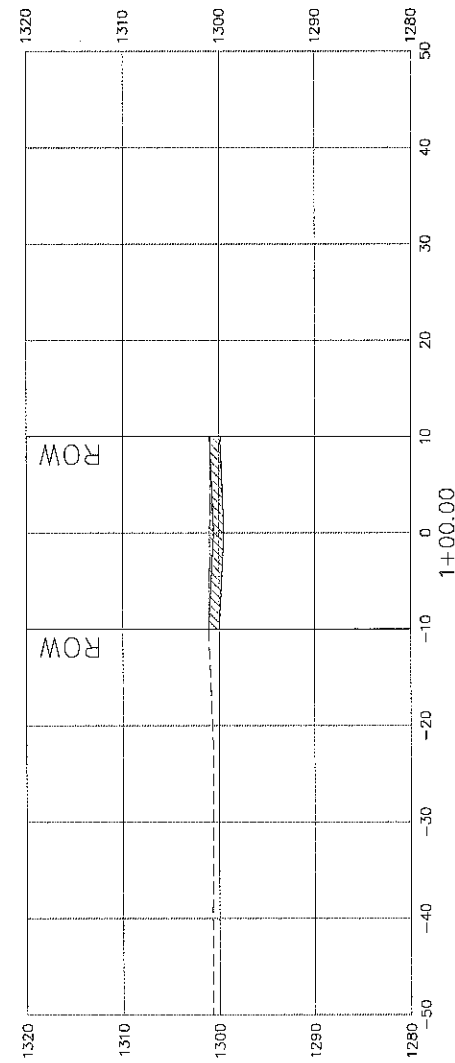
Material(s) at Station 1+75.00			
Material Name	Area	Volume	Cumulative Volume
Ground Removed	23.41	8.77	155.69
Ground Fill	0.01	0.10	0.45



Material(s) at Station 1+65.58			
Material Name	Area	Volume	Cumulative Volume
Ground Removed	26.83	15.75	146.92
Ground Fill	0.59	0.17	0.35



Material(s) at Station 1+50.00			
Material Name	Area	Volume	Cumulative Volume
Ground Removed	27.77	49.19	131.17
Ground Fill	0.00	0.02	0.18



Material(s) at Station 1+00.00			
Material Name	Area	Volume	Cumulative Volume
Ground Removed	25.36	47.29	81.98
Ground Fill	0.03	0.06	0.16

REV.	DESCRIPTION	DATE

INFUSION PHARMACY
1909 E. CENTRAL

ALLEY PAVING
IMPROVEMENTS

WICHITA, KANSAS

CERTIFIED ENGINEERING DESIGN, P.A.
CIVIL ENGINEERING SERVICES



1935 WEST MAPLE STREET
WICHITA, KANSAS 67213
PH.(316)262-8808 FAX.(316)262-1669

PROJECT NO.: 20111959
ISSUE DATE: MAY 2011
CONTACT: H FORAKER
DRAWN BY: CC CHECKED BY: HDF

X-SECTIONS