

PUBLIC WATER MAIN IMPROVEMENTS DOUGLAS BLOCK PARKING STRUCTURE

Lots 2, 4, 6, 8, 10 and 12 on Topeka Ave, N.A. ENGLISH'S ADDITION

PROJECT NUMBER 448-90544 O.C.A. 792578

GENERAL NOTES

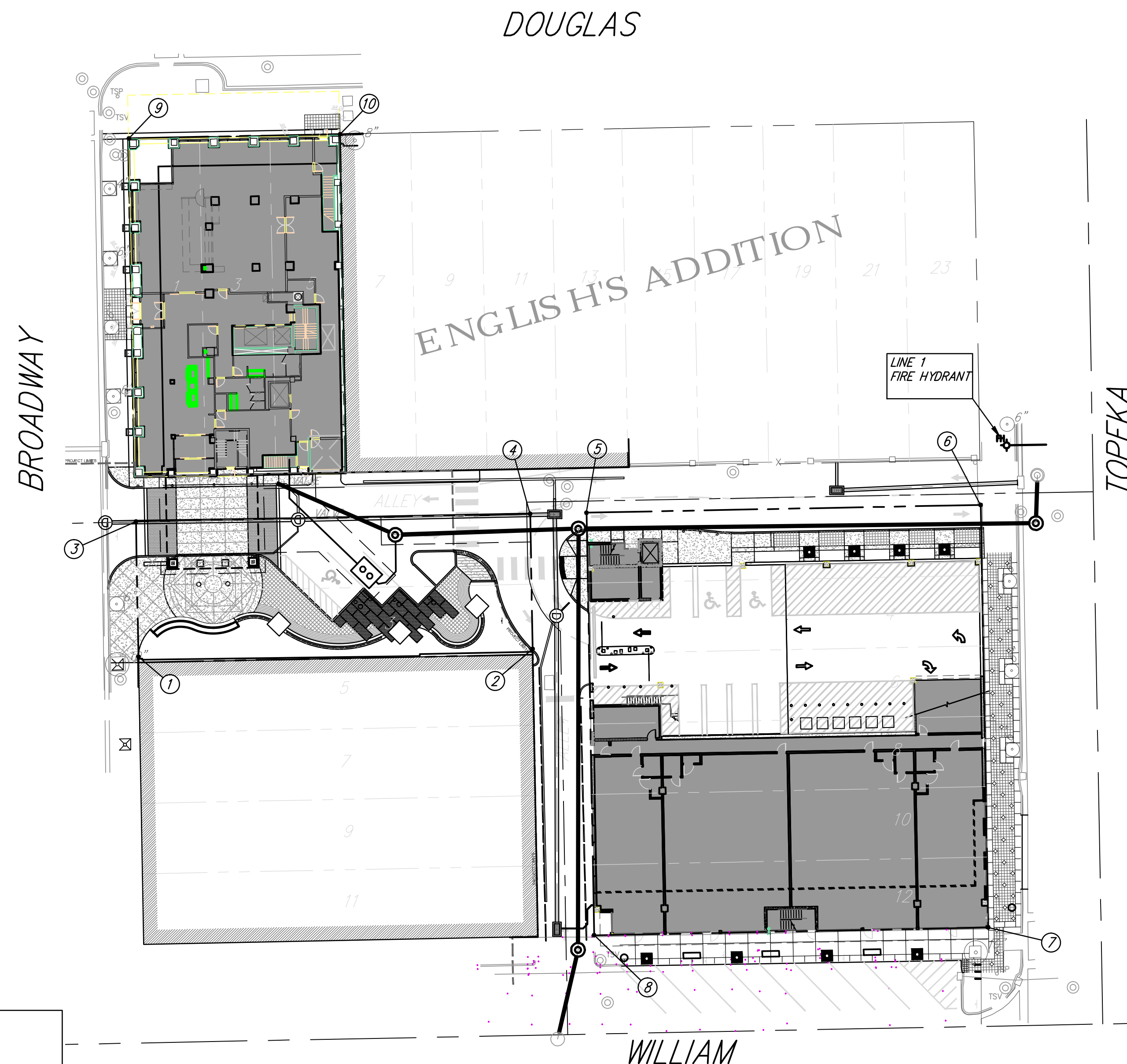
- Contractor will be required to provide a minimum notice of 72 hours to utility companies prior to starting any excavation as follows:

Kansas One-Call	687-2470
-----------------	----------

The Contractor must notify the following in case of an emergency:

Cox Communications	262-0661
Kansas Gas Service	383-8600
Westar Energy	383-8600
AT&T	1-800-286-8313
City of Wichita Water Utility	268-6000
Black Hills Energy	1-800-303-0357
- Existing utilities and their location, as shown on the plans, represent the best information obtainable for design. Location information has been obtained from the various utility companies and is either from company record drawings or company-provided field locations. The Contractor will be required to work around existing utilities within the right-of-way which do not conflict with proposed construction.
- A saw cut of the full depth of existing surface courses or pavement thickness shall be provided at locations where proposed construction abuts an existing surface course or pavement for which partial removal of that surface or pavement is required, except when such saw cuts are within three (3) feet of an existing joint the limits of removal shall be extended to the existing joint.
- This project is limits of a larger project which will include building construction. A Storm Water Pollution Prevention Plan is on file with the Kansas Department of Health and Environment.
- This project is to be constructed in accordance with City of Wichita Standard Specifications for the Construction of City Projects and Policy on Construction of Infrastructure by Private Contract.
- No work shall begin on this project before required bonds are submitted to the City of Wichita, and the project inspector has been notified.
- All areas of public R/W disturbed by construction of this project are to be restored in accordance with Administrative Regulation AR 6.5 of the City of Wichita.
- One-lane traffic on Second St. in each direction shall be maintained at all times. Traffic control shall be positioned to the latest MUTCD standard specifications.

COORDINATE CONTROL TABLE				
CONTROL NO.	LOCATION	DESCRIPTION	NORTHING	EASTING
1	SW CORNER OF LOT 3, N.A. ENGLISH'S ADDITION	(SET CORNER)	1685555.62	1649506.28
2	SE CORNER OF LOT 3, N.A. ENGLISH'S ADDITION	(SET CORNER)	1685558.38	1649646.16
3	NW CORNER OF LOT 1, N.A. ENGLISH'S ADDITION	(SET CORNER)	1685603.61	1649505.41
4	NE CORNER OF LOT 1, N.A. ENGLISH'S ADDITION	(SET CORNER)	1685606.35	1649645.29
5	NW CORNER OF LOT 2, N.A. ENGLISH'S ADDITION	(SET CORNER)	1685606.75	1649665.29
6	NE CORNER OF LOT 2, N.A. ENGLISH'S ADDITION	(SET CORNER)	1685609.49	1649805.17
7	SE CORNER OF LOT 12, N.A. ENGLISH'S ADDITION	(SET CORNER)	1685459.58	1649807.86
8	SW CORNER OF LOT 12, N.A. ENGLISH'S ADDITION	(SET CORNER)	1685456.81	1649668.00
9	NW CORNER OF LOT 1, N.A. ENGLISH'S ADDITION	(SET CORNER)	1685739.56	1649502.93
10	NE CORNER OF LOT 5, N.A. ENGLISH'S ADDITION	(SET CORNER)	1685741.03	1649577.88



INDEX OF SHEETS

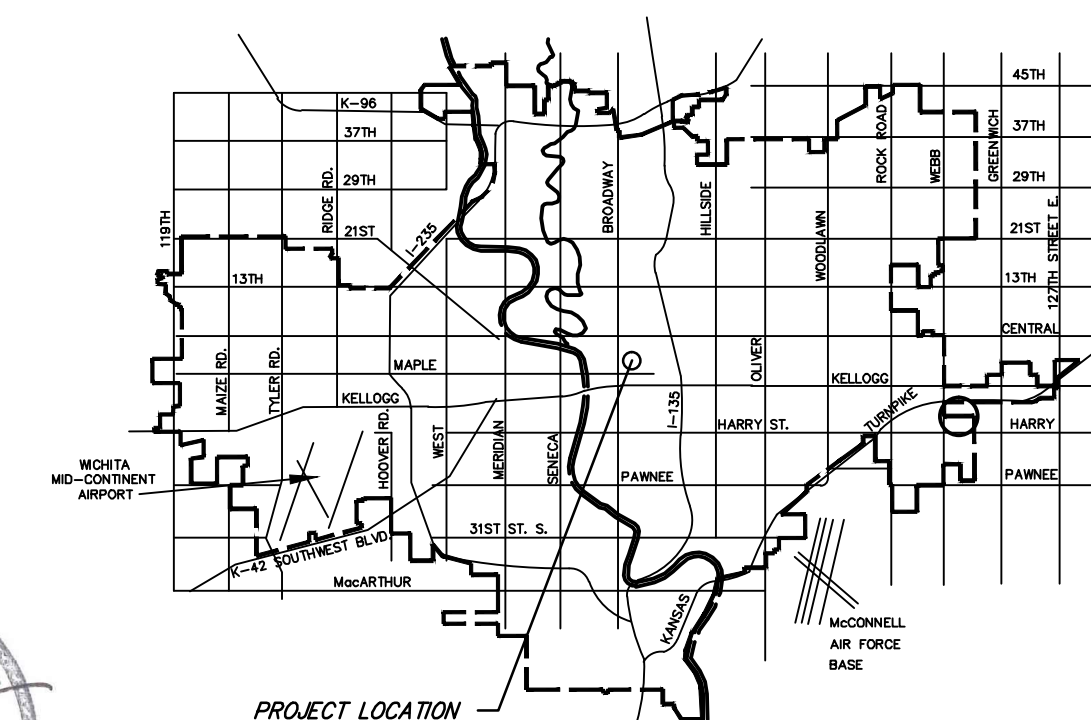
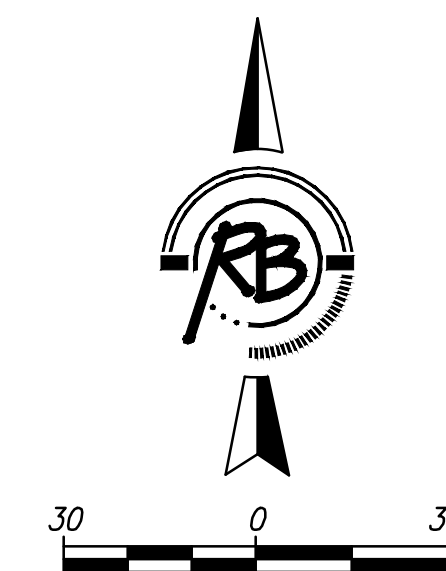
(CITY SUBMITTAL INDEX)

- TITLE SHEET
- WATER PLAN & PROFILE
- DETAILS

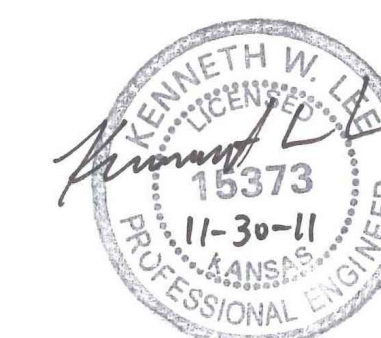
BENCHMARKS

BENCHMARK #1: CHISELED SQUARE ON THE TOP OF CURB ON THE SOUTH SIDE OF ALLEY ON WEST SIDE OF TOPEKA, 1/2 BLOCK BETWEEN DOUGLAS AND WILLIAM
ELEVATION = 1297.01 (NAVD88)

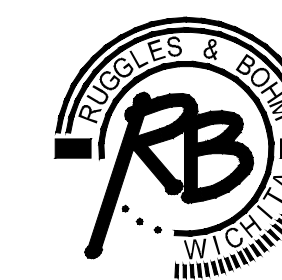
BENCHMARK #2: CHISELED SQUARE ON TOP OF CURB ON THE WEST CURB RETURN AT THE SOUTHWEST CORNER OF TOPEKA AND WILLIAM
ELEVATION = 1296.32 (NAVD88)



VICINITY MAP



CITY OF WICHITA, KANSAS
JAMES L. ARMOUR, P.E., CITY ENGINEER



Ruggles & Bohm, P.A.
E engineering, S urveying, L and P lanning
924 North Main (316) 264-8008
Wichita, Kansas 67203 (316) 264-4621 fax
www.rbkansas.com E-mail: info@rbkansas.com

C4.0



WDM Architects P.A.
105 North Washington
Wichita, KS 67202-2815
T 316.262.4700
F 316.262.0002
wdmarchitects.com

we do more

DOUGLAS BLOCK PARKING STRUCTURE

Wichita, Kansas

PRINTS ISSUED
09.02.11 - PRICING SET
10.28.11 - FOR BID

WDM No. drawn: BDT
checked: KWL/BC
WTR COVER