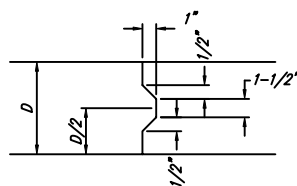
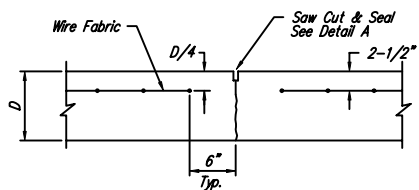


EXPANSION JOINT

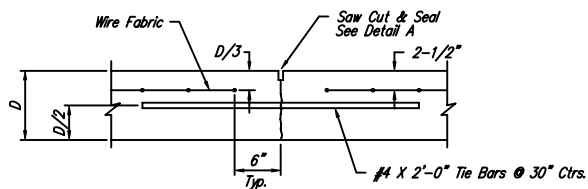
NOTE: Extra Thickness to be Subsidiary to Price of Square Yards Pavement



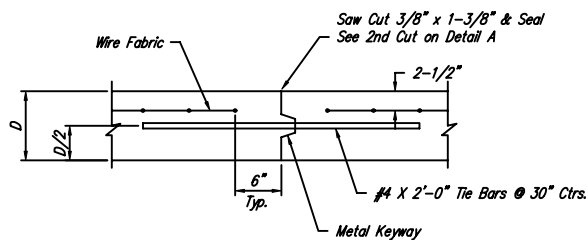
KEYWAY DETAIL



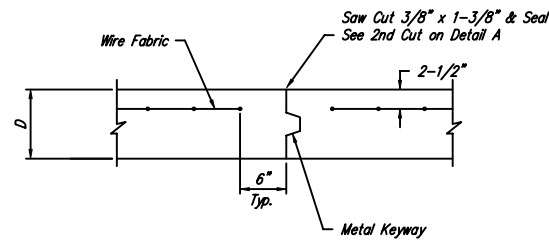
CONTRACTION JOINT DETAIL (C.J.)



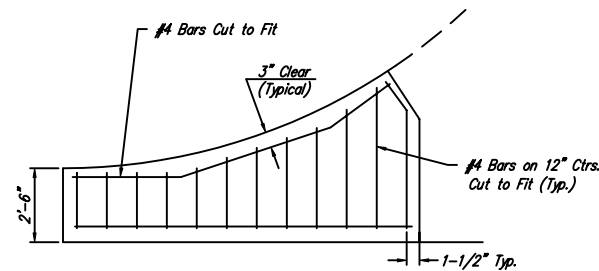
LONGITUDINAL JOINT DETAIL (L.J.)



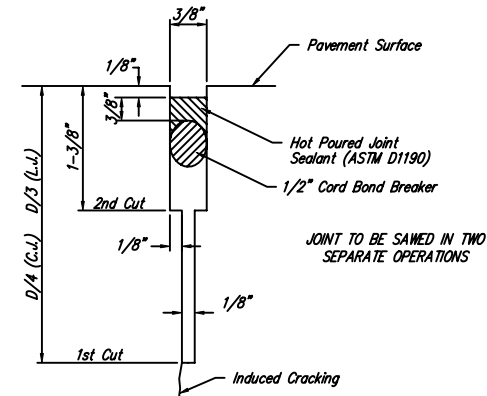
OPTIONAL LONGITUDINAL JOINT DETAIL (L.J.)



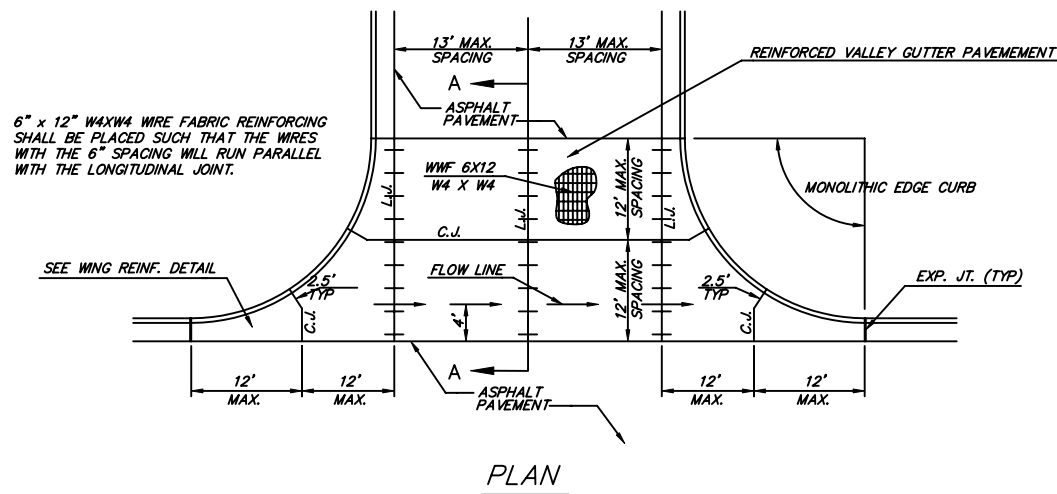
OPTIONAL CONTRACTION JOINT



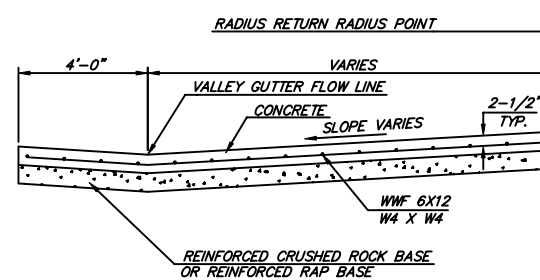
WING REINFORCING DETAIL



SAW JOINT DETAIL



PLAN



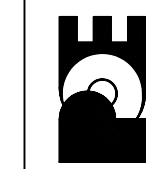
SECTION A-A

REINFORCED VALLEY GUTTER DETAIL

| No. | Date | By | Approved | Revision |
|-----|------|----|----------|----------|
| 1 | | | | |
| 2 | | | | |
| 3 | | | | |
| 4 | | | | |

FOUR H ADDITION
STREET IMPROVEMENTS
VALLEY GUTTER DETAILS
CITY OF WICHITA, KANSAS
JAMES ARMOUR, P.E. - CITY ENGINEER
C.O.W. Project # 472-82312 O.C.A. # 765923

POE & ASSOCIATES, INC.
CONSULTING ENGINEERS
5940 E. Central, Suite 200B Wichita, KS 67208-4242
Phone 316/685-4114 FAX 316/685-4444



FINAL
Designed By: T. Austin
Drawn By: S. Schmidt
Poe Job No.: AM 04106-02
Date: January 2005