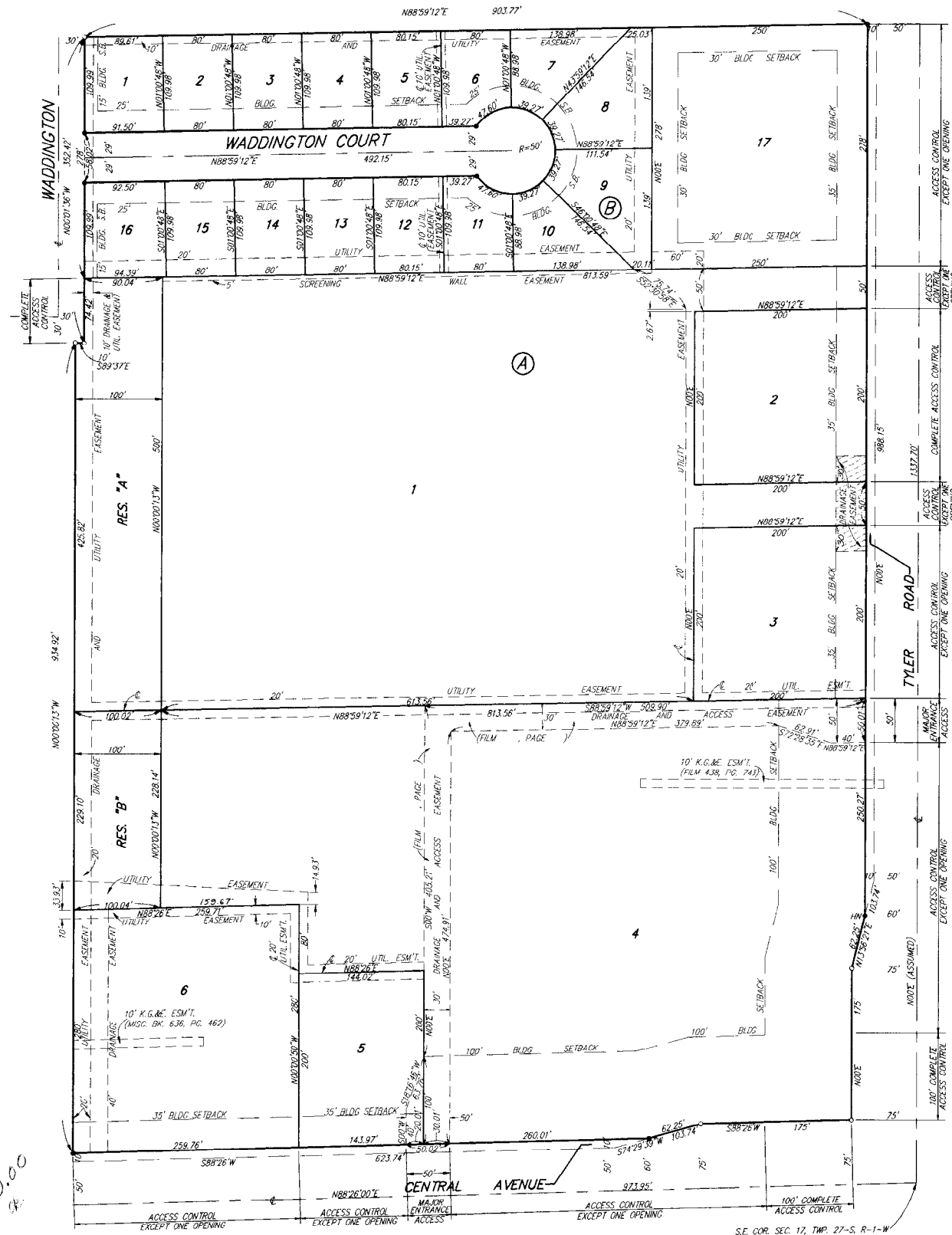


FOUR H ADDITION

WICHITA, SEDGWICK COUNTY, KANSAS



SCALE: 1" = 80'
 • = 1/2" IRON (FOUND)
 • = 1/2" REBAR
 W/ "BAUGHMAN" CAP (SET)
 H* = "HILTI" NAIL (SET)

NOTE:
 BUILDING SETBACK LINES WITHIN
 BLOCK "A" AS PER FOUR H
 COMMUNITY UNIT PLAN, DP-209.

State of Kansas) SS We, Baughman Company, P.A., Surveyors in
 Sedgwick County) aforesaid county and state do hereby certify that we have surveyed
 and platted "FOUR H ADDITION", Wichita, Sedgwick County, Kansas
 and that the accompanying plat is a true and correct exhibit of the
 property surveyed, described as and being a replat of the following:
 All of Lot 1, 4-H Club Addition, Wichita, Sedgwick County, Kansas and
 all of Lot 1, 4-H Club 2nd Addition, Wichita, Sedgwick County, Kansas.

All being situated in the SE1/4 of Sec. 17, Twp. 27-S, R-1-W of
 the 6th P.M., Sedgwick County, Kansas.
 Existing public easements and dedications being vacated by
 virtue of KSA 12-512(b).

Baughman Company, P.A.

Date 3/3/93



Gregory F. Severns
 Gregory F. Severns Surveyor

Know all men by these presents that we,
 the undersigned, have caused the land described in the surveyors
 certificate to be platted into lots, blocks, streets and reserves to be
 known as "FOUR H ADDITION", Wichita, Sedgwick County, Kansas.
 Reserve "A" and Reserve "B" are hereby reserved for landscaping,
 open space, screen wall construction, and drainage purposes.
 Reserve "A" shall be owned and maintained by the owner of Lot 1.
 Reserve "B" shall be owned and maintained by the owner of Lot 4.
 The streets are hereby dedicated to and for the use of the public. The
 utility easements are hereby granted as indicated for the construction and
 maintenance of all public utilities. The drainage easements are hereby
 granted as indicated for drainage purposes. The drainage and utility ease-
 ments are hereby granted as indicated for drainage purposes and for the
 construction and maintenance of all public utilities. The access and
 drainage easements are hereby granted for access purposes and for
 drainage purposes. The screening wall easement is hereby granted
 as indicated for screening purposes. Access controls as depicted
 on the face of the plat are hereby granted to the City of Wichita,
 Kansas. The permitted entrance locations shall be as determined
 by the City Engineer of the City of Wichita, Kansas. Building Setback
 Lines within Block "A" as per Four H Community Unit Plan, DP-209.

T V Realty, L. L. C.

Stephen J. Mardis
 Stephen J. Mardis Manager

State of Kansas) SS The foregoing instrument acknowledged be-
 fore me, this 2nd day of March, 1993, by Stephen J. Mardis,
 Manager of T V Realty, L. L. C., on behalf of the Company.

Richard E. Strong Notary Public
 My App't. Exp. 2-3-95

We, the undersigned, holders of a mortgage
 on the above described property do hereby consent to this plat of
 "FOUR H ADDITION", an Addition to Wichita, Sedgwick County, Kansas.

Bank IV
Tim McGuigan, Vice President
 Tim McGuigan

State of Kansas) SS The foregoing instrument acknowledged be-
 fore me this 9th day of March, 1993, by Tim McGuigan,
 Vice President of Bank IV, on behalf of the bank.

Barbara S. Brewer Notary Public
 My App't. Exp. 1/1/96

This plat of "FOUR H ADDITION", Wichita,
 Sedgwick County, Kansas, has been submitted to and approved by
 the Wichita-Sedgwick County Metropolitan Area Planning Commission,
 Wichita, Kansas.

Dated this 2nd day of February, 1993.
 Wichita-Sedgwick County Metropolitan Area Planning Commission.

L. O. Breckenridge, Jr.
 Chairman
 L. O. Breckenridge, Jr.

Marvin S. Krout
 Secretary
 Marvin S. Krout

This plat approved and all dedications
 shown hereon accepted by the City Council of the City of Wichita,
 Kansas, this 23rd day of March, 1993.



Frank M. Dille
 Mayor
 Frank M. Dille

Pat Burnett
 Deputy City Clerk
 Pat Burnett

Entered on transfer record this 1st day
 of April, 1993.



Susan E. Crockett-Spoon
 County Clerk
 Susan E. Crockett-Spoon

#1279652

State of Kansas) SS This is to certify that this plat has been
 Sedgwick County) filed for record in the office of the Register of Deeds, this 1st day
 of APRIL, 1993, at 11:00'clock A.M. and is duly
 recorded.

Pat Kettler
 Register of Deeds
 Pat Kettler

Ed Resa
 Deputy
 Ed Resa