

P.V.I.  
Elev. = 84.90  
40' V.C.

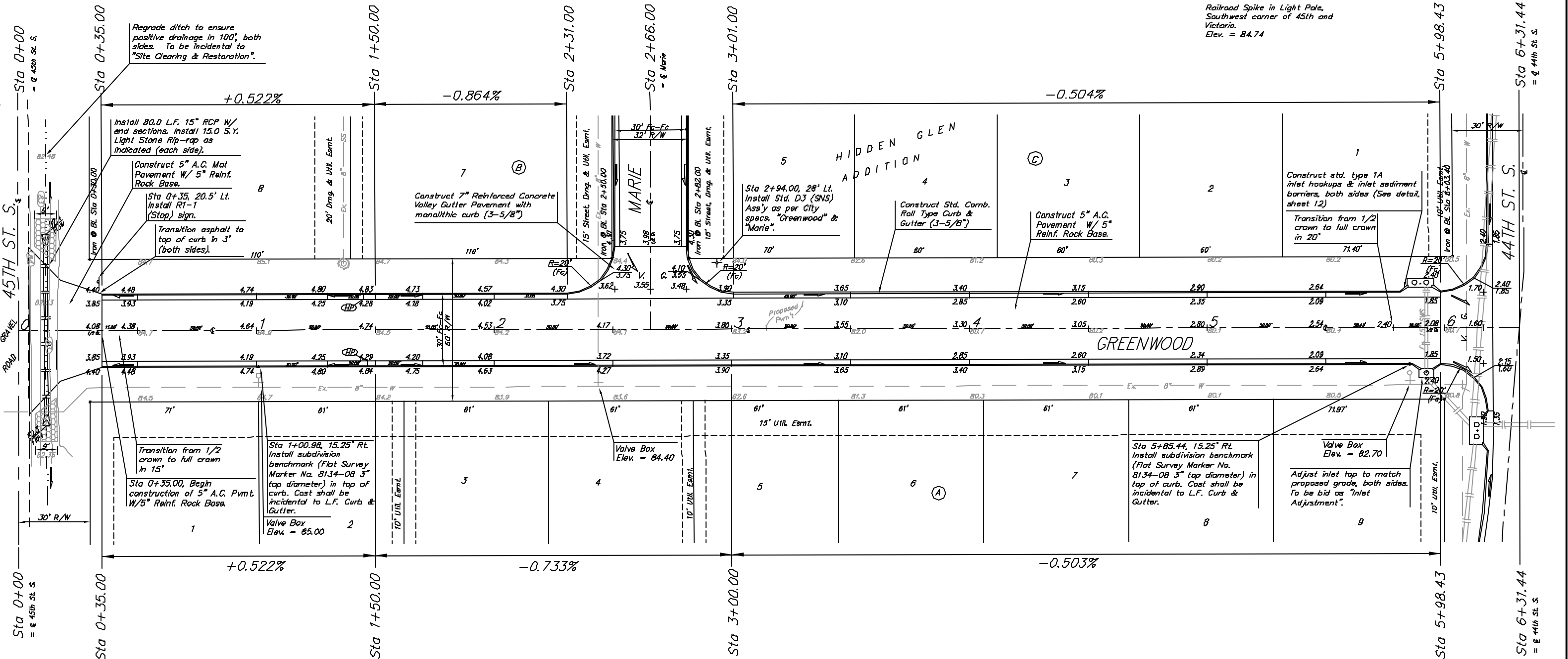
BENCHMARK:  
"□" Top of curb, north  
return, Northwest corner of  
43rd and Hydraulic.  
Elev. = 82.33



Small Railroad Spike in West  
face of Flower Pole, East of  
44th and Hydraulic.  
Elev. = 82.84

Scale: 1" = 20'  
\* = Iron

Railroad Spike in Light Pole,  
Southwest corner of 45th and  
Victoria.  
Elev. = 84.74



P.V.I.  
Elev. = 84.90  
40' V.C.

P.V.I.  
Elev. = 83.90  
No V.C.

Contact Mike Tallman with the City of Wichita Engineering Department and request street numbers prior to installation of Street Name Signs.

NOTE: ROLL TYPE CURB & GUTTER TO BE CONSTRUCTED ON THE PAVEMENT SHOWN ON THIS SHEET. TOP OF CURB ELEVATIONS ARE GIVEN FOR FULL HEIGHT CURB.

		HIDDEN GLEN ADDITION <b>Greenwood</b> Street Paving	
Baughman Company, Inc. 513 South Union, Suite 1000, Wichita, Kansas 67202 316-261-1111   WWW.BAUGHMAN.COM   P. 123456789   913-261-1111			
PROJECT NUMBER 472-83625	DRAWN BY MMS	CHECKED BY JIS	DATE 07/04
REVISIONS	NOTED MUST	7 of 19	