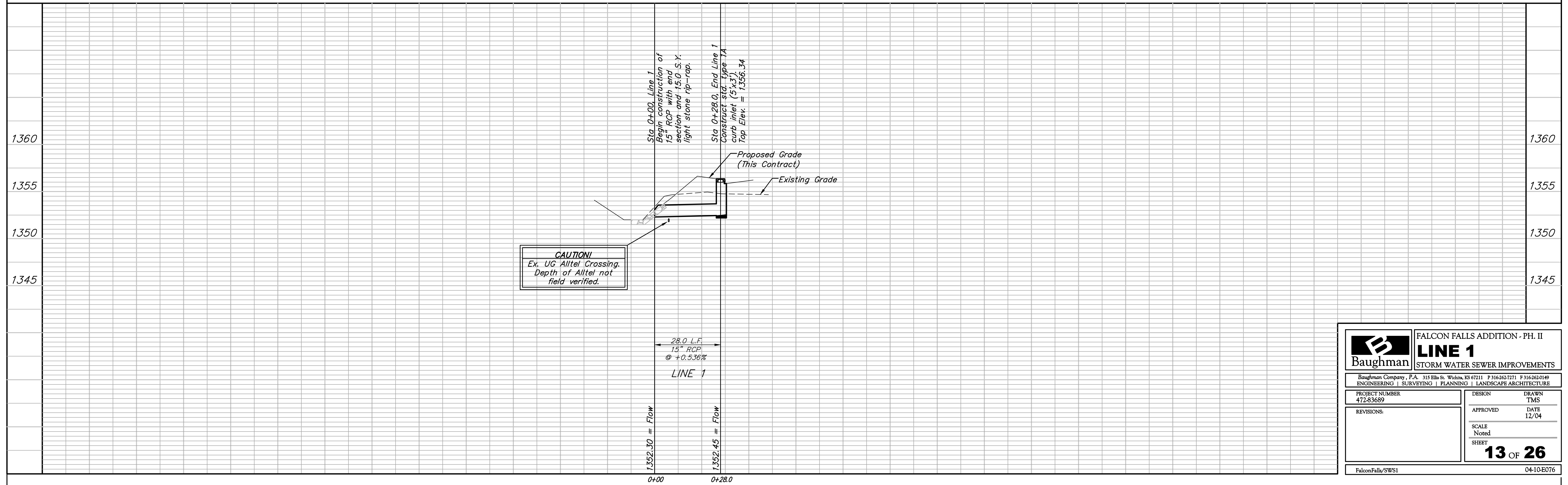
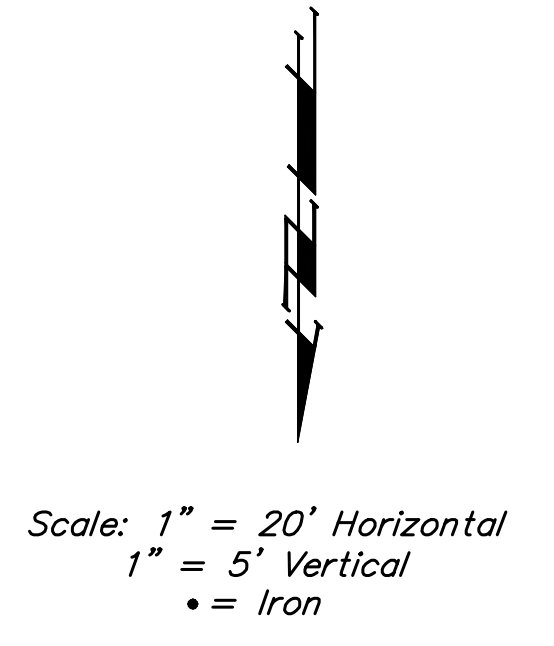
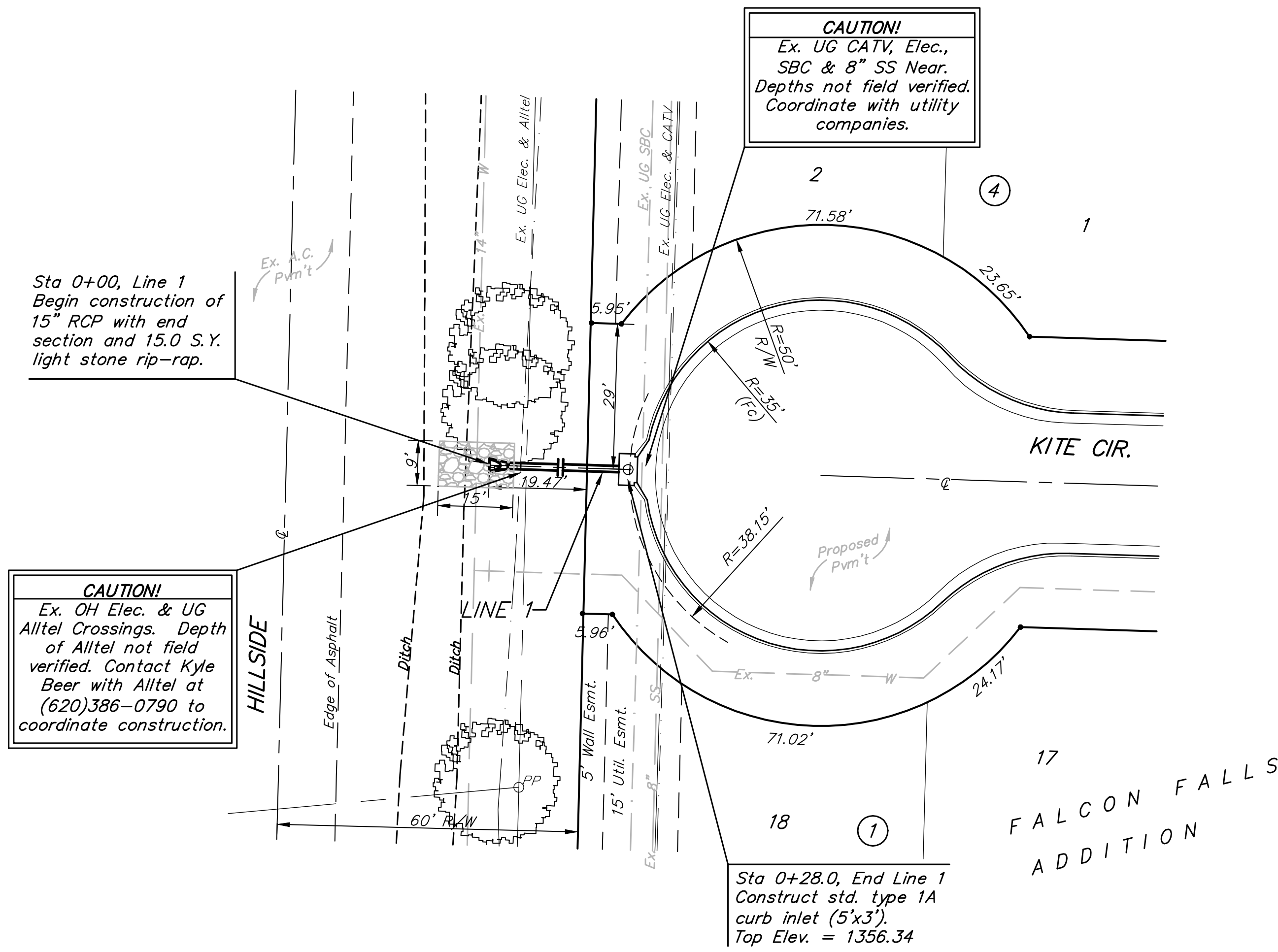


BENCHMARKS:

BM #1: "□" CL face of catch basin, west side of Lot 4, Block 5. Elev. = 1352.47 MSL

BM #2: "□" south end of the south curb return at Kite and Peregrine. Elev. = 1359.85 MSL



		FALCON FALLS ADDITION - PH. II LINE 1 STORM WATER SEWER IMPROVEMENTS	
<small>Baughman Company, P.A. 315 Ellis St. Wichita, KS 67211 P 316-262-7271 F 316-262-0149 ENGINEERING SURVEYING PLANNING LANDSCAPE ARCHITECTURE</small>			
PROJECT NUMBER 472-83689	DESIGN TMS	DRAWN TMS	DATE 12/04
REVISIONS:	APPROVED	SCALE Noted	SHEET 13 OF 26
<small>FalconFalls/SWS1</small>		<small>04-10-E076</small>	