

BENCHMARKS:
 RR Spike in N. Face of PP in
 N. R/W of Maple N. of Nineiron.
 Elev. = 177.01 (City Datum)

"□" Cut center of north
 Headwall of RCBC in N. R/W of
 Maple 570' East of centerline
 of City View.
 Elev. = 188.09 (City Datum)

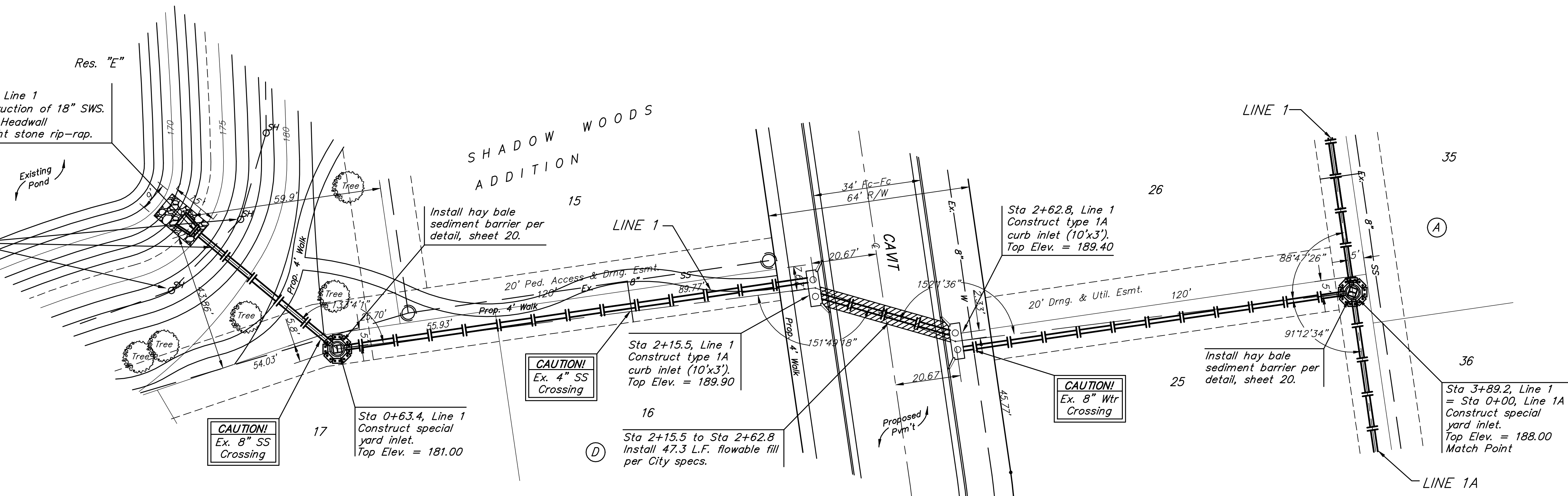
Sta 0+05.0, Line 1
 Begin construction of 18" SWS.
 1 - 18" RC Headwall
 15.0 S.Y. light stone rip-rap.

Static Pool = 174.0
 Bottom = 167.0

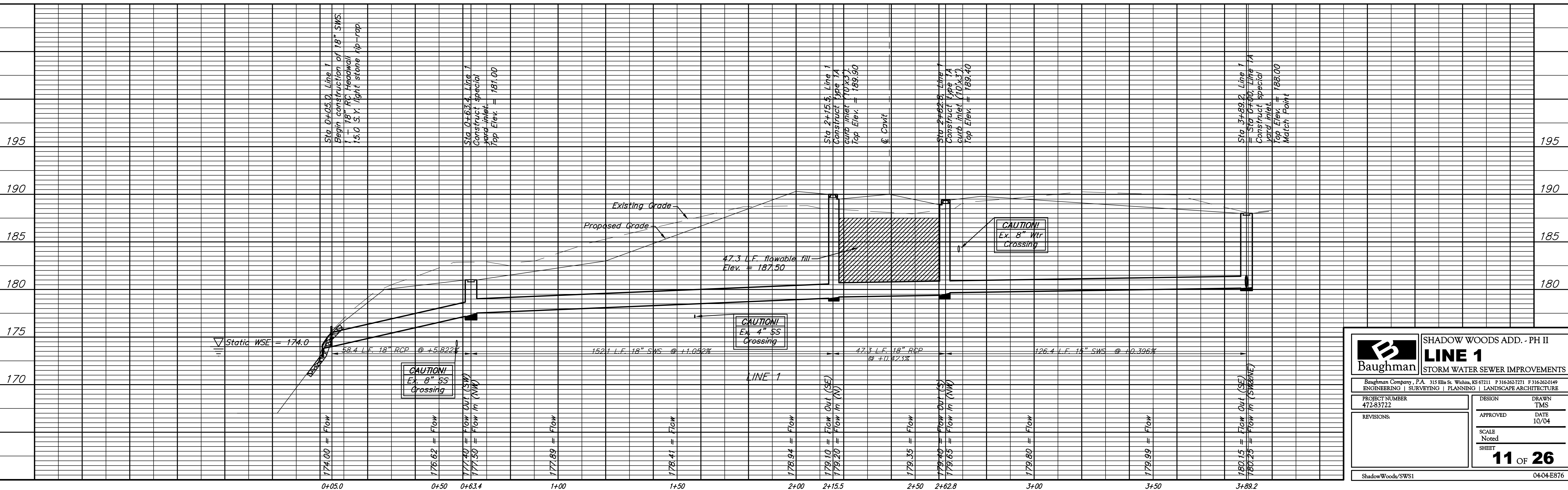
CAUTION! Sprinkler Line
 Crossing. Sprinkler head
 locations (typical). Not all
 sprinkler heads shown.
 Contractor to contact Randy
 Johnson, 519-6031 one week
 prior to construction to
 coordinate sprinkler conflict.

Contractor shall not remove or
 damage any trees for sidewalk
 construction. Any tree damage
 shall require replacement by
 Contractor at no additional cost
 to the project.

All sprinkler lines shall be
 protected from damage during
 construction. Contractor shall
 repair or replace all damaged
 sprinkler lines & heads at no
 additional cost to the project.



Scale: 1" = 20' Horizontal
 1" = 5' Vertical
 • = Iron



Baughman		SHADOW WOODS ADD. - PH II	
		LINE 1	
		STORM WATER SEWER IMPROVEMENTS	
Baughman Company, P.A. 315 Ellis St. Wichita, KS 67211 P 316-262-7271 F 316-262-0149			
ENGINEERING SURVEYING PLANNING LANDSCAPE ARCHITECTURE			
PROJECT NUMBER 472-83722	DESIGN TMS	DRAWN TMS	DATE 10/04
REVISIONS:	APPROVED	SCALE Noted	SHEET 11 OF 26
ShadowWoods/SWS1		04-04-E876	