

# STORM WATER DRAIN 382 DRAINAGE IMPROVEMENTS FOR GREENBRIAR MANOR ADD. FROM EAST GREENBRIAR LANE TO EAST FORK CHISHOLM CREEK

PROJECT NO. 468-84793  
O.C.A. NO. 133117

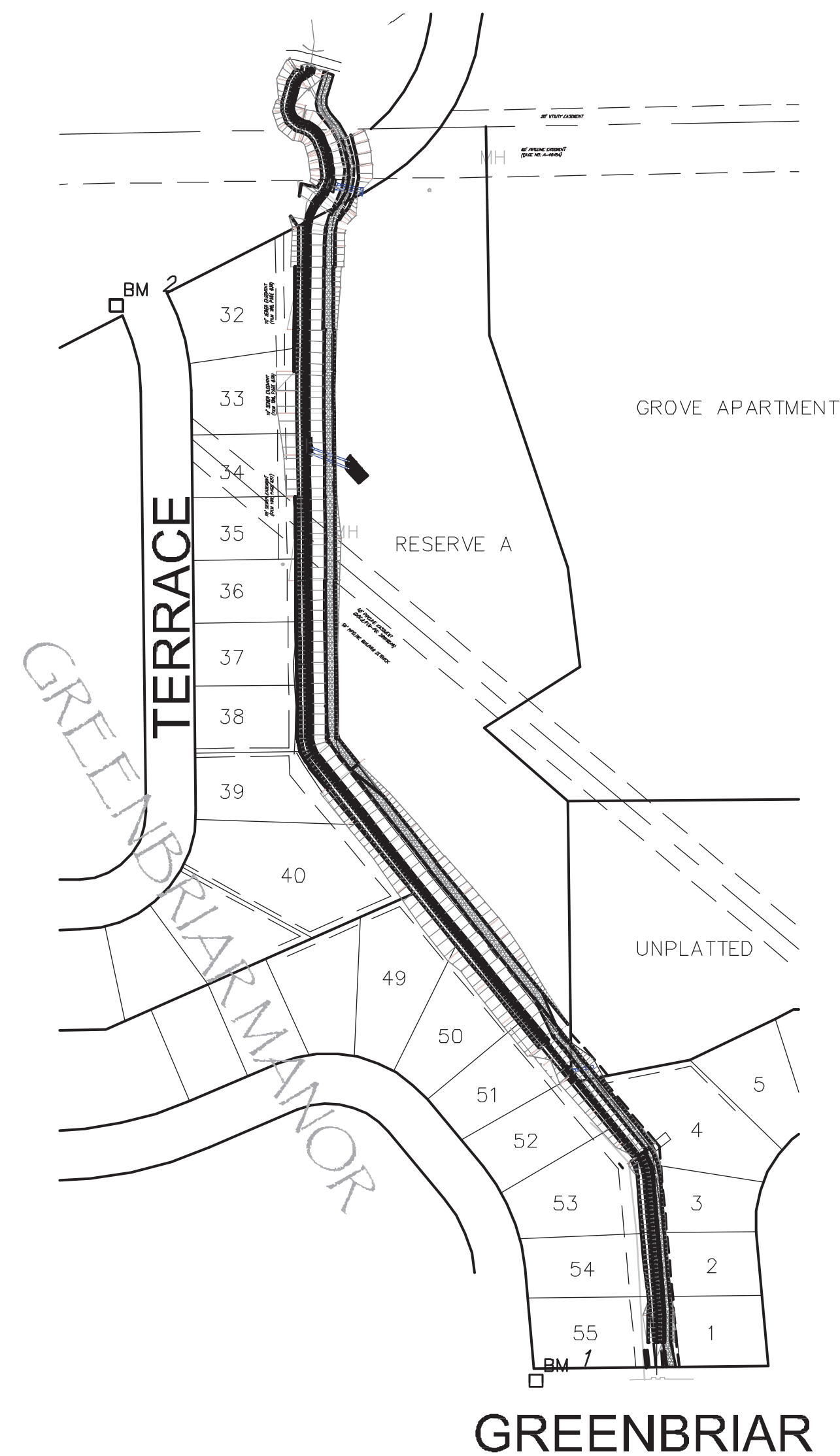
## GENERAL NOTES

- Contractor will be required to provide a minimum advance notice of seventy-two (72) hours to utility companies prior to starting any excavation as follows:  

Kansas One-Call	687-2470
-----------------	----------

The Contractor must notify the following in case of an emergency:

Cox Communications	260-7204
Kansas Gas Service	888-482-4950
Westar	383-8600
AT&T	1-800-286-8313
City of Wichita Water Department	262-6000
City of Wichita Sewer Maintenance	262-6000
Conoco Phillips - Scott Salisbury	316-681-2081 ext. 12
NuStar Energy	316-321-3500
- Underground utility service lines and overhead utility pole lines are to be adjusted as necessary by others prior to construction unless the plans specifically call for their adjustment by the Contractor or unless the plans specifically identify a utility to be adjusted by its owner during construction. Existing utilities and their location, as shown on the plans, represent the best information obtainable for design. Location information has been obtained from the various utility companies and is either from company record drawings or company-provided field locations. The Contractor will be required to work around existing utilities within the right-of-way which do not conflict with proposed construction.
- Rubble from the removal of miscellaneous structures and excess excavation which is to be wasted shall be disposed of on sites to be provided by the Contractor. These sites shall be approved by the Engineer as to suitability, appearance and site location. Locations that, in the opinion of the Engineer, will leave an unsightly appearance will not be approved.
- All disposal sites must be approved by the Kansas Department of Health and Environment. Material either stockpiled or disposed of in a flood plain would require a Kansas State Board of Agriculture permit. Any material dumped in waters of the United States or wetlands is subject to U.S. Corps permitting regulations. Any material buried or stockpiled beyond approved of Engineers construction limits would require additional archeological investigations unless buried in a previously approved borrow location.
- The Contractor shall have a Licensed Surveyor reset property monuments in the required locations where such property corners fall within the limits of construction. This work will be subsidiary to the bid item for Site Restoration.
- The Contractor shall give all property owners and/or tenants of developed property directly abutting the construction of this project a minimum of ten (10) days advance notice prior to start of construction.
- Any trash, rubble or other debris encountered within the clearing limits at any time during the construction of this project shall be removed from the site. This work shall be incidental to the bid item for site clearing and restoration.
- The contractor shall remove and reset fences as necessary for construction. Remove and replace with like material when existing fence is not salvageable. Cost is subsidiary to Site Clearing unless otherwise noted.
- The entire length of the channel has multiple trees of various sizes growing in it. Unless specified in the plans, the channel is to be cleared of all trees within the grading limits, cost subsidiary to bid item for Site Clearing. If large trees are in a location where the access road alignment may be adjusted, the trees may remain if approved by the Engineer. Trees within 5' of the grading limits shall be removed only after approval of the field Engineer. It is suggested the Contractor visit the site prior to bidding.
- All end sections on downstream end of pipes to be restrained, costs subsidiary to the pipe bid item.
- A point file is available for the City of Wichita survey crew. Ruggles and Bohm will provide an upload of a staking file to City crews upon request.
- Contractor shall coordinate with homeowners when removing/replacing fences. Contractor shall provide temporary fencing as necessary.



## BENCH MARKS

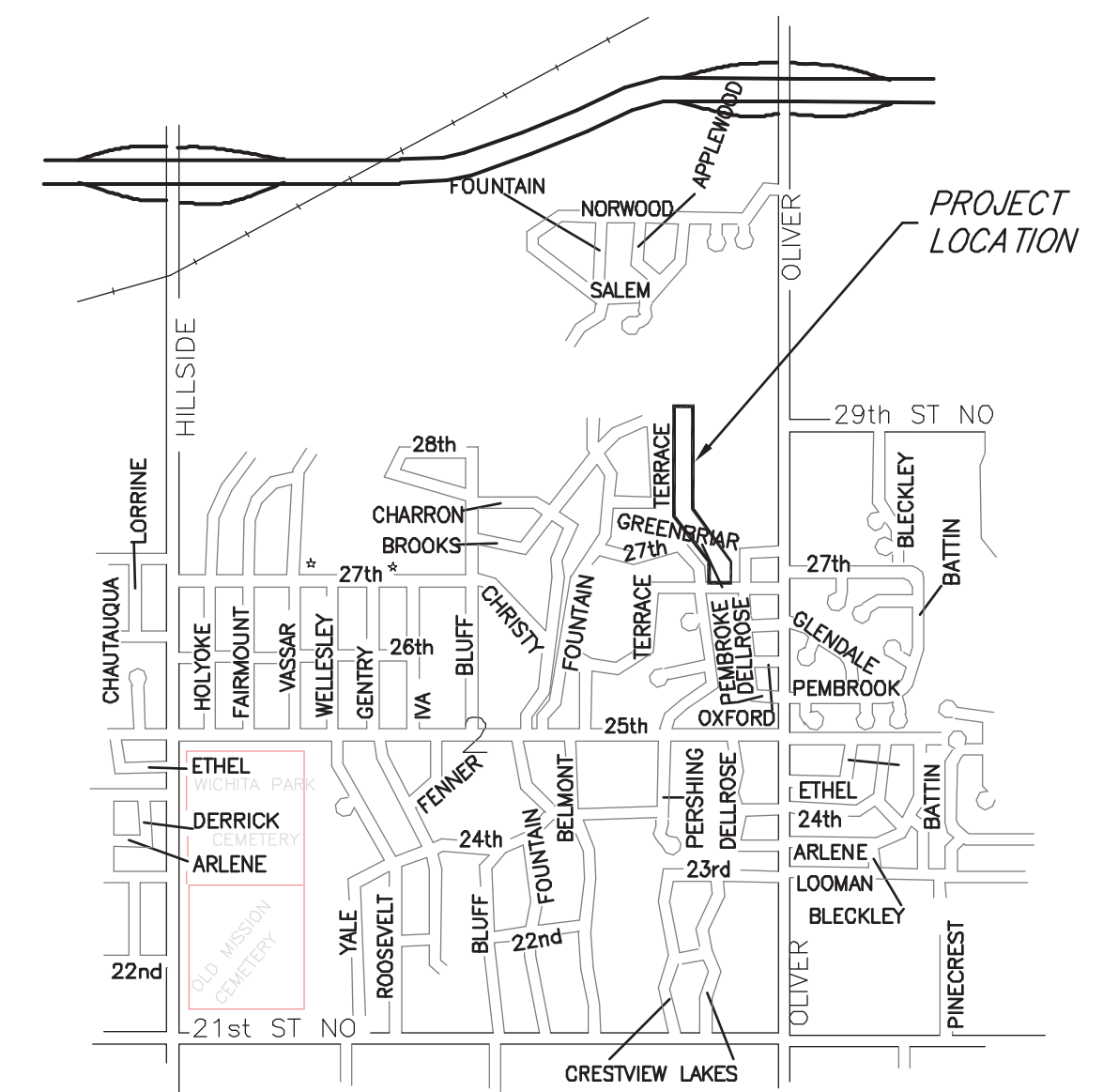
BENCH MARK #1: SQ. Cut on T.C., East return at N.E. corner of Greenbriar and Pershing  
Elev. 1352.28 NAVD88

BENCH MARK #2: SQ. Cut on T.C., West return at Terrace and Brooks  
Elev. 1345.18 NAVD88

All Elevations are in NAVD88

## INDEX OF SHEETS

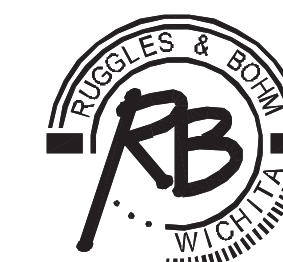
- TITLE SHEET
3. TYPICAL SECTIONS
- 4-7. STORM DRAIN PLAN/PROFILES
8. REDI-ROCK WALL PROFILES
9. BOX REPAIR DETAILS
- 10-11. LANDSCAPE PLANS
- 12-13. LANDSCAPE DETAILS
14. EROSION CONTROL PLAN
- 15-17. EROSION CONTROL BMP DETAILS
18. KEY MAP
- 19-26. CROSS SECTIONS



## VICINITY MAP



CITY OF WICHITA, KANSAS  
JAMES ARMOUR, P.E. - CITY ENGINEER



Ruggles & Bohm, P.A.  
Engineering, Surveying, Land Planning  
924 North Main  
Wichita, Kansas 67203  
www.rbkansas.com  
(316) 264-8008  
(316) 264-4621 fax  
E-mail: info@rbkansas.com