

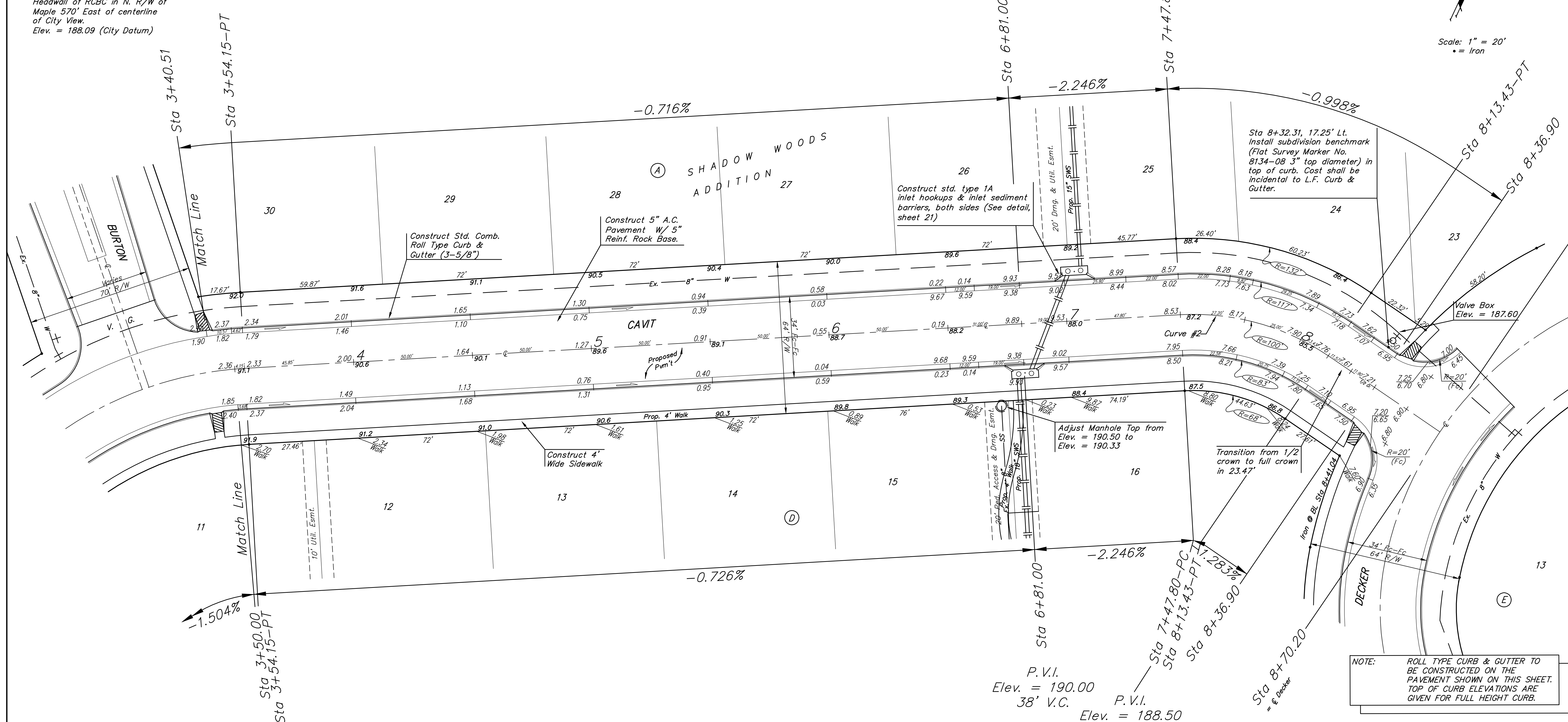
BENCHMARKS:
 RR Spike in N. Face of PP in
 N. R/W of Maple N. of Nineiron.
 Elev. = 177.01 (City Datum)

"□" Cut center of north
 Headwall of RCBC in N. R/W of
 Maple 570' East of centerline
 of City View.
 Elev. = 188.09 (City Datum)

P.V.I.
 Elev. = 190.00
 38' V.C.

P.V.I.
 Elev. = 188.50
 44' V.C.

Scale: 1" = 20'
 • = Iron



P.V.I.
 Elev. = 192.40
 No V.C.

Curve #2
 Curve Data Based on Centerline
 Rad. = 100' Delta = 37° 36' 05" Tangent = 34.04'
 Arc = 65.63' L.C. = 64.46' Def/Ft. = 17.18790 Min.

Station	Arc	FACE CHORD LENGTHS		Defl.	T. Defl.
		8' Lt.	8' Rt.		
7+47.80	-	-	-	0'00'00"	0'00'00"
7+50.00	2.20'	2.75'	1.65'	0'37'49"	0'37'49"
7+75.00	25.00'	31.17'	18.70'	7'09'42"	7'47'30"
8+00.00	25.00'	31.17'	18.70'	7'09'42"	14'57'12"
8+13.43	13.43'	16.77'	10.06'	3'50'50"	18'48'02"

NOTE: ROLL TYPE CURB & GUTTER TO BE CONSTRUCTED ON THE PAVEMENT SHOWN ON THIS SHEET. TOP OF CURB ELEVATIONS ARE GIVEN FOR FULL HEIGHT CURB.

Baughman		SHADOW WOODS ADD. - PH II	
		CAVIT	
		STA Sta 3+42.96 TO STA 8+70.20	
Baughman Company, P.A. 315 Ellis St. Wichita, KS 67211 P 316262-7771 F 316262-0149			
ENGINEERING SURVEYING PLANNING LANDSCAPE ARCHITECTURE			
PROJECT NUMBER 472-83722	DESIGN TMS	DRAWN TMS	DATE 10/04
REVISIONS:	APPROVED	SCALE Noted	SHEET 6 OF 26
Shadow Woods/Str2		04-04-E876	